

LEGEND

EXISTING WATER MAIN	
PROPOSED WATER MAIN	
EXISTING WATER VALVE	
PROPOSED WATER VALVE	
EXISTING FIRE HYDRANT	
PROPOSED FIRE HYDRANT	

BENCH MARKS

- 80d nail in PP approx. 100 ft. S. and 30 ft. W. of 39th St. and Baehr. Elev.=102.12
- 80d nail in service (light pole) at the SW corner of 37th St. and Sabin. Elev.=102.70
- "x" on SW corner of concrete standard signal pole at the NE corner of West & MacArthur. Elev.=100.14

GENERAL NOTES:

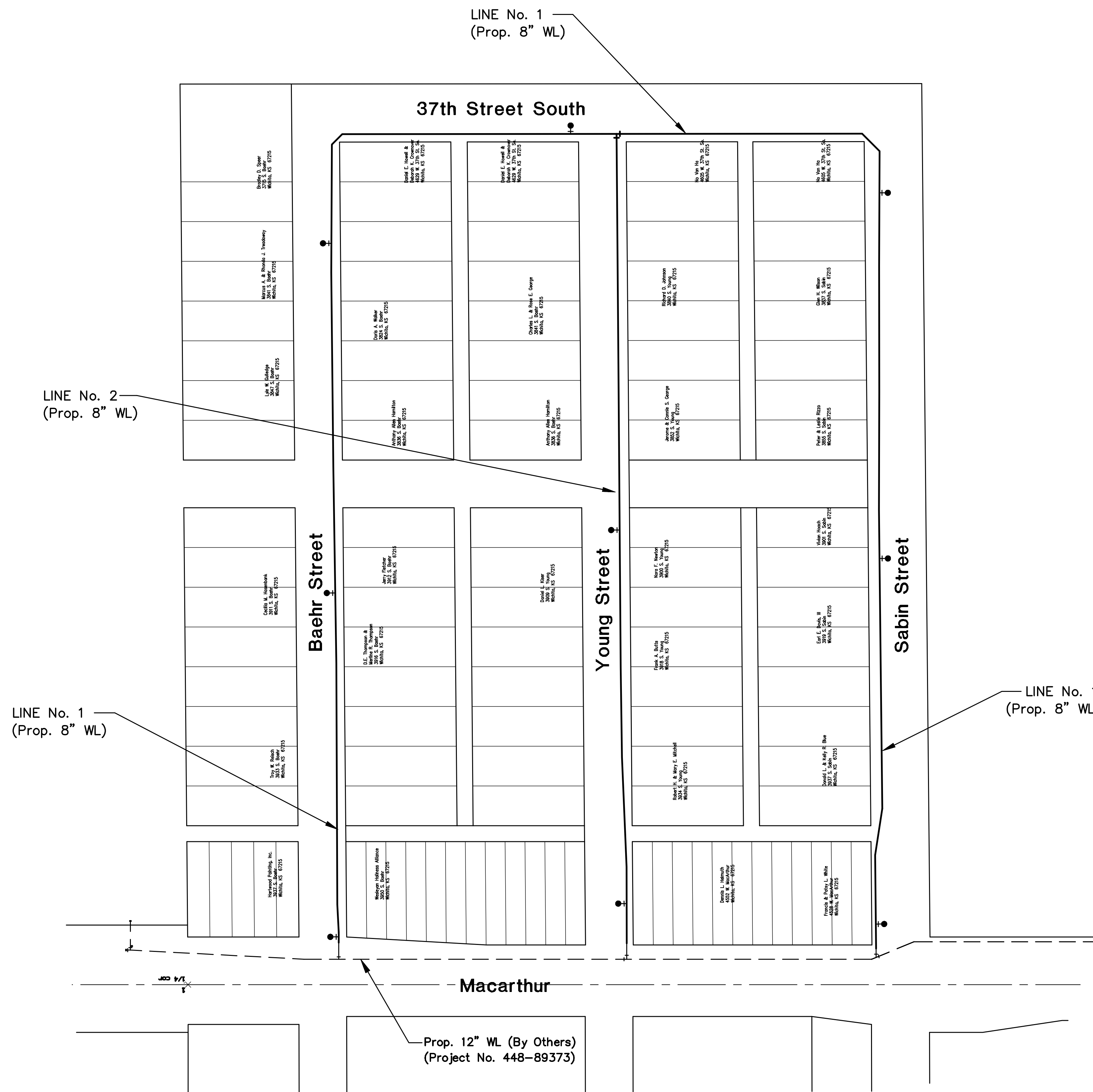
- All elevations are U.S.G.S. Datum.
- Contractor will be required to provide a minimum advance notice of twenty-four (24) hours to utility companies prior to starting any excavation as follows:

Kansas One-Call	1-800-344-7233
-----------------	----------------

The Contractor must notify the following in case of an emergency:

Cox Communications	262-4270 or 263-2061
Kansas Gas & Electric - Gas	263-7511
Kansas Gas & Electric - Electric	264-1141
Arkla Gas Company	942-8350 or 263-8161
Southwestern Bell Tel. Co.	1-800-571-2611
City of Wichita Water Department	268-4908
- All water mains and appurtenances shall be installed in accordance with City of Wichita, Kansas Standard Specifications for Water Main Installations No. 14533.
- The Water main shall be constructed on the alignment shown by the plans. Trees and shrubs in public right-of-way which are in direct conflict with proposed new construction shall be removed by the Contractor with the Engineer's approval. Trees and shrubs which are not in direct conflict with proposed new construction shall be saved and protected from damage. The cost for any necessary tree trimming, clearing and/or grubbing shall be included in the price bid for the installed water main pipe.
- Opening and closing water valves shall be done slowly to prevent damage to the water distribution system from water hammer. All valves closed by the Contractor must be reopened as new construction permits. Project Inspector must ascertain that any valve closed by the Contractor is reopened. Contractor will be permitted to operate water valves only when THE PROJECT INSPECTOR assigned to the project IS PRESENT.
- Contractor shall not start work on the project until the Project Inspector is assigned to the project and is present on the site. Any work done without inspection will be required to be uncovered for inspection.
- The Contractor shall give all property owners and/or tenants of developed property directly abutting the construction of this project a minimum of ten (10) days advance notice prior to start of construction.
- The Contractor shall be responsible for preserving property irons. The contractor will be required to re-establish any property irons which are damaged or destroyed by his construction operations. Such irons shall be re-established by a licensed land surveyor in accordance with state laws. All costs for this work shall be subsidiary to site restoration.
- The contractor shall restore all ditches, swales, road shoulders, entrances, and bank lines to their original slopes and grades except as shown otherwise.
- No services will be installed as part of this project.
- Interurban traffic generated outside the project area and local business or residential traffic generated within the project area are to be carried through construction as further promulgated by project special provisions.
- Rubble from the removal of miscellaneous structures including any trees removed and tree trimmings shall be disposed of on sites provided by the contractor. These sites shall also be approved by the Engineer as to suitability, appearance, and site location. Locations that, in the opinion of the Engineer, leave an unsightly appearance will not be approved. All disposal sites must be approved by the Kansas Department of Health and Environment. Material either stockpiled or disposed of in a flood plain will require a Kansas State Board of Agriculture permit. Any material dumped in waters of the United States or wetlands is subject to U.S. Corps of Engineers Permitting Regulations. Any material buried or stockpiled beyond approved construction limits may require archaeological investigations unless buried in a previously approved disposal location.

NOTE:
Waterline Valves to be operated by Contractor ONLY if THE PROJECT INSPECTOR is ON SITE.

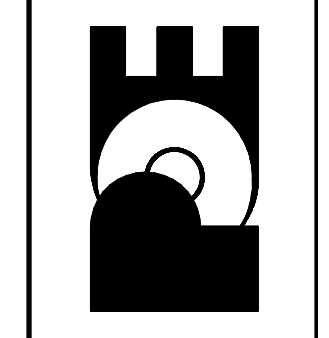


Scale: 1" = 80'

No.	Date	By	Approved	Revision

OATVILLE ADDITION
WATER DISTRIBUTION SYSTEM IMPROVEMENTS
WATERLINE KEY MAP
CITY OF WICHITA, KANSAS
JAMES ARMOUR, P.E. - CITY ENGINEER
Proj.# 448-90072 O.C.A.# 735264

POE & ASSOCIATES, INC.
CONSULTING ENGINEERS
5940 E. Central, Suite 200 • Wichita, KS 67208-4242
Phone 316/685-4114 • FAX 316/685-4444



FINAL
Designed By: J. Dickman
Drawn By: M. Tucker
Poe Job No.: 1805A
Date: May 2008