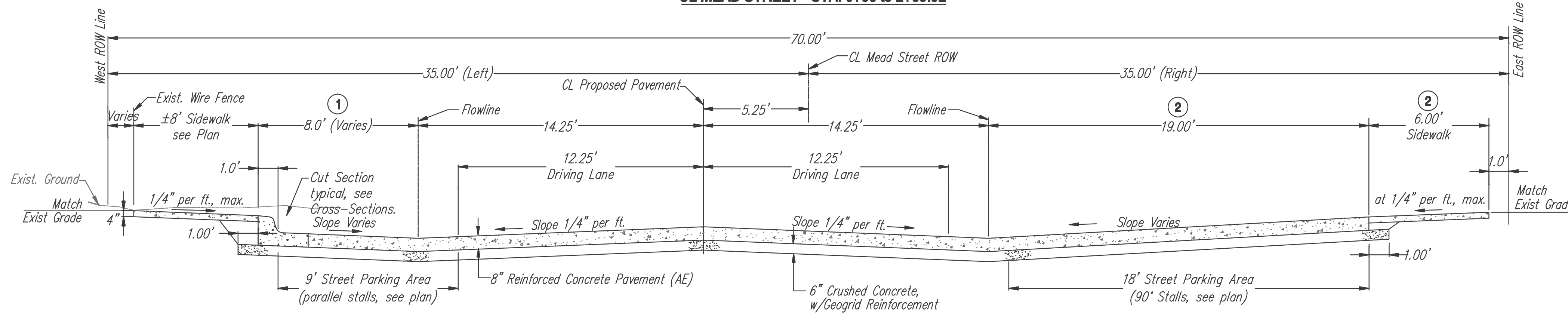
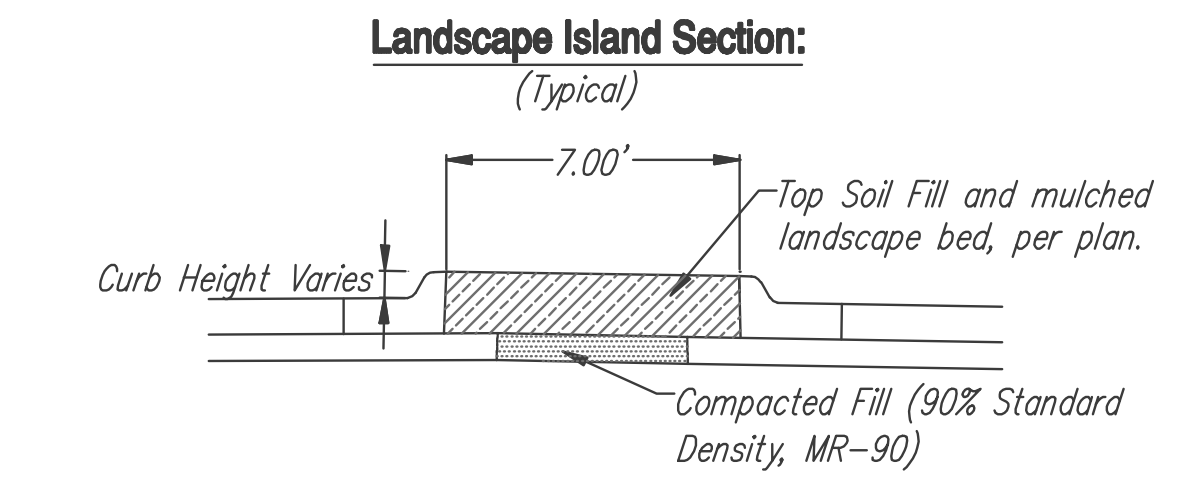


CL MEAD STREET - STA. 0+00 TO 2+69.92

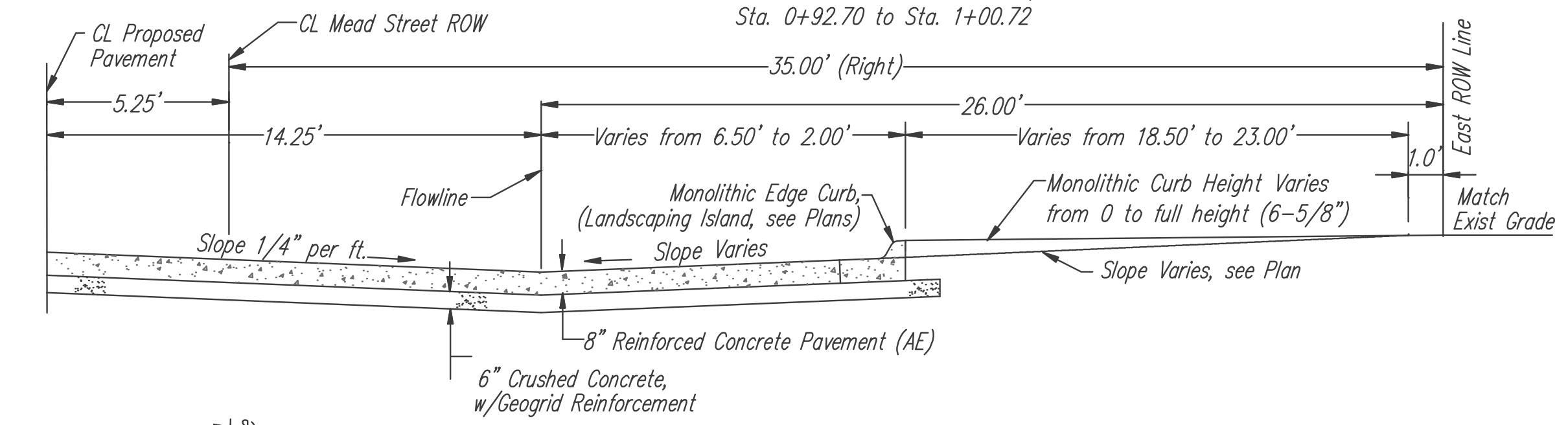


1 Varies from 1.00' @ Sta. 0+00 to 8.00' @ Sta. 0+12.38
 Varies from 8.00' @ Sta. 1+79.46 to 1.00' @ Sta. 1+92.84
 1.00' from Sta. 1+92.84 to Sta. 2+20.78
 Varies from 1.00' @ Sta. 2+20.78 to 8.00' @ Sta. 2+34.20

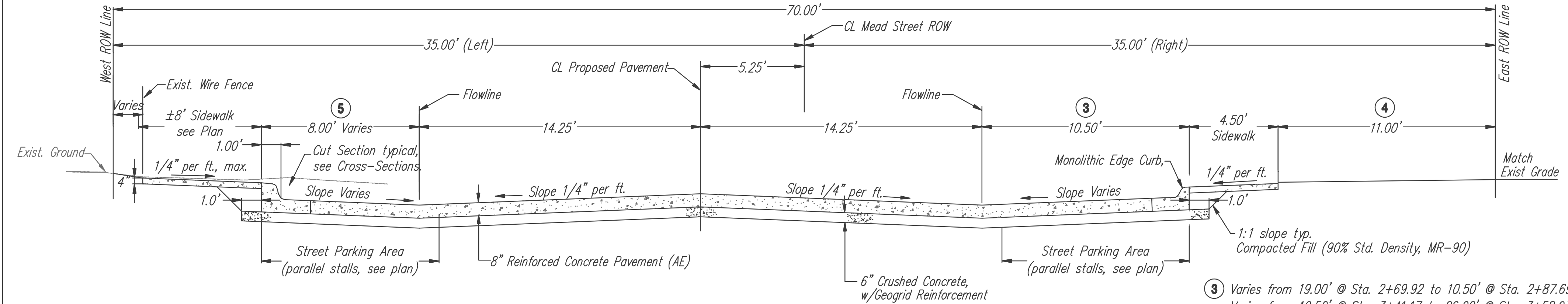


2 Varies at Raised Landscape Islands (Rt.):

Sta. 0+00 to Sta. 0+05.00,
 Sta. 0+21.50 to Sta. 0+29.50,
 Sta. 0+65.69 to Sta. 0+73.69,
 Sta. 0+92.70 to Sta. 1+00.72

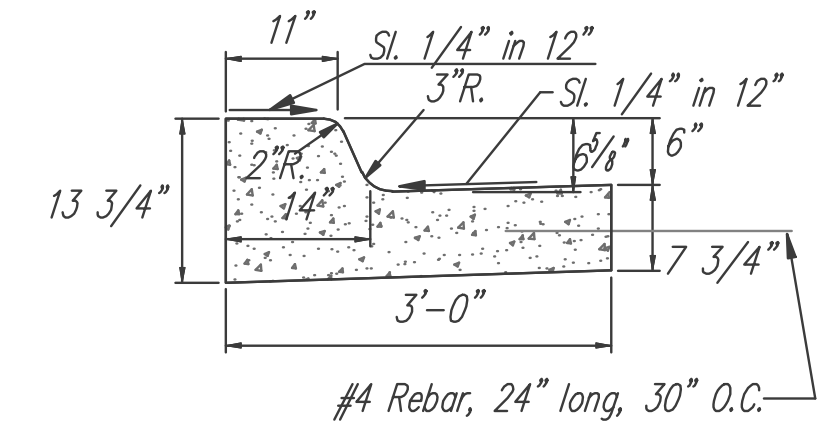


CL MEAD STREET - STA. 2+69.92 TO 3+58.93

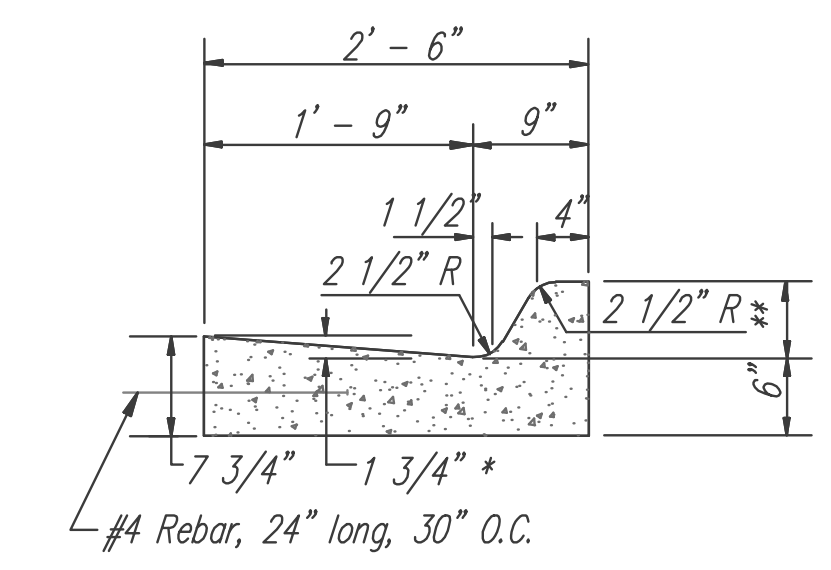


3 Varies from 19.00' @ Sta. 2+69.92 to 10.50' @ Sta. 2+87.69
 Varies from 10.50' @ Sta. 3+41.17 to 26.00' @ Sta. 3+58.93
4 Varies from 1.00' @ Sta. 2+69.92 to 11.00' @ Sta. 2+87.69
5 Varies from 8.00' @ Sta. 3+44.53 to 1.00' @ Sta. 3+58.93

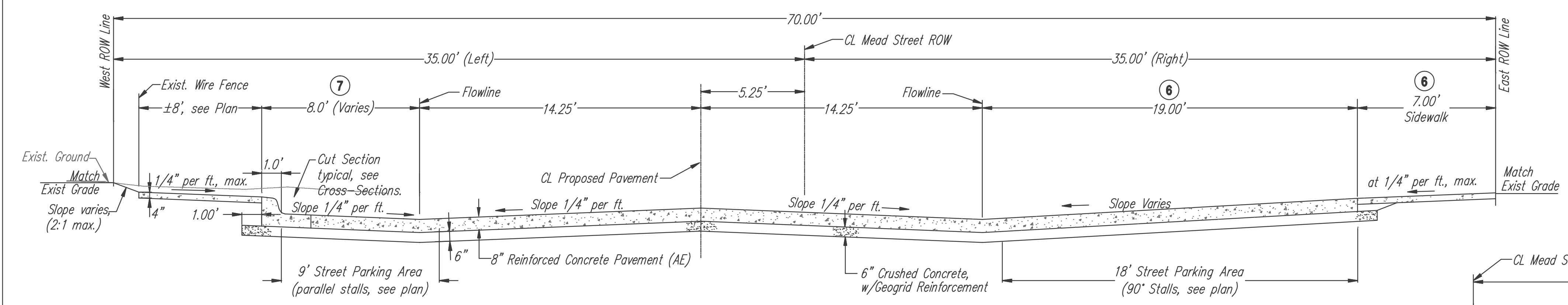
12" COMBINED CURB & GUTTER MODIFIED



MONOLITHIC CURB & GUTTER



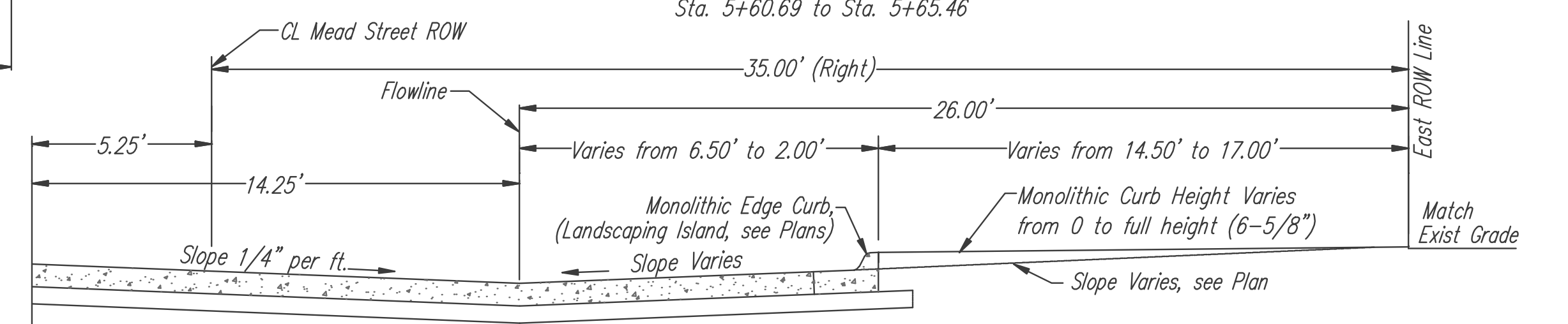
CL MEAD STREET - STA. 4+07.50 TO 5+65.46



7 Varies from 8.00' @ Sta. 5+52.09 to 1.00' @ Sta. 5+65.46

6 Drive Approaches (Rt.)

Sta. 5+01.17 to Sta. 5+09.19,
 Sta. 5+32.19 to Sta. 5+40.20,
 Sta. 5+60.69 to Sta. 5+65.46



GENERAL NOTES
 FABRIC BASE REINFORCEMENT SHALL BE B X 1100 GEOGRID AS MANUFACTURED BY TENSAR CORPORATION OR APPROVED EQUAL. FABRIC BASE REINFORCEMENT SHALL BE INSTALLED IN ACCORDANCE WITH MANUFACTURER'S RECOMMENDATIONS. CRUSHED ROCK SHALL BE UNIFORMLY GRADED FROM 1-1/2" MAXIMUM SIZE TO NOT MORE THAN 10% PASSING A NO. 200 SIEVE. ROCK QUALITY SHALL BE THE SAME AS SPECIFIED FOR COARSE AGGREGATE FOR CONCRETE MIXES.

* Positive or Negative slope per plans.
 ** Height varies per plans.

YOUNG & ASSOCIATES, P.A.
 Civil Engineering - Surveying - Land Development

100 S. Geologic, Derby, KS 67037
 Tele: (316)788-2552, Fax: (316)788-4408, email: engineering@yngpa.com
 Copyright 2007 by Young & Associates, P.A. All rights reserved. Prepared in the United States of America. This document or parts thereof, or design concepts contained herein, are deemed confidential and proprietary information of Young & Associates, P.A. and may not be reproduced in any form without the specific written permission of Young & Associates, P.A. This plan and design is the exclusive property of Young & Associates, P.A. The delivery of the original or copies thereof does not constitute a representation.

TYPICAL PAVEMENT SECTION

Street and Storm Sewer Improvements
 Mead Street, from Central to 3rd Street
 City of Wichita
 Sedgwick County, Kansas

scale: as noted
drawn by: cc
checked by: cry
date: 9/09/08
P/N: 07-246
revisions: