

CAUTION !!!  
Buried Electric Lines

SS CL Sta. 0+00 to Sta. 1+00.00  
Install 100.00 LF 8" SS

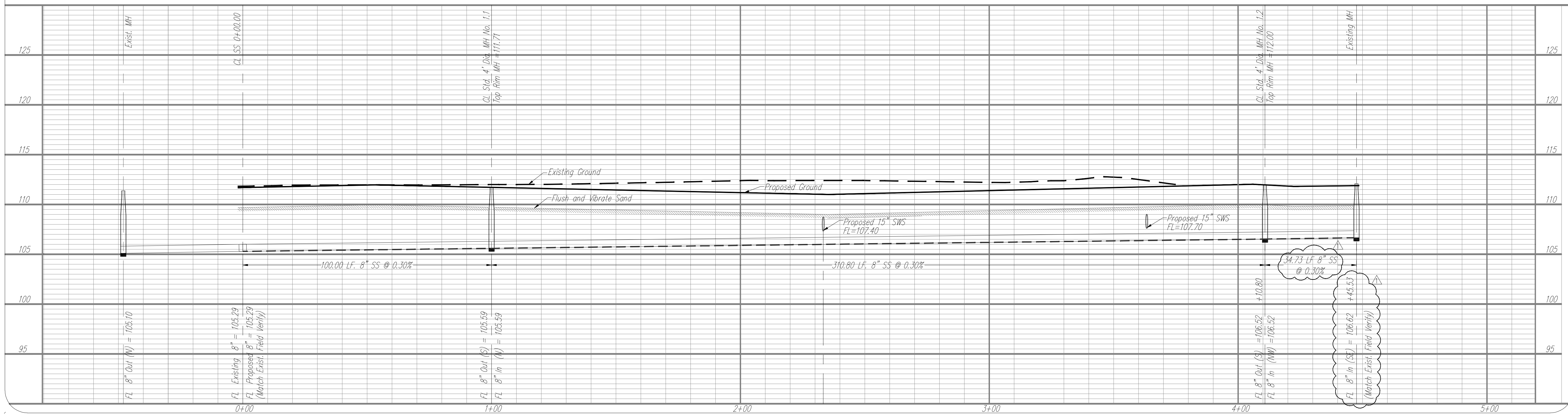
SS CL Sta. 1+00.00 to Sta. 4+10.80  
Install 310.80 LF 8" SS

SS CL Sta. 4+10.80 to Sta. 4+45.53  
Install 34.73 LF 8" SS

Remove Existing SS  
Sweep (Approx. 38 F.T.)

**SPECIAL NOTES:**

- The Contractor shall use Best Management Practices to control erosion and sediment discharge in all disturbed areas of construction. The Contractor shall provide all necessary materials, and maintain temporary erosion and sediment controls during and after construction.
- Unless otherwise noted all dimensions are measured center of structure to center of structure.
- The Contractor shall field verify horizontal and vertical locations of existing buried utility lines prior to construction and report any discrepancies to the Engineer.



**YOUNG & ASSOCIATES, P.A.**  
Civil Engineering • Surveying • Land Development  
100 S. Georgia, Derby, KS 67037  
Tele: (316) 788-2552, fax: (316) 788-4408, email: engineering@yga.com

Copyright 2002, by Young & Associates, P.A. All rights reserved. Prepared by the United States of America. This document, or parts thereof, or design concepts contained herein, are deemed confidential and proprietary information of Young & Associates, P.A. and may not be reproduced, stored in a retrieval system, or transmitted in any form or by any means, electronic, mechanical, photocopying, recording, or by any information storage and retrieval system, without the prior written permission of Young & Associates, P.A. The liability of the engineer or engineer-in-charge for errors and omissions shall not be limited by this disclaimer.

**8" SANITARY SEWER - PLAN & PROFILE**

Street and Storm Sewer Improvements  
Mead Street, from Central to 3rd Street  
City of Wichita  
Sedgewick County, Kansas

scale: as noted  
drawn by: CAC  
checked by: CRY  
date: 9/9/08  
P/N: 07-246  
revisions:  
1/6/09