

# LATERAL 56, COWSKIN CREEK INTERCEPTOR SEWER

## Sanitary Sewer Improvements

to serve

# THE WOODS ADDITION

## CITY OF WICHITA, KANSAS

James L. Armour, P.E. City Engineer

Duling Construction - Contractor  
 S. Cody - City of Wichita, Inspector  
 Date Released: 08/21/08  
 As-built  
 Risers and Stubs  
 pdf: APR 11/3/08

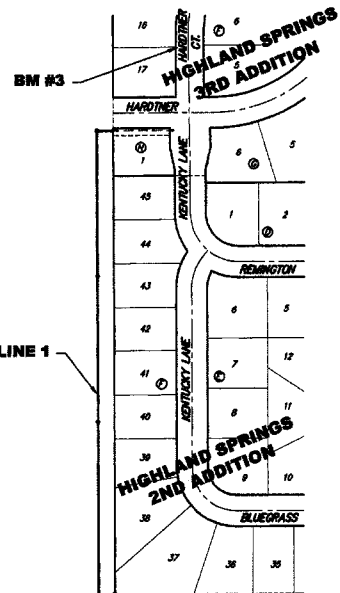
Project Number  
 468-84129

O.C.A. Number  
 744268

Scale: 1" = 200'

NW 1/4, Sec. 23,  
 T-27-S, R-2-W,  
 6th P.M.

LEON ALBERT  
 729-0288



### BENCHMARKS

Bm #1: City Of Wichita  
 Benchmark Disc, Top Of Curb At  
 West End Of Curb Return, NW  
 Corner Of Intersection Of City  
 View And Sheriac Cir. In Shadow  
 Woods Addition.  
 Elev. = 1386.66 NGVD29

Bm #2: City Of Wichita  
 Benchmark Disc, Top Of Curb By  
 Fire Hydrant At West End Of  
 Curb Return, NW Corner Of  
 Intersection Of Sheriac Cir. And  
 Sheriac Ct., South Of SE Corner  
 Of Lot 13, Block B, Shadow  
 Woods Addition.  
 Elev. = 1392.11 NGVD29

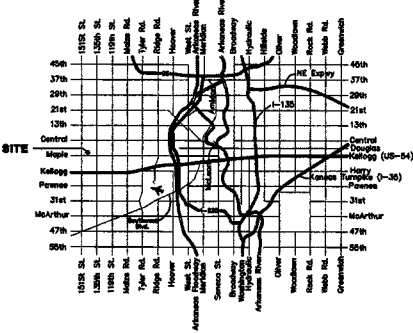
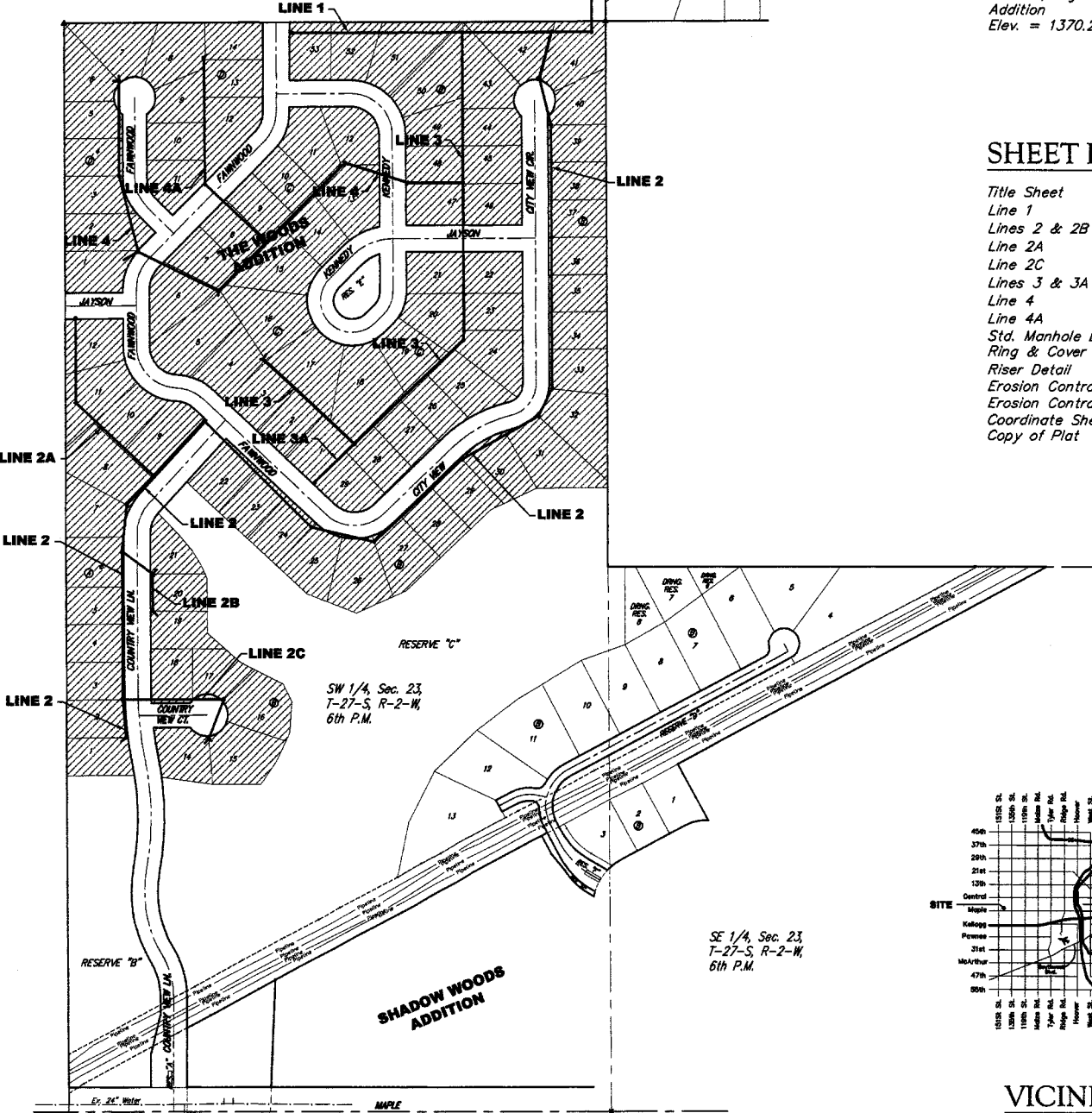
Bm #3: "□" Cut In Top Of West  
 Curb Between Lots 16 And 17,  
 Block F, Highland Springs 3rd  
 Addition  
 Elev. = 1370.21 NGVD29

### SHEET INDEX

|                      |       |
|----------------------|-------|
| Title Sheet          | 1     |
| Line 1               | 2-4   |
| Lines 2 & 2B         | 5-9   |
| Line 2A              | 10    |
| Line 2C              | 11    |
| Lines 3 & 3A         | 12-13 |
| Line 4               | 14-15 |
| Line 4A              | 16    |
| Std. Manhole Detail  | 17    |
| Ring & Cover Detail  | 18    |
| Riser Detail         | 19    |
| Erosion Control Plan | 20-21 |
| Erosion Control BMPs | 22-25 |
| Coordinate Sheet     | 26-27 |
| Copy of Plat         | 28-31 |

### GENERAL NOTES:

- Contractor will be required to provide notice to utility companies a minimum of forty-eight (48) hours prior to any excavation, as follows:  
 Kansas One-Call 687-2470  
 The Contractor must notify the following in case of an emergency:  
 Cox Communications 262-4270  
 Kansas Gas Service 1-888-482-4950  
 Westar Energy 383-8650  
 Aquila Energy 1-800-303-0357  
 AT&T 1-800-288-2020  
 City of Wichita Water Dept. 268-4563  
 City of Wichita Sewer Maint. 268-4024  
 City of Wichita Storm Sewer Maint. 268-4090  
 City of Wichita Traffic Maint. 268-4034  
 Conoco Phillips Pipeline Co. 1-877-267-2900  
 Southern Star Pipeline Co. 529-6600  
 Kinder-Morgan Pipeline Co. 1-888-844-5658  
 Qwest Midstream Partners L.P. 1-800-467-2751
- Utility service lines, poles, valve boxes, meters, and etcetera are to be adjusted as necessary by others prior to construction unless the plans specifically call for their adjustment by the Contractor or unless the plans specifically identify a utility to be adjusted by its owner during construction. Existing utilities and their location, as shown on the plans, represent the best information obtainable for design. The Contractor will be required to work around existing utilities within the right-of-way which do not conflict with proposed construction.
- Rubble from the removal of miscellaneous structures and excess excavation which is to be wasted shall be disposed of on sites to be provided by the Contractor. These sites shall be approved by the Engineer as to suitability, appearance and site location. Locations, in the opinion of the Engineer, that will leave an unsightly appearance will not be approved. All disposal sites must be approved by the Kansas Department of Health and Environment. Material either stockpiled or disposed of in a flood plain would require a Kansas State Board of Agriculture permit. Any material dumped in waters of the United States or wetlands is subject to U.S. Corps. of Engineers permitting regulations. Any material buried or stockpiled beyond approved construction limits would require additional archaeological investigations unless buried in a previously approved borrow location.
- Trees and shrubs in public right-of-way which are in direct conflict with proposed new construction shall be removed by the Contractor ONLY with the Developer or Baughman Company approval. Trees and shrubs which are not in direct conflict with proposed new construction shall be saved and protected from damage.
- The Contractor shall give all property owners and/or tenants of developed property abutting the construction of this project a minimum of ten (10) days notice prior to start of construction.
- The Contractor shall be responsible for preserving property irons. The Contractor will be required to re-establish any property irons which are damaged or destroyed by his construction operations. Such irons shall be re-established by a licensed land surveyor in accordance with state laws.
- The Contractor shall be responsible for maintaining continuous flow of sewage through construction. Contractor's proposed method for maintaining sewage flow shall be approved by the Engineer. Cost of maintaining flow of sewage through construction will not be paid for directly and this cost shall be considered as subsidiary to the other pay items of work.
- All existing and proposed erosion control measures including silt fencing, erosion control mat, straw bales, inlet barriers, and const. entrance shall be maintained throughout construction by the contractor and until project is accepted by the City of Wichita. The on-site engineer shall complete weekly reports on the status of erosion control measures. The contractor shall be required to comply with maintenance and/or replacement of erosion control measures as determined by the on-site engineer until project is accepted by City of Wichita.
- When connecting to existing manhole or stub, the contractor shall reshape manhole bottom or adjust the existing stub's alignment or elevation as necessary. Cost shall be subsidiary to project.
- Following construction, all disturbed areas shall be regraded and restored to preconstruction grades. Any excess earth remaining from excavation shall be wasted on-site within The Woods Addition at a location to be determined by the engineer.
- All areas disturbed during construction shall be seeded at 300 lbs./acre with Rye Grass immediately following construction in that area. Contractor shall prepare ground per City of Wichita Specifications. All costs associated with seeding shall be included in bid item "Project Seeding"
- Contractor shall install Carsonite Utility Markers (CUM-375) at locations noted on the plans per Manufacturers Specifications. The Markers shall be green in color and a minimum of 62" in length. Contact Engineer for decal information prior to construction. Contact Carsonite Composites at 1-800-648-7916 for Pricing and Ordering Information. All costs associated with Manhole Markers shall be subsidiary to bid item, "Standard Manhole."
- Contractor shall backfill front loaded sanitary sewer trenches with sand, water-jetted and vibrated. All costs of materials and equipment required for backfilling, jetting and vibrating shall be included in bid item "Sand Backfill Jetted and Vibrated".
- No construction or equipment operation shall be allowed within ConocoPhillips, or Qwest easements without first contacting a representative from the respective company. No work shall be allowed within these easements until permission has been granted by the pipeline companies and/or encroachment agreements have been signed.
- Contractor shall contact Leon Albert 729-0288 at least 2 weeks prior to beginning construction and set up a meeting between Mr. Albert, the City of Wichita, and Contractor.
- The developer for this project is Jay Russell, (316) 722-2417
- The contractor shall be required to start construction no later than March 17, 2008 with penalty of \$500/day for each working day the contractor has not started. The contractor shall be required to complete the construction of Lines 1, 2, 2A, 2B, and 2C prior to any other construction. Contractor shall be required to coordinate construction with water line construction contractor.



### VICINITY MAP

BENEFIT DISTRICT



Baughman Company, P.A. 315 Ellis St. Wichita, KS 67211 P 316-262-7271 F 316-262-0149  
 ENGINEERING | SURVEYING | PLANNING | LANDSCAPE ARCHITECTURE

