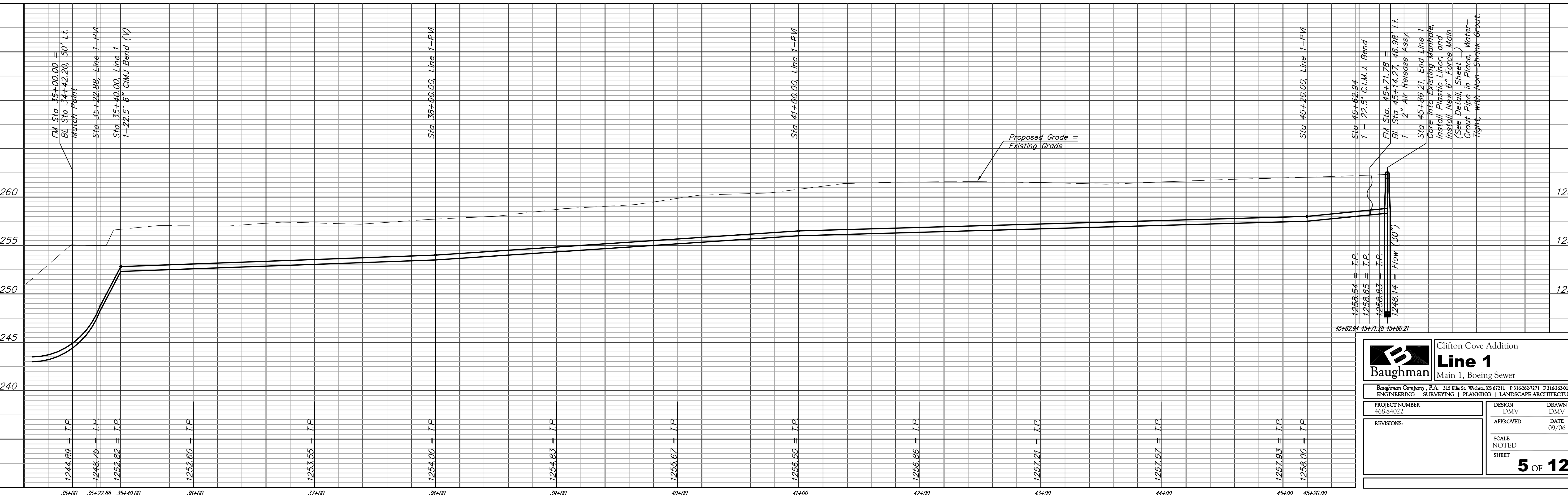
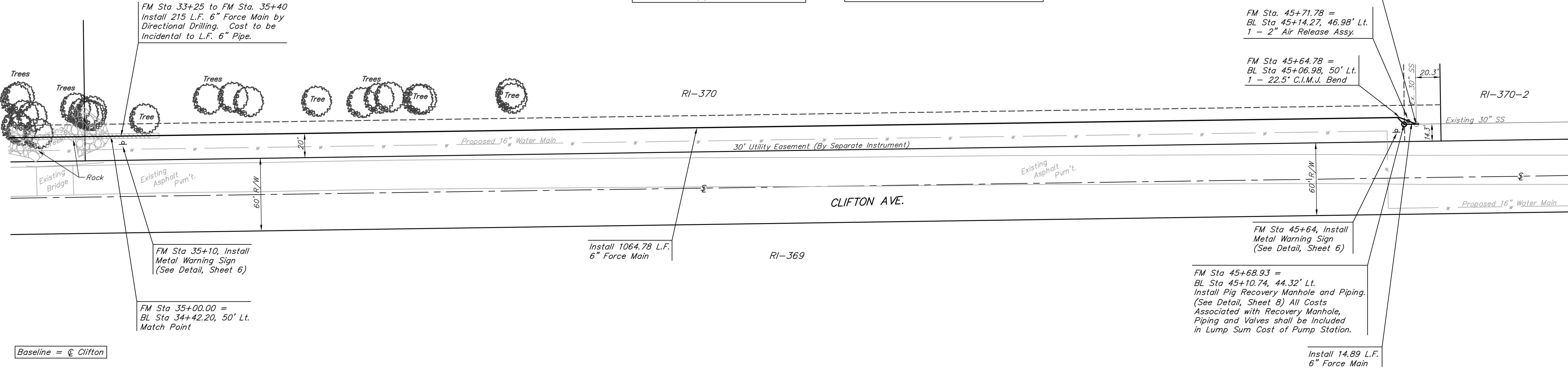


**BENCHMARK:**  
 Arkansas River bridge & 63rd St. S. City of  
 Wichita Benchmark Disc. SW Cor. of bridge,  
 top of hubguard. 500'± E. of Grove.  
 Elev. = 1269.95 NGVD29 (per City record)

Brass plate on the NE wall of Arkansas  
 River bridge & 63rd St. S.  
 Elev. = 1267.48 NGVD29 (per County record)



**Scale:**  
 1" = 40' Horizontal  
 1" = 5' Vertical  
 • = Iron



		<b>Clifton Cove Addition</b> <b>Line 1</b> Main 1, Boeing Sewer	
		Baughman Company, P.A. 315 Ellis St. Wichita, KS 67211 P 316-262-7271 F 316-262-0149 ENGINEERING   SURVEYING   PLANNING   LANDSCAPE ARCHITECTURE	
PROJECT NUMBER 46S-84022	DESIGN DMV	DRAWN DMV	DATE 09/06
REVISIONS:	APPROVED	SCALE NOTED	SHEET <b>5 OF 12</b>