

WL Sta. 00+00.00 Line 1  
 BL Sta. 18+98.36 12.88 Lt  
 \*1- 30"x8" Tapping Sleeve  
 \*1- 8" Tapping Valve  
 \*1- 6" Valve Box  
 Valve Box Elev. = 198.75  
 \*To be Installed by COW  
 \*To be Paid by Contractor

WL Sta. 00+06.75 Line 1  
 BL Sta. 18+98.34 06.13 Lt  
 1- Fire Hydrant Assembly CLOW  
 L= 5.00', H= ~~5.00'~~ 6.00'  
 Buryline Elev. = 198.75  
 Valve Box Elev. = 198.75  
 1- 8" Cap (E)

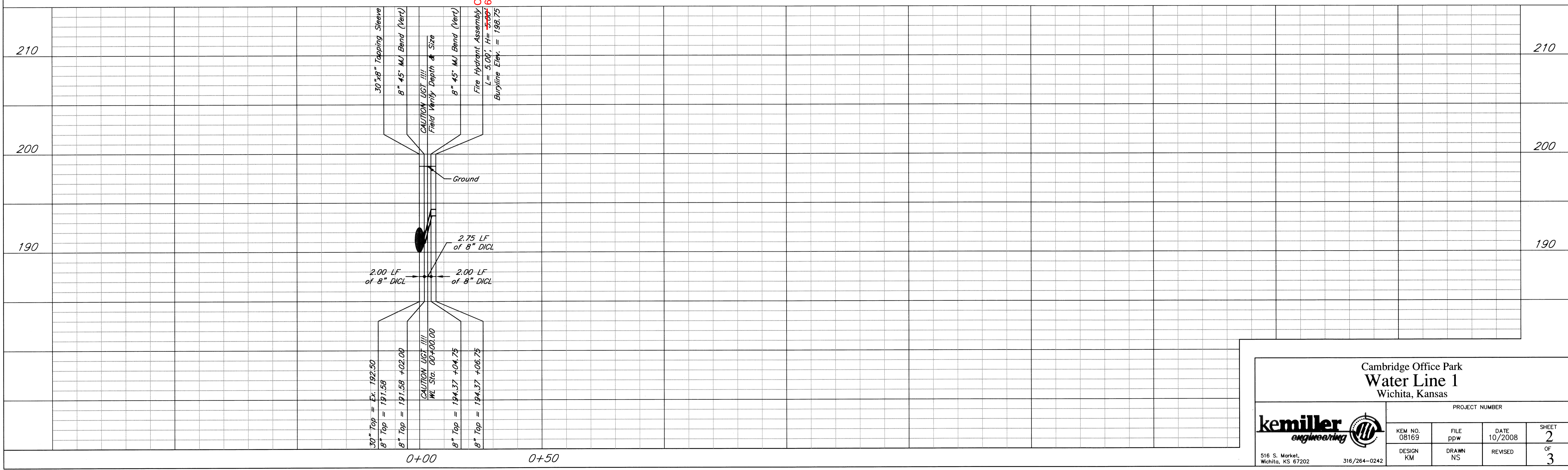
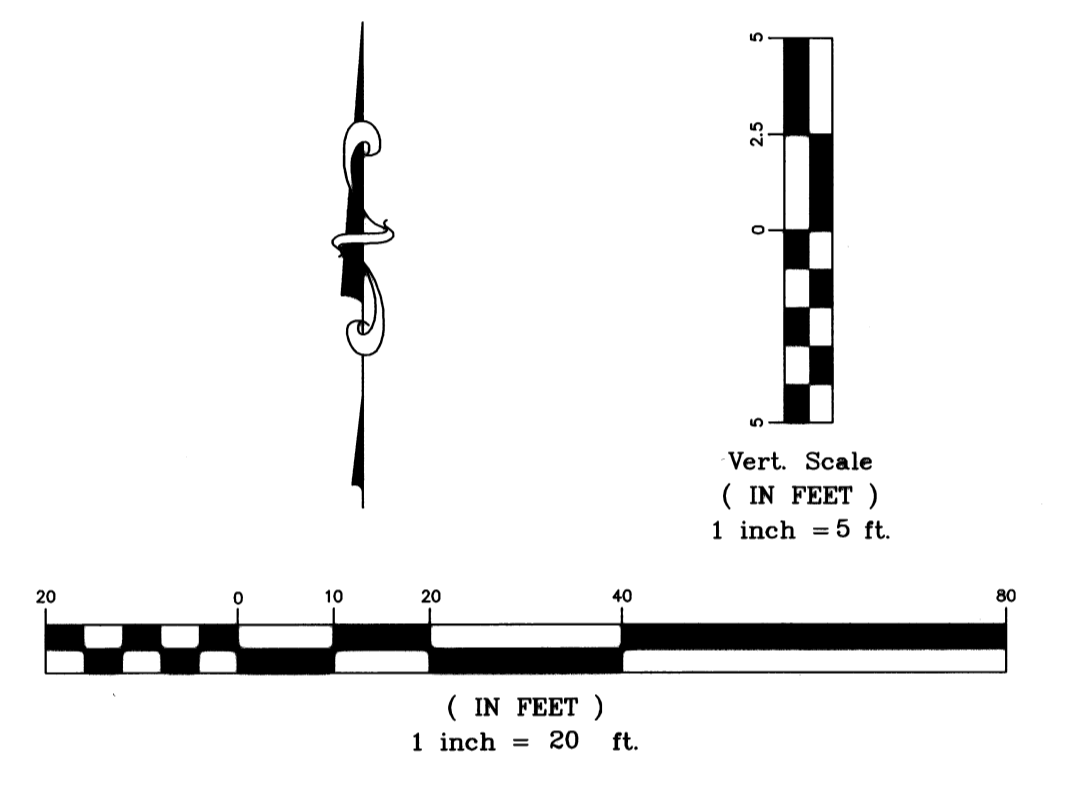
WL Sta. 00+02.00 Line 1  
 BL Sta. 18+98.36 10.88 Lt  
 1- 45" Anch. MJ Bend (Vert)  
 2.00 LF of 8" D.I.C.L.

WL Sta. 00+04.75 Line 1  
 BL Sta. 18+98.34 08+13 Lt  
 1- 45" Anch. MJ Bend (Vert)  
 2.75 LF of 8" D.I.C.L.

CAUTION UGT !!!!  
 Under Grnd Tele.  
 Field Verify Depth  
 and Size.

**General Notes:**

- Existing water main is 30" PCSC. Contractor must expose water main and measure outside diameter to insure correct size of tapping sleeve.
- All vertical bends need to be anchored.



**Cambridge Office Park**  
**Water Line 1**  
 Wichita, Kansas

PROJECT NUMBER			
<b>kemiller</b> <i>engineering</i>	KEM NO. 08169	FILE ppw	DATE 10/2008
DESIGN KM	DRAWN NS	REVISED	SHEET 2
516 S. Market, Wichita, KS 67202			OF 3
316/264-0242			