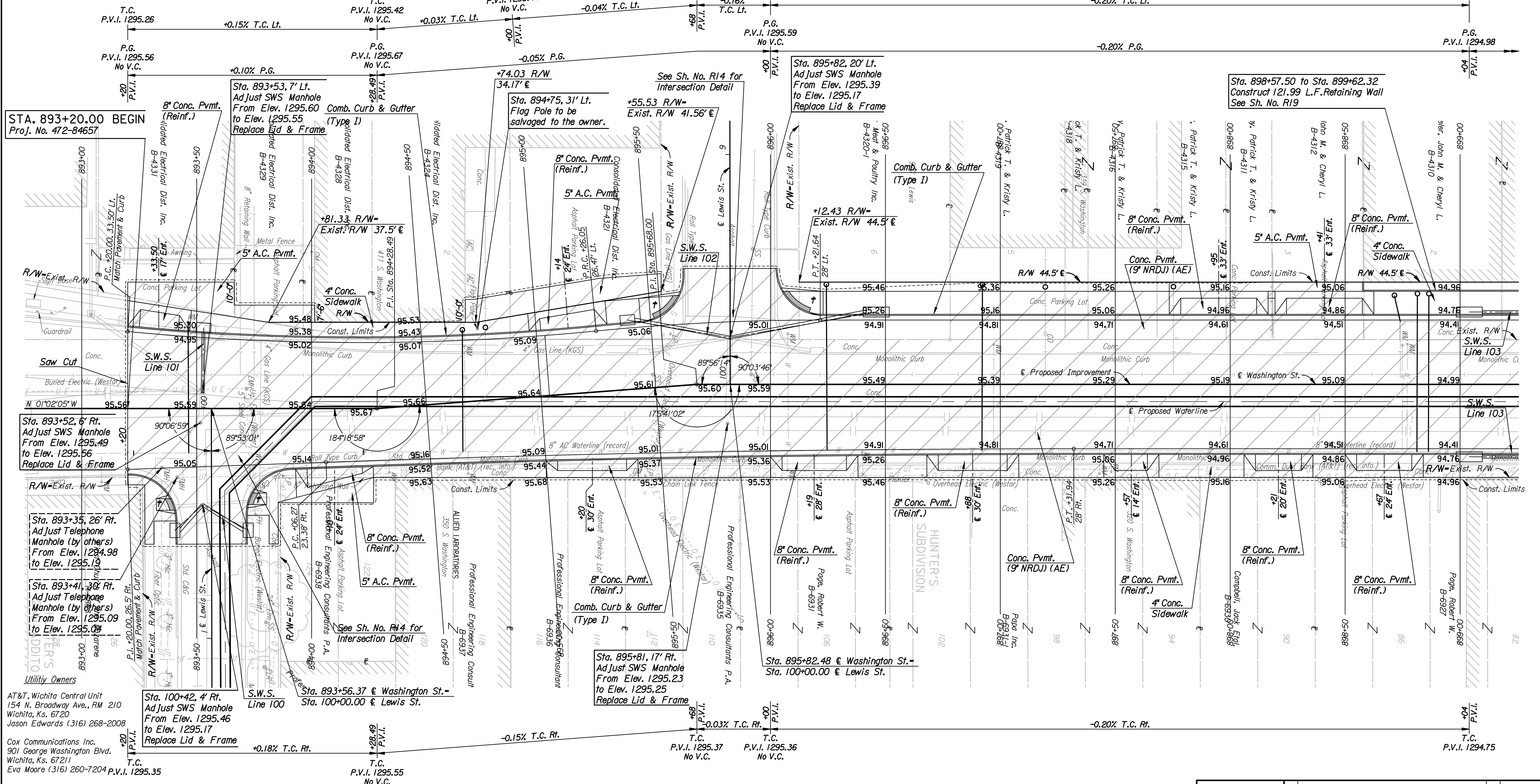


P.I. & Sta. 892+49.60
I. No Monument Set

P.I. & Sta. 894+28.49
Deflection Angle = 0°41'58" Lt.
I. No Monument Set

P.I. & Sta. 895+68.00
Deflection Angle = 0°41'58" Rt.
I. No Monument Set

Scale: 1"=20'



AT&T, Wichita Central Unit
154 N. Broadway Ave., RM 210
Wichita, Ks. 6720
Jason Edwards (316) 268-2008

Cox Communications Inc.
901 George Washington Blvd.
Wichita, Ks. 67211
Eva Moore (316) 260-7204 P.V.I. 1295.35

Kansas Gas Service
1021 E. 26th St. N.
Wichita, Ks. 67219
Jim Coe (316) 832-3126

Westar Energy
1900 E. Central Ave.
Wichita, Ks. 67214
Hank Velghe (316) 261-6828

Wichita Water and Sewer Dept.
8th Floor - City Hall
455 N. Main St.
Wichita, Ks. 67202
Greg Lolley (316) 268-4555

Utilities

Gas Kansas Gas Service
Power Westar Energy
Sanitary Sewer Wichita Water and Sanitary Sewer
Storm Water Sewer Wichita Water and Sanitary Sewer
Telephone AT&T
Television Cox Communications
Water Wichita Water and Sanitary Sewer

BM*21 R.R. spike W face power pole on E side of alley
E of Washington St., 70' ± N of Lewis St.
188.04' Rt. & Sta. 894+37.08 Elev. = 1297.04

REMOVAL OF EXISTING STRUCTURES *		
STATION	SIDE	ITEM
893+39	Rt.	SWS Curb Inlet & 15" RCP
893+56	Lt.	SWS Curb Inlet & 15" RCP
893+74	Rt.	SWS Curb Inlet
893+75	Rt.	Sign
893+78	Rt.	Sign
894+34	Lt.	Sign
894+75	Lt.	Flag Pole
895+45	Lt.	SWS Curb Inlet & 15" VCP

* For Information Only

REMOVAL OF EXISTING STRUCTURES *		
STATION	SIDE	ITEM
895+55	Lt.	Sign
895+58	Lt.	Light Pole
895+61	Lt.	Sign
896+20	Lt.	SWS Curb Inlet & 15" RCP
897+24	Rt.	Sign
897+77	Lt.	Sign
897+94	Rt.	Sign
898+18	Lt.	Guard Rail

* For Information Only

LEGEND

Pavement Removal

Truncated Domes

Wheelchair Ramp

BM*IC Chis. "D" on top of curb at N end of curb return at NE corner of Waterman St. and Washington St.
34.72' Rt. & Sta. 894+37.08 Elev. = 1294.95

No.	Revision	By	Date
	WASHINGTON STREET		

PLAN
STA. 893+00 TO STA. 899+00

JAMES L. ARMOUR, P.E. - CITY ENGINEER
CITY OF WICHITA PROJECT NO. 472-84657

Professional Engineering Consultants, P.A.
303 S. TOPEKA • WICHITA, KANSAS 67202
316-262-2691 • FAX 316-262-3003

Designed by MJW Job No. 05493-8
Drawn by DRP Date Dec., 2008 Sht. R4 of R73

Plotted By: dkl Date: 12/29/2008 2:30:52 PM
FILE: I:\2005\05493-8\Plan\05493-008-p1893.dgn