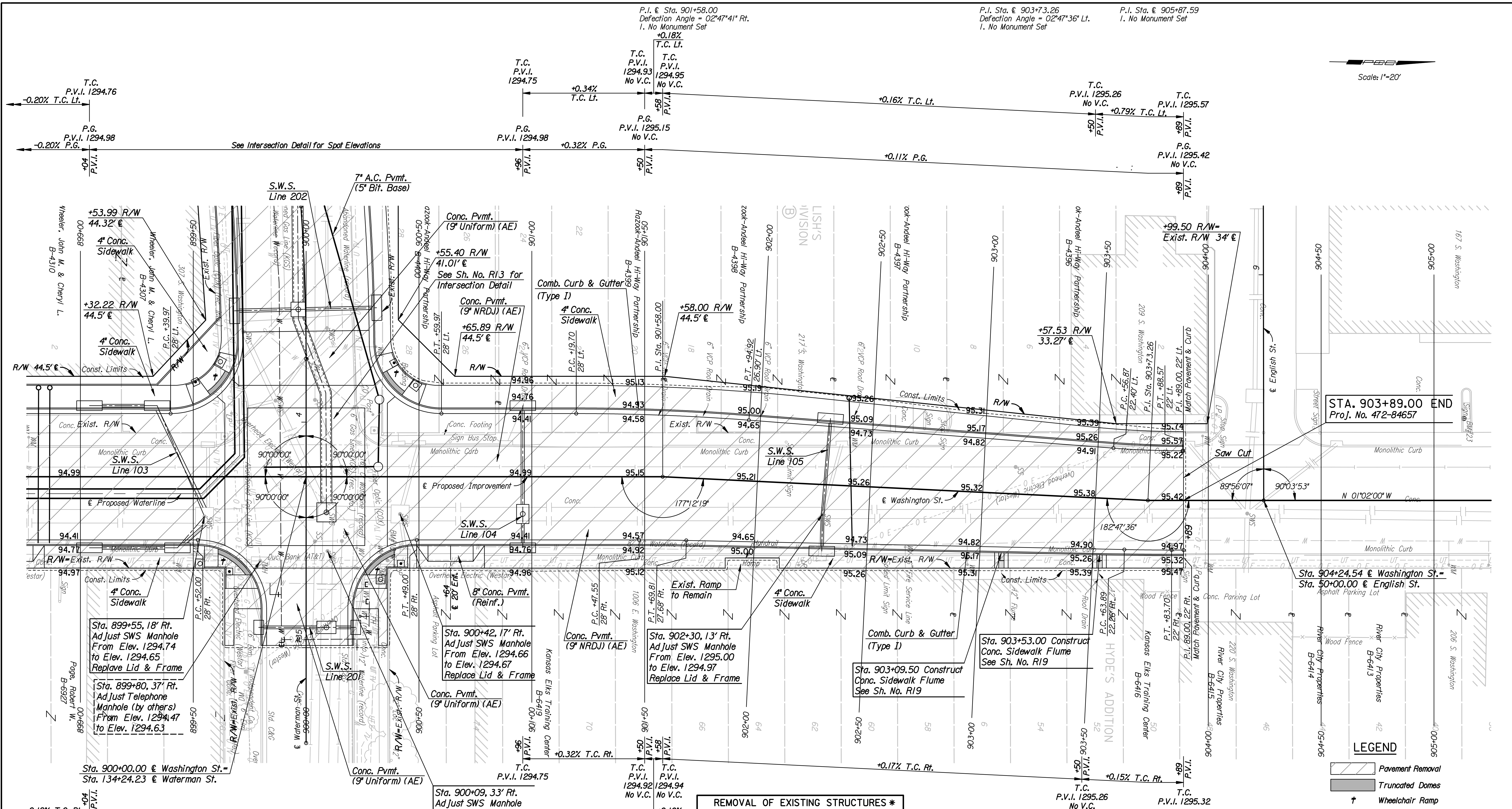


Plotted By: ak1
 Date: 12/29/2008 2:31:35 PM
 File: I:\2005\05493-8\Plan\05493-008-p1899.dgn



Scale: 1"=20'

- Utilities**
- Gas: Kansas Gas Service
 - Power: Westar Energy
 - Sanitary Sewer: Wichita Water and Sanitary Sewer
 - Storm Water Sewer: Wichita Water and Sanitary Sewer
 - Telephone: AT&T
 - Television: Cox Communications
 - Water: Wichita Water and Sanitary Sewer

- SW 1/4 Cor. Sec. 21, T27S, R1E
- Found Chis. **
 - N 1,683,062.7640 E 1,351,972.7189
 - Chis. ** W curb Washington St.
 - High edge W curb N. Bd. Washington St.
 - Chis. ** S face NE pier US-54 bridge
 - Chis. ** at face E walk Washington St. at N face N pier E. BD. bridge

BM*1C Chis. ** on top of curb at N end of curb return at NE corner of Waterman St. and Washington St.
 34.72' Rt. @ Sta. 894+37.08 Elev.=1294.95

BM*23 Chis. ** SE corner concrete sign base on E side of building at 167 S. Washington.
 36.34' Lt. @ Sta. 894+37.08 Elev.=1296.83

REMOVAL OF EXISTING STRUCTURES *

STATION	SIDE	ITEM
899+57	Lt.	SWS Curb Inlet & 15" RCP
899+57	Rt.	SWS Curb Inlet & 15" RCP
899+73	Lt.	SWS Curb Inlet & 15" RCP
899+87	Lt.	SWS Manhole & 36" VCP
900+09	Rt.	SWS Manhole
900+29	Lt.	Post
900+41	Lt.	SWS Curb Inlet & 15" RCP
900+44	Rt.	SWS Curb Inlet & 15" RCP
900+50	Lt.	SWS Curb Inlet & 18" RCP
900+64	Lt.	Sign
900+89	Lt.	SWS Curb Inlet & 15" RCP

* For Information Only

REMOVAL OF EXISTING STRUCTURES *

STATION	SIDE	ITEM
902+12	Lt.	Sign
902+29	Rt.	SWS Curb Inlet & 15" RCP
902+36	Lt.	SWS Curb Inlet & 15" RCP
902+61	Rt.	Sign
902+73	Lt.	Sign
902+80	Lt.	Sign
903+10	Rt.	12" Sidewalk Flume
903+53	Rt.	12" Sidewalk Flume
903+88	Rt.	Sign

* For Information Only

- LEGEND**
- Pavement Removal
 - Truncated Domes
 - Wheelchair Ramp

WASHINGTON STREET

PLAN
 STA. 899+00 TO STA. 905+00

JAMES L. ARMOUR, P.E.—CITY ENGINEER
 CITY OF WICHITA PROJECT NO. 472-84657

Professional Engineering Consultants, P.A.
 303 S. TOPKA • WICHITA, KANSAS 67202
 316-262-2691 • FAX 316-262-3003

Designed by: MJW Job No: 05493-8
 Drawn by: DRP Date: Dec., 2008 Sht. R5 of R73