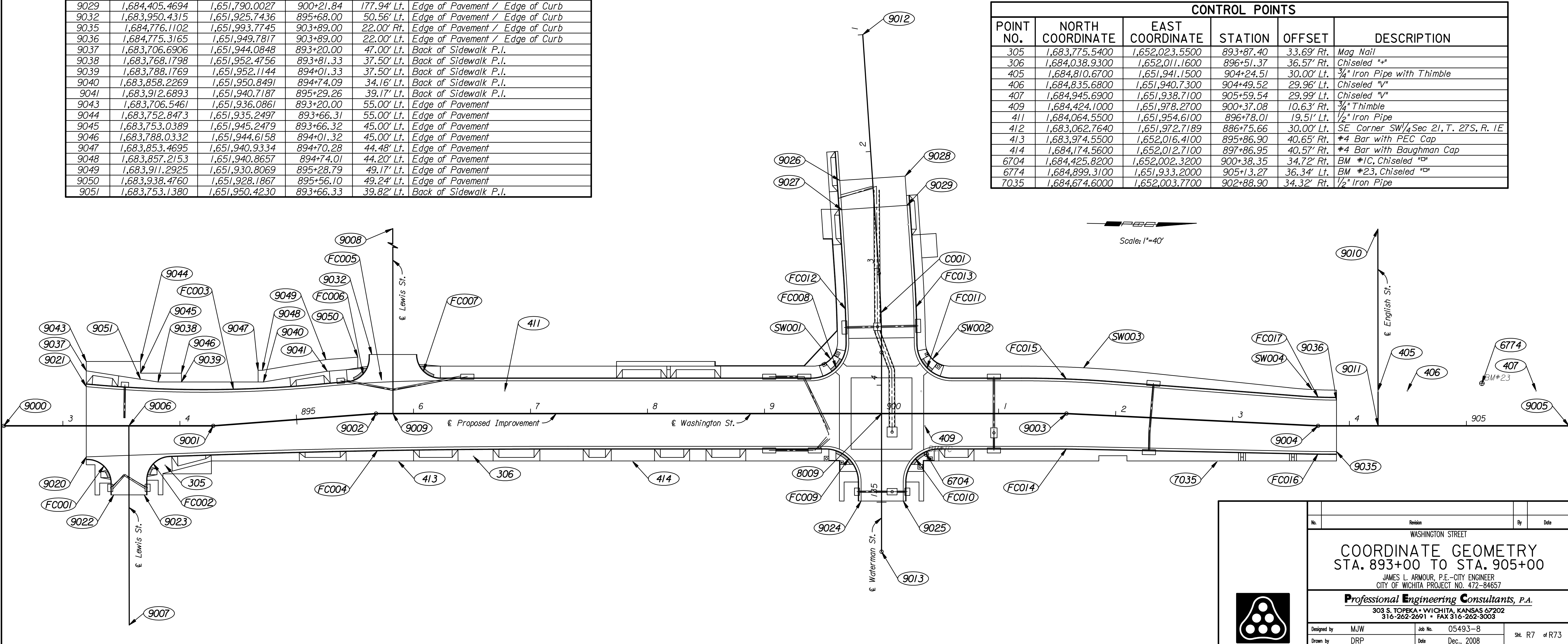


COORDINATE TABLE					
POINT NO.	NORTH COORDINATE	EAST COORDINATE	STATION	OFFSET	DESCRIPTION
8009	1,684,386.8432	1,651,968.3051	900+00.00	0.00' Rt.	Washington & Waterman Centerline Point
9000	1,683,637.1551	1,651,992.3485	892+49.60	0.00' Rt.	Washington Centerline Point
9001	1,683,816.0070	1,651,989.1179	894+28.49	0.00' Rt.	Washington Centerline Point
9002	1,683,954.9137	1,651,976.1071	895+68.00	0.00' Rt.	Washington Centerline Point
9003	1,684,544.8175	1,651,965.4516	901+58.00	0.00' Rt.	Washington Centerline Point
9004	1,684,759.9719	1,651,972.0621	903+73.26	0.00' Rt.	Washington Centerline Point
9005	1,684,974.2715	1,651,968.1960	905+87.59	0.00' Rt.	Washington Centerline Point
9006	1,683,743.9011	1,651,990.4204	893+56.37	0.00' Rt.	Lewis Centerline Point
9007	1,683,747.3193	1,652,160.5274	893+56.71	170.14' Rt.	Lewis Centerline Point
9008	1,683,963.2757	1,651,656.4367	895+82.13	319.47' Lt.	Lewis Centerline Point
9009	1,683,969.3946	1,651,975.8455	895+82.48	0.00' Rt.	Lewis Centerline Point
9010	1,684,808.0282	1,651,803.1439	904+24.35	168.02' Lt.	English Centerline Point
9011	1,684,811.2488	1,651,971.1410	904+24.54	0.00' Rt.	English Centerline Point
9012	1,684,364.9012	1,651,644.9407	899+83.90	323.71' Lt.	Waterman Centerline Point
9013	1,684,388.9747	1,652,086.3088	900+00.00	118.02' Rt.	Waterman Centerline Point
9020	1,683,708.0180	1,652,017.5728	893+20.00	26.50' Rt.	Edge of Pavement / Edge of Curb
9021	1,683,706.9343	1,651,957.5785	893+20.00	33.50' Lt.	Edge of Pavement / Edge of Curb
9022	1,683,732.0885	1,652,049.6423	893+43.49	59.00' Rt.	Edge of Pavement / Edge of Curb
9023	1,683,758.0833	1,652,049.1199	893+69.49	58.95' Rt.	Edge of Pavement / Edge of Curb
9024	1,684,370.6965	1,652,043.3821	899+82.50	74.77' Rt.	Edge of Pavement / Edge of Curb
9025	1,684,406.6906	1,652,042.7319	900+18.50	74.77' Rt.	Edge of Pavement / Edge of Curb
9026	1,684,347.5344	1,651,769.8863	899+64.28	199.10' Lt.	Edge of Pavement / Edge of Curb
9027	1,684,349.6750	1,651,794.7971	899+65.97	174.15' Lt.	Edge of Pavement / Edge of Curb
9028	1,684,403.3288	1,651,765.0920	900+20.15	202.88' Lt.	Edge of Pavement / Edge of Curb
9029	1,684,405.4694	1,651,790.0027	900+21.84	177.94' Lt.	Edge of Pavement / Edge of Curb
9032	1,683,950.4315	1,651,925.7436	895+68.00	50.56' Lt.	Edge of Pavement / Edge of Curb
9035	1,684,776.1102	1,651,993.7745	903+89.00	22.00' Rt.	Edge of Pavement / Edge of Curb
9036	1,684,775.3165	1,651,949.7817	903+89.00	22.00' Lt.	Edge of Pavement / Edge of Curb
9037	1,683,706.6906	1,651,944.0848	893+20.00	47.00' Lt.	Back of Sidewalk P.I.
9038	1,683,768.1798	1,651,952.4756	893+81.33	37.50' Lt.	Back of Sidewalk P.I.
9039	1,683,788.1769	1,651,952.1144	894+01.33	37.50' Lt.	Back of Sidewalk P.I.
9040	1,683,858.2269	1,651,950.8491	894+74.09	34.16' Lt.	Back of Sidewalk P.I.
9041	1,683,912.6893	1,651,940.7187	895+29.26	39.17' Lt.	Back of Sidewalk P.I.
9043	1,683,706.5461	1,651,936.0861	893+20.00	55.00' Lt.	Edge of Pavement
9044	1,683,752.8473	1,651,935.2497	893+66.31	55.00' Lt.	Edge of Pavement
9045	1,683,753.0389	1,651,945.2479	893+66.32	45.00' Lt.	Edge of Pavement
9046	1,683,788.0332	1,651,944.6158	894+01.32	45.00' Lt.	Edge of Pavement
9047	1,683,853.4695	1,651,940.9334	894+70.28	44.48' Lt.	Edge of Pavement
9048	1,683,857.2153	1,651,940.8657	894+74.01	44.20' Lt.	Edge of Pavement
9049	1,683,911.2925	1,651,930.8069	895+28.79	49.17' Lt.	Edge of Pavement
9050	1,683,938.4760	1,651,928.1867	895+56.10	49.24' Lt.	Edge of Pavement
9051	1,683,753.1380	1,651,950.4230	893+66.33	39.82' Lt.	Back of Sidewalk P.I.

CURVE DATA													
NO.		R	T	L	E	P.C. COORDINATES		P.I. COORDINATES		P.T. COORDINATES		C.C. COORDINATES	
						NORTH	EAST	NORTH	EAST	NORTH	EAST	NORTH	EAST
C001	03°52'35" Rt.	1000.00	33.84	67.66	0.57	1,684,382.3904	1,651,848.4725	1,684,385.2877	1,651,882.1895	1,684,385.8989	1,651,916.0252	1,683,386.0620	1,651,934.0865
FC001	91°57'18" Rt.	20.50	21.21	32.90	9.00	1,683,708.2801	1,652,019.5615	1,683,729.4606	1,652,018.4122	1,683,729.8867	1,652,039.6195	1,683,709.3909	1,652,040.0314
FC002	88°02'42" Rt.	20.50	19.81	31.50	8.01	1,683,759.8320	1,652,036.5939	1,683,759.4340	1,652,016.7857	1,683,779.2171	1,652,015.7122	1,683,780.3278	1,652,036.1821
FC003	11°03'11" Lt.	1056.00	102.18	203.72	4.93	1,683,707.0886	1,651,955.5845	1,683,808.9593	1,651,963.4686	1,683,910.4518	1,651,951.6759	1,683,788.5724	1,650,902.7329
FC004	02°04'16" Rt.	8998.00	162.66	325.28	1.47	1,683,794.3250	1,652,014.8924	1,683,956.7419	1,652,006.0789	1,684,119.3713	1,652,003.1413	1,684,281.8765	1,660,999.6738
FC005	05°35'34" Rt.	1002.00	48.94	97.81	1.19	1,683,910.4518	1,651,951.6759	1,683,959.0676	1,651,946.0271	1,684,008.0025	1,651,945.1432	1,684,026.0988	1,652,946.9798
FC006	85°35'31" Lt.	20.50	18.98	30.62	7.44	1,683,929.9604	1,651,949.6025	1,683,948.8534	1,651,947.7814	1,683,948.4897	1,651,928.8044	1,683,927.9935	1,651,929.1971
FC007	89°56'14" Lt.	20.50	20.48	32.18	8.48	1,683,988.4245	1,651,925.0159	1,683,988.8167	1,651,945.4898	1,684,009.2910	1,651,945.1200	1,684,008.9207	1,651,924.6233
FC008	90°28'12" Lt.	30.00	30.25	47.37	12.60	1,684,326.2796	1,651,939.3942	1,684,356.5218	1,651,938.8479	1,684,355.7274	1,651,908.6111	1,684,325.7378	1,651,909.3990
FC009	90°00'00" Rt.	28.50	28.50	44.77	11.81	1,684,339.3928	1,651,999.1671	1,684,367.8882	1,651,998.6524	1,684,368.4029	1,652,027.1477	1,684,339.9075	1,652,027.6624
FC010	90°00'00" Rt.	28.50	28.50	44.77	11.81	1,684,408.3964	1,652,026.4253	1,684,407.8817	1,651,997.9300	1,684,436.3770	1,651,997.4152	1,684,436.8917	1,652,025.9106
FC011	89°34'59" Lt.	30.00	29.78	46.91	12.27	1,684,415.7314	1,651,907.9918	1,684,416.4859	1,651,937.7647	1,684,446.2636	1,651,937.2269	1,684,445.7218	1,651,907.2318
FC012	03°24'23" Rt.	970.00	28.84	57.67	0.43	1,684,352.5005	1,651,851.0409	1,684,354.9699	1,651,879.7781	1,684,355.7274	1,651,908.6111	1,683,386.0620	1,651,934.0865
FC013	03°27'35" Rt.	1030.00	31.11	62.19	0.47	1,684,412.2803	1,651,845.9041	1,684,414.9434	1,651,876.8958	1,684,415.7314	1,651,907.9918	1,683,386.0620	1,651,934.0865
FC014	01°11'52" Rt.	998.00	10.43	20.86	0.05	1,684,534.9082	1,651,995.6355	1,684,545.3384	1,651,995.4471	1,684,555.7702	1,651,995.4767	1,684,552.9322	1,652,993.4727
FC015	04°23'14" Rt.	1002.00	38.38	76.72	0.73	1,684,505.9774	1,651,936.1483	1,684,544.3522	1,651,935.4551	1,684,582.6677	1,651,937.6995	1,684,524.0737	1,652,937.9848
FC016	01°11'47" Lt.	1002.00	10.46	20.92	0.05	1,684,749.9215	1,651,996.0288	1,684,760.3840	1,651,996.0586	1,684,770.8447	1,651,995.8699	1,684,752.7709	1,650,994.0329
FC017	04°23'09" Lt.	398.00	15.24	30.47	0.29	1,684,744.4010	1,651,947.1734	1,684,759.6156	1,651,948.0646	1,684,774.8538	1,651,947.7897	1,684,767.6748	1,651,549.8545
SW001	90°33'38" Lt.	21.00	21.21	33.19	8.84	1,684,327.5763	1,651,928.8690	1,684,348.7793	1,651,928.4860	1,684,348.1889	1,651,907.2877	1,684,327.1970	1,651,907.8724
SW002	89°30'05" Lt.	21.00	20.82	32.80	8.57	1,684,423.1904	1,651,906.3213	1,684,423.7476	1,651,927.1319	1,684,444.5622	1,651,926.7559	1,684,444.1829	1,651,905.7593
SW003	05°59'52" Rt.	1012.50	53.04	105.99	1.39	1,684,505.7877	1,651,925.6500	1,684,558.8214	1,651,924.6920	1,684,611.6650	1,651,929.2807	1,684,524.0736	1,652,937.9848
SW004	05°59'52" Lt.	391.50	20.51	40.98	0.54	1,684,733.8012	1,651,939.8865	1,684,754.2341	1,651,941.6608	1,684,774.7404	1,651,941.2904	1,684,767.6699	1,651,549.8542

CONTROL POINTS					
POINT NO.	NORTH COORDINATE	EAST COORDINATE	STATION	OFFSET	DESCRIPTION
305	1,683,775.5400	1,652,023.5500	893+87.40	33.69' Rt.	Mag Nail
306	1,684,038.9300	1,652,011.1600	896+51.37	36.57' Rt.	Chiseled "u"
405	1,684,810.6700	1,651,941.1500	904+24.51	30.00' Lt.	3/4" Iron Pipe with Thimble
406	1,684,835.6800	1,651,940.7300	904+49.52	29.96' Lt.	Chiseled "v"
407	1,684,945.6900	1,651,938.7100	905+59.54	29.99' Lt.	Chiseled "v"
409	1,684,424.1000	1,651,978.2700	900+37.08	10.63' Rt.	3/4" Thimble
411	1,684,064.5500	1,651,954.6100	896+78.01	19.51' Lt.	1/2" Iron Pipe
412	1,683,062.7640	1,651,972.7189	886+75.66	30.00' Lt.	SE Corner SW 1/4 Sec 21, T. 27S, R. 1E
413	1,683,974.5500	1,652,016.4100	895+86.90	40.65' Rt.	#4 Bar with PEC Cap
414	1,684,174.5600	1,652,012.7100	897+86.95	40.57' Rt.	#4 Bar with Baughman Cap
6704	1,684,425.8200	1,652,002.3200	900+38.35	34.72' Rt.	BM #1C, Chiseled "u"
6774	1,684,899.3100	1,651,933.2000	905+13.27	36.34' Lt.	BM #23, Chiseled "u"
7035	1,684,674.6000	1,652,003.7700	902+88.90	34.32' Rt.	1/2" Iron Pipe



Plotted By: ak1
 Date: 12/29/2008 2:33:44 PM
 File: I:\2005\05493-8\Geometry\05493-008-CoordGeo.dgn

No.	Revision	By	Date
WASHINGTON STREET			
COORDINATE GEOMETRY			
STA. 893+00 TO STA. 905+00			
JAMES L. ARMOUR, P.E.—CITY ENGINEER CITY OF WICHITA PROJECT NO. 472-84657			
Professional Engineering Consultants, P.A.			
303 S. TOPEKA • WICHITA, KANSAS 67202 316-262-2691 • FAX 316-262-3003			
Designed by	MJW	Job No.	05493-8
Drawn by	DRP	Date	Dec., 2008
			Sht. R7 of R73