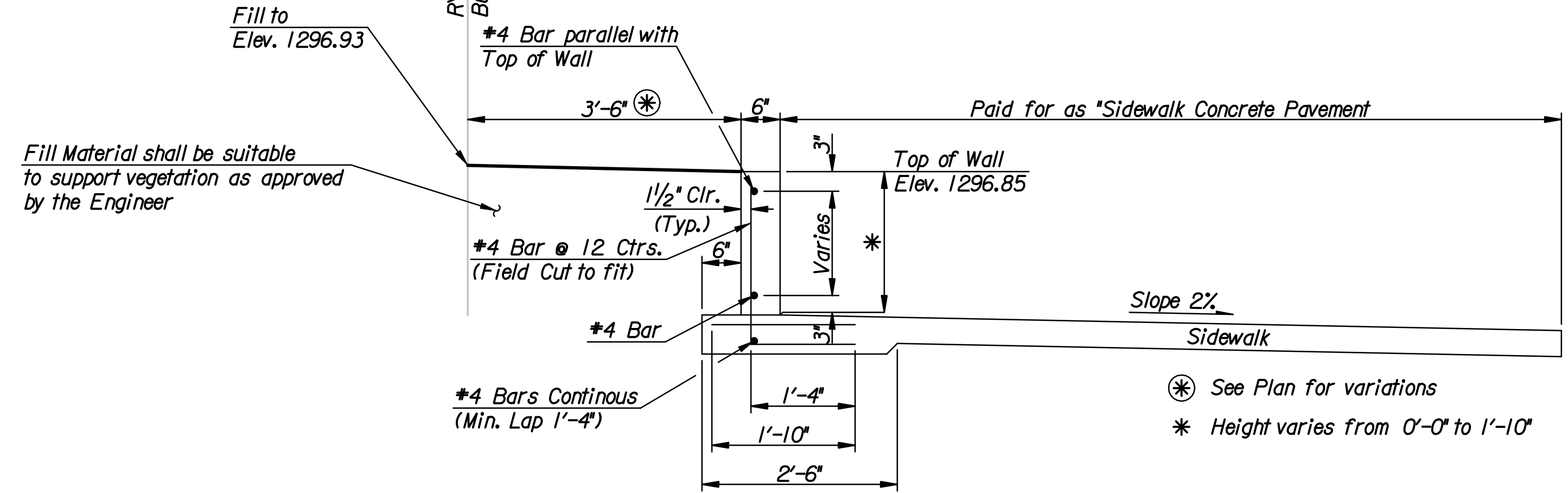
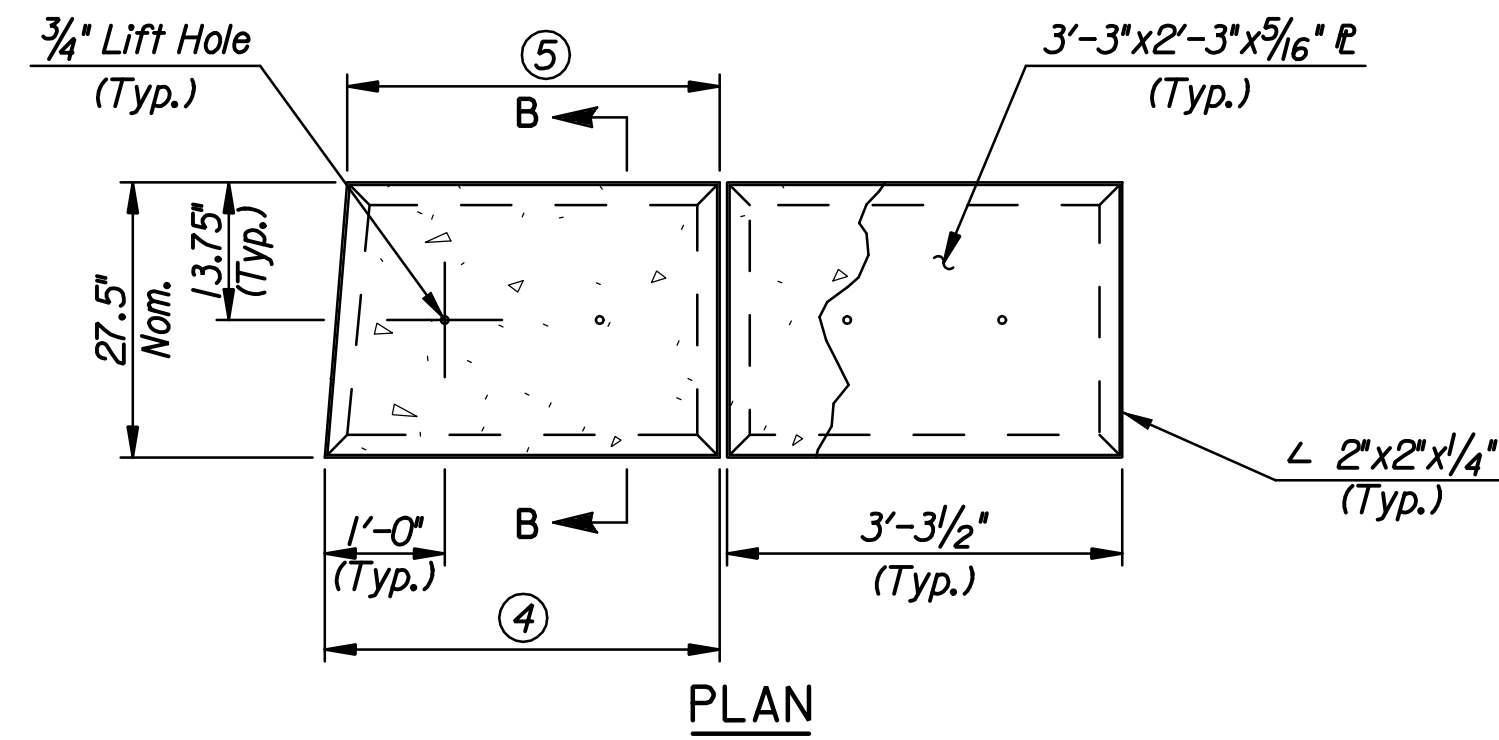


* Propex Fibermesh 150 @ 1.5 lbs./C.Y. or equivalent as approved by the Engineer.



RETAINING WALL DETAIL

Washington St. Sta. 898+57.50 to Sta. 899+48.14
 Waterman St. Sta. 132+66.50 to Sta. 133+68.37

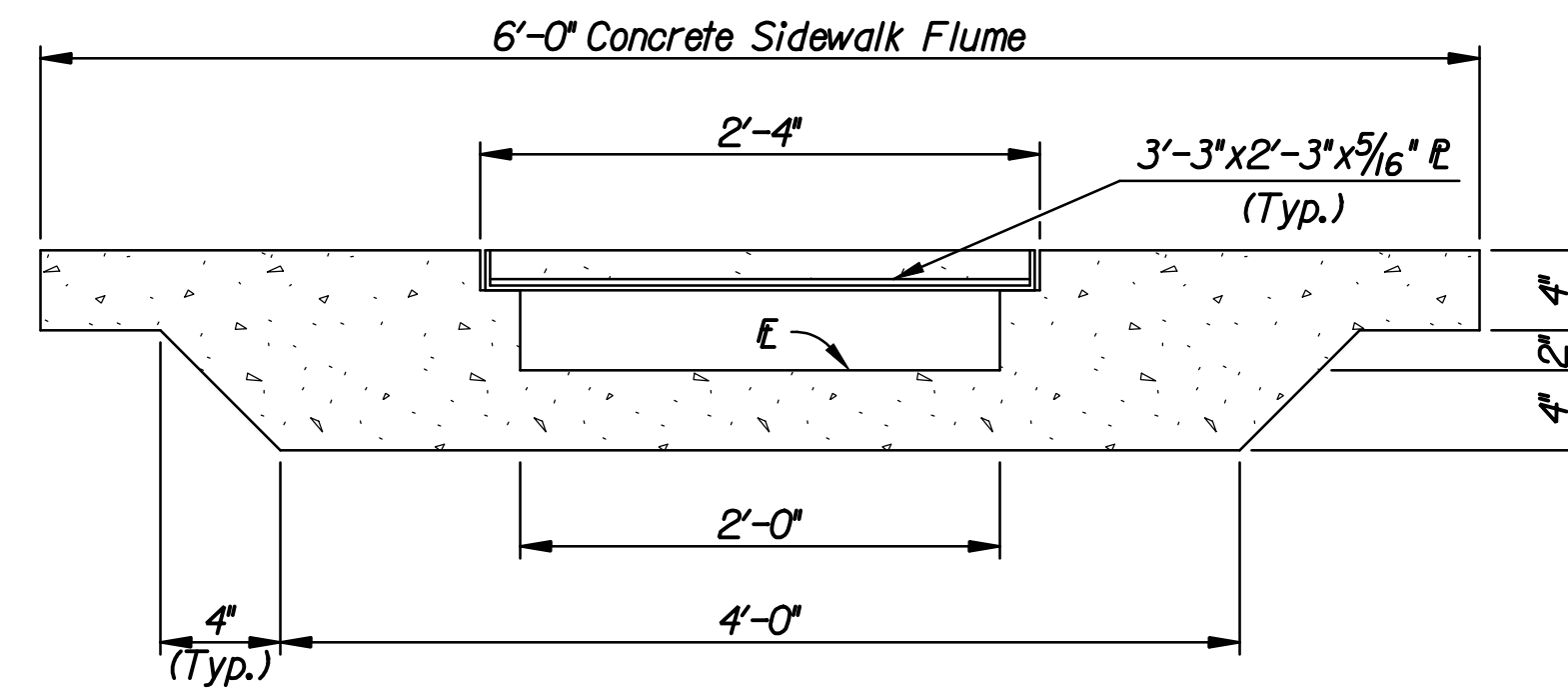
GENERAL NOTES

CONCRETE: Class AAA Concrete (AE) shall be used throughout. Bevel all exposed edges with a $\frac{3}{4}"$ triangular moulding. Exposed surfaces shall be given a rubbed finish.

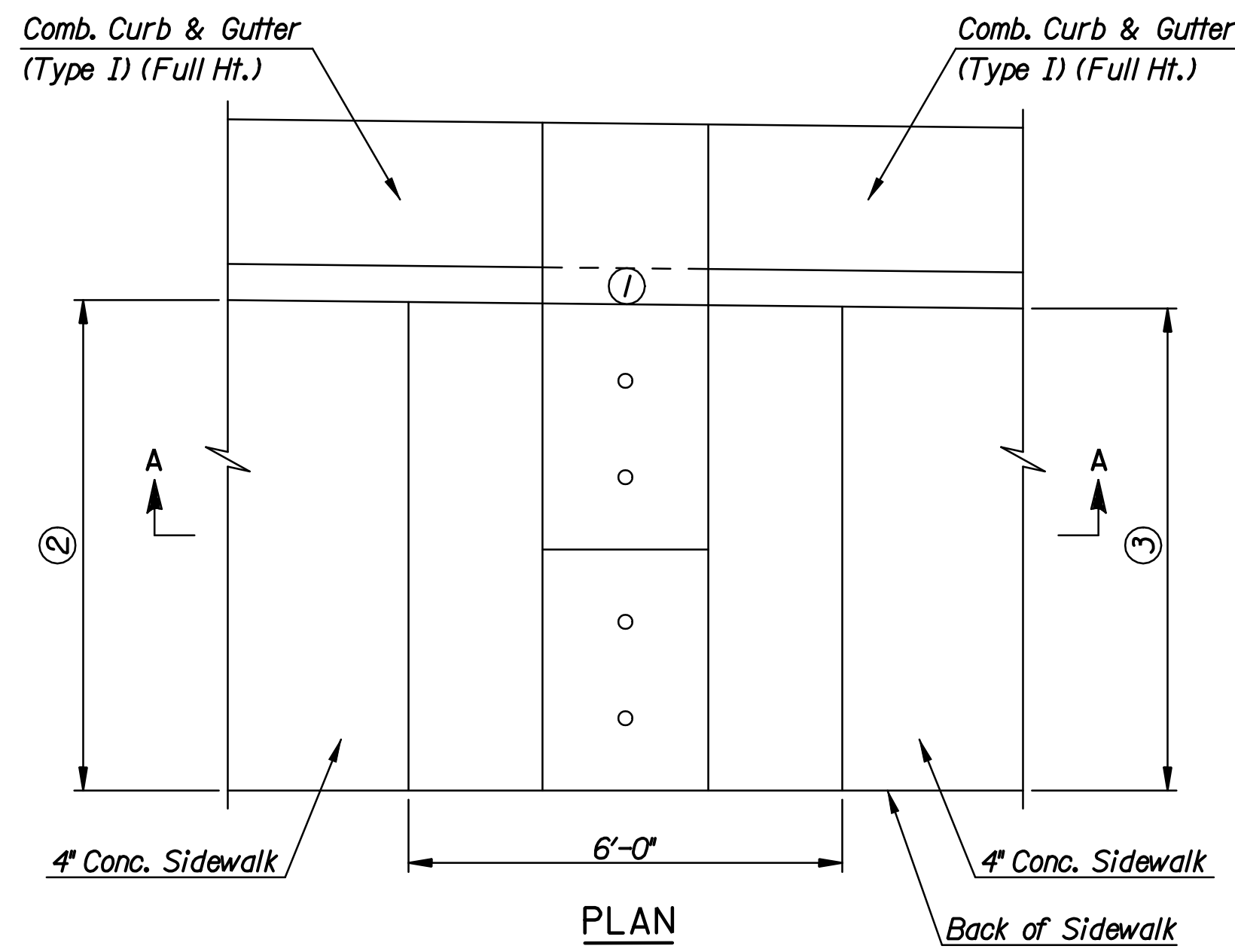
REINFORCING: All reinforcing shall conform to A.S.T.M. A615, Grade 60. All dimensions relative to reinforcing steel shall be to centerline of bars unless otherwise noted. Bar clearances shall be $\frac{1}{2}"$ unless otherwise noted.

Retaining Walls shall be paid for at the contract unit price bid per Lined Foot as measured along the exposed face of wall. This payment shall be considered full compensation for all excavation, backfilling, materials, labor, equipment, tools, and incidentals necessary to complete the work.

Contraction and Expansion Joints in Wall shall match the joints in the sidewalk. Expansion Joints to be spaced at 90' maximum. Reinforcing steel in Retaining Wall to run continuous thru Contraction Joints.



SECTION A-A



CONCRETE SIDEWALK FLUME DETAIL
 Sta. 903+09.50 and Sta. 903+53.00

- ① No Curb Thru Sidewalk Flume Opening. Retain E of Gutter. Paid for as Combined Curb & Gutter (Type I).
- ② 6.90' at Sta. 903+09.50
6.01' at Sta. 903+53.00
- ③ 6.77' at Sta. 903+09.50
5.89' at Sta. 903+53.00
- ④ 3.53' at Sta. 903+09.50
2.62' at Sta. 903+53.00
- ⑤ 3.48' at Sta. 903+09.50
2.57' at Sta. 903+53.00

Note:
 All material, equipment and labor necessary to construct Concrete Sidewalk Flume shall not be paid for directly, but shall be considered Subsidiary to the bid item cost for "Concrete Sidewalk Pavement".

No.	Revision	By	Date
WASHINGTON STREET			
MISCELLANEOUS DETAILS			
JAMES L. ARMOUR, P.E.—CITY ENGINEER CITY OF WICHITA PROJECT NO. 472-84657			
Professional Engineering Consultants, P.A. 303 S. TOPEKA • WICHITA, KANSAS 67202 316-262-2691 • FAX 316-262-3003			
Designed by	MJW	Job No.	05493-8
Drawn by	DRP	Date	Dec., 2008
			Sht. R19 of R73