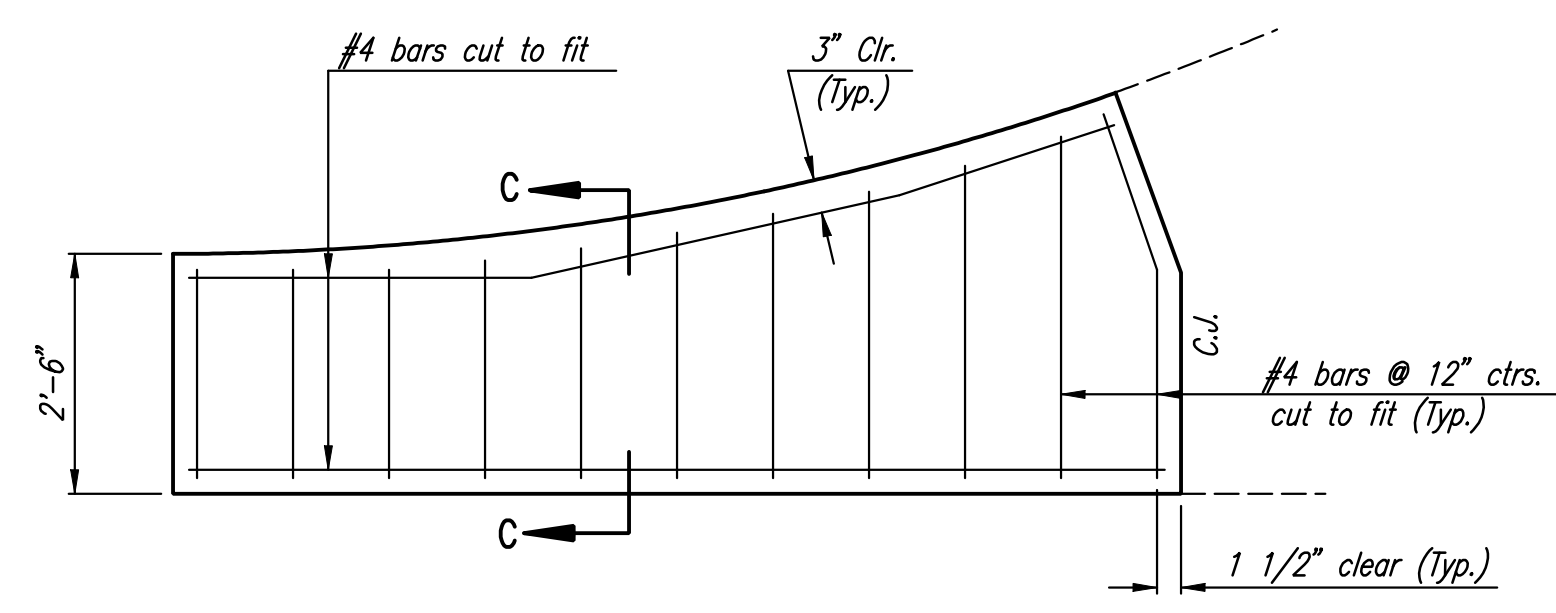
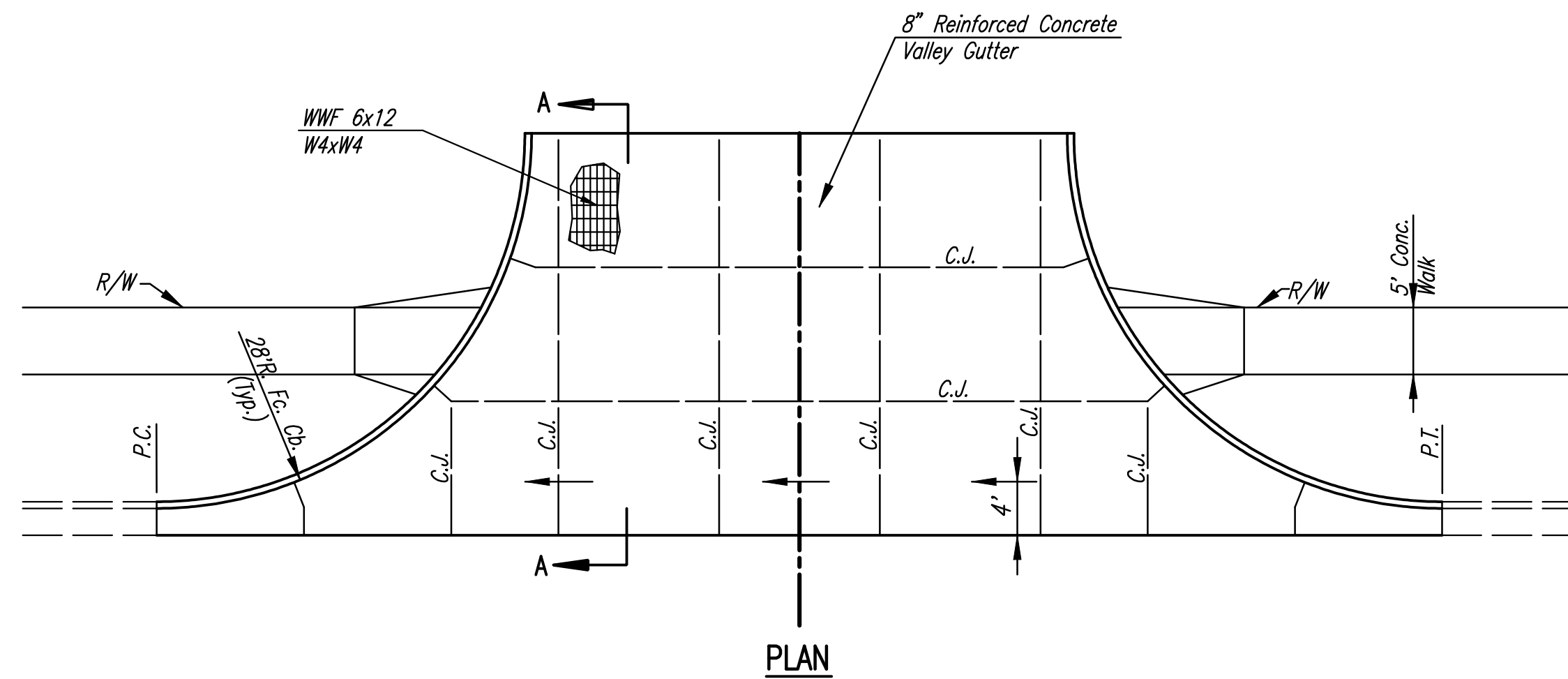
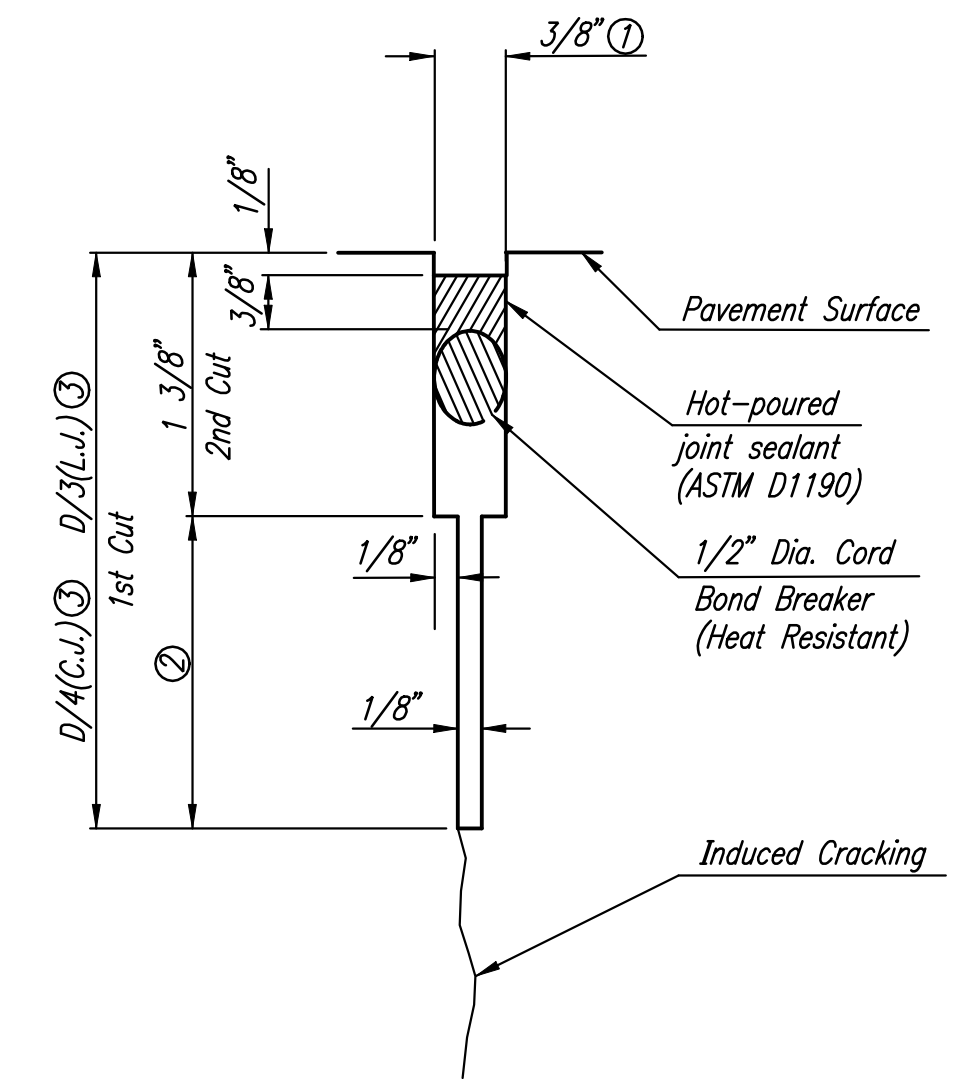


DSNR: OPER: DRP SCALE: I:/2005/05493-8/STANDARDS/05493-8-VALGUTDLDGN 2-7-2008 LAST REV: BY:

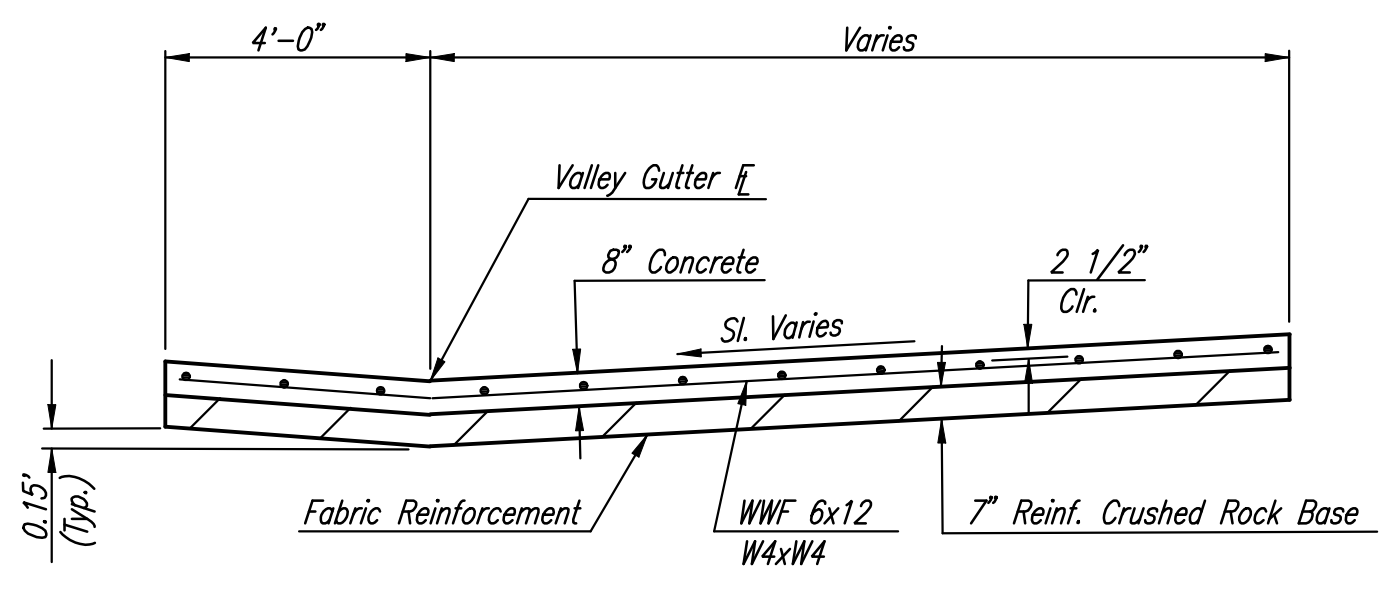


WING REINFORCING DETAIL
NOTE: OMIT WIRE FABRIC REINFORCING IN THIS SECTION.



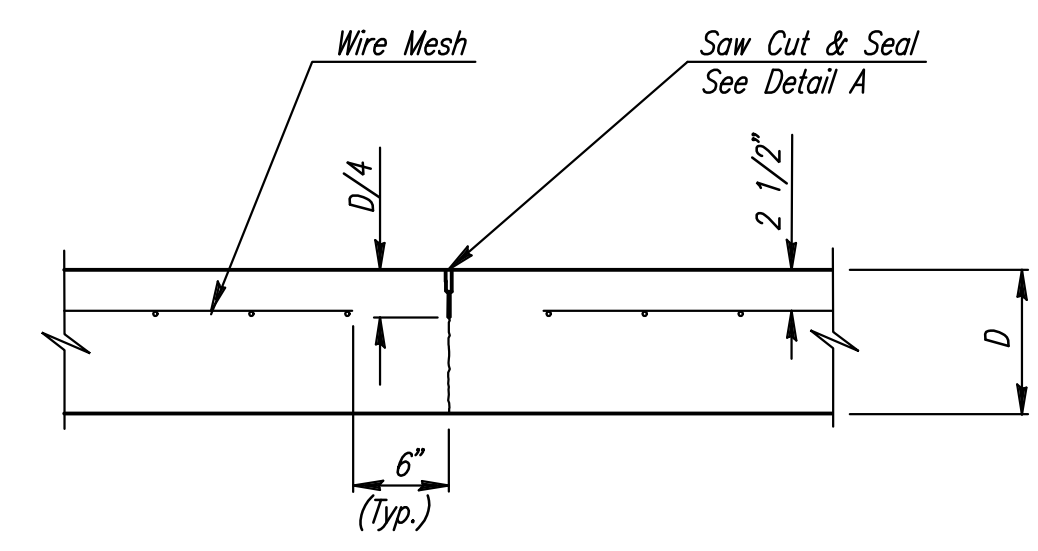
DETAIL A

- ① To be accomplished in 2 cuts for Longitudinal Joints and Contraction Joints. Initial cut to be 1/8" wide.
- ② Eliminate bottom of cut when metal keyway is used as part of Longitudinal or Transverse Construction Joint and at Doweled Construction Joint Locations.
- ③ 1 1/2" Minimum

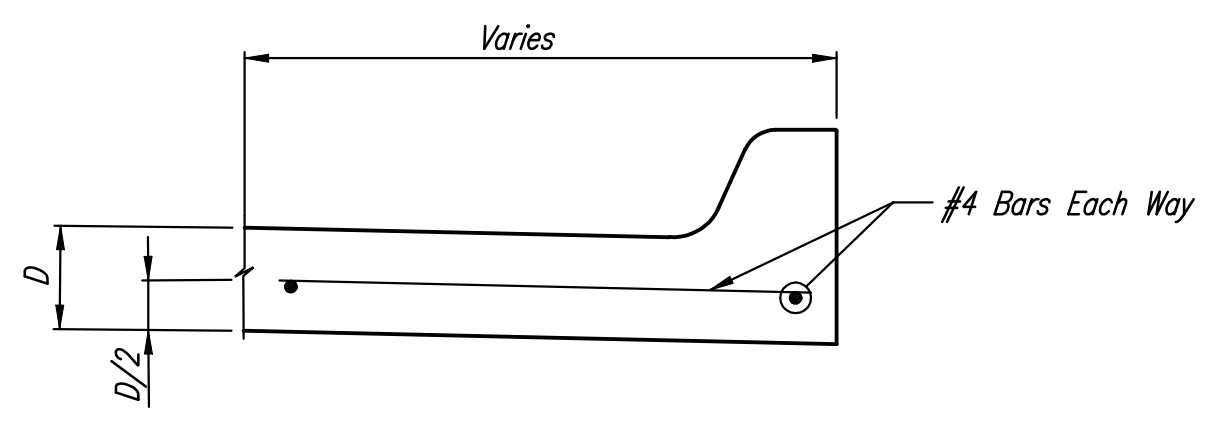


SECTION A-A

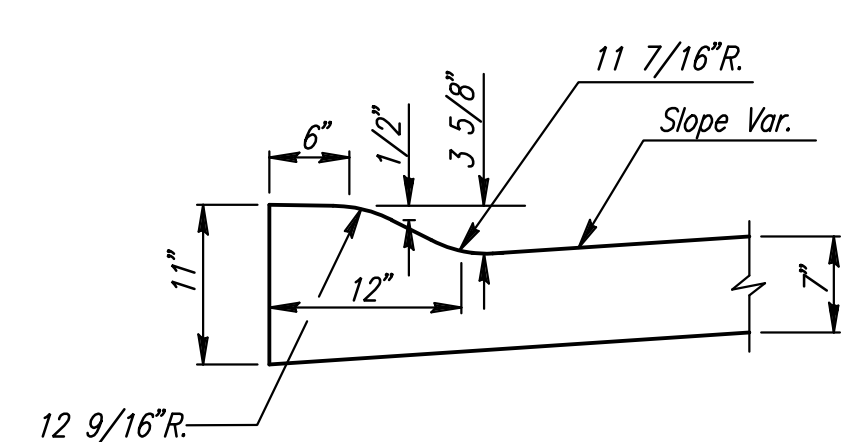
NOTE: OMIT REINFORCING MESH AT ALL JOINTS
NOTE: ALL CONCRETE VALLEY GUTTER REINFORCEMENT SHALL BE ADEQUATELY SUPPORTED BY BAR CHAIRS IN THE REQUIRED POSITION UNLESS APPROVED OTHERWISE BY THE ENGINEER.



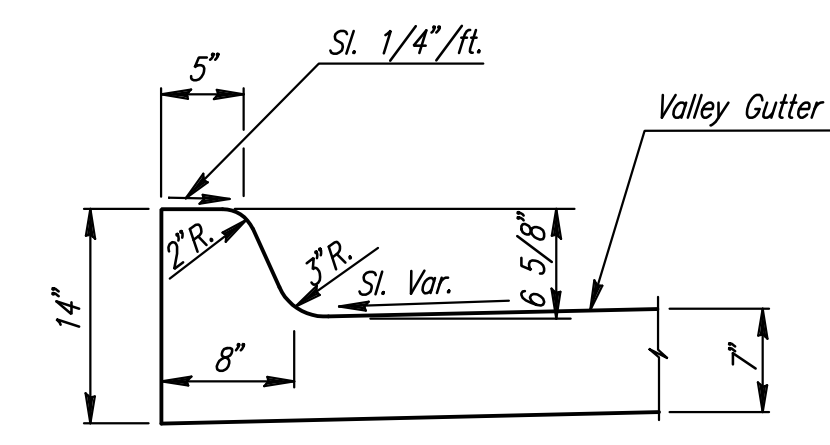
**CONTRACTION JOINT DETAIL
REINFORCED PAVEMENT
(C.J.)**



SECTION C-C



**DETAIL B
(ROLL-TYPE CURB)(3 5/8")**



**DETAIL C
(STANDARD CURB)(6 5/8")**

MONOLITHIC EDGE CURB

No.	Revision	By	Date
WASHINGTON STREET VALLEY GUTTER DETAILS JAMES L. ARMOUR, P.E.—CITY ENGINEER CITY OF WICHITA PROJECT NO. 472-84657 Professional Engineering Consultants, P.A. 303 S. TOPEKA • WICHITA, KANSAS 67202 316-262-2691 • FAX 316-262-3003			
Designed by	Job No. 05493-008	Sht. R22 of R73	
Drawn by	Date March, 2008		