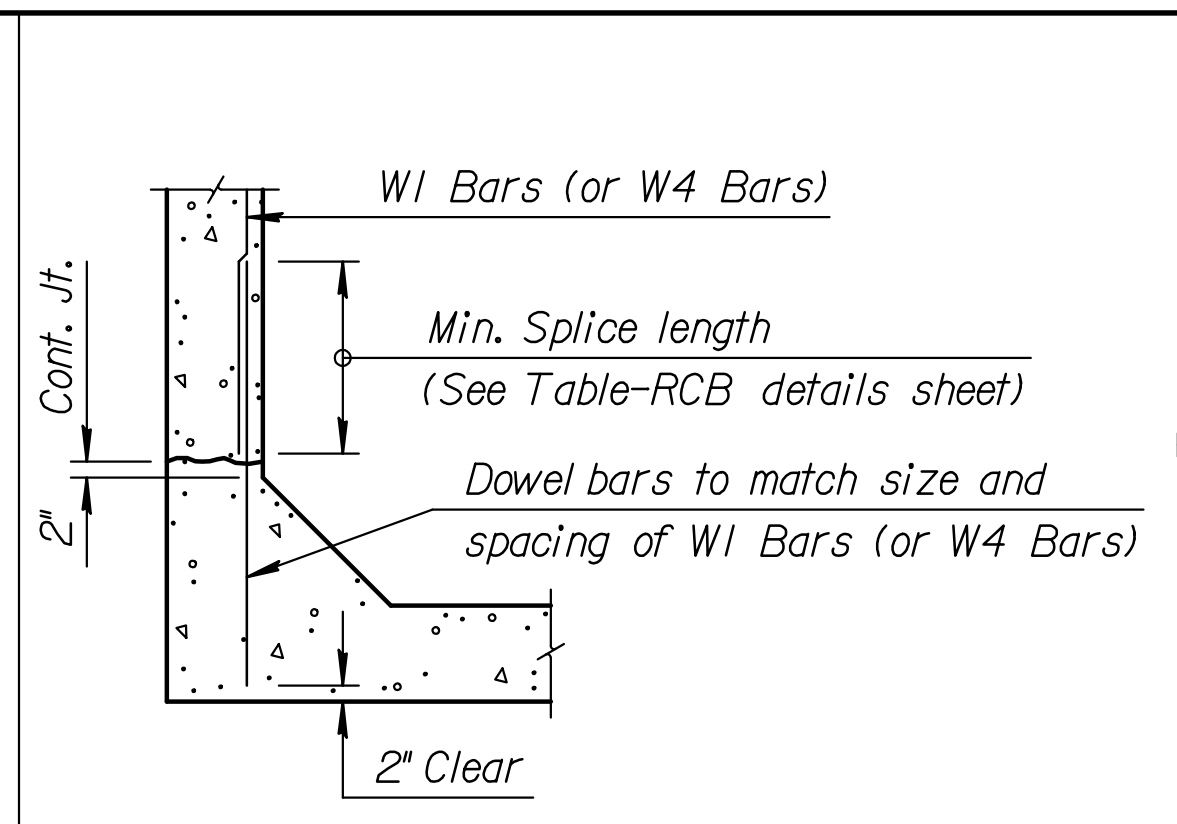
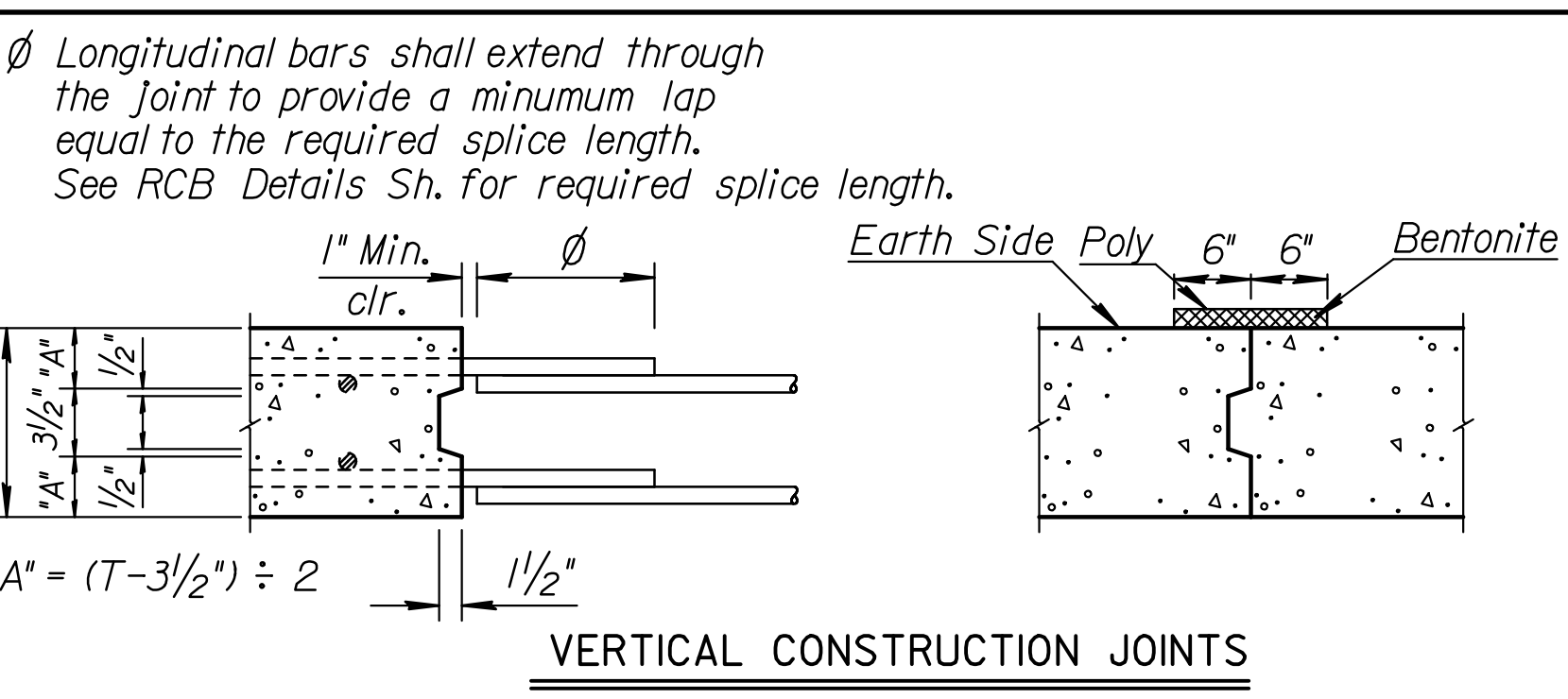


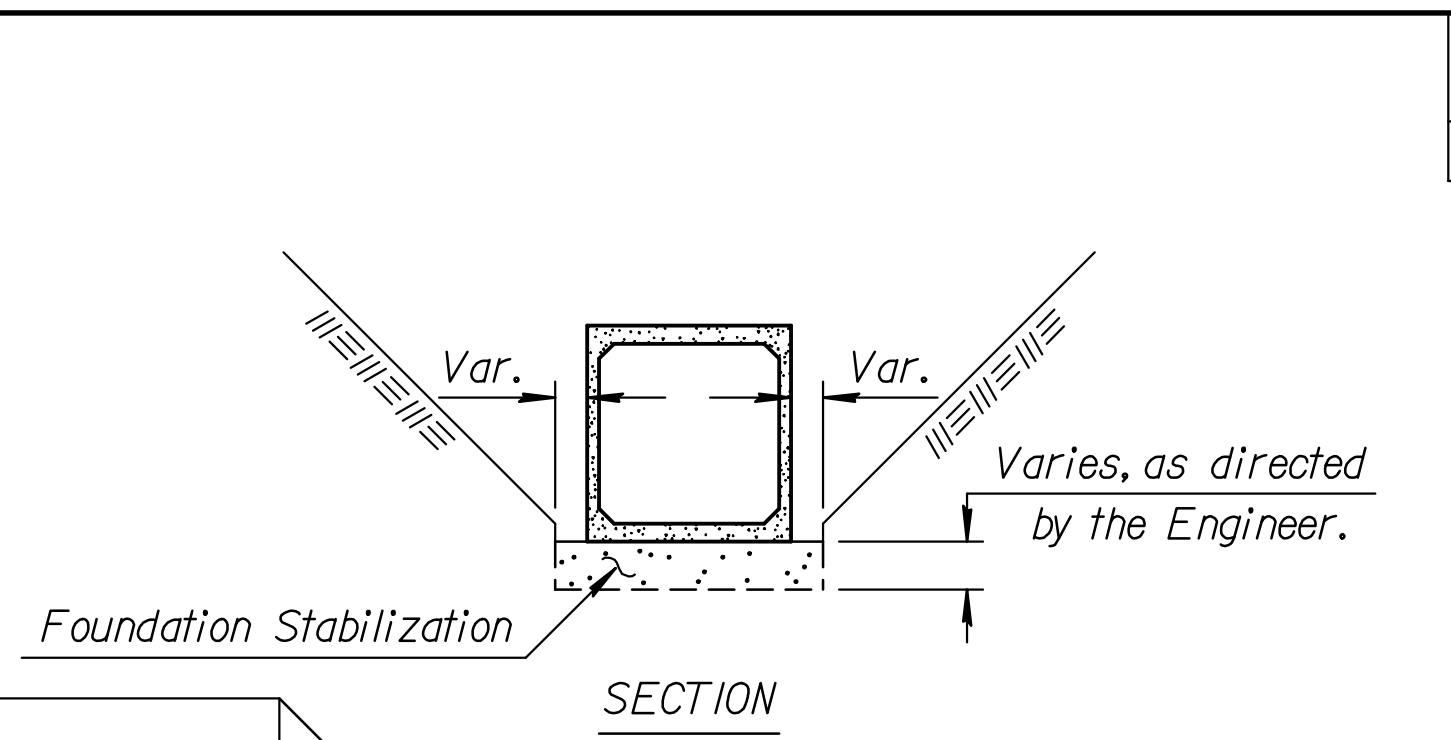
SECTION THRU WINGWALL



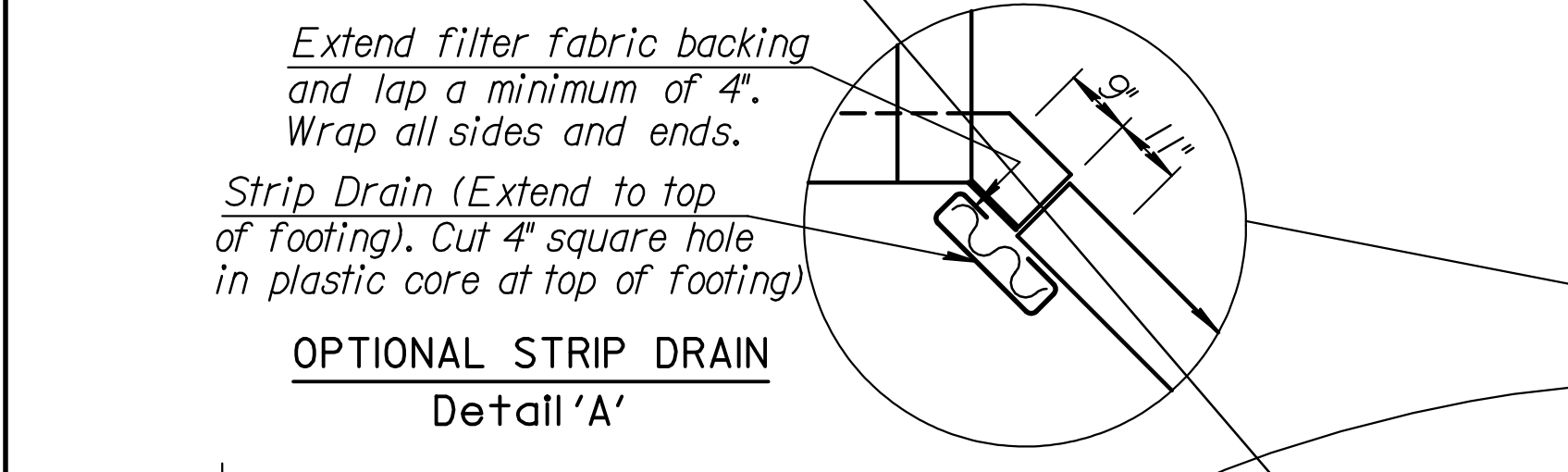
OPTIONAL BAR DETAIL



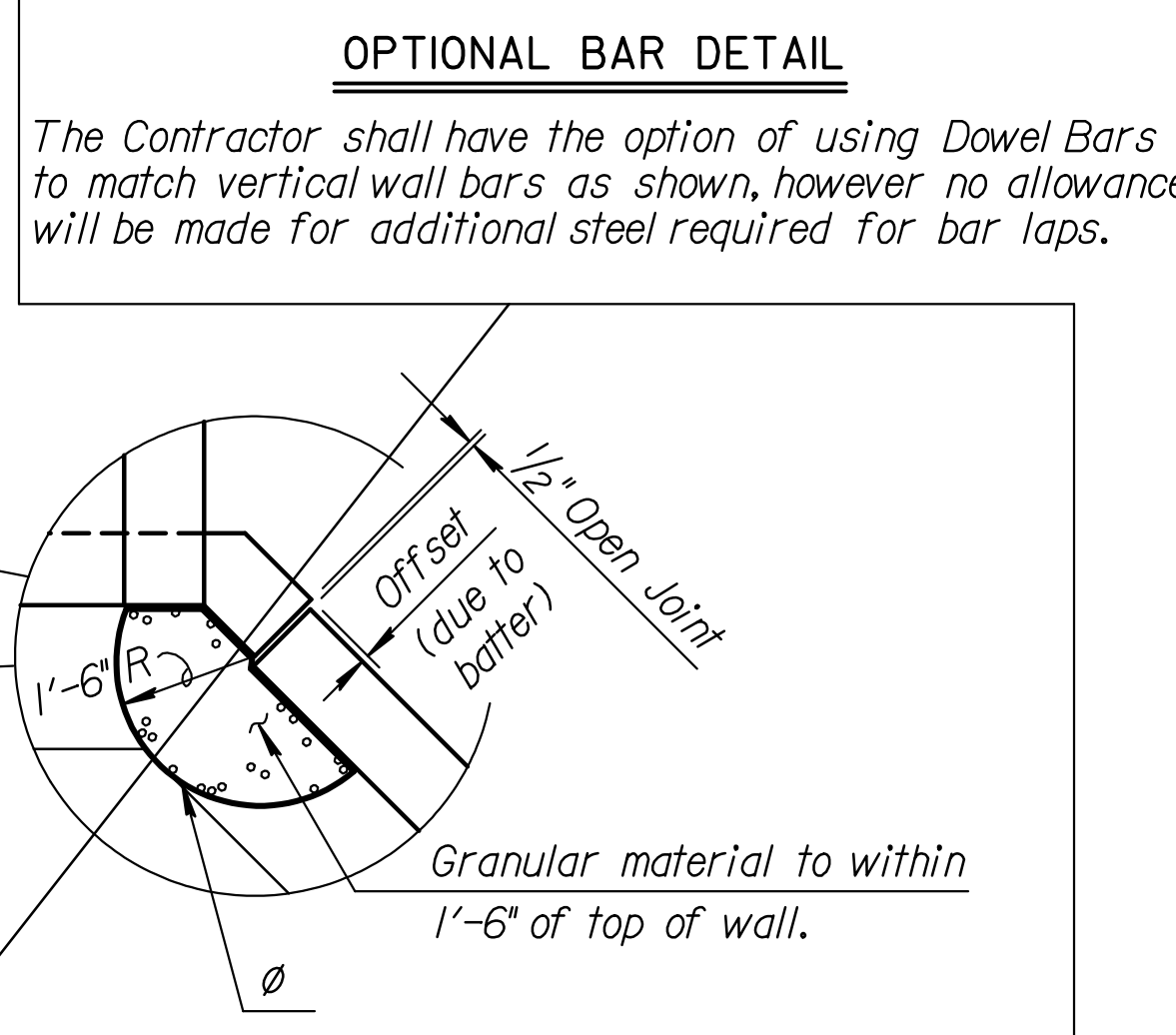
VERTICAL CONSTRUCTION JOINTS



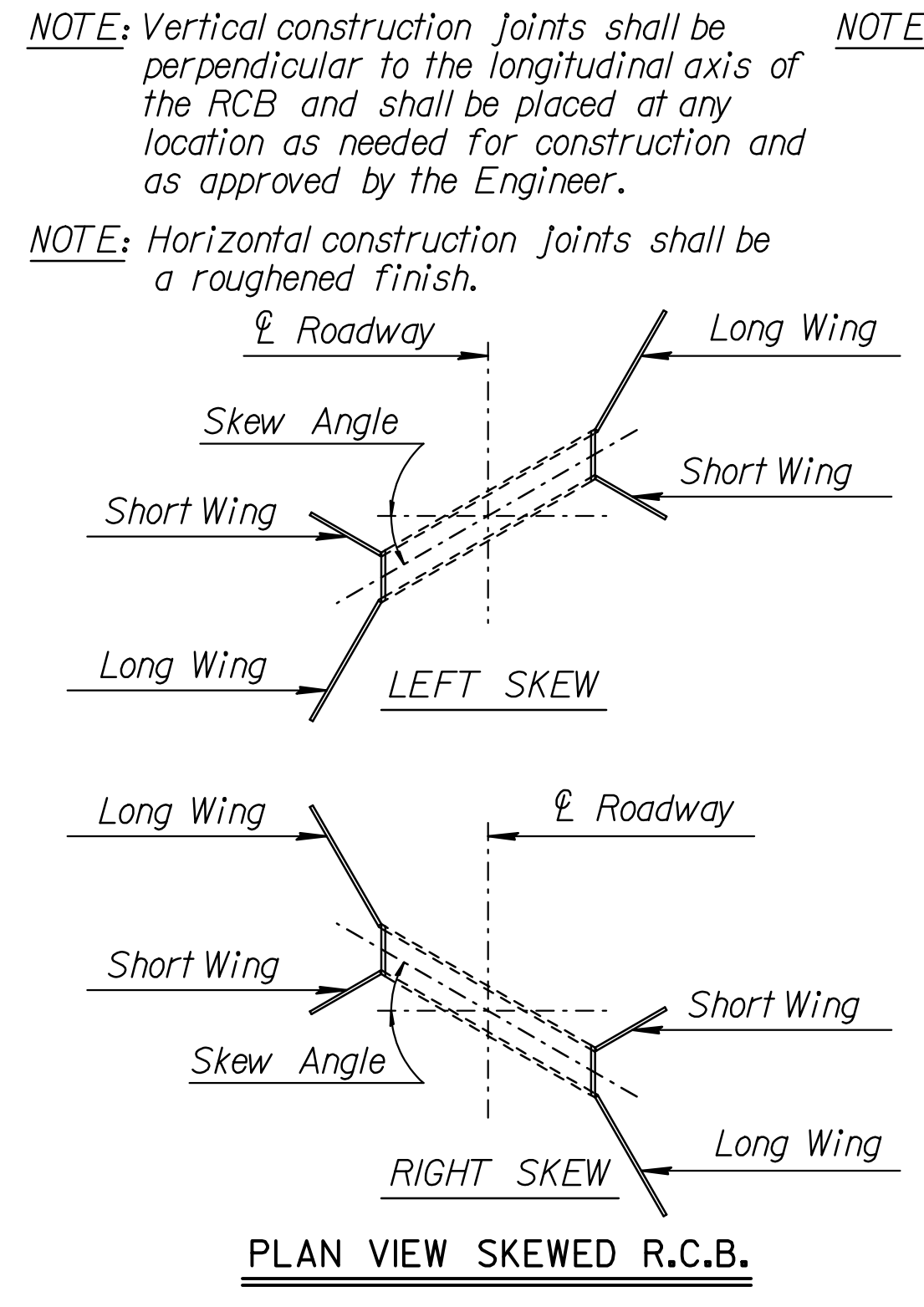
SECTION



OPTIONAL STRIP DRAIN Detail 'A'



VERTICAL WINGWALL DRAINAGE FOR FREE-STANDING WINGWALLS ONLY

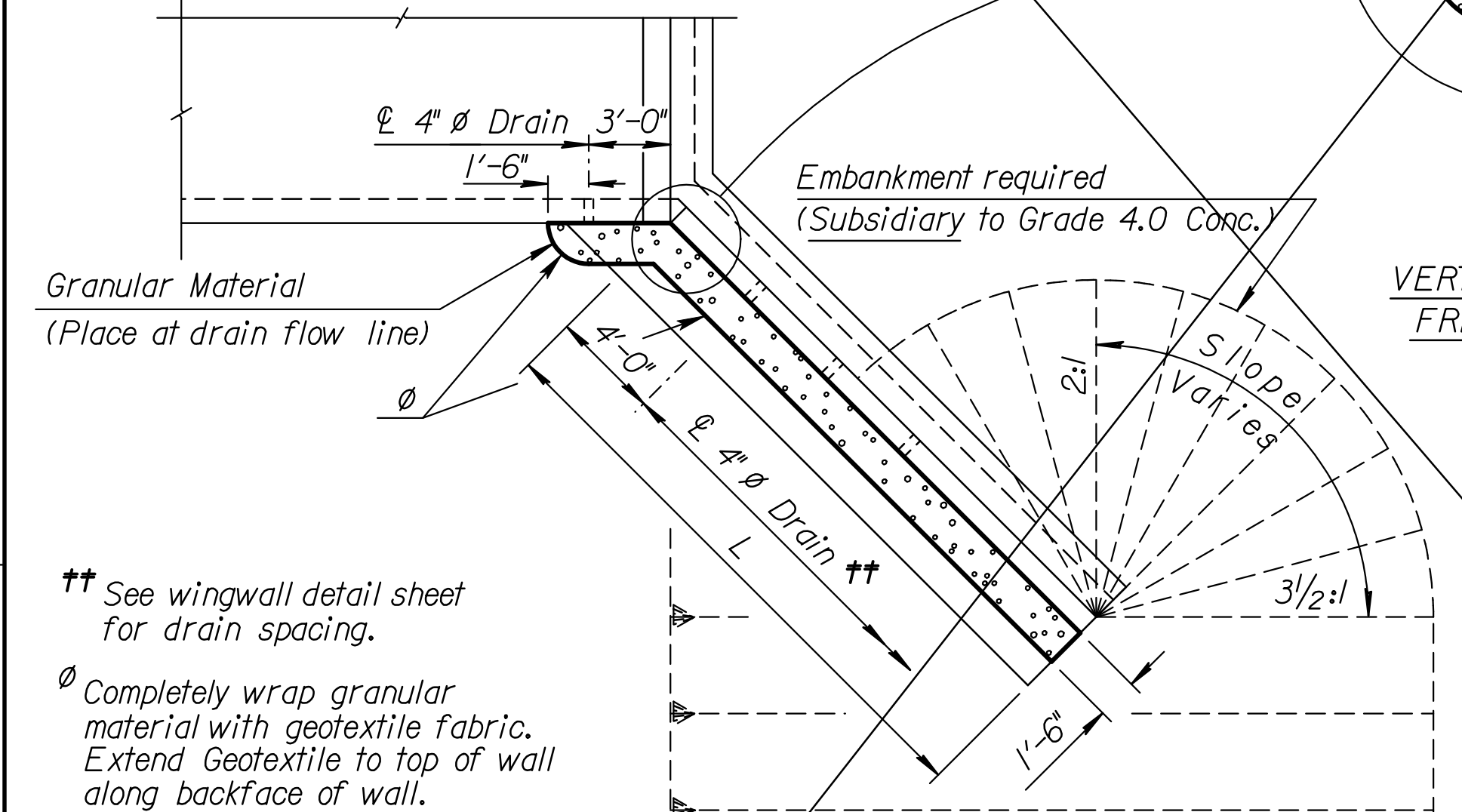


PLAN VIEW SKEWED R.C.B.

GENERAL NOTES

Foundation Stabilization: Overexcavate and backfill with granular material. Compact in 8" lifts meeting Type B Compaction requirements.

GENERAL NOTES



WINGWALL PLAN

GENERAL NOTES

Wingwall Drainage:

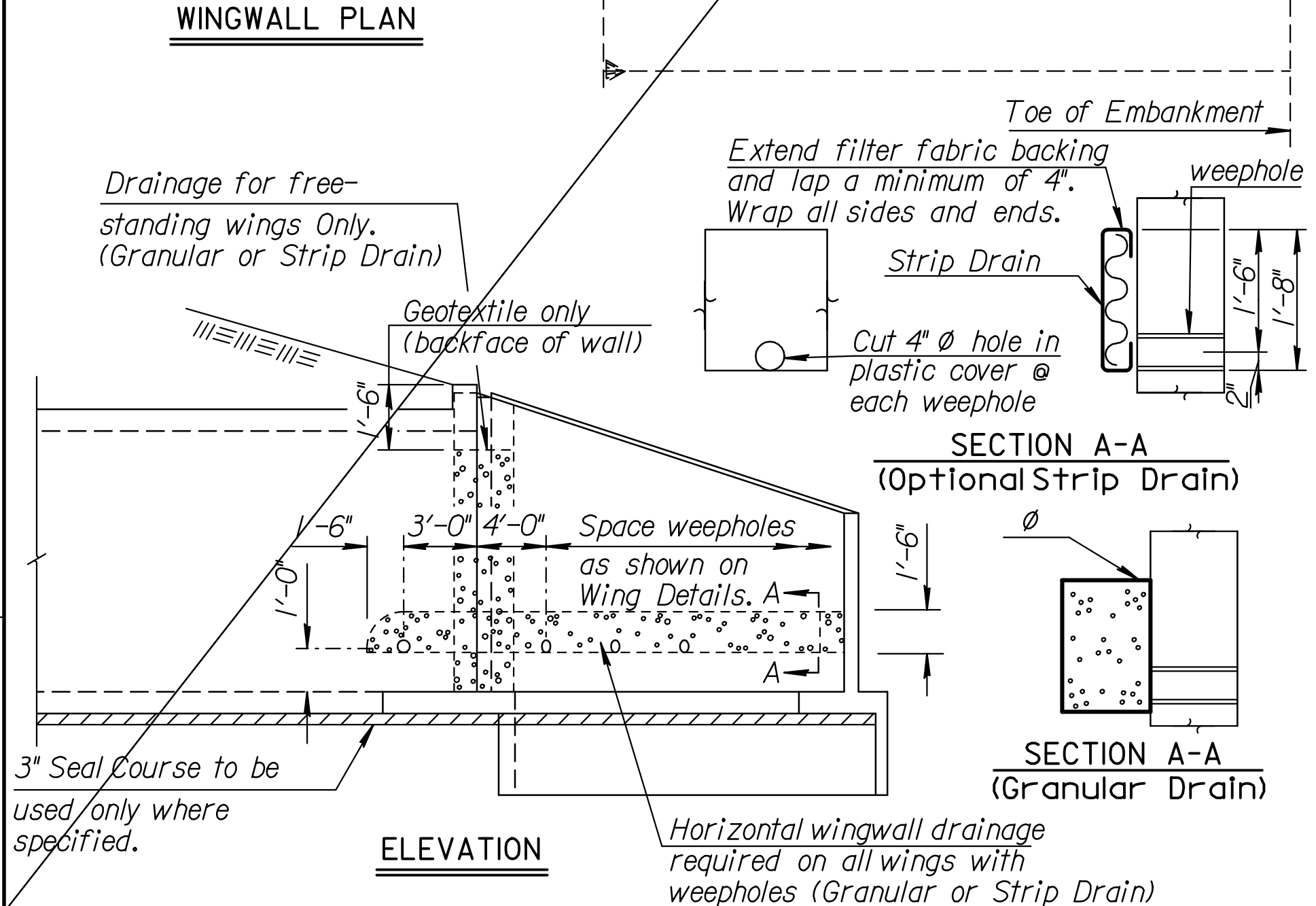
- All wingwalls with weepholes shall have horizontal wingwall drainage as shown. Free-standing wingwalls shall also have the vertical wingwall drainage. Strip drains may be used in lieu of aggregate. See KDOT Specifications for "Abutment Strip Drains" for strip drain requirements.
- Construction and materials for wingwall drainage, including weepholes, geotextile fabric, granular material, and strip drain shall be subsidiary to the bid item, "Grade 4.0 Concrete". Granular material for wingwall drainage shall conform to the requirements of UD-1. Weepholes may be a formed opening or corrugated polyethylene tubing.

Wingwall Subbase:

- Wingwall subbase shall be constructed at all wingwall footings to assure the assumed coefficient of friction between the concrete footing and the foundation, with the following exceptions:
 - Wingwall subbase will not be required for footings on RCB's 6 feet or less in height unless otherwise determined by the Engineer.
 - The subbase will also not be required for footings founded on rock or clean, granular material as determined by the Engineer.
- Subbase shall consist of 4" compacted granular material consisting of commercial grade clean sand or UD-1 material. All excavation, material and labor necessary to construct the wingwall subbase shall be subsidiary to "Grade 4.0 Concrete".

Seal Course:

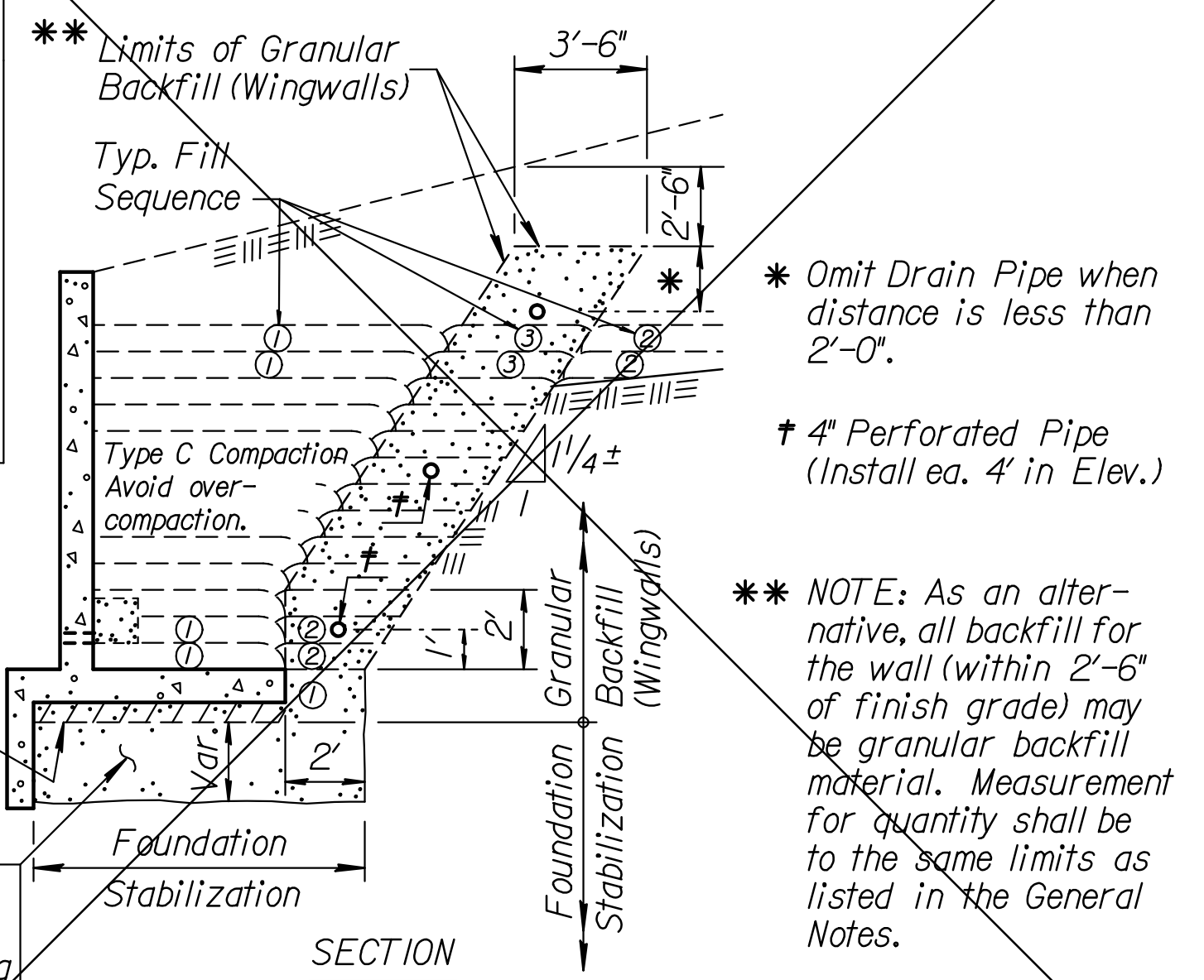
- Seal Course consisting of 3" min. of Commercial Grade Concrete shall be constructed to the limits directed by the Engineer. No reinforcing in the floor of the slab or wall footing shall be placed until the Seal Course has gained sufficient strength to permit working upon it without injury.



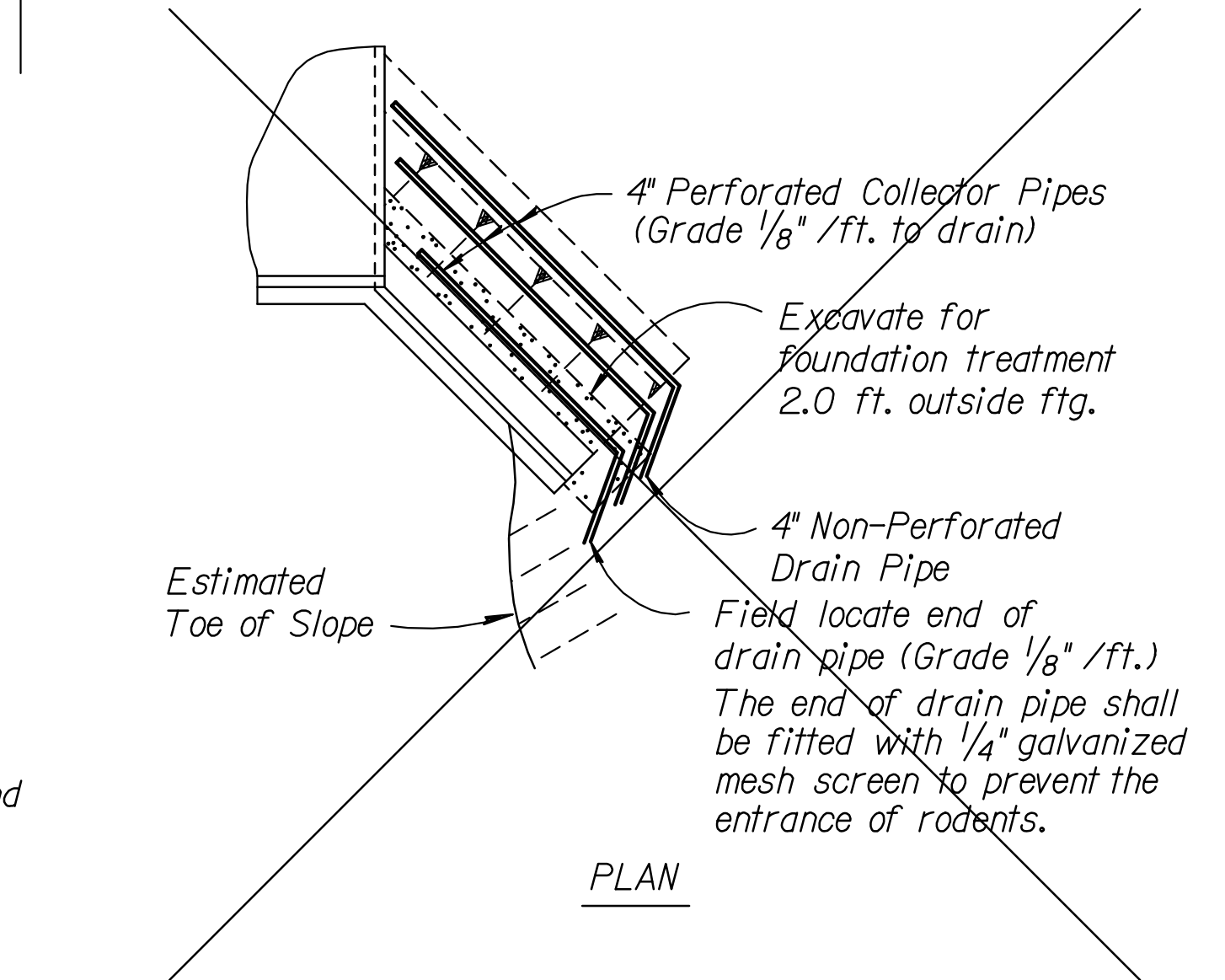
SECTION A-A (Optional Strip Drain)

SECTION A-A (Granular Drain)

ELEVATION



SECTION



GRANULAR BACKFILL AND FOUNDATION STABILIZATION

NO.	DATE	REVISIONS	BY	APP'D
6	10/19/04	Concrete - Class to Grade	RAM	KFH
5	12/29/03	Geotextile to top of wall	RAM	KFH
4	5/15/02	Removed Wing Height Stipulation	RAM	KFH
3	3-28-97	Wrap granular drains	RAM	KFH
2	9-20-96	Strip drain & bentonite at joint	RAM	KFH

KANSAS DEPARTMENT OF TRANSPORTATION			
RCB AUXILIARY DETAILS			
BRO20			
DESIGNED	RAM	DETAILS	RRR
QUANTITIES	TRACED	DESIGN CK.	RRR
DETAIL CK.	RRR	QUAN. CK.	RRR
APP'D	KENNETH F. HURST	TRACED	CK.

Std. Base File: br020.dgn
 Plotted By: drp
 File: i:\2005\05493-8\Standards\05493-08-br020V1.dgn
 Plot Date: 2/20/2007