

N-1,684,387.2002, E-1,651,798.6165  
 @ Waterman St., Sta. 132+55.02 9.1' Lt.=  
 Existing Sanitary Sewer Manhole  
 Existing Top of Manhole Elev.= 1296.4  
 Prop. MH Top Elev. = 1296.2  
 Difference = -0.2'  
 Replace MH Lid and Adjust MH Top Elevation.

@ Waterman St.,  
 P.T. Sta. 133+71.94  
 Adjust MH top  
 See sheet no. W16

Existing Manhole  
 To be removed.  
 See sheet no. W16.

@ Waterman St., Sta. 134+24.22 =  
 @ Washington St., Sta. 900+00.00

Existing Manhole  
 To be removed.  
 See sheet no. W16.

N-1,684,418.1833, E-1,651,998.1908  
 @ Waterman St., Sta. 134+54.67, 30.8' Lt.=  
 Adjust Existing Water Valve (C.O.W. #1852)  
 Existing Top of Box Elev.= 1294.4  
 Proposed Top of Box Elev.= 1294.5  
 Difference = +0.1'

Plug Existing 12" x 8" Tee (S)  
 and Remove Existing 8" Pipe (S)

N: 1,684,413.2449, E: 1,652,023.1673  
 Waterman St., Sta. 134+79.55, 25.4' Lt.  
 Existing Water Valve; Plug Tee (S), Remove  
 Valve, and Salvage Valve Box to the City.

N: 1,684,415.8958, E: 1,652,028.5985  
 Waterman St., Sta. 134+85.03, 28.0' Lt.  
 Remove Existing Fire Hydrant and Salvage to the City

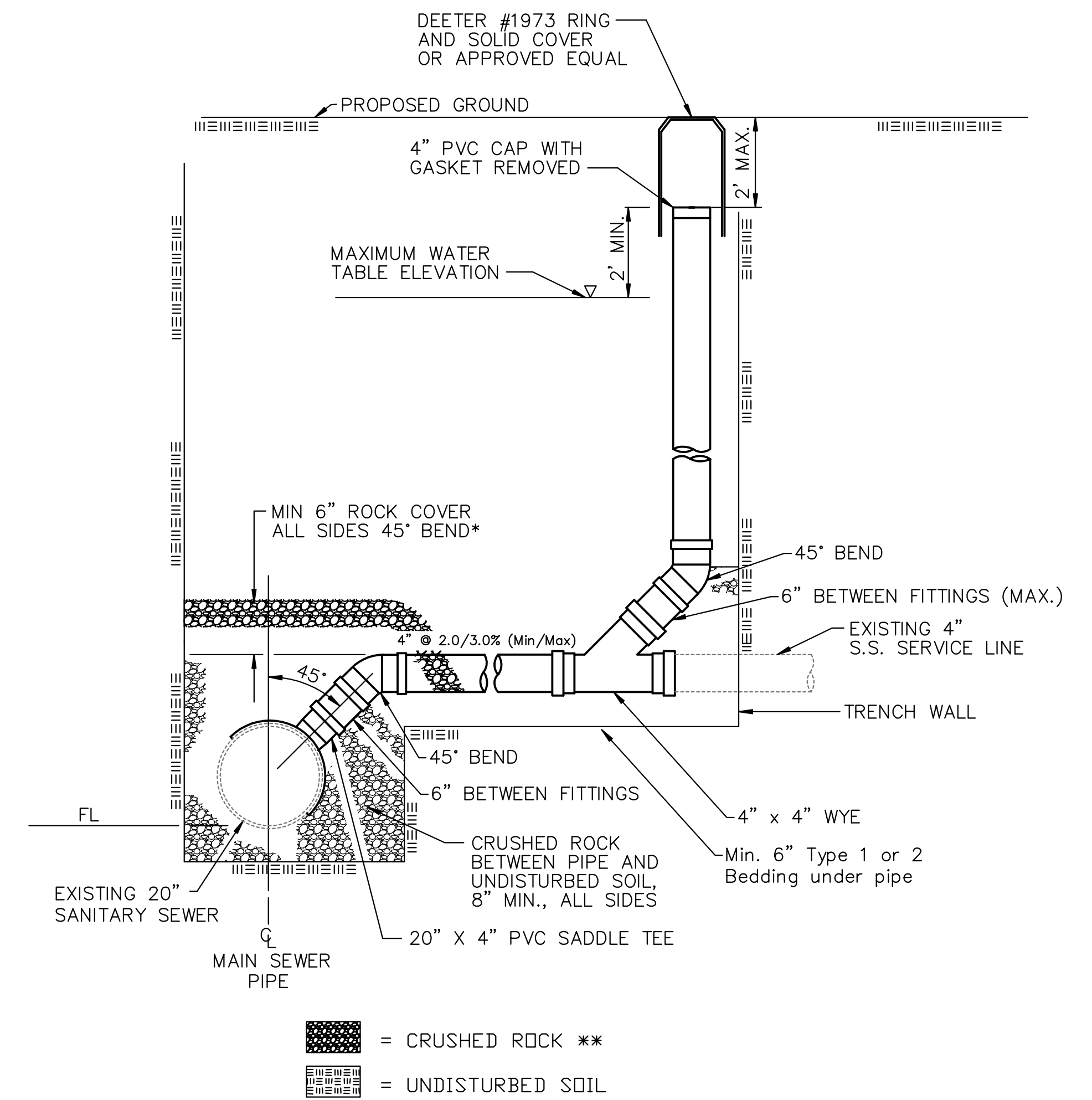
@ Waterman St., P.O.T. Sta. 135+42.25

@ Waterman St.,  
 P.C. Sta. 133+04.28

Adjust MH top  
 See sheet no. W16

N: 1,684,391.2478, E: 1,651,996.8855  
 @ Waterman St., Sta. 134+52.88 3.9' Lt.=  
 Existing Sanitary Sewer Manhole  
 Existing Top of Manhole Elev.= 1294.6  
 Prop. MH Top Elev. = 1294.9  
 Difference = +0.3'  
 Replace MH Lid and Adjust MH Top Elevation.

N-1,684,403.1937, E-1,651,996.4770  
 @ Waterman St., Sta. 134+52.69 15.8' Lt.=  
 Existing Sanitary Sewer Manhole  
 Existing Top of Manhole Elev.= 1294.6  
 Prop. MH Top Elev. = 1294.8  
 Difference = +0.2'  
 Replace MH Lid and Adjust MH Top Elevation.



\*\*CRUSHED ROCK USED FOR ENCASEMENT AND BEDDING SHALL CONFORM TO ASTM C-33, GRADATION NO. 67, AND SHALL MEET ALL REQUIREMENTS FOR PORTLAND CEMENT CONCRETE PAVEMENT COARSE AGGREGATE, SECTION 406.2, CITY OF WICHITA STANDARD SPECIFICATIONS. ALL CRUSHED ROCK FOR BEDDING AND ENCASEMENT SHALL EXTEND TO THE LIMITS OF THE MANHOLE EXCAVATION.

**4" CLEANOUT ASSEMBLY DETAIL AND SERVICE DETAIL**

\* 4" CLEANOUT ASSEMBLY AND SERVICE PIPE ARE PAID FOR ON A PER EACH BASIS AND INCLUDES ALL PIPE AND MATERIALS FROM THE SANITARY SEWER MAIN TO THE @ OF THE CLEANOUT AND/OR CONNECTION TO THE EXISTING SERVICE PIPE.

X = Denotes Pipe to be removed.  
 (See Paving and Storm Sewer Plans also,  
 C.O.W. Project No. 472-84657)

Sowed 12-31-2008 4:00:14 PM by CSI  
 Plot Scale 1:40 01-02-2009 11:23:13 AM by MAC  
 C:\2009\05787\001\Phase\C\05787-001-Phase1C-C-W16Plan01

No.	Revision	By	Date
SOUTHEAST 48" WATERLINE - PHASE 1C WASHINGTON/WATERMAN TO LEWIS/IDA <b>MISCELLANEOUS ADJUSTMENT PLANS</b> JAMES L. ARMOUR, P.E. - CITY ENGINEER CITY OF WICHITA PROJECT NO. 448-90417 <b>Professional Engineering Consultants, P.A.</b> 303 S. TOPEKA • WICHITA, KANSAS 67202 316-262-2691 • FAX 316-262-3003			
Designed by	MDK, EJB	Job No.	35-05787-001-42
Drawn by	RFT	Date	March 2006
			Sht. W14 of 23