

# GENERAL NOTES:

1. Contractor will be required to provide notice to utility companies a minimum of twenty-four (24) hours prior to any excavation, as follows:

Kansas One-Call 687-2470

The Contractor must notify the following in case of an emergency:

Cox Communications 262-4270  
 Kansas Gas Service 1-888-482-4950  
 Westar Energy 383-8650  
 Aquila Energy 1-800-303-0357  
 SBC 268-2245  
 City of Wichita Water Dept. 268-4563  
 City of Wichita Sewer Maint. 268-4024  
 City of Wichita Storm Sewer Maint. 268-4090  
 City of Wichita Traffic Maint. 268-4034  
 Conoco Pipeline Co. 1-800-231-2551  
 Southern Star Pipeline Co. 529-6600  
 Phillips Pipeline Co. 1-800-766-8230  
 Jayhawk Pipeline Co. 1-888-542-9575

2. Utility service lines, poles, valve boxes, meters, and appurtenances are to be adjusted as necessary by others prior to construction unless the plans specifically call for their adjustment by the Contractor or unless the plans specifically identify a utility to be adjusted by its owner during construction. Existing utilities and their location, as shown on the plans, represent the best information obtainable for design. The Contractor will be required to work around existing utilities within the right-of-way which do not conflict with proposed construction.

3. Rubble from the removal of miscellaneous structures and excess excavation which is to be wasted shall be disposed of on sites to be provided by the Contractor. These sites shall be approved by the Engineer as to suitability, appearance and site location. Locations, in the opinion of the Engineer, that will leave an unsightly appearance will not be approved. All disposal sites must be approved by the Kansas Department of Health and Environment. Material either stockpiled or disposed of in a flood plain would require a Kansas State Board of Agriculture permit. Any material dumped in waters of the United States or wetlands is subject to U.S. Corps of Engineers permitting regulations. Any material buried or stockpiled beyond approved construction limits would require additional archaeological investigations unless buried in a previously approved borrow location.

4. Trees and shrubs in public right-of-way which are in direct conflict with proposed new construction shall be removed by the Contractor ONLY with the Developer or Baughman Company approval. Trees and shrubs which are not in direct conflict with proposed new construction shall be saved and protected from damage.

5. The Contractor shall give all property owners and/or tenants of developed property abutting the construction of this project a minimum of ten (10) days advance notice prior to start of construction.

6. The Contractor shall be responsible for preserving property irons. The Contractor will be required to re-establish any property irons which are damaged or destroyed by his construction operations. Such irons shall be re-established by a licensed land surveyor in accordance with state laws.

7. All existing and proposed erosion control measures including silt fencing, erosion control mat, straw bales, inlet barriers, and const. entrance shall be maintained throughout construction by the contractor and until project is accepted by the City of Wichita. The on-site engineer shall complete weekly reports on the status of erosion control measures. The contractor shall be required to comply with maintenance and/or replacement of erosion control measures as determined by the on-site engineer until project is accepted by City of Wichita.

8. All excess excavation shall remain on-site and shall be stockpiled or spread at a location determined by the engineer.

9. A saw cut of at least one-half the depth of existing surface courses or one-fourth the depth of the existing total pavement thickness shall be provided at locations where proposed construction abuts the existing surface course or pavement for which partial removal of that surface or pavement is required. Sawed joint to facilitate removal within three (3) feet of existing joints will not be permitted and for such instances the limits of removal shall extend to the existing joint. Such saw cuts will not be paid for directly and this cost shall be considered as subsidiary to the removal of the surface or pavement.

10. The contractor shall adjust valve boxes as necessary to match proposed grade. Cost to be included in bid item, "Site Clearing & Restoration."

11. Opening and closing of water valves shall be done slowly to prevent damage to the water distributions system from water hammer. All valves closed by the contractor must be reopened as new construction permits. Project inspector must ascertain that any valve closed by the Contractor is reopened. Contractor will be permitted to operate water valves only when the project inspector assigned to the project is present.

12. Limits of earthwork shall match existing ground elevations at the right-of-way line unless otherwise noted on the plans with a new finished grade elevation. When a new finished grade elevation is shown, the earthwork shall extend one foot beyond the right-of-way line and then slope up or down using permissible slopes to match the existing ground surface.

13. Cross Sections Reflect earthwork topography as of 05/2008. Contractor shall satisfy himself with the earthwork quantities as bid for excavation and compacted fill prior to bidding. No additional payments or change orders for dirtwork will be accepted.

14. All areas disturbed within U.S. 54 Highway (Kellogg) and 143rd St. East R/W during construction shall be seeded, mulched, and fertilized (Permanent and Temporary Seeding) per attached Kansas Department of Transportation Sheet. All cost associated with seeding shall be incidental to bid item "Project Seeding".

15. All Costs associated with Traffic Control shall be incidental to Lump Sum Bid item "Site Clearing and Restoration".

16. The developer for this project is Taylor Enterprises, Inc, and may be contacted via Dan Taylor, JR. @ (316) 634-3321.

## Street Paving to serve

# PRAIRIE POND PLAZA 2ND ADDITION

Kellogg Dr., from the south-west corner of Lot 1, Block A, east to the south-east corner of Lot 6, Block A

## CITY OF WICHITA, KANSAS

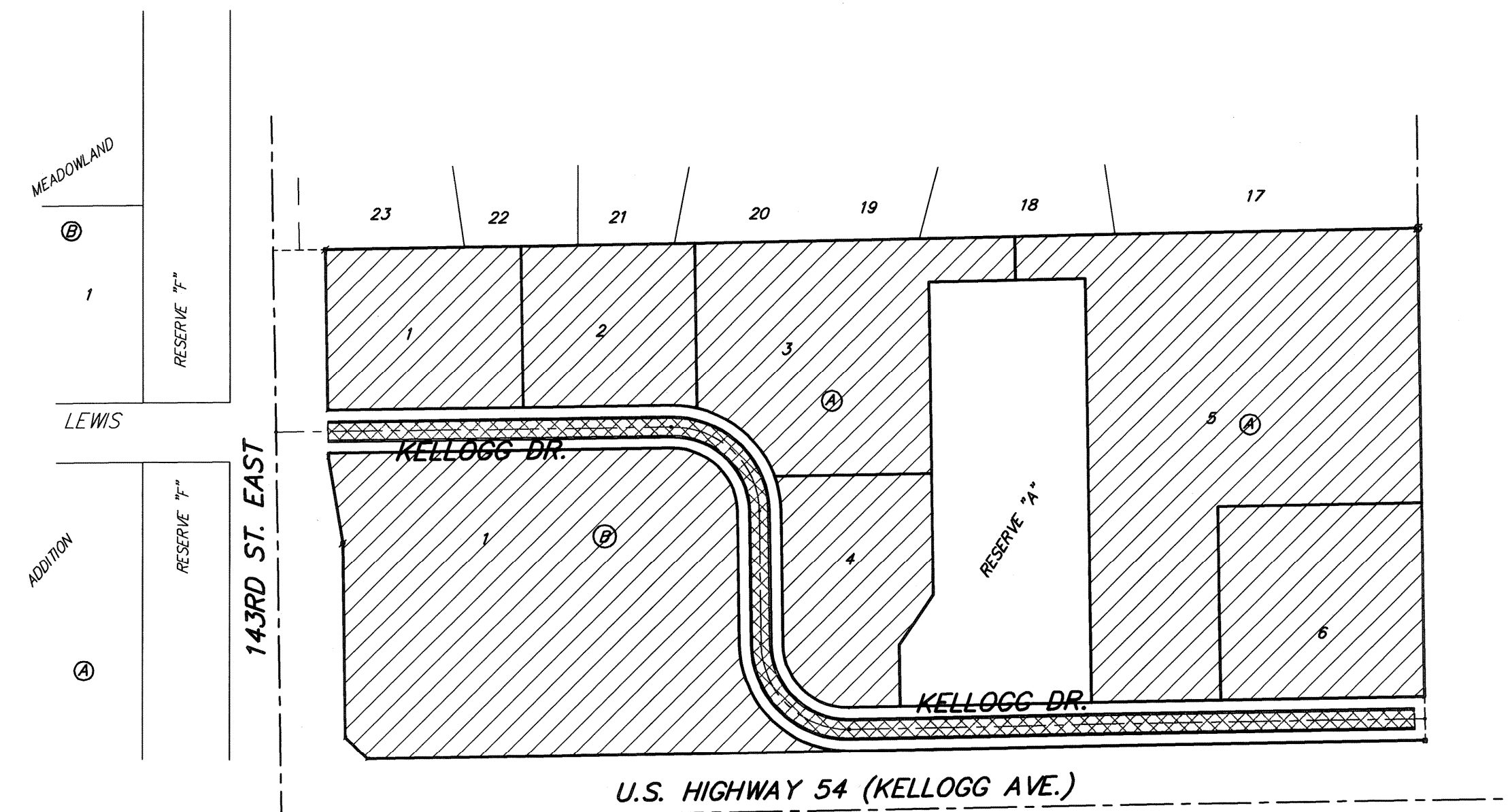
Jim L. Armour, P.E. City Engineer

Project Number

472-84686

O.C.A. Number

766207



Benefit District:

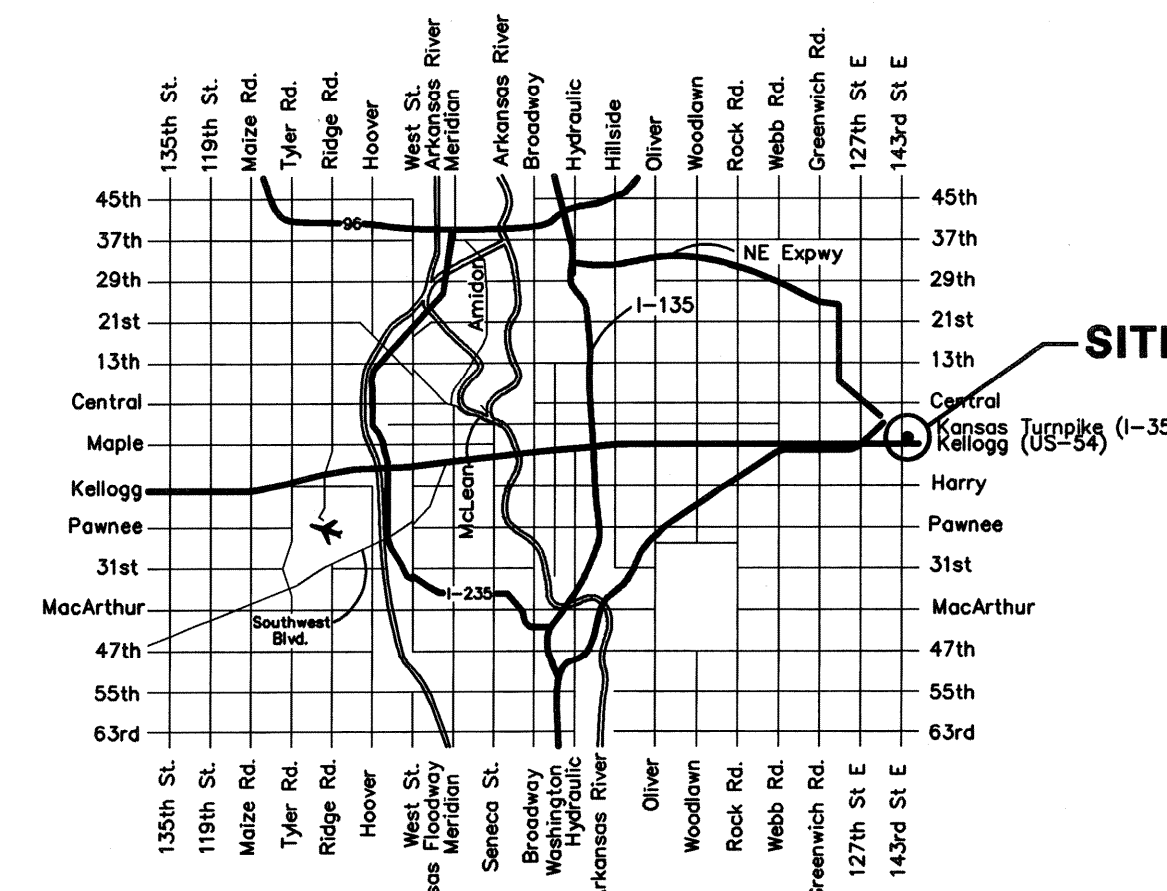
Proposed Streets:

### Benchmarks

"□" cut on traffic signal light pole base, NW corner of Kellogg & 143rd Street East. Elev. = 1318.61 NGVD (131.21 City Datum)

### Sheet Index

Title Sheet	2
25' Pavement Detail	3
Sign Details	4
Miscellaneous Details	5-8
Kellogg Dr.	9
Erosion Control Plan	10-13
Erosion Control BMPs Details	13A
KDOT Seeding Details	14-19
Earthwork Cross-Sections	20
Coordinate Sheet	21
Copy of Plat	



Vicinity Map



Project Earthwork Totals			
	Excavation	Loose Fill	Compacted Fill
Street (R/W)	8528.0	248.4	N/A
Project Total	8528.0	248.4	N/A
Total Project Length			
1,573 L.F. = 0.30 Miles			



Baughman Company, P.A. 315 Ellis St. Wichita, KS 67211 P 316-262-7271 F 316-262-0149  
 ENGINEERING | SURVEYING | PLANNING | LANDSCAPE ARCHITECTURE