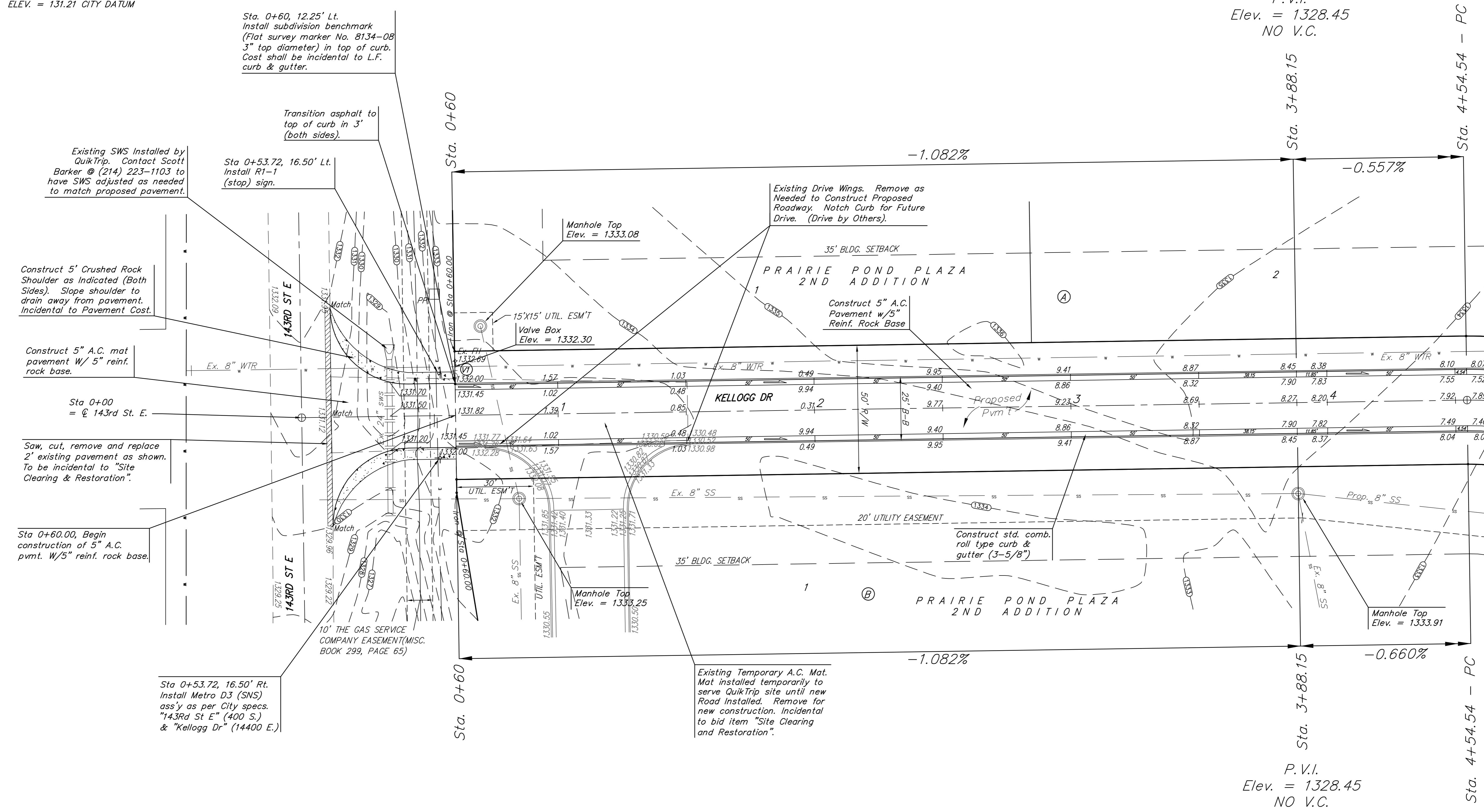
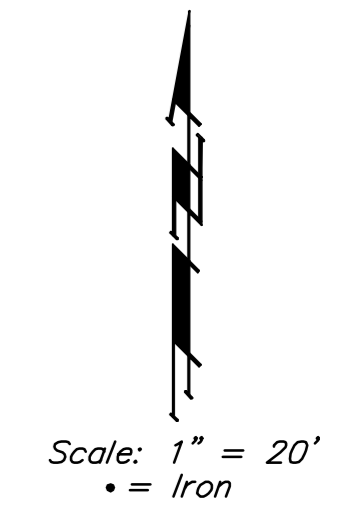


BENCHMARK:
 "□" CUT ON TRAFFIC SIGNAL
 LIGHT POLE BASE, NW CORNER OF
 KELLOGG & 143RD STREET EAST.

ELEV. = 1318.61 NGVD
 ELEV. = 131.21 CITY DATUM

P.V.I.
 Elev. = 1328.45
 NO V.C.



Sta. 0+60, 12.25' Lt.
 Install subdivision benchmark
 (Flat survey marker No. 8134-08
 3" top diameter) in top of curb.
 Cost shall be incidental to L.F.
 curb & gutter.

Transition asphalt to
 top of curb in 3'
 (both sides).

Existing SWS installed by
 QuikTrip. Contact Scott
 Barker @ (214) 223-1103 to
 have SWS adjusted as needed
 to match proposed pavement.

Sta 0+53.72, 16.50' Lt.
 Install R1-1
 (stop) sign.

Construct 5' Crushed Rock
 Shoulder as indicated (Both
 Sides). Slope shoulder to
 drain away from pavement.
 Incidental to Pavement Cost.

Construct 5" A.C. mat
 pavement w/ 5" reinf.
 rock base.

Sta 0+00
 = @ 143rd St. E.

Saw, cut, remove and replace
 2" existing pavement as shown.
 To be incidental to "Site
 Clearing & Restoration".

Sta 0+60.00, Begin
 construction of 5" A.C.
 pvmt. w/5" reinf. rock base.

Sta 0+53.72, 16.50' Rt.
 Install Metro D3 (SNS)
 ass'y as per City specs.
 "143rd St E" (400 S.)
 & "Kellogg Dr" (14400 E.)

Existing Temporary A.C. Mat.
 Mat installed temporarily to
 serve QuikTrip site until new
 Road Installed. Remove for
 new construction. Incidental
 to bid item "Site Clearing
 and Restoration".

VALVE LOCATION TABLE

VALVE NUMBER	BASELINE STATION	OFFSET DISTANCE	OFFSET DIRECTION
1	0+60.00	19	Lt.

Paving contractor will be responsible to operate all water valves on the project, in the presence of the inspector, to ensure accessibility to the valves, and that all valves are left in the "ON" position when the project is completed.

NOTE:
 ROLL TYPE CURB & GUTTER TO
 BE CONSTRUCTED ON THE
 PAVEMENT SHOWN ON THIS SHEET.
 TOP OF CURB ELEVATIONS ARE
 GIVEN FOR FULL HEIGHT CURB.

		Prairie Pond Plaza 2nd Addition	
		KELLOGG DRIVE	
Sta. 0+00 to 4+54.54		<small>Baughman Company, P.A. 315 Ellis St. Wichita, KS 67211 F 3163622271 F 3163620149 ENGINEERING SURVEYING PLANNING LANDSCAPE ARCHITECTURE</small>	
PROJECT NUMBER 472-84686	DESIGN MWS	DRAWN JRW	DATE 5-09-08
REVISIONS:	APPROVED MWS	SCALE Noted	SHEET 5 OF 21
E:\Prairie Pond Plaza\Street & Water\05.08_Str.dwg		05-05-E249	