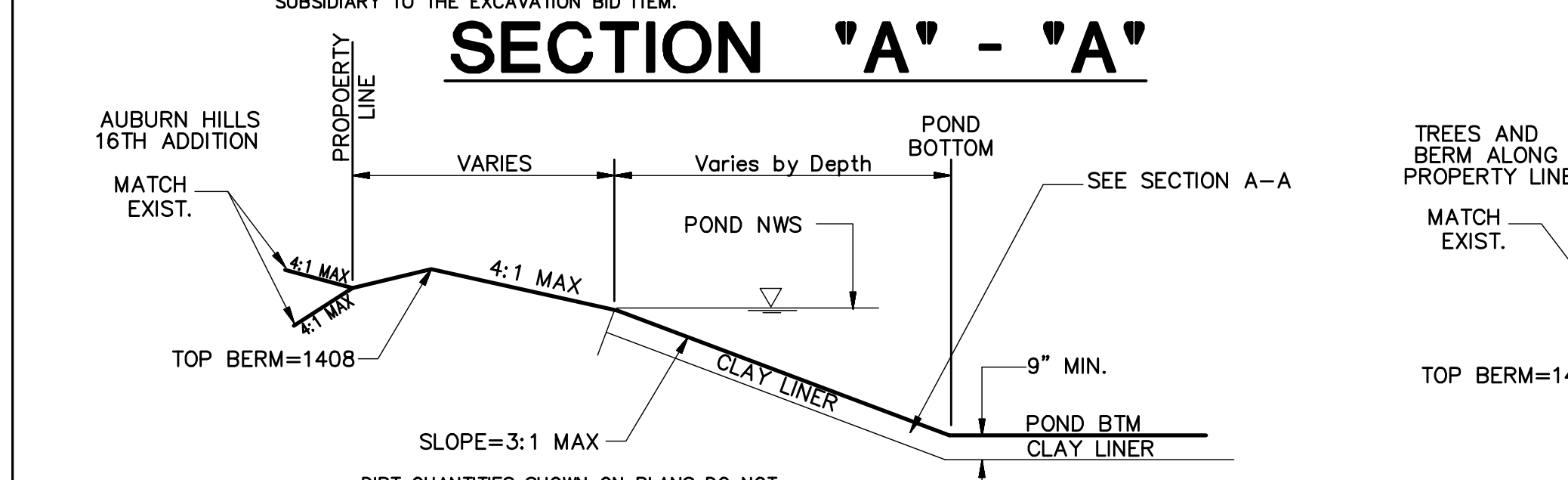
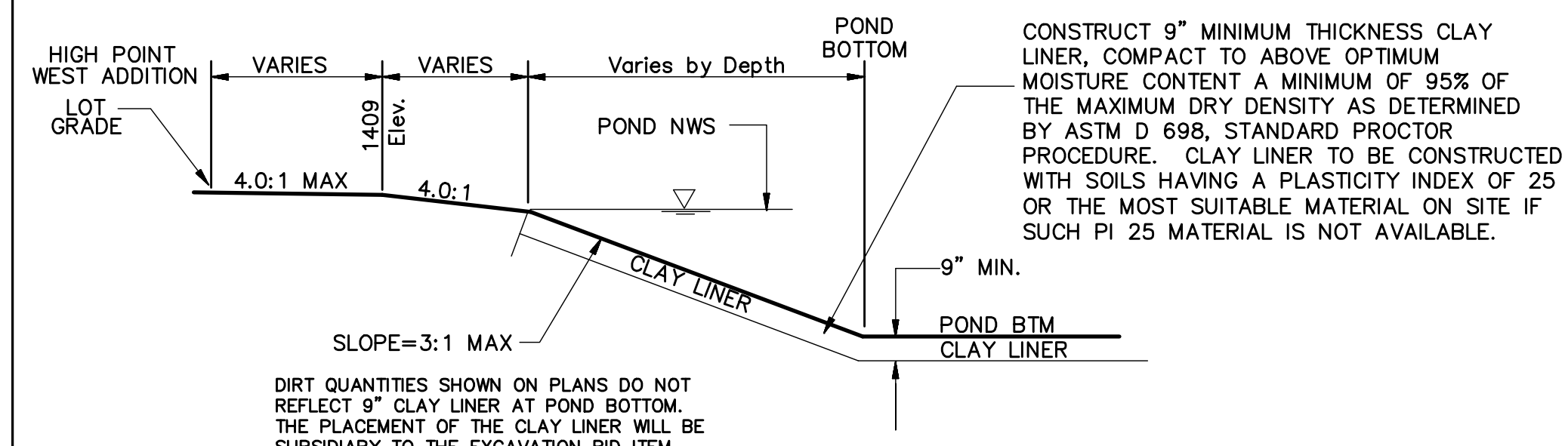


### POND GRADING SECTIONS



**NOTE:** ALL DISTURBED AREAS SHALL RECEIVE TEMPORARY SEEDING WITHIN A SHORT PERIOD OF TIME AFTER DISTURBANCE IF CONSTRUCTION IS TO CEASE FOR MORE THAN 21 DAYS. COST SUBSIDIARY TO EROSION CONTROL.

ALL POND AREAS AND SLOPES ABOVE ELEVATION 1405.0 SHALL RECEIVE PERMANENT KANSAS PREMIUM BLEND FESCUE SEEDING.

TREES WITHIN GRADING SHALL ONLY BE REMOVED AS NEEDED FOR CONSTRUCTION OF POND. SUBSIDIARY TO SITE CLEARING.

### CONCRETE COLLAR NOTES

**REINFORCING STEEL:** ALL DIMENSIONS RELATIVE TO REINFORCING STEEL ARE TO CENTERLINE OF BAR UNLESS OTHERWISE NOTED. ALL CLEARANCES SHALL BE 2" UNLESS OTHERWISE NOTED. ALL REINFORCING STEEL SHALL CONFORM TO A.S.T.M. DESIGNATION A-615 GRADE 60 AND SHALL BE EPOXY COATED.

**PAYMENT:** A DEDUCTION IN CONCRETE QUANTITIES HAS BEEN MADE FOR THE PIPE OPENINGS, NO DEDUCTION MADE FOR STEEL VOLUME. THE "24" COLLAR (REINFORCED CONCRETE) SHALL BE PAID FOR AT THE UNIT PRICE BID PER EACH IN PLACE INCLUDING CONCRETE, REINFORCING STEEL, EXCAVATION AND ALL OTHER MISCELLANEOUS MATERIALS, LABOR, TOOLS, EQUIPMENT AND INCIDENTALS NECESSARY TO COMPLETE THE WORK. QUANTITIES SHOWN ARE FOR INFORMATION ONLY.

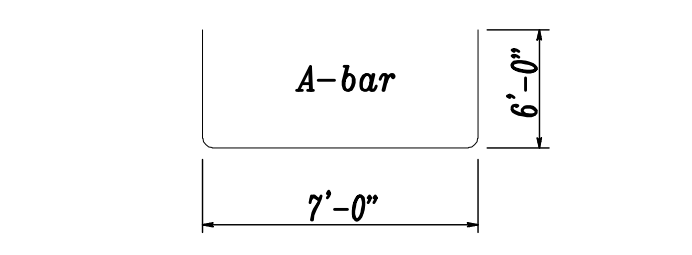
**CONCRETE:** BEVEL ALL EXPOSED EDGES WITH A 3/4" TRIANGULAR MOLDING OR FINISH WITH AN APPROVED EDGING TOOL. CONCRETE SHALL BE AS PER ENGINEER'S SPECIFICATIONS FOR STRUCTURAL CONCRETE PAVING MIX REQUIRING IT TO HAVE USE 6.5 SACKS/C.Y., 5.4 GAL. WATER/SACK, 50:50 COARSE TO FINE AGGREGATE RATIO, 5% TO 7% AIR ENTRAINMENT, 3" TO 4" SLUMP, AND A 28 DAY COMPRESSIVE STRENGTH OF 4,000 P.S.I. ALL PIPES SHALL BE FLUSH CUT PRIOR TO BEING CAST INTO THE HEADWALL.

#### 24" COLLAR RE-BAR SCHEDULE

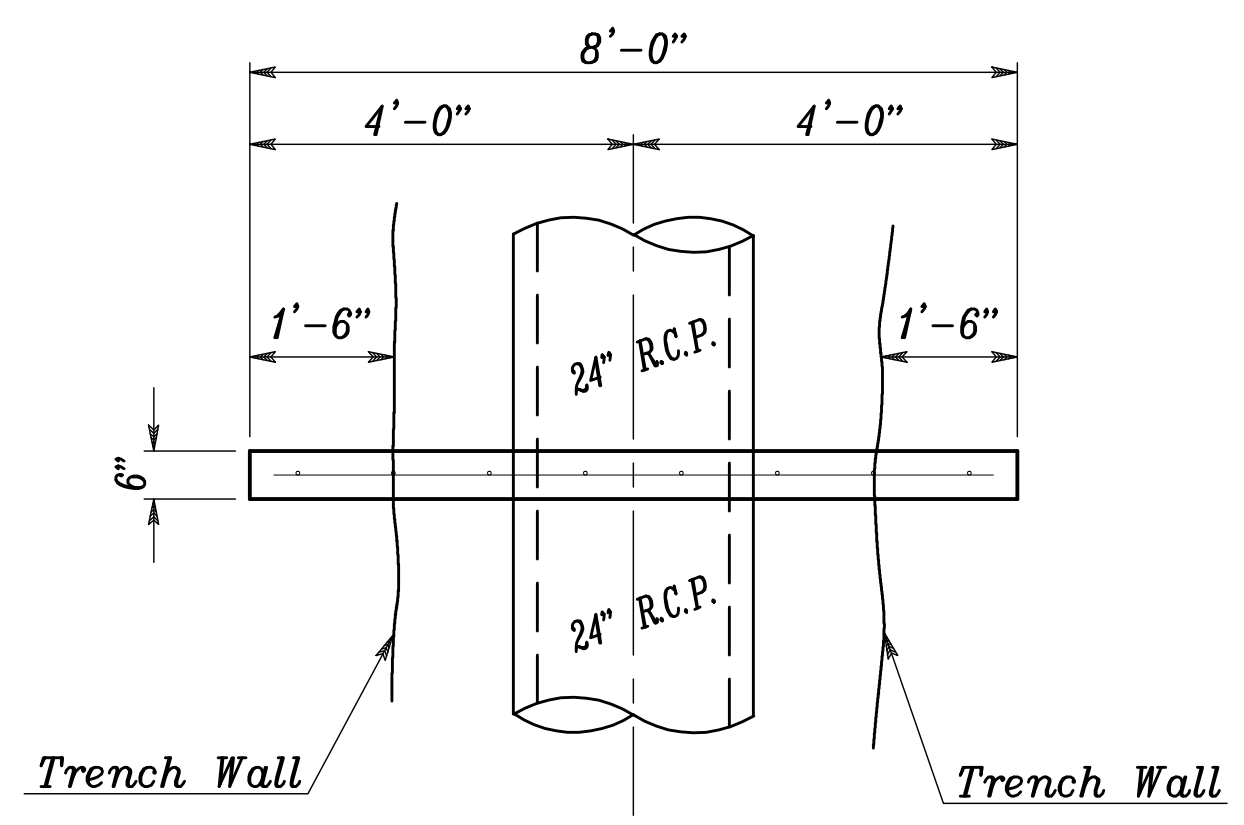
Mark	Shape	No.	Length	Weight
A		1	19'-0"	12.69
B		4	5'-10"	15.59
C		4	7'-6"	20.04
D		8	2'-3"	12.02
E		2	1'-2"	1.56
F		2	2'-0"	2.67

Total Rebar 64.6 Lbs.  
Concrete 0.88 C.Y.

All Concrete Reinforcement to be #4 bars.

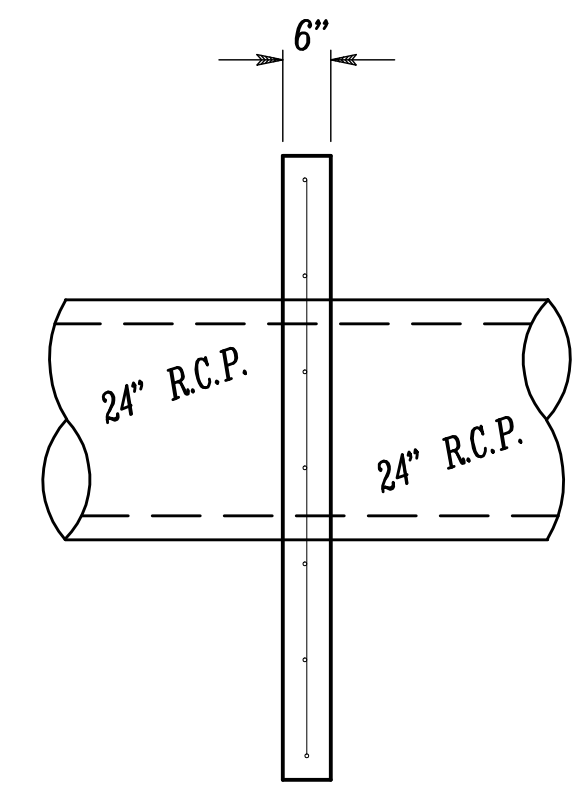


BENDING DIAGRAM

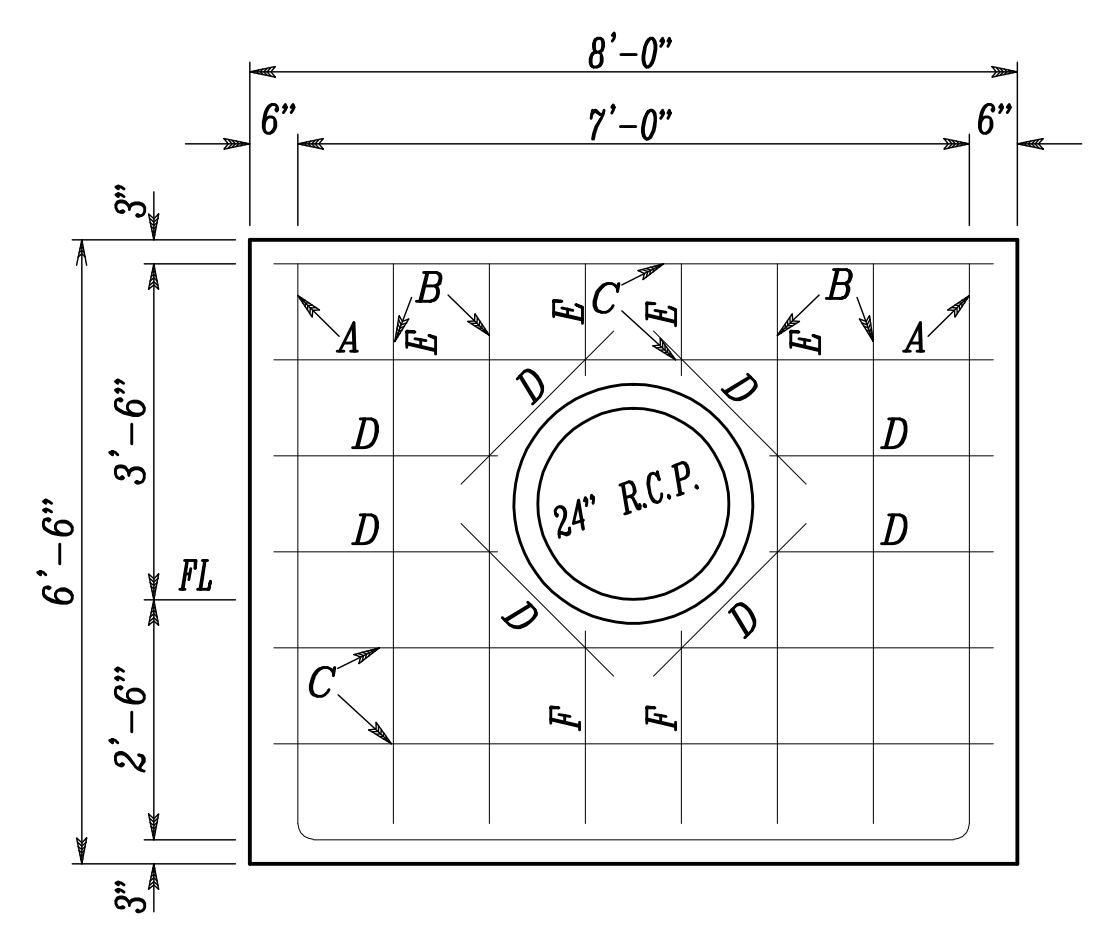


PLAN

**NOTE:** EXTEND COLLAR A MINIMUM OF 1'-6" INTO UNDISTURBED SOIL.



SECTION



FRONT

**NOTE:** ALL REINFORCING STEEL SHALL BE SPACED 1'-0" UNLESS OTHERWISE NOTED.

Scale: 1"=2'

### 24" COLLAR DETAIL

HIGH POINT WEST ADDITION  
 STREET AND STORM SEWER IMPROVEMENTS  
 POND GRADING NOTES  
**CITY OF WICHITA, KANSAS**  
 JAMES L. ARMOUR, P.E. - CITY ENGINEER  
 C.O.W. Proj. No. 472-84705 OCA No. 766219

---

**POE & ASSOCIATES, INC.**  
 CONSULTING ENGINEERS  
 5940 E. Central, Suite 200 • Wichita, KS 67208-4242  
 Phone 316/665-4114 • FAX 316/665-4444

---

**FINAL**  
 Designed By: J. Dickman  
 Drawn By: M. Tucker  
 P.O. Job No.: 1916A  
 Date: January 2009

---

Sheet  
 7 of 41