

# REGENCY LAKES COMMERCIAL 2ND ADDITION

AN ADDITION TO WICHITA, SEDGWICK COUNTY, KANSAS

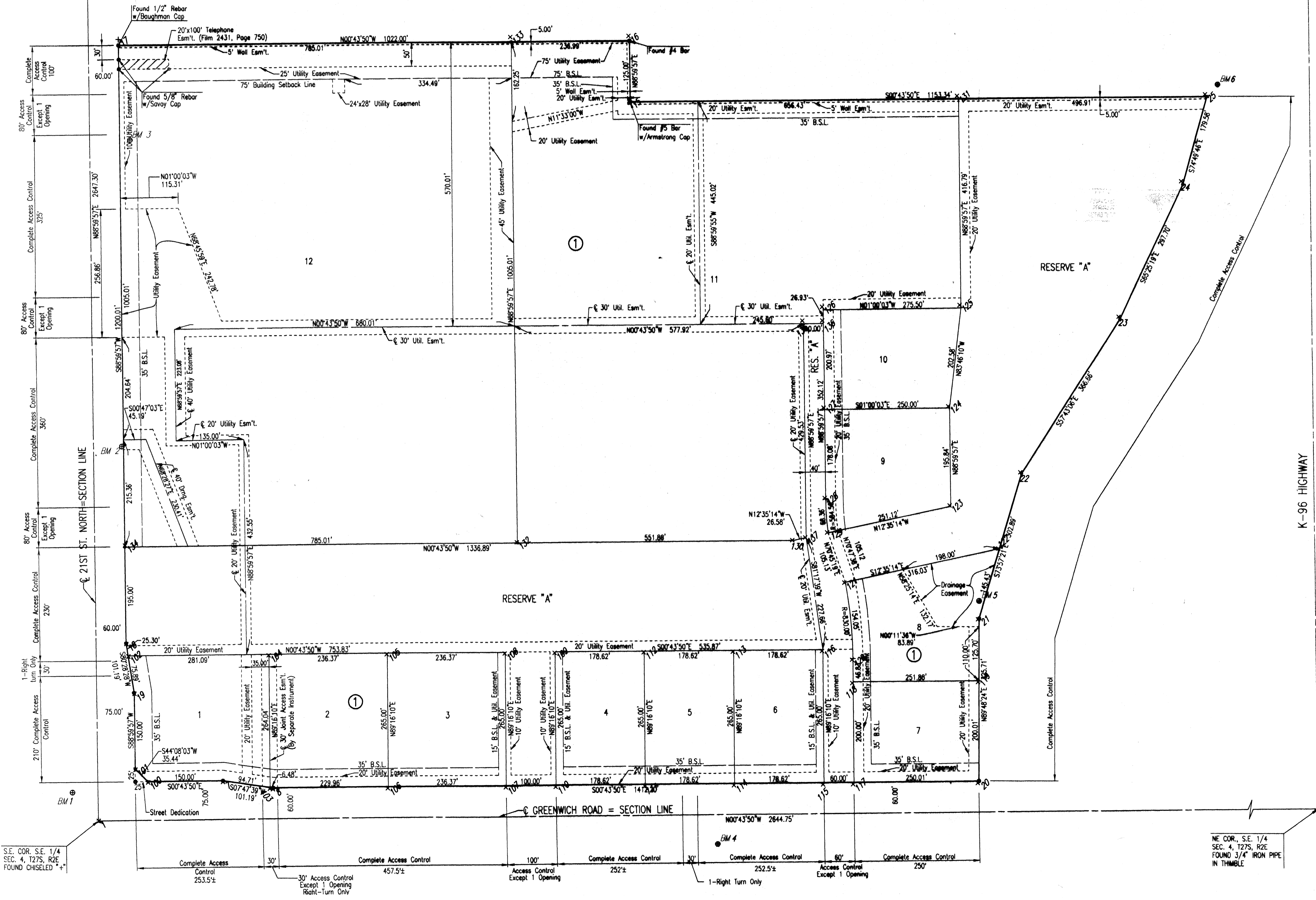
N.W. COR. S.E. 1/4  
SEC. 4, T27S, R2E

S.W. COR. SE 1/4  
SEC. 4, T27S, R2E  
FOUND 1/2" REBAR  
WITH MKEC CAP

SCALE: 1"=100'  
 • FOUND #5 BAR W/MKEC CAP  
(UNLESS OTHERWISE NOTED)  
 • SET 1/2" REBAR W/ PEC CAP  
(UNLESS OTHERWISE NOTED)

COORDINATE LIST		
POINT	NORTH	EAST
1	50,000.0000	50,000.0000
2	52,644.5350	49,966.2788
3	49,953.7597	47,353.1039
4	52,599.8011	47,312.7958
7	50,248.6697	49,921.8239
8	50,348.9248	49,935.5467
15	51,057.0220	48,561.4077
16	51,054.8387	48,436.4268
17	50,032.9217	48,449.4576
18	50,053.8823	49,649.2845
19	50,070.6279	49,749.0791
20	51,761.0119	49,917.5400
21	51,759.9126	49,591.8327
22	51,843.6248	49,300.7406
23	52,039.4512	48,990.7542
24	52,163.2743	48,720.0271
25	52,210.2698	48,546.7024
100	50,098.6827	49,923.7364
101	50,073.2480	49,899.0590
102	50,058.0689	49,674.2341
103	50,342.5062	49,934.6681
104	50,339.1397	49,670.6499
105	50,575.4875	49,667.6361
106	50,578.8663	49,932.6145
107	50,815.2141	49,929.6007
108	50,811.8353	49,664.6222
109	50,911.8272	49,663.3471
110	50,915.2060	49,928.3256
111	51,093.8157	49,926.0480
112	51,090.4369	49,661.0695
113	51,269.0466	49,658.7919
114	51,272.4255	49,923.7704
115	51,451.0352	49,921.4928
116	51,447.6564	49,656.5143
117	51,511.0303	49,920.7277
118	51,508.4803	49,720.7446
119	51,760.3368	49,717.5331
120	51,507.8832	49,673.9200
121	51,491.6755	49,520.9426
122	51,800.1050	49,452.0720
123	51,702.1143	49,366.9632
124	51,698.6935	49,171.1490
125	51,720.6793	48,969.7645
126	51,445.2213	48,974.5767
127	51,448.7316	49,175.5157
128	51,451.8422	49,353.5688
129	51,457.0255	49,421.6902
130	51,387.2542	49,437.2698
131	51,713.3992	48,553.0381
132	50,835.4212	49,444.3064
133	50,817.8667	48,439.4485
134	50,050.4762	49,454.3154
135	51,405.6945	49,002.0093
136	51,445.6916	49,001.4993
137	51,413.1971	49,431.4769

x1 = COORDINATE POINT NO.



Saved 03-24-2008 8:23:32 AM by JMN  
 Plot Scale: 1:100 05-09-2008 9:54:10 AM by BJM  
 Q:\2008\08070\08070-C-102-Plat

Professional Engineering Consultants, P.A.  
 308 S. TOPICKA - WICHITA, KANSAS 67202 • 316-262-2907  
 www.pac1.com • design@pac1.com

SHULLEN  
 architecture

KANZA  
 bank  
 REGENCY LAKES SHOPPING CENTER  
 WICHITA, KANSAS

ISSUE	DATE
PRICING	27 FEB 08
SITE PERMIT	27 MAR 08
FOR PERMIT	1 APR 08
CONSTRUCTION	18 MAY 08

PLAT  
 C-102  
 © 2008 Shelden Architecture, Inc.