

GENERAL NOTES

UNIT STRESSES: Class AAA Concrete; $f'c = 4,000$ p.s.i.
Reinforcing Steel; $f_y = 60,000$ p.s.i.

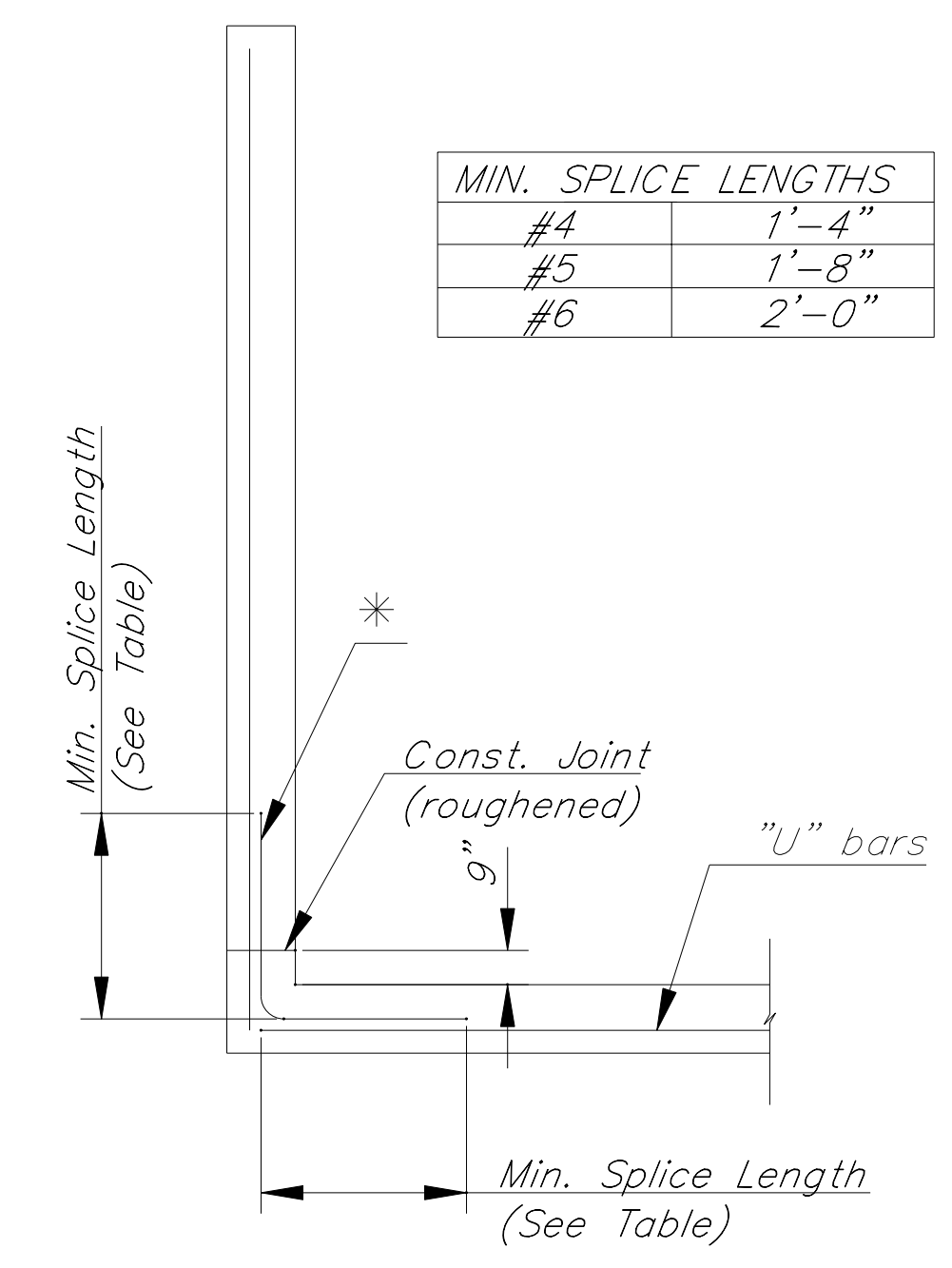
CONCRETE: Class AAA Concrete shall be used throughout. Bevel all exposed edges with a 3/4 inch triangular moulding.

REINFORCING: All reinforcing shall conform to ASTM A615, Grade 60. Welded Wire Fabric shall conform to ASTM A185. Wire fabric shall be electrically welded and shall be composed of 6x6-W1.4xW1.4 welded wire fabric and shall be classified as pounds of reinforcing.

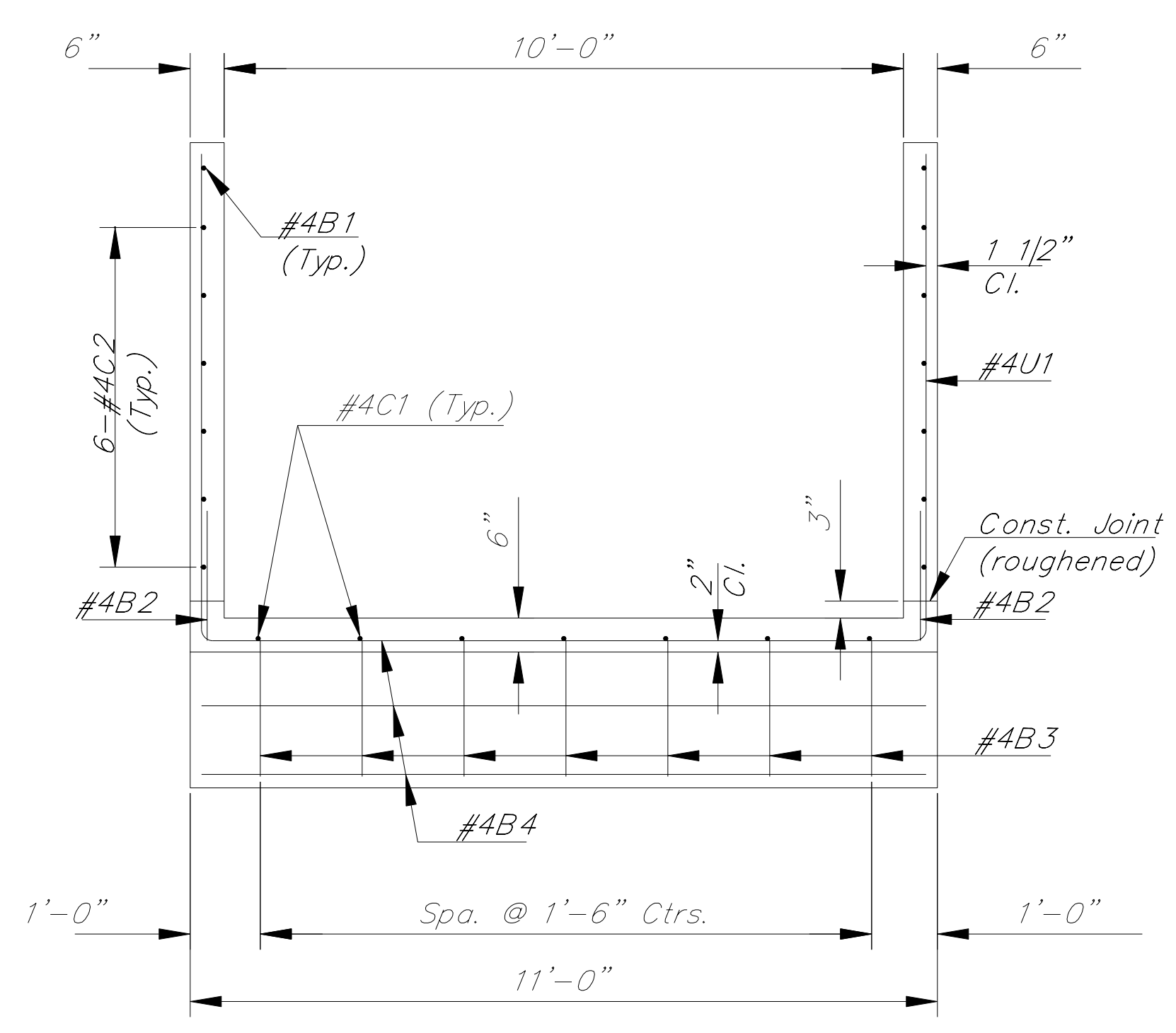
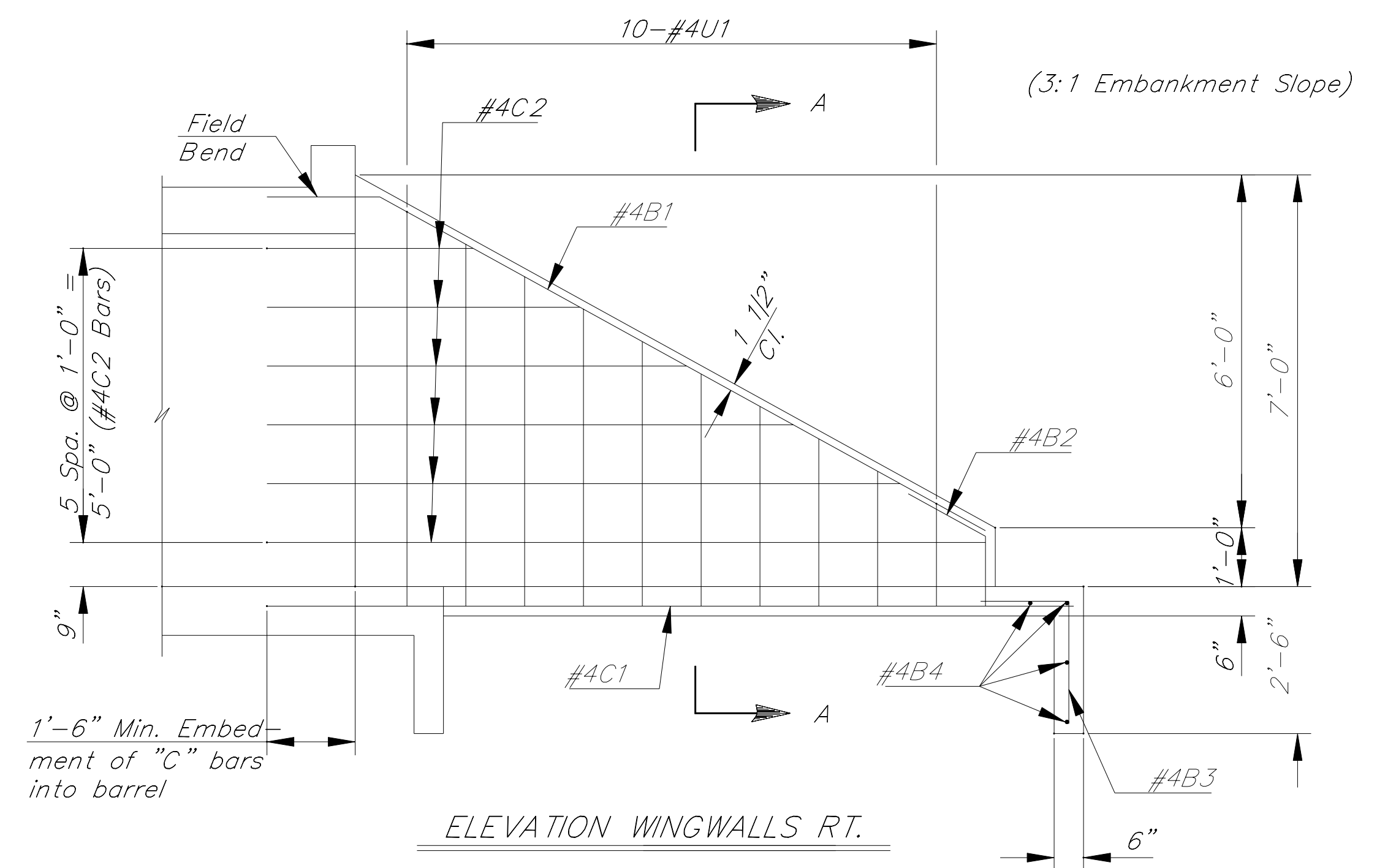
QUANTITIES: Wingwall Quantities include all quantities outside the neat lines of the box, excluding the hubguard.

FOUNDATION AND BACKFILL MATERIAL: Soils judged as high plasticity clays, fat clays, expansive clays, or organic clays are unsuitable for foundation and/or backfill material for wingwalls and will not be used. Where these conditions exist, Foundation Stabiliation and/or Granular Backfill (Wingwalls) shall be used as determined by the Eningeer. See "RCB Auxiliary Details" sheet for additional details.

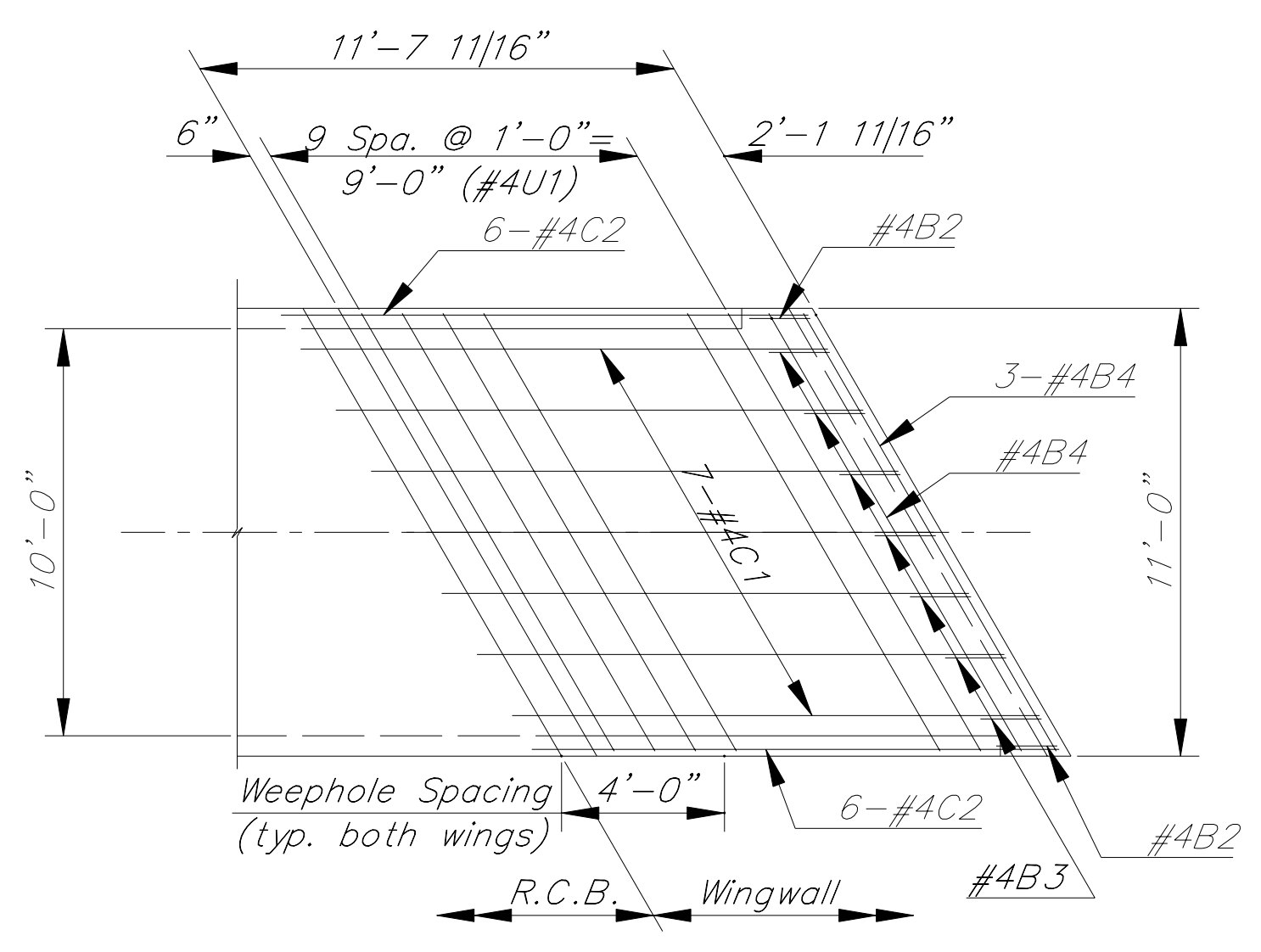
MIN. SPLICE LENGTHS	
#4	1'-4"
#5	1'-8"
#6	2'-0"



* At Contractors option, straight bars and bent bars may be substituted for "U" bars and spliced at locations shown. No allowance will be made for additional steel required. See table for required lap length.

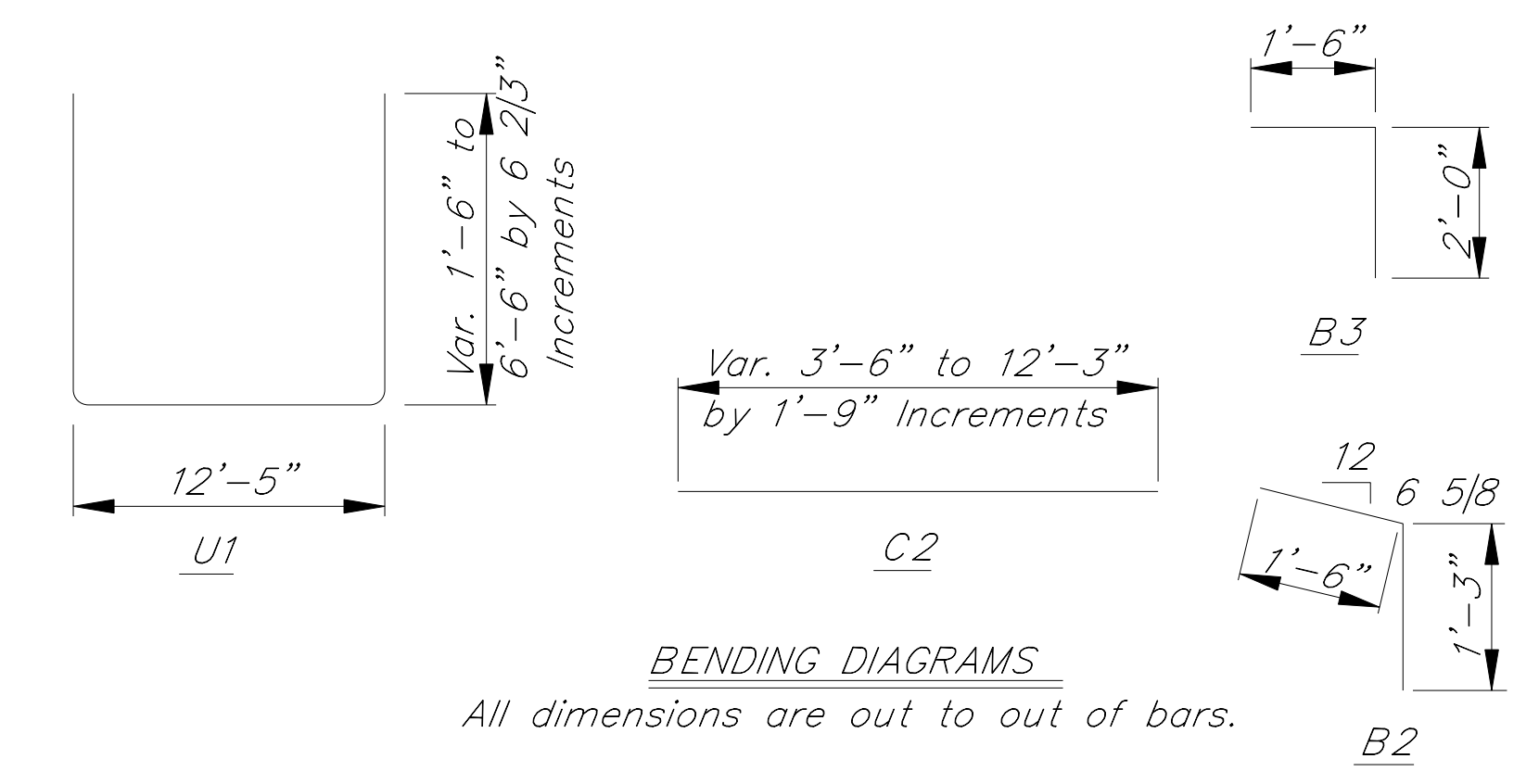


NOTE: Wingwall floor and toewall shall be constructed with the RCB floor. Wingwalls to be constructed with RCB walls.



NOTE: Space Weepholes to clear reinforcing steel. See "RCB Auxiliary Details" sheet for additional weephole details.

PLAN VIEW WINGWALLS RT.



NOTE: Reinforcing Bar List for both wings at Outlet end of box only. * See Bending Diagram

		INLET END						
30° Skew	Mark	#4B1	#4B2	#4B3	#4B4	#4C1	#4C2	#4U1
	Number	2	2	7	4	7	12	10
	Length	13'-8"	2'-9"	3'-6"	12'-3"	12'-11"	*	*

WINGWALL QUANTITIES (Outlet End Only)	
Class AAA Concrete	3.72 C.Y.
Reinforcing Steel	330.94 Lbs.

Quantities listed are included in the Summary of Quantities shown on the RCB.

CITY OF WICHITA
JAMES ARMOUR, P.E., CITY ENGINEER
GYPSUM CREEK
STRAIGHT WINGWALLS
6' Rise (30° Skew Rt.)
CITY OF WICHITA PROJECT NO. 468-82473
PB PARSONS BRINCKERHOFF
188. Wichita, Kansas

K:\32158A\CADD\SHEETS\DRAINAGE\21rcbw.dgn SURV. JG, CP, PLOT CADD DES. DR. TR. CKD. APP. Last Plot-Date: 11/17/99