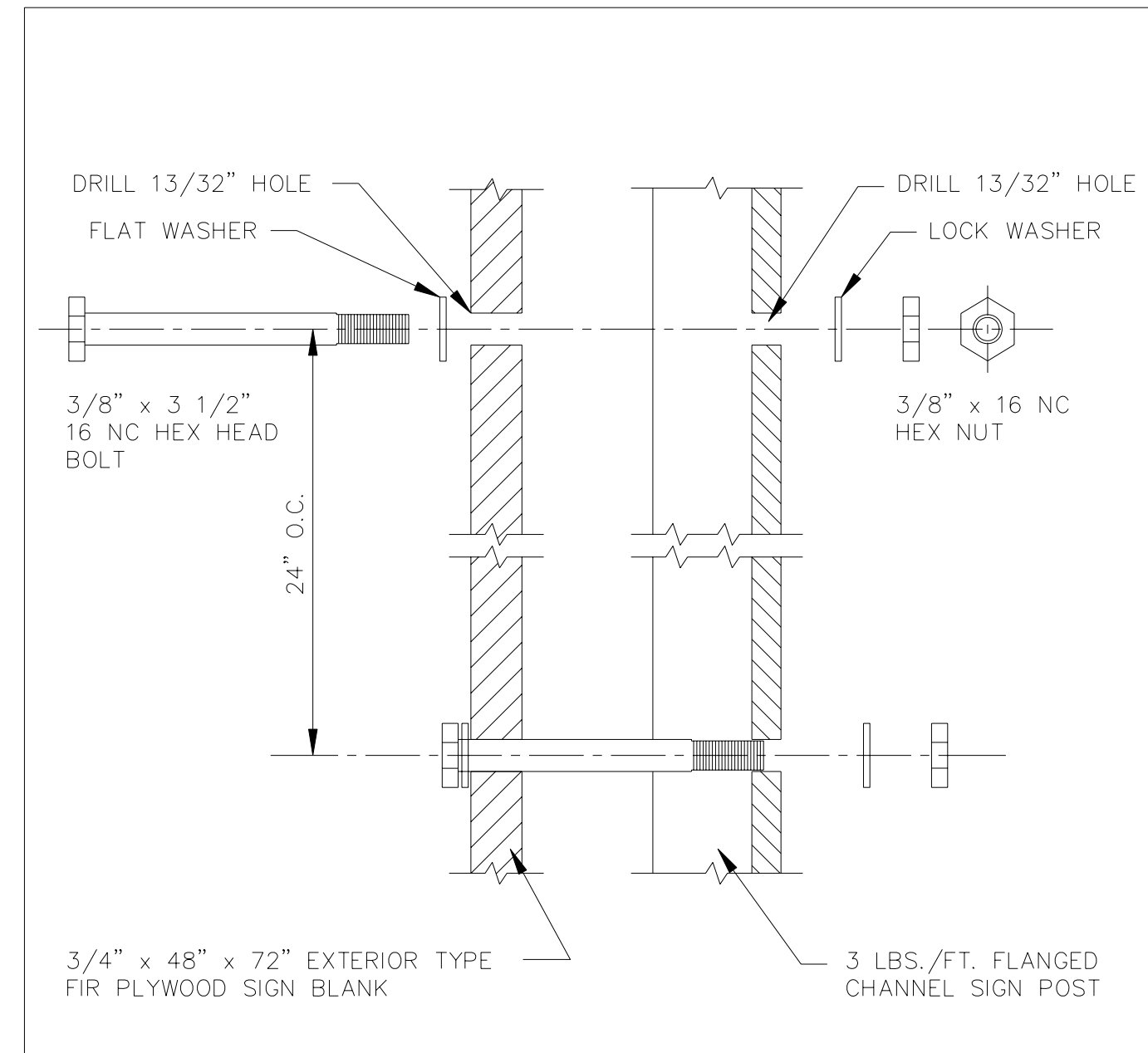
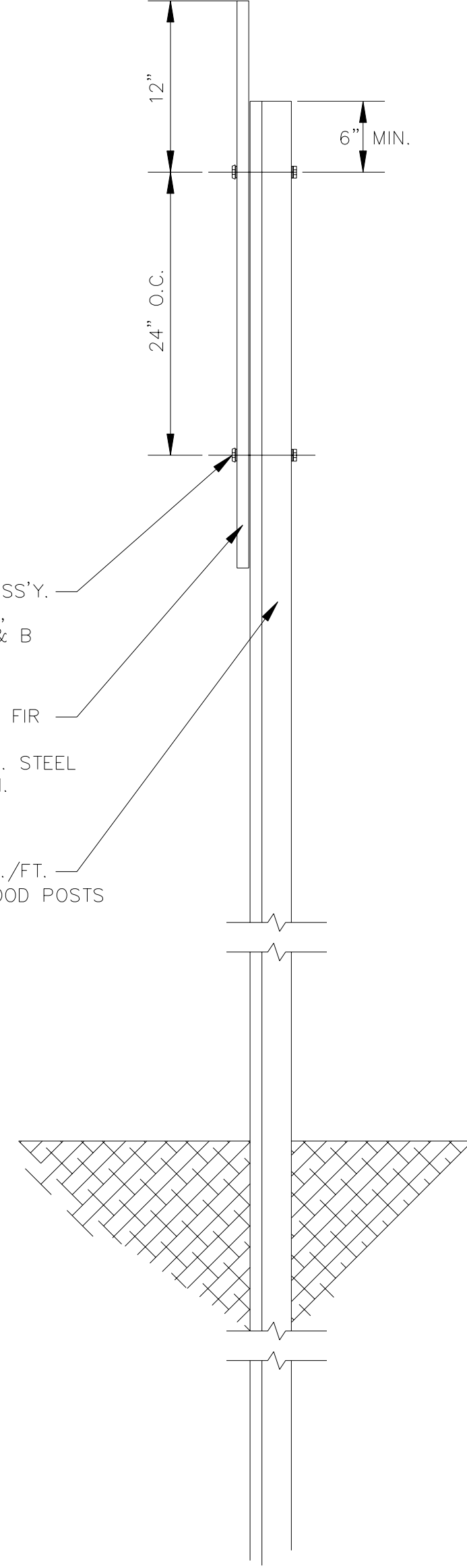


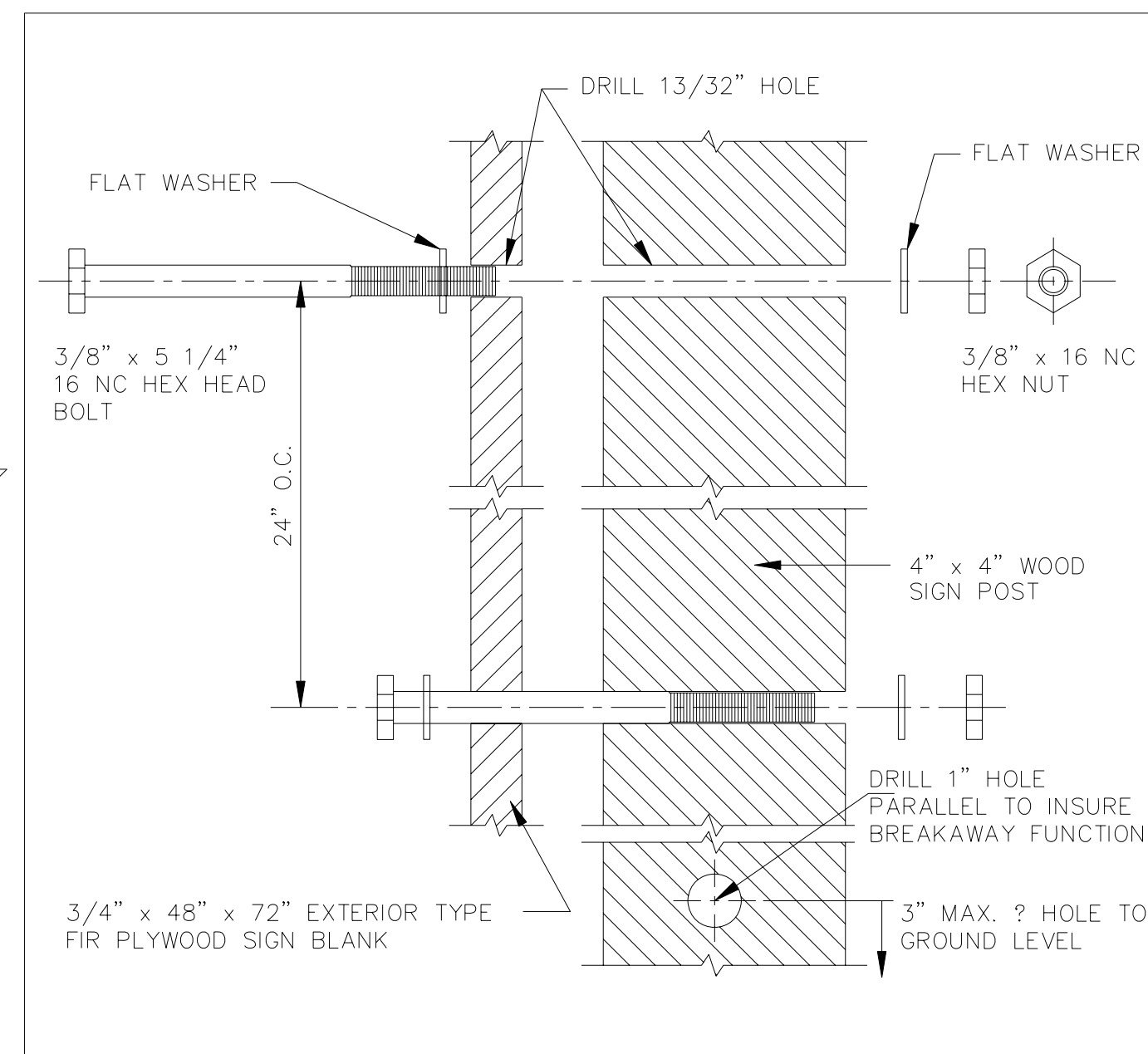
FASTENER ASS'Y.
NOTE 4,
DETAILS A & B

3/4" EXTERIOR TYPE FIR
PLYWOOD NOTE 1
OPTIONAL MAT'L.: 10 GA. STEEL
0.156" SHT. ALUM.

FLANGED CHANNEL POST: 3 LBS./FT.
OPTIONAL MAT'L.: 4"x4" TREATED WOOD POSTS
NOTE 1



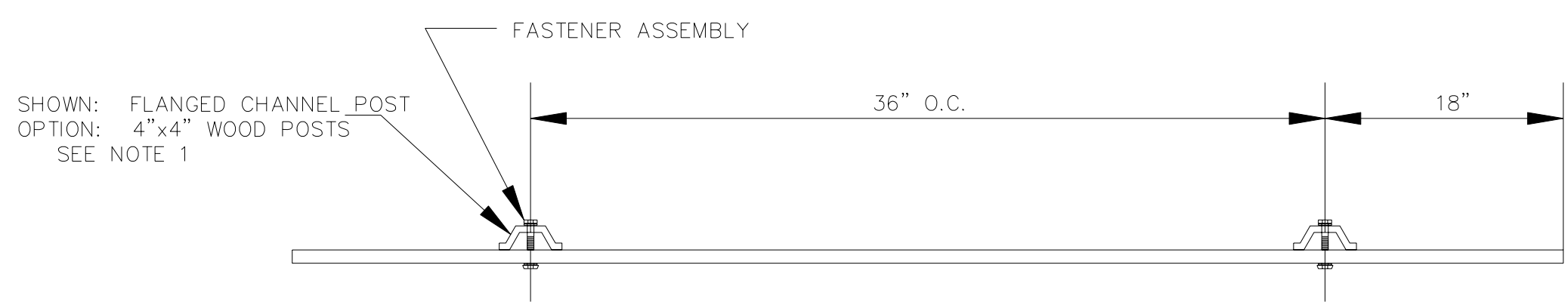
DETAIL A PLYWOOD/FLANGED CHANNEL POSTS



DETAIL B PLYWOOD/4"x4" WOOD POSTS

NOTES

- MATERIALS:** THE SIGN SHALL BE MANUFACTURED FROM BACKING MATERIALS COMPOSED OF (1.) METAL-10 GA. STEEL OR 0.156" THICK FLAT SHEET ALUMINUM, (2.) 3/4" EXTERIOR TYPE FIR PLYWOOD.
THE SIGN POSTS SHALL BE (1.) FLANGED CHANNEL POSTS, 3 LBS. PER FOOT OR; (2.) 4"x4" COMMERCIAL GRADE, TREATED WOOD SIGN POSTS.
- COLOR:** THE FRONT, BACK, AND ALL EDGES OF THE SIGN SHALL BE PAINTED ONE COAT OF WHITE PRIMER TO BE FOLLOWED BY TWO COATS OF SEMI-GLOSS WHITE ENAMEL. ALL ENAMEL PRINTS SHALL BE OPAQUE AND OF EXTERIOR QUALITY.
WHITE: SIGN BLANK, BLACK: LEGEND
- LEGEND AND INTERLINE SPACING:** ALL LEGEND SHALL BE SERIES "C" ALPHABET AS IS SPECIFIED IN THE STANDARD ALPHABETS FOR HIGHWAY SIGNS PUBLICATION. INTERLINE SPACING SHALL BE AS SPECIFIED ON THE LAYOUT WITH EXCEPTION OF LINES 4 & 5. USE APPROPRIATE LETTER SERIES TO CENTER VARIABLE LENGTH PROJECT TITLE AND PROJECT LIMITS DESCRIPTION ON LINES 4 & 5 RESPECTIVELY. LEGEND SHALL BE BLACK ENAMEL.
- HARDWARE:** ALL BOLTS, NUTS, AND WASHERS SHALL BE ELECTROPLATED WITH ZINC OR CADMIUM. SEE DETAIL "A" AND "B".
- LOCATION OF SIGNS:** TWO (2) SHALL BE ERECTED WITHIN THE STREET RIGHT-OF-WAY AT LOCATIONS AS DESIGNATED ON THIS SHEET OR, AS DIRECTED BY THE FIELD ENGINEER. THE SIGN SHALL FACE APPROACHING TRAFFIC AND BE LOCATED SO AS NOT TO OBSCURE OR DETRACT FROM THE EFFECTIVENESS OF OTHER OFFICIAL STREET SIGNING AND MARKERS OR OBSTRUCT THE VISION OF MOTORISTS. SIGNS SHALL BE ERECTED IN ADVANCE OF ISSUING WORK ORDER.
- THE CONTRACTOR SHALL SUPPLY ALL SIGN CONSTRUCTION MATERIALS AND SHALL BE RESPONSIBLE FOR ITS FABRICATION, INSTALLATION, MAINTENANCE, AND REMOVAL.
- THE 14" DIA. CITY SEAL AND DECAL MAY BE PURCHASED FROM THE DEPARTMENT OF ENGINEERING, CITY OF WICHITA, FOR \$10.00 A SET.
- PRIOR TO SIGN FABRICATION: THE CONTRACTOR SHALL CONTACT THE CONSTRUCTION ENGINEER, DEPT. OF PUBLIC WORKS, TO OBTAIN THE REQUIRED INFORMATION FOR THE SIGN LEGEND.
- ALL TYPES OF WORK TO BE DONE ON THIS PROJECT AND SUBSEQUENT PROJECTS ARE TO BE SHOWN ON LINES 8, 9, AND 10 VERTICALLY, AND HORIZONTALLY AS DIMENSIONED ON LAYOUT. PROJ. COST WILL HAVE DOLLAR AMOUNT POSITIONED AS SHOWN ON LAYOUT.
- ADD TWO (2) PERMANENT SIGNS AT HILLSIDE BRIDGE AS APPROVED BY ENGINEER.



DO NOT SCALE: FOR INFORMATION ONLY

RT./LT. OF CENTERLINE	STATION	LOCATION



PROJECT CONSTRUCTION SIGN LAYOUT		
CITY ENGINEER		
JAMES L. ARMOUR, P.E., L.S.		
PROJECT NUMBER	OCA NUMBER	DATE
468-82473	660803	2007
CITY ENGINEER'S OFFICE		DESIGN
CITY HALL - SEVENTH FLOOR		ABC
455 NORTH MAIN STREET		DEF
WICHITA, KANSAS 67202-1620		SHEET
(316) 268-4501		35 OF 46
(316) 268-4114 FAX		