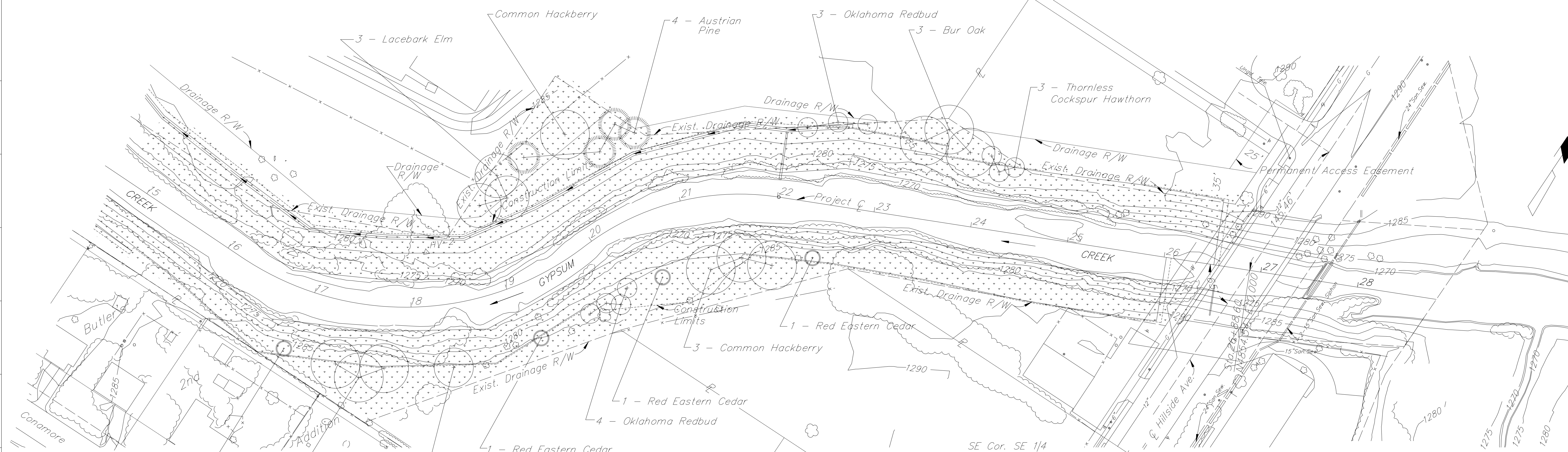


PLANT LIST

Quantity	Common Name	Botanical Name	Size and Condition
6	Bur Oak	<i>Quercus macrocarpa</i>	2 - 2-1/2" cal. BB
4	Common Hackberry	<i>Celtis occidentalis</i>	2 - 2-1/2" cal. BB
3	Lacebark Elm	<i>Ulmus parvifolia</i>	2 - 2-1/2" cal. BB
1	Osage Orange	<i>Maclura pomifera var. enermis (male)</i>	2 - 2-1/2" cal. BB
4	Austrian Pine	<i>Pinus nigra</i>	5 - 6' Ht. BB
3	Thornless Cocksbur Hawthorn	<i>Crataegus crusgalli inermis</i>	1 - 1-1/4" cal. BB
7	Oklahoma Redbud	<i>Cercis reniformis 'Oklahoma'</i>	1 - 1-1/4" cal. BB
4	EAstern Red Cedar	<i>Cercis reniformis 'Oklahoma'</i>	5 - 6' Ht. BB

1 Acre Area Shown plus all disturbed Area not including areas covered by pavement or an erosion control/turf reinforcement mat. See Specs. Sht. No. 37



SE Cor. SE 1/4 Section 3, T28S, R1E Thimble N2348.57, E10,000

LEGEND

- RED EASTERN CEDAR
- DECIDUOUS TREE LOCATION
- EVERGREEN TREE LOCATION
- AREA TO BE SEEDED

CITY OF WICHITA
JAMES ARMOUR, P.E., CITY ENGINEER
GYPSUM CREEK
LANDSCAPE PLAN
CITY OF WICHITA PROJECT NO. 468-82473
PB PARSONS BRINCKERHOFF
Wichita, Kansas
SCALE: _____ DATE: 10/31/2007 DWG No. 32158A

K:\32158A\Cadd\Sheets\Drainage\33 landscape.dgn
SURV. JG, CP, PLOT CADD DES. DR. TR. CKD. APP.