

BENCHMARKS:

BM #1: 3/4" Iron Pipe with Sedgwick County Cap in Concrete at the SW Cor., SW 1/4 Sec. 2, Twp. 27-S R-2-W. ELEV. = 1367.00 NAVD88

BM #2: "□" Cut on top of NW Wingwall of Bridge on 21st Street N. 27.3' North of Section Line 1283.7' E. of SW Cor., SW 1/4 Sec. 2, TWP. 27-S, R-2-W. ELEV. = 1365.87 NAVD88

BM #3: 60d Step Bench, SE Corner of Wooden Bridge, 42' N. and 13' W. of the SW Cor., Lot 1, Block B, Via Christi-West Campus Addition. ELEV. = 1363.52 NAVD88

Curve #1
Curve Data Based on Water Line
Rad. = 249' Delta = 37°00'24" Tangent = 83.33'
Arc = 160.82' L.C. = 158.05' Def./ft. = 6.90337 Min.

Station	Arc	Chord Lengths		
		6' Left	Def.	Total Def.
1+57.58	-	-	0'00"00"	0'00"00"
1+75.00	17.42'	17.00'	2'00"15"	2'00"15"
2+00.00	25.00'	24.39'	2'52"35"	4'52"50"
2+25.00	25.00'	24.39'	2'52"36"	7'45"26"
2+50.00	25.00'	24.39'	2'52"35"	10'38"01"
2+75.00	25.00'	24.39'	2'52"35"	13'30"36"
3+00.00	25.00'	24.39'	2'52"35"	16'23"11"
3+18.40	18.40'	17.95'	2'07"01"	18'30"12"

WL Sta 0+00, Begin Line 1 = BL Sta 0+72.00, 35' Lt. Remove Cap, Connect to Existing 12" Water Line and continue Line to the East. Deflect Pipe 3'16'27" Right.

WL Sta 1+57.58, Line 1 - PC = BL Sta 2+29.32, 26' Lt. Deflect Pipe 3'16'27" Left.

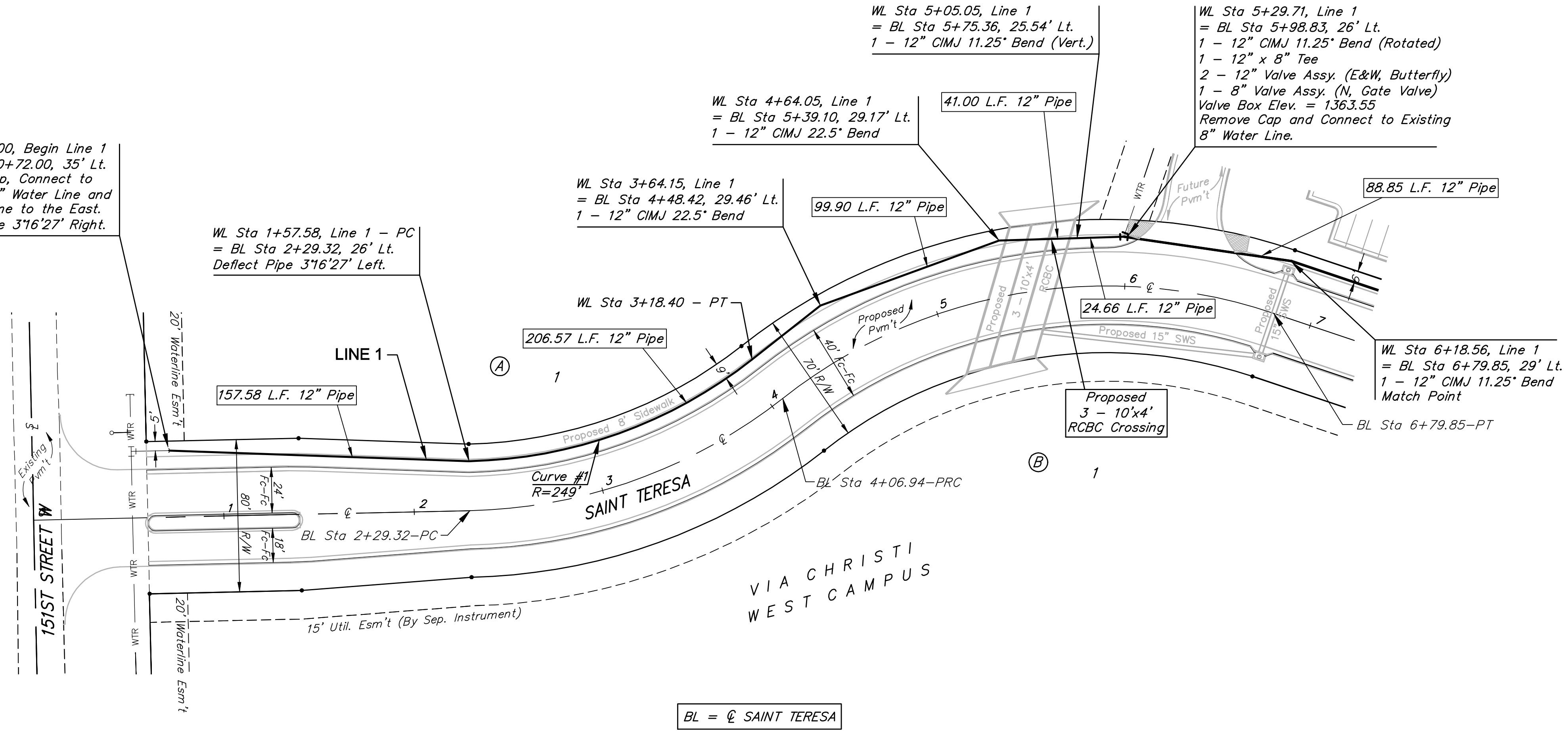
WL Sta 3+64.15, Line 1 = BL Sta 4+48.42, 29.46' Lt. 1 - 12" CIMJ 22.5° Bend

WL Sta 4+64.05, Line 1 = BL Sta 5+39.10, 29.17' Lt. 1 - 12" CIMJ 22.5° Bend

WL Sta 5+05.05, Line 1 = BL Sta 5+75.36, 25.54' Lt. 1 - 12" CIMJ 11.25° Bend (Vert.)

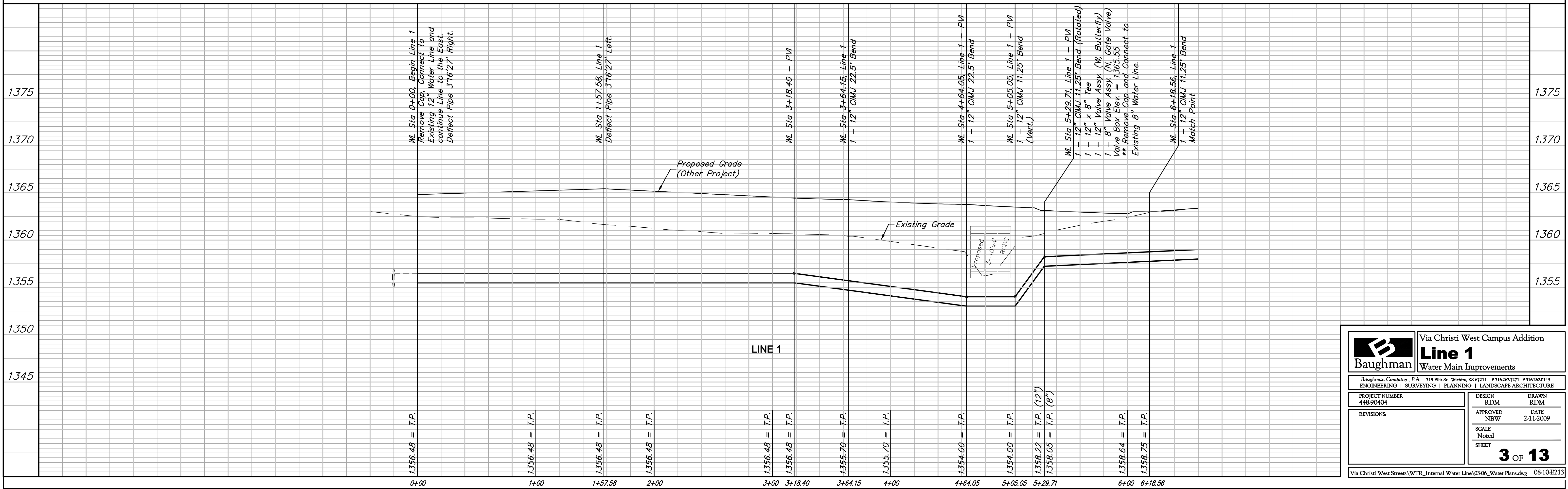
WL Sta 5+29.71, Line 1 = BL Sta 5+98.83, 26' Lt. 1 - 12" CIMJ 11.25° Bend (Rotated) 1 - 12" x 8" Tee 2 - 12" Valve Assy. (E&W, Butterfly) 1 - 8" Valve Assy. (N, Gate Valve) Valve Box Elev. = 1363.55 Remove Cap and Connect to Existing 8" Water Line.

WL Sta 6+18.56, Line 1 = BL Sta 6+79.85, 29' Lt. 1 - 12" CIMJ 11.25° Bend Match Point



Scale: 1" = 40' (Hor.)
1" = 5' (Vert.)
• = Iron

BL = ϕ SAINT TERESA



Via Christi West Campus Addition

Line 1

Water Main Improvements

Baughman Company, P.A. 315 Ellis St. Wichita, KS 67211 P 316-262-7771 F 316-262-0149
ENGINEERING | SURVEYING | PLANNING | LANDSCAPE ARCHITECTURE

PROJECT NUMBER 448-90404	DESIGN RDM	DRAWN RDM
APPROVED NBW	SCALE Noted	DATE 2-11-2009
REVISIONS:	3 OF 13	

Via Christi West Streets\WTR_Internal Water Line\03-06_Water Plans.dwg 08-10-E213