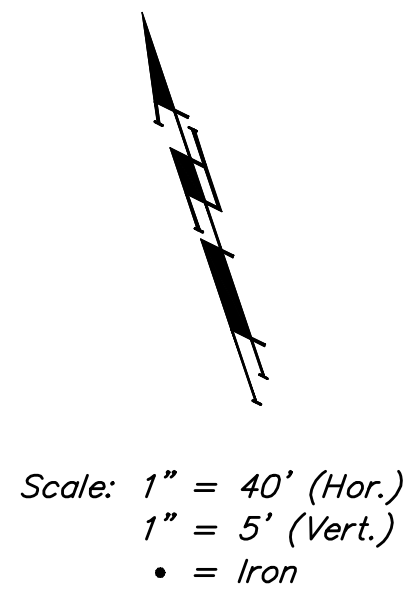
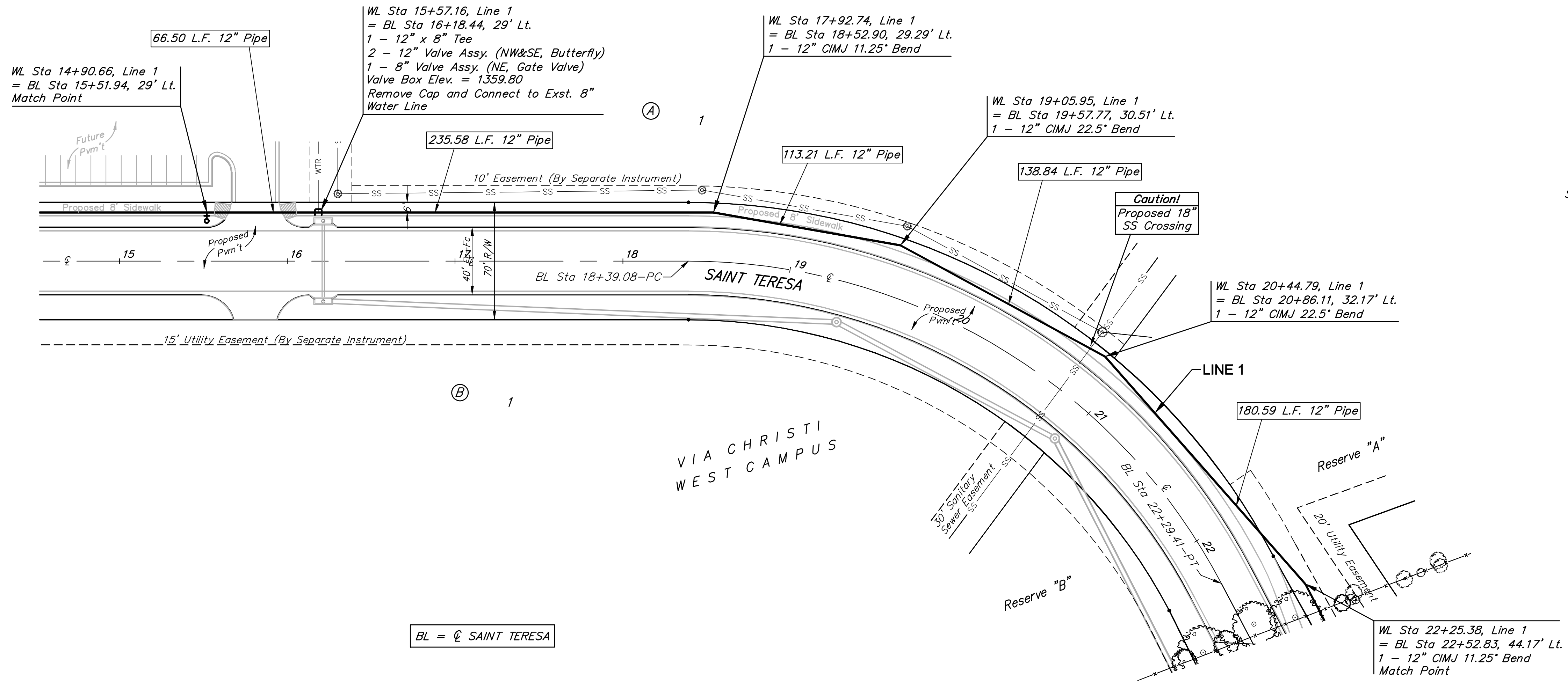


**BENCHMARKS:**

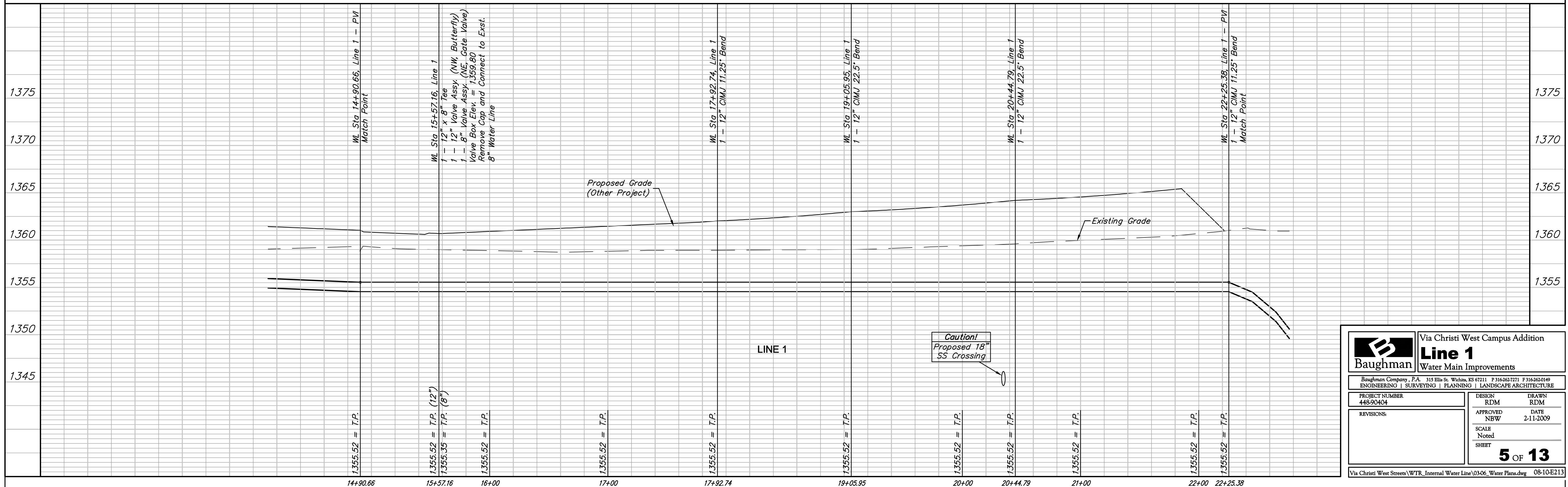
BM #1: 3/4" Iron Pipe with Sedgwick County Cap in Concrete at the SW Cor., SW 1/4, Sec. 2, Twp. 27-S R-2-W. ELEV. = 1367.00 NAVD88

BM #2: "□" Cut on top of NW Wingwall of Bridge on 21st Street N. 27.3' North of Section Line 1283.7' E. of SW Cor., SW 1/4, Sec. 2, TWP. 27-S, R-2-W. ELEV. = 1365.87 NAVD88

BM #3: 60d Step Bench, SE Corner of Wooden Bridge, 42' N. and 13' W. of the SW Cor., Lot 1, Block B, Via Christi-West Campus Addition. ELEV. = 1363.52 NAVD88



BL =  $\phi$  SAINT TERESA



**Baughman**

ENGINEERING | SURVEYING | PLANNING | LANDSCAPE ARCHITECTURE

Via Christi West Campus Addition

**Line 1**

Water Main Improvements

PROJECT NUMBER 448-90404		DESIGN RDM	DRAWN RDM
APPROVED NBW		DATE 2-11-2009	
REVISIONS:		SCALE Noted	SHEET 5 OF 13

Via Christi West Streets/WTR\_Internal Water Line/03-06\_Water Plans.dwg 08-10-E213