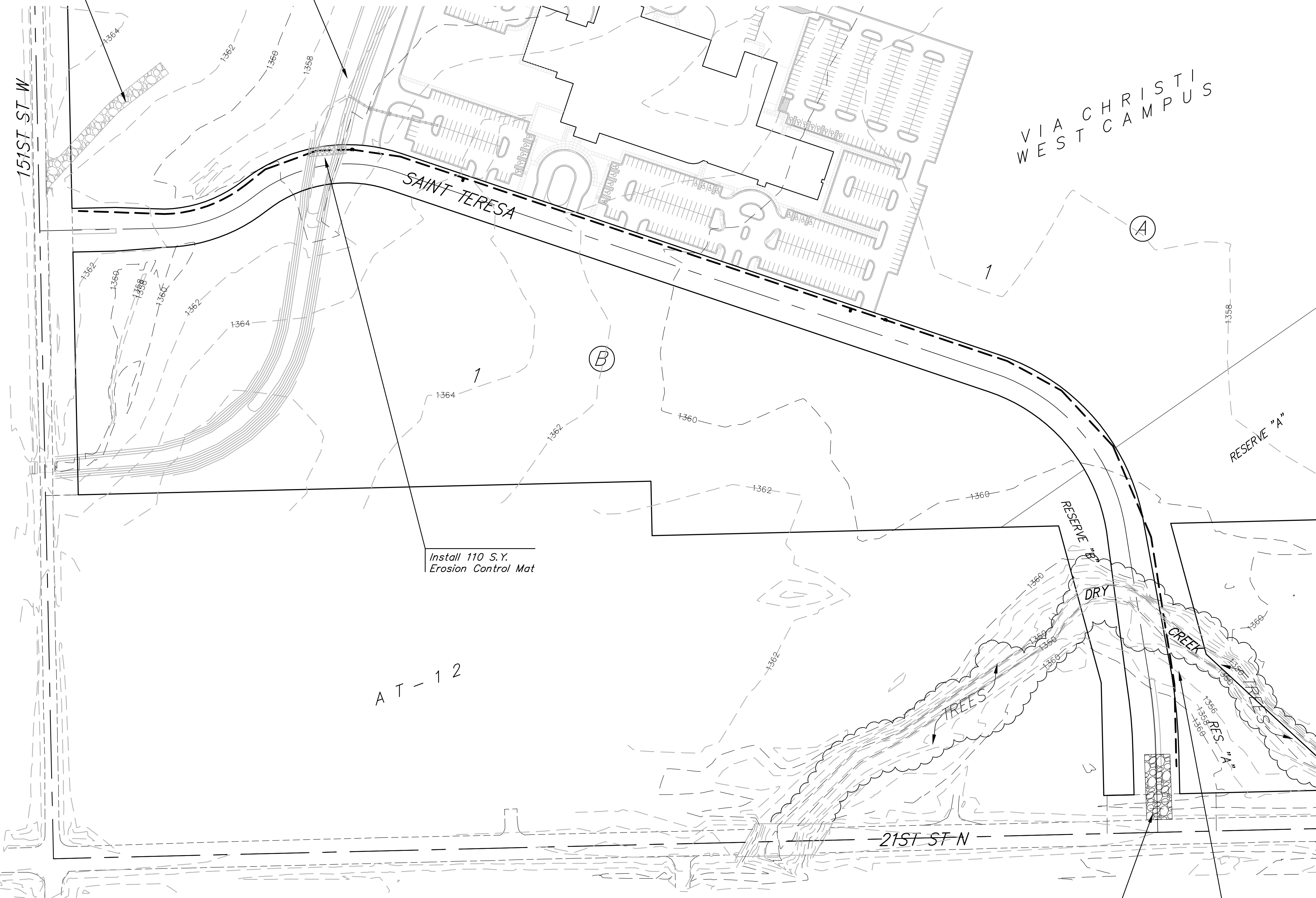


Maintain Existing Construction Entrance

Grassed Channel to Existing Detention Basin



Scale: 1" = 100'

Area where erosion control mat is installed shall be seeded and fertilized as follows:  
Seed: Kansas Premium Fescue Blend: 10 lbs./1000 sq. ft.  
Fertilizer: 12-24-12: 8 lbs./1000 sq. ft.  
 All other areas disturbed during construction shall be seeded at 300 lbs./acre with Rye Grass and mulched with prairie hay at 2 tons/acre immediately following construction in that area unless otherwise noted. All costs associated with seeding, mulching, and fertilizing shall be included in bid item "Project Seeding."

EROSION CONTROL MEASURE	UNITS	QUANTITY
CONSTRUCTION ENTRANCE	EA.	1
EROSION CONTROL MAT	S.Y.	110

QUANTITIES ARE FOR INFORMATION ONLY!  
 CONTRACTOR SHALL VERIFY QUANTITIES PER SPECIFIC ENGINEERING PLAN SHEET.

AT-12

Install Construction Entrance and temporary culvert

Maintain a Min. of 50' Vegetated Buffer between disturbed soil and Stream

	Via Christi West Campus	
	<b>Erosion Control</b> Water Main Improvements	
<small>Baughman Company, P.A. 315 Ellis St. Wichita, KS 67211 P 316-262-7271 F 316-262-0149          ENGINEERING   SURVEYING   PLANNING   LANDSCAPE ARCHITECTURE</small>		
PROJECT NUMBER <b>448-90404</b>	DESIGN RDM	DRAWN RDM
REVISIONS:	APPROVED NBW	DATE 2-11-2009
SCALE Noted		SHEET <b>7 OF 13</b>