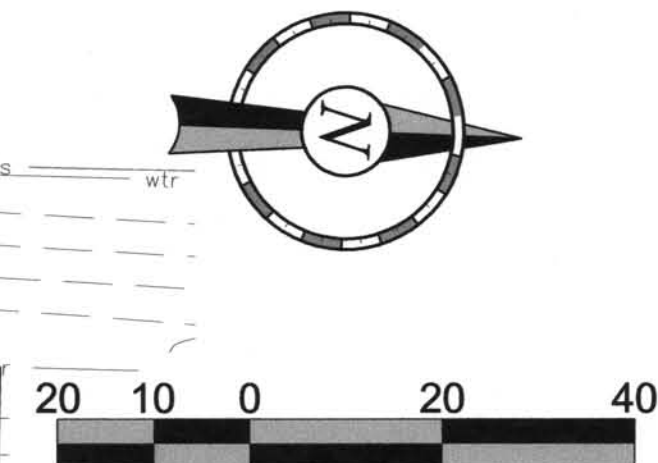
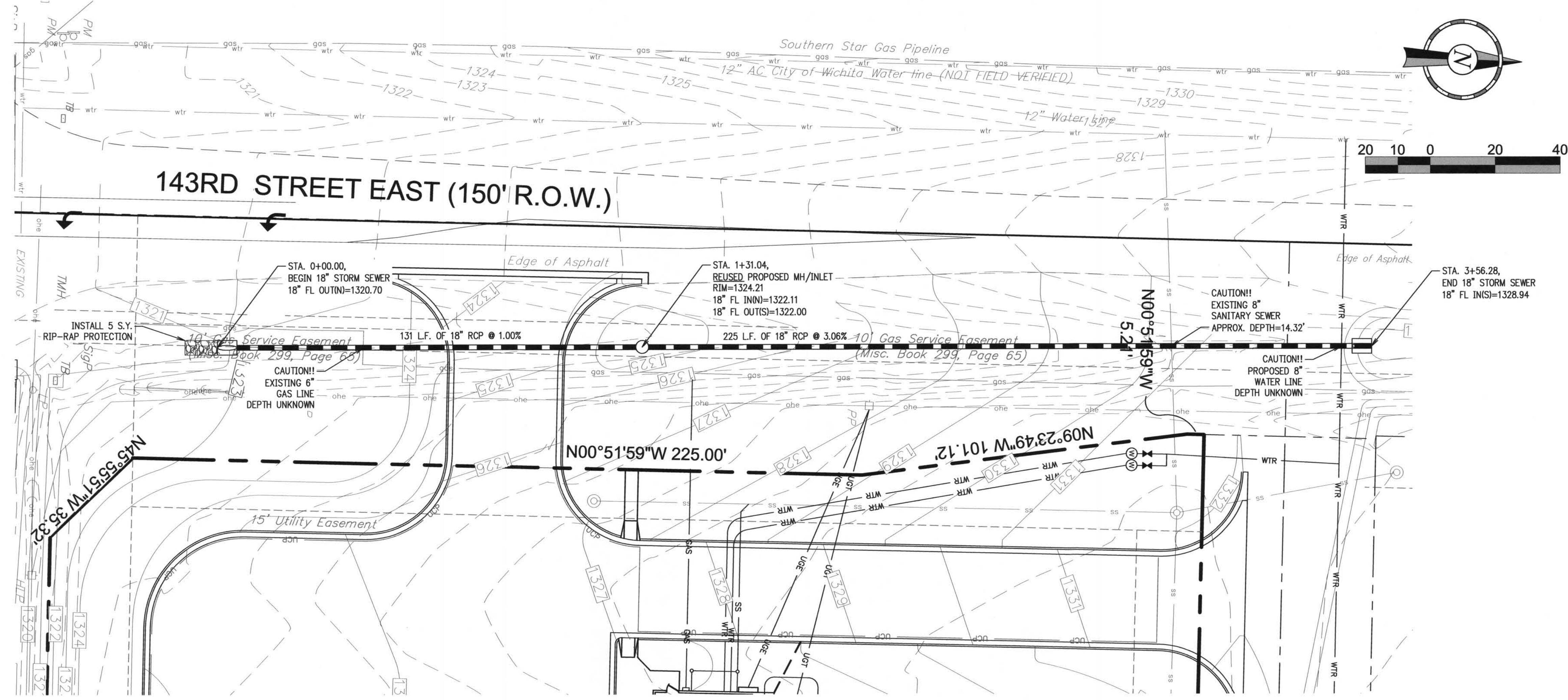


G:\QT_Folder_Wichita\Job Folder\083013-01\DWG\0316 Final Base11-17-08.dwg - Drainage P&P 1 Dec 08, 2008 - 10:33am



QuikTrip.
 4705 South 129th East Ave.
 Tulsa, OK 74134-7008
 P.O. Box 3475
 Tulsa, OK 74101-3475
 (918) 615-7700

GENERAL NOTES

1. ALL SANITARY SEWER IMPROVEMENTS INCLUDING THE ABANDONMENT AND/OR REMOVAL OF A PORTION OF THE EXISTING SANITARY SEWER SYSTEM, AS DIRECTED BY THE QT CONSTRUCTION MANAGER, SHALL BE PERFORMED IN ACCORDANCE WITH THE CITY OF WICHITA STANDARDS & SPECIFICATIONS. (REF. "PART 800 - WATER & SEWER" OF THE CITY SPECS.)

© COPYRIGHT
 1986 QUIKTRIP CORPORATION
 DESIGN PATENTS
 QUIKTRIP PLANS ARE THE EXCLUSIVE PROPERTY OF QUIKTRIP CORPORATION, TULSA, OKLAHOMA. THESE PLANS ARE PROTECTED IN THEIR ENTIRETY BY DOMESTIC AND INTERNATIONAL COPYRIGHT AND PATENT STATUTES. ANY UNAUTHORIZED USE, REPRODUCTION, PUBLICATION, DISTRIBUTION OR SALE IN WHOLE OR IN PART, IS STRICTLY FORBIDDEN.

SITE BENCHMARK
 "a" Chiseled on Traffic
 Signal Light Pole
 at NW corner of 143rd St & Kellogg Ave.
 Elevation=1318.61
 (NGVD 29)

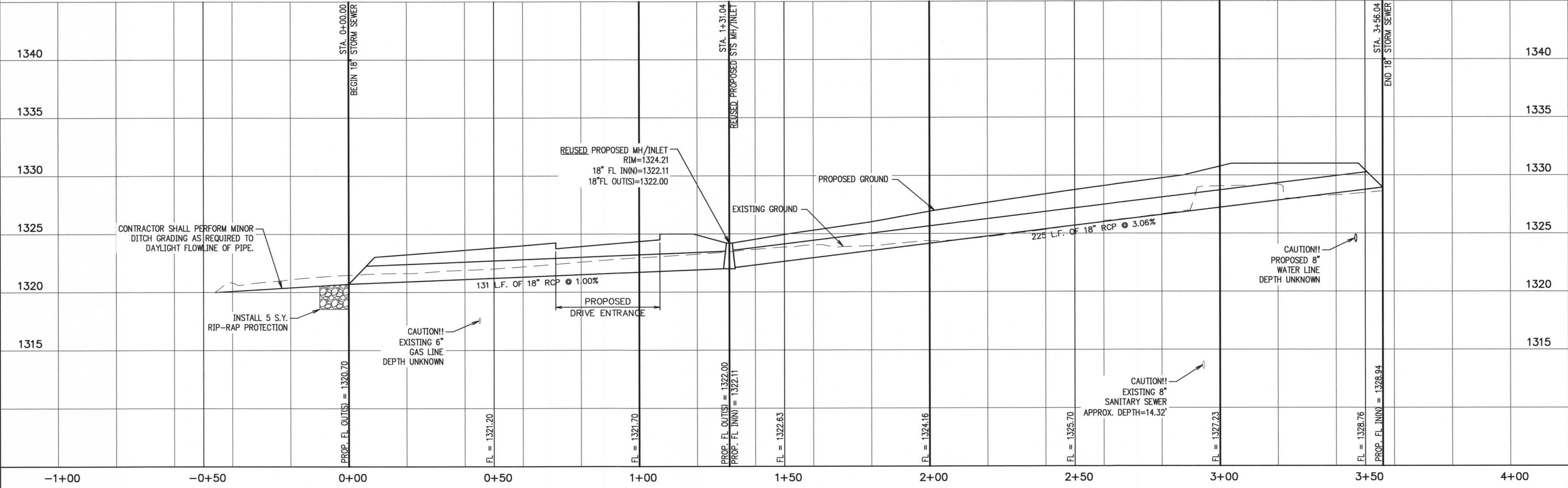
No.	Revision	Date

Crafton Tull Sparks
 8200 East 34th Street North, Bldg. 1600
 Suite 1603, Wichita, KS 67226
 316.634.6776 FAX: 316.634.6777
 www.craftontullsparks.com

architecture | engineering

STS 1 PLAN & PROFILE
 CONSTRUCTION CHANGE ORDER EXHIBIT

DRAWN BY: CKW	SHEET
DESIGNED BY: CKW	2
CHECKED BY: JCM	
ISSUE DATE: 12/08/08	
	OF 3



WICHITA, KANSAS

US HIGHWAY 54 & 143RD STREET EAST

QuikTrip Store No. : 316