

G:\Q1\106-0021 Wichita-KS\Drawings\Civil\316 City SWS.dwg - Drainage Jul 30, 2008 - 9:07am

EXISTING	PROPOSED	
	PERVIOUS	IMPERVIOUS
163,785.60 SF	0	60,112.80 SF

Pipe ID	Invert In (ft)	Invert Out (ft)	L (ft)	Slope S	Commercial D (in)	Pipe Type
P-1	21.99	21.62	74.6	0.5%	15	RCP
P-2	22.65	21.62	107.8	1.0%	18	RCP
P-3	21.62	20.00	322.0	0.5%	24	RCP
P-4	21.00	18.00	80.0	3.5%	18	RCP
P-5	20.00	18.64	209.7	2.6%	18	RCP
P-6	18.64	18.16	18.4	2.9%	18	RCP
P-7	18.64	18.41	18.0	0.6%	18	RCP
P-8	17.00	17.50	24.0	0.7%	24	RCP

See Sheet 10
See Sheet 11
Omitted
Omitted
Omitted

DRAINAGE AREA BASIN	INLET NO.	DRAINAGE AREA (AC)	C	REACH GRASS (ft)	REACH PAVING (ft)	SLOPE GRASS (%)	SLOPE PAVING (%)	Velocity Grass (fps)	Velocity Paving (fps)	Tc (Minutes)	H10 (ft/hr)	C100 (cfs)	% SLOPE AT INLET	SUM. CHRG. AT INLET (cfs)	DEPTH AT INLET (ft)	C100 INLET (cfs)	C100 BYPASS (cfs)	TO INLET	INLET DESIGN
A	a	2.03	0.36	500	0	2.3	0.00	1.10	0.00	7.58	9.2	6.7	SUMP	6.7	0.5	6.7	0.0	-	30" DRAIN BASIN
B (BUILDING)	-	0.10	0.80	0	0	0.0	0.00	0.00	0.00	5.00	10.2	1.0	-	-	-	-	-	-	-
C1	c1	0.47	0.86	0	253	0.0	2.64	0.00	3.00	1.41	10.2	4.2	SUMP	4.2	0.46	4.2	0.0	-	SINGLE GRATE CATCH BASIN
C2	c2	0.15	0.77	0	253	0.0	2.64	0.00	3.00	1.41	10.2	1.2	SUMP	1.2	0.04	1.2	0.0	-	C. OF WICHITA TYPE 1-A INLET
D (CANOPY)	-	0.18	0.80	0	0	0.0	0.00	0.00	0.00	5.00	10.2	1.7	-	-	-	-	-	-	-
E	e	0.51	0.80	0	324	0.0	2.48	0.00	3.00	1.80	10.2	4.7	SUMP	4.7	0.50	4.7	0.0	-	SINGLE GRATE CATCH BASIN
F	f	0.11	0.35	39	0	2.6	0.00	1.30	0.00	0.50	10.2	0.4	-	-	-	-	-	-	-
G	g	0.80	0.35	192	319	3.3	0.50	1.30	1.40	6.28	9.9	3.1	SUMP	3.1	0.19	3.1	0.0	-	MANHOLE

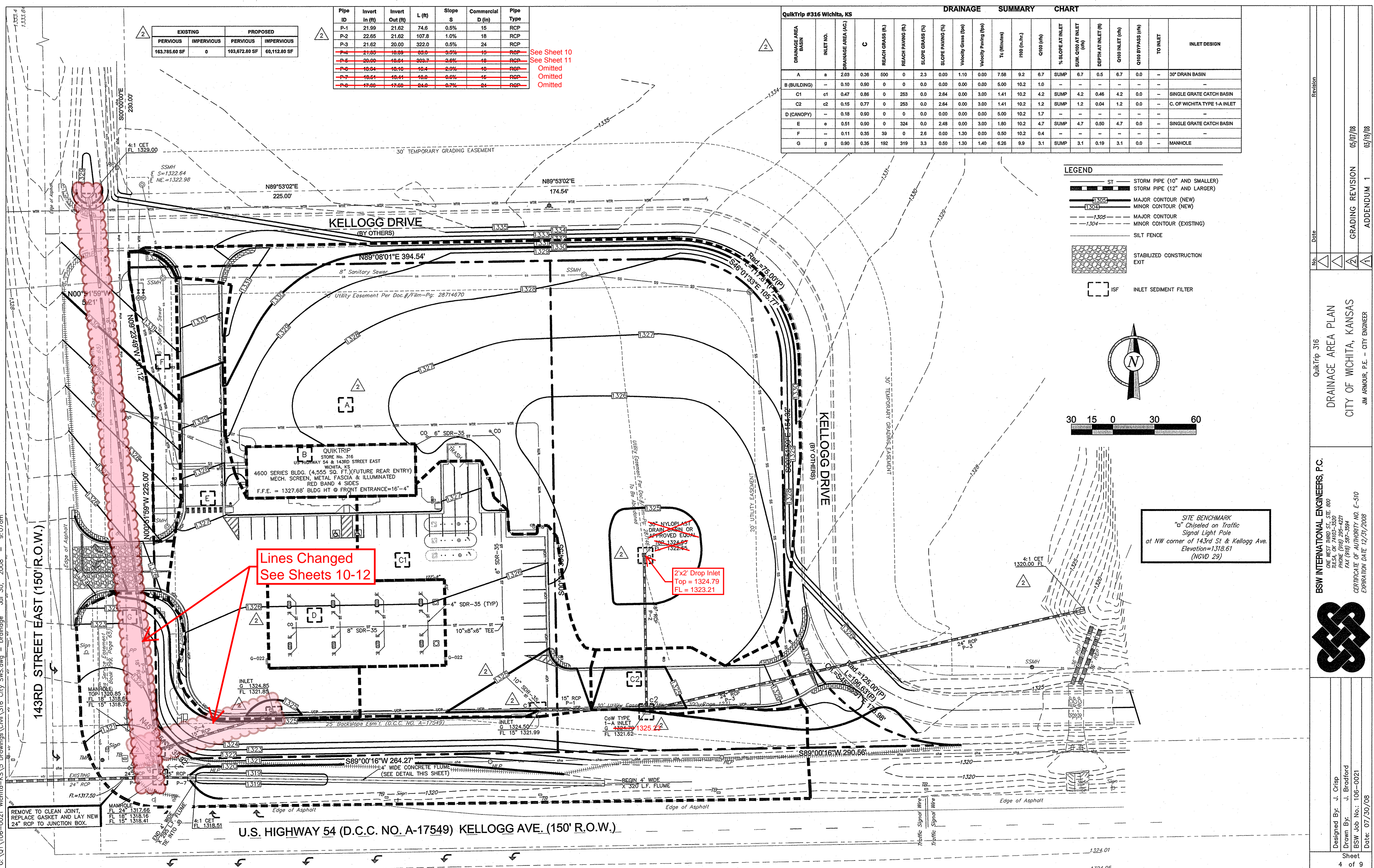
LEGEND

- ST - STORM PIPE (10" AND SMALLER)
- ST - STORM PIPE (12" AND LARGER)
- 1305 - MAJOR CONTOUR (NEW)
- 1304 - MINOR CONTOUR (NEW)
- 1305 - MAJOR CONTOUR (EXISTING)
- 1304 - MINOR CONTOUR (EXISTING)
- SILT FENCE
- STABILIZED CONSTRUCTION EXIT
- ISF - INLET SEDIMENT FILTER

Scale
30 15 0 30 60

North Arrow

SITE BENCHMARK
"c" Chiseled on Traffic Signal Light Pole at NW corner of 143rd St & Kellogg Ave. Elevation=1318.61 (NGVD 29)



Revision
Date
No.

QuikTrip 316
DRAINAGE AREA PLAN
CITY OF WICHITA, KANSAS
JIM ARMOUR, P.E. - CITY ENGINEER

BSW INTERNATIONAL ENGINEERS, P.C.
ONE WEST THIRD ST., STE. 800
WICHITA, KANSAS 67202
PHONE (616) 942-3330
FAX (616) 942-3394
CERTIFICATE OF AUTHORITY NO. E-510
EXPIRATION DATE 12/31/2008

Designed By: J. Crisp
Drawn By: J. Bradford
BSW Job No.: 106-0021
Date: 07/30/08

Sheet
4 of 9