

Benchmark:
1\"/>

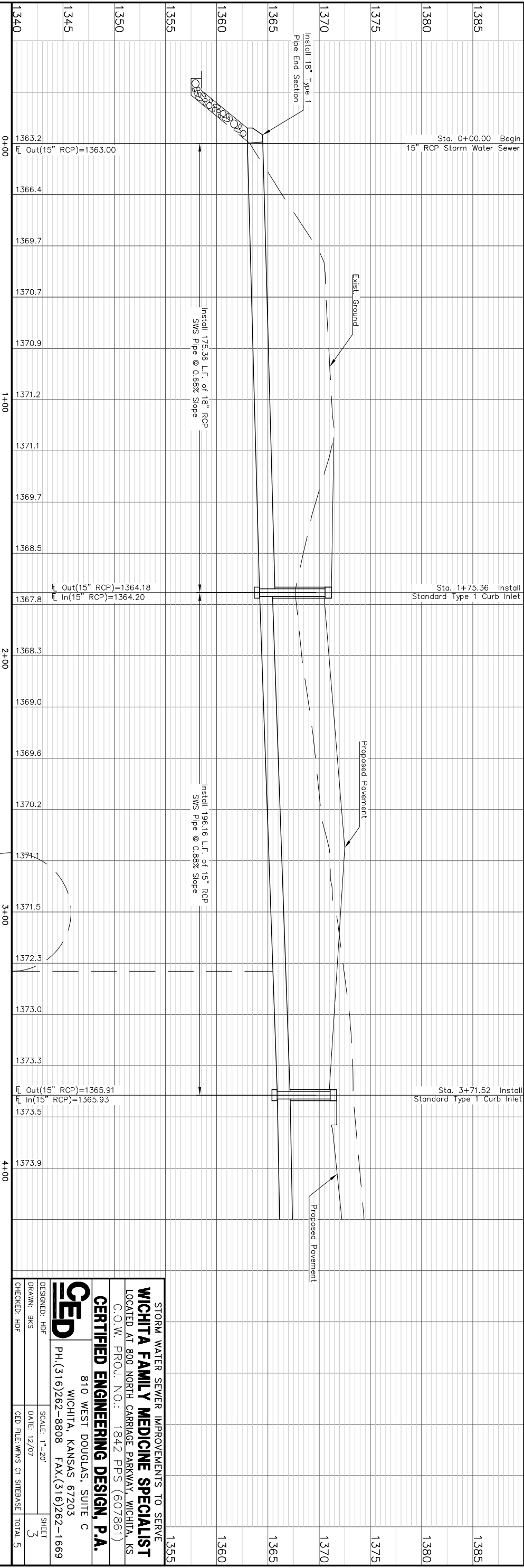
HORIZONTAL CONTROL POINTS

C.P. NO. 1	N 937.09 E 2196.86	S Corner of Property, 3/8\"/>
C.P. NO. 2	N 1285.16 E 2419.48	NE Corner of Property, 1/2\"/>

Built as Planned. No Changes.

UTILITIES SHOWN REPRESENT THE BEST INFORMATION AVAILABLE FOR DESIGN. ADDITIONAL UTILITIES MAY BE PRESENT ON THIS PROJECT. THE CONTRACTOR SHALL BE RESPONSIBLE FOR DETERMINING THE EXACT LOCATION, DEPTH AND SIZE OF ALL UNDERGROUND UTILITIES PRIOR TO CONSTRUCTION. THE CONTRACTOR SHALL BE LIABLE FOR ANY DAMAGE CAUSED BY THE FAILURE TO DO SO.

STORM WATER SEWER IMPROVEMENTS



STORM WATER SEWER IMPROVEMENTS TO SERVE
WICHITA FAMILY MEDICINE SPECIALIST
 LOCATED AT 800 NORTH CARRIAGE PARKWAY, WICHITA, KS
 C.O.W. PROJ. NO.: 1842 PPS (607861)

CERTIFIED ENGINEERING DESIGN, P.A.

810 WEST DOUGLAS, SUITE C
 WICHITA, KANSAS 67203
 PH. (316)262-8808 FAX. (316)262-1669

DESIGNED: HDP
 DRAWN: BKS
 CHECKED: HDP

SCALE: 1"=20'
 DATE: 12/07
 SHEET: 3
 CHECKED: HDP
 TOTAL: 5

