

GENERAL NOTES

ALL ELEVATIONS SHOWN ARE BASED ON MEAN SEA LEVEL DATUM.

1. CONTRACTOR WILL BE REQUIRED TO PROVIDE A MINIMUM ADVANCE NOTICE OF SEVENTY-TWO (72) HOURS EXCLUDING WEEKENDS AND HOLIDAYS TO UTILITY COMPANIES PRIOR TO STARTING ANY EXCAVATION AS FOLLOWS:

KANSAS ONE CALL 1-800-344-7233 OR 687-2470 (LOCAL WICHITA)

THE CONTRACTOR MUST NOTIFY THE FOLLOWING IN CASE OF AN EMERGENCY:

COX COMMUNICATIONS 316-262-0661
 AT&T 1-800-670-0390
 KANSAS GAS SERVICE 1-800-482-4950
 WESTAR ENERGY 316-383-8600
 CITY OF WICHITA WATER & SEWER DEPARTMENT 316-268-4555

THE CONTRACTOR SHALL NOTIFY PIPELINE COMPANIES AT LEAST 24 HOURS IN ADVANCE OF ANY WORK BEING PERFORMED ACROSS AND/OR ADJACENT TO PIPELINES.

2. INTERURBAN TRAFFIC GENERATED OUTSIDE THE PROJECT AREA IS NOT TO BE CARRIED THROUGH CONSTRUCTION. LOCAL RESIDENTIAL TRAFFIC GENERATED WITHIN THE PROJECT AREA IS TO BE CARRIED THROUGH CONSTRUCTION AS FURTHER PROMULGATED BY PROJECT SPECIAL PROVISIONS.

3. UTILITY SERVICE LINES, POLES, VALVE BOXES, METERS, ETC. ARE TO BE ADJUSTED AS NECESSARY BY OTHERS PRIOR TO CONSTRUCTION UNLESS THE PLANS SPECIFICALLY CALL FOR THEIR ADJUSTMENT BY THE CONTRACTOR OR UNLESS THE PLANS SPECIFICALLY IDENTIFY A UTILITY TO BE ADJUSTED BY ITS OWNER DURING CONSTRUCTION. EXISTING UTILITIES AND THEIR LOCATION, AS SHOWN ON THE PLANS, REPRESENT THE BEST INFORMATION OBTAINABLE FOR DESIGN. THE PLAN LOCATIONS ARE NOT GUARANTEED AND ADDITIONAL UTILITIES MAY ALSO BE ENCOUNTERED. THE CONTRACTOR WILL BE REQUIRED TO WORK AROUND EXISTING UTILITIES WITHIN THE RIGHT-OF-WAY WHICH DO NOT CONFLICT WITH PROPOSED CONSTRUCTION.

4. RUBBLE FROM THE REMOVAL OF MISCELLANEOUS STRUCTURES AND EXCESS EXCAVATION WHICH IS TO BE WASTED SHALL BE DISPOSED OF ON SITES TO BE PROVIDED BY THE CONTRACTOR. THESE SITES SHALL BE APPROVED BY THE ENGINEER AS TO SUITABILITY, APPEARANCE, AND SITE LOCATION. LOCATIONS, THAT IN THE OPINION OF THE ENGINEER, WILL LEAVE AN UNSIGHTLY APPEARANCE, WILL NOT BE APPROVED. ALL DISPOSAL SITES MUST BE APPROVED BY THE KANSAS DEPARTMENT OF HEALTH AND ENVIRONMENT. MATERIAL EITHER STOCKPILED OR DISPOSED OF IN A FLOODPLAIN WOULD REQUIRE A KANSAS STATE BOARD OF AGRICULTURE PERMIT. ANY MATERIALS DUMPED IN WATERS OF THE UNITED STATE OR WETLANDS IS SUBJECT TO U.S. CORPUS OF ENGINEERS PERMITTING REGULATIONS. ANY MATERIAL BURIED OR STOCKPILED BEYOND APPROVED CONSTRUCTION LIMITS WOULD REQUIRE ADDITIONAL ARCHAEOLOGICAL INVESTIGATIONS UNLESS BURIED IN A PREVIOUSLY APPROVED BORROW LOCATION.

5. TREES AND SHRUBS IN PUBLIC RIGHT-OF-WAY WHICH ARE IN DIRECT CONFLICT WITH PROPOSED NEW CONSTRUCTION SHALL BE REMOVED BY THE CONTRACTOR WITH THE ENGINEER'S APPROVAL. TREES AND SHRUBS WHICH ARE NOT IN DIRECT CONFLICT WITH PROPOSED NEW CONSTRUCTION SHALL BE SAVED AND PROTECTED FROM DAMAGE.

6. THE CONTRACTOR SHALL BE RESPONSIBLE FOR PRESERVING PROPERTY IRONS. THE CONTRACTOR WILL BE REQUIRED TO REESTABLISH ANY PROPERTY IRONS WHICH ARE DAMAGED OR DESTROYED BY HIS CONSTRUCTION OPERATIONS. SUCH IRONS SHALL BE REESTABLISHED BY A LICENSED LAND SURVEYOR IN ACCORDANCE WITH STATE LAWS.

7. THE CONTRACTOR SHALL GIVE ALL PROPERTY OWNERS AND/OR TENANTS OF DEVELOPED PROPERTY DIRECTLY ADJACENT TO THE CONSTRUCTION OF THIS PROJECT A MINIMUM OF TEN(10) DAYS ADVANCE NOTICE PRIOR TO START OF CONSTRUCTION.

8. THE CONTRACTOR SHALL ADJUST WATER VALVE BOXES, WATER METER BOXES AND FIRE HYDRANTS AS NOTED IN THE PLANS AND AS DIRECTED BY THE ENGINEER. MATERIALS, EQUIPMENT, AND LABOR REQUIRED FOR THE ADJUSTMENT OF WATER METER AND VALVE BOXES AND FIRE HYDRANTS WILL NOT BE PAID FOR DIRECTLY BUT WILL BE CONSIDERED SUBSIDIARY TO OTHER ITEMS OF WORK IN THE CONTRACT. THE WATER DEPARTMENT SHALL FIELD LOCATE WATER VALVES ONE TIME DURING CONSTRUCTION WHEN REQUESTED BY THE CONTRACTOR. IT SHALL BE THE CONTRACTOR'S RESPONSIBILITY TO PRESERVE SUCH FIELD LOCATIONS DURING THE CONSTRUCTION PROCESS. WATER VALVES, WATER VALVE BOXES, OR FIRE HYDRANTS DAMAGED DURING CONSTRUCTION SHALL BE REPAIRED BY THE CONTRACTOR AT HIS OWN EXPENSE.

9. THE CONTRACTOR MUST EXAMINE THE CONSTRUCTION SITE PRIOR TO BIDDING AND BE SATISFIED AS TO THE WORK SHOWN FOR COMPLETION. AFTER BIDS HAVE BEEN RECEIVED, THE CONTRACTOR SHALL NOT ASSERT THAT THERE WAS A MISUNDERSTANDING OF THE QUANTITIES OF WORK OR OF THE NATURE FOR THE WORK TO BE COMPLETED.

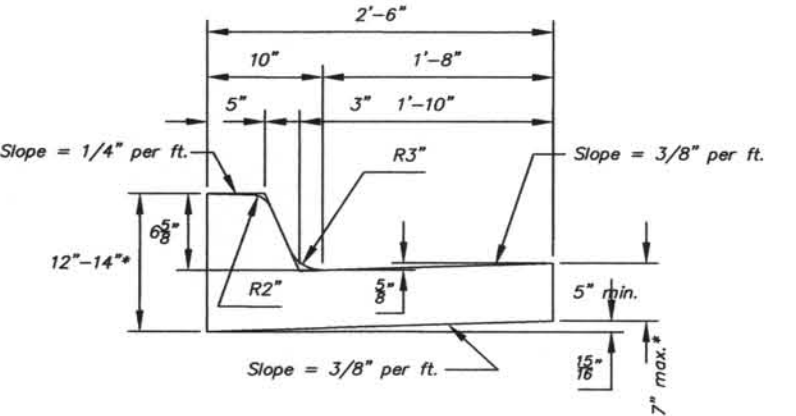
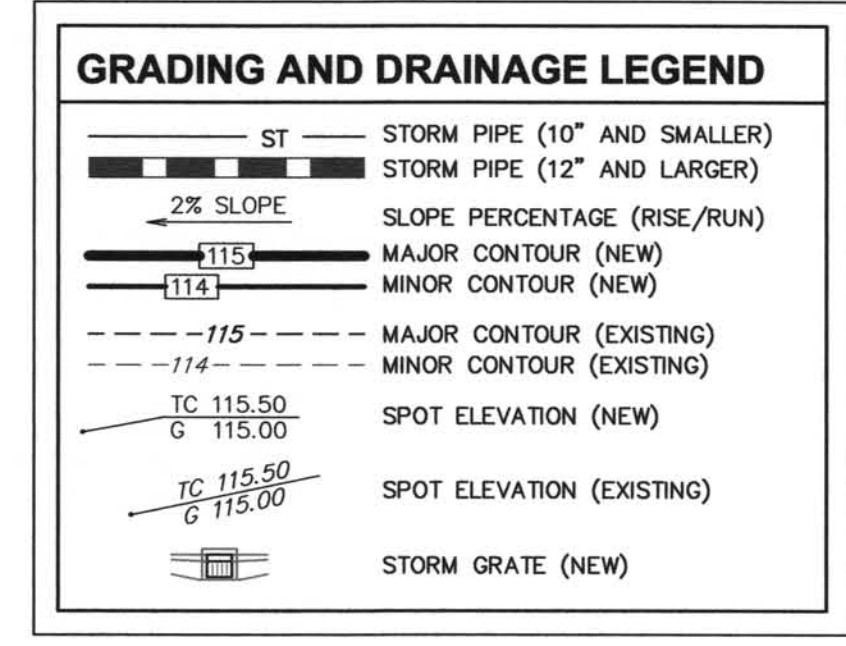
10. CONTRACTOR SHALL NOT START WORK ON THE PROJECT UNTIL THE PROJECT INSPECTOR IS ASSIGNED TO THE PROJECT AND IS PRESENT ON THE SITE. ANY WORK DONE WITHOUT INSPECTION WILL BE REQUIRED TO BE UNCOVERED FOR INSPECTION.

11. ALL LAWN/TURF AREAS DISTURBED BY CONSTRUCTION OF THE PROPOSED IMPROVEMENTS SHALL BE RESTORED WITH THE SAME GRASS AS EXISTING. RESTORATION OF DISTURBED AREAS SHALL INCLUDE, BUT NOT LIMITED TO, TOP SOIL PREPARATION, FERTILIZING, SEEDING, MULCHING (ALL SEEDING AREAS, OUTSIDE THE LIMITS OF EROSION MAT PLACEMENT), AND/OR RESEEDING, AND INSTALLATION OF EROSION CONTROL MAT. ALL SEEDING WORK SHALL BE IN ACCORDANCE WITH THE CITY OF WICHITA STANDARD SPECIFICATIONS AND THE CITY OF WICHITA ADMINISTRATIVE REGULATIONS NO. AR 6.5 WHICH GOVERNS CLEANUP AND RESTORATION OR REPLACEMENT FOLLOWING CONSTRUCTION.

12. THE CONTRACTOR SHALL PROVIDE TRAFFIC CONTROL IN ACCORDANCE WITH THE CURRENT ADDITION OF THE MANUAL OF UNIFORM TRAFFIC CONTROL DEVICES (MUTCD) TO ENSURE A SAFE WORK ZONE FOR THE TRAVELING PUBLIC.

13. ALL CONSTRUCTION AND MATERIALS, UNLESS OTHERWISE NOTED, TO COMPLY WITH CITY OF WICHITA SPECIFICATIONS AND STANDARDS.

ALL DODGE AVENUE PAVEMENT REPAIR INCLUDING CURB & GUTTER SHALL BE IN ACCORDANCE WITH THE CITY OF WICHITA'S STANDARD SPECIFICATIONS, SECTION 511.



BENCHMARK (CITY DATUM):
 CITY OF WICHITA BENCHMARK DISC IN SIDEWALK ADJACENT TO THE NORTHWEST CORNER OF A TRAFFIC SIGNAL POLE BASE ON SOUTHEAST CORNER OF SENECA AND DOUGLAS, 37' SOUTH AND 47' EAST OF CENTERLINE SENECA AND CENTERLINE DOUGLAS.
 ELEV.=113.12 (CITY OF WICHITA DATUM + 1187.4 = NGVD 29)

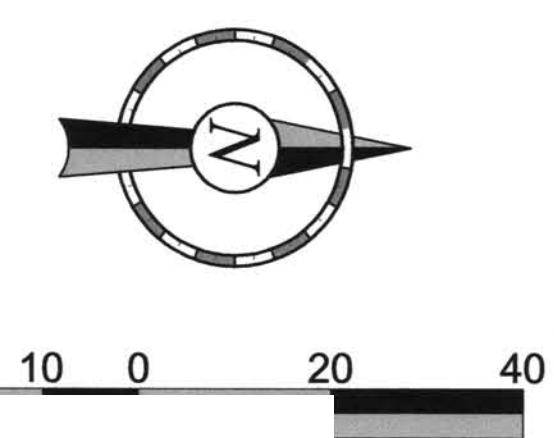
STREET PAVING IMPROVEMENTS TO DODGE AVENUE

BEGINNING AT THE NORTH LINE OF DOUGLAS AVENUE PAVEMENT TO A POINT 250 L.F. NORTH AS-BUILTS

WICHITA, SEDGWICK COUNTY, KANSAS

CONTRACTOR: DONDLINGER & SONS
 INSPECTOR: BRIAN BLOYD, SCHWAB-EATON
 PDF BY: BDB 3/12/09

JAMES L. ARMOUR, P.E., CITY ENGINEER
 SEPTEMBER 2008

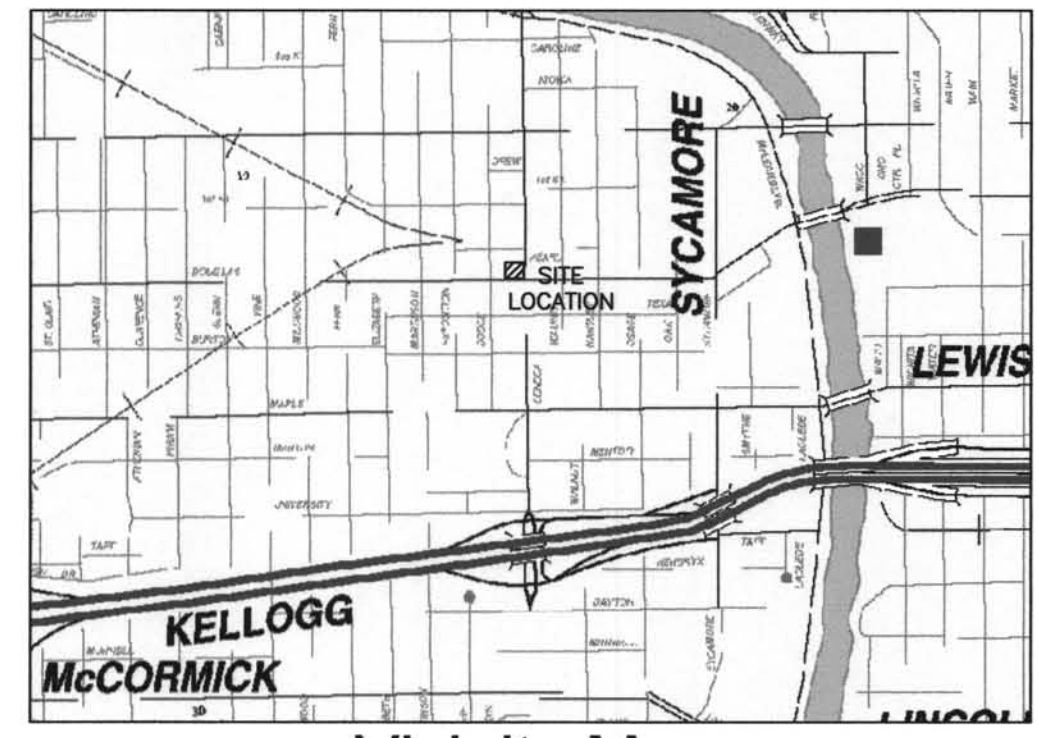


APPROVED AS NOTED BY CITY ENGINEER OF WICHITA

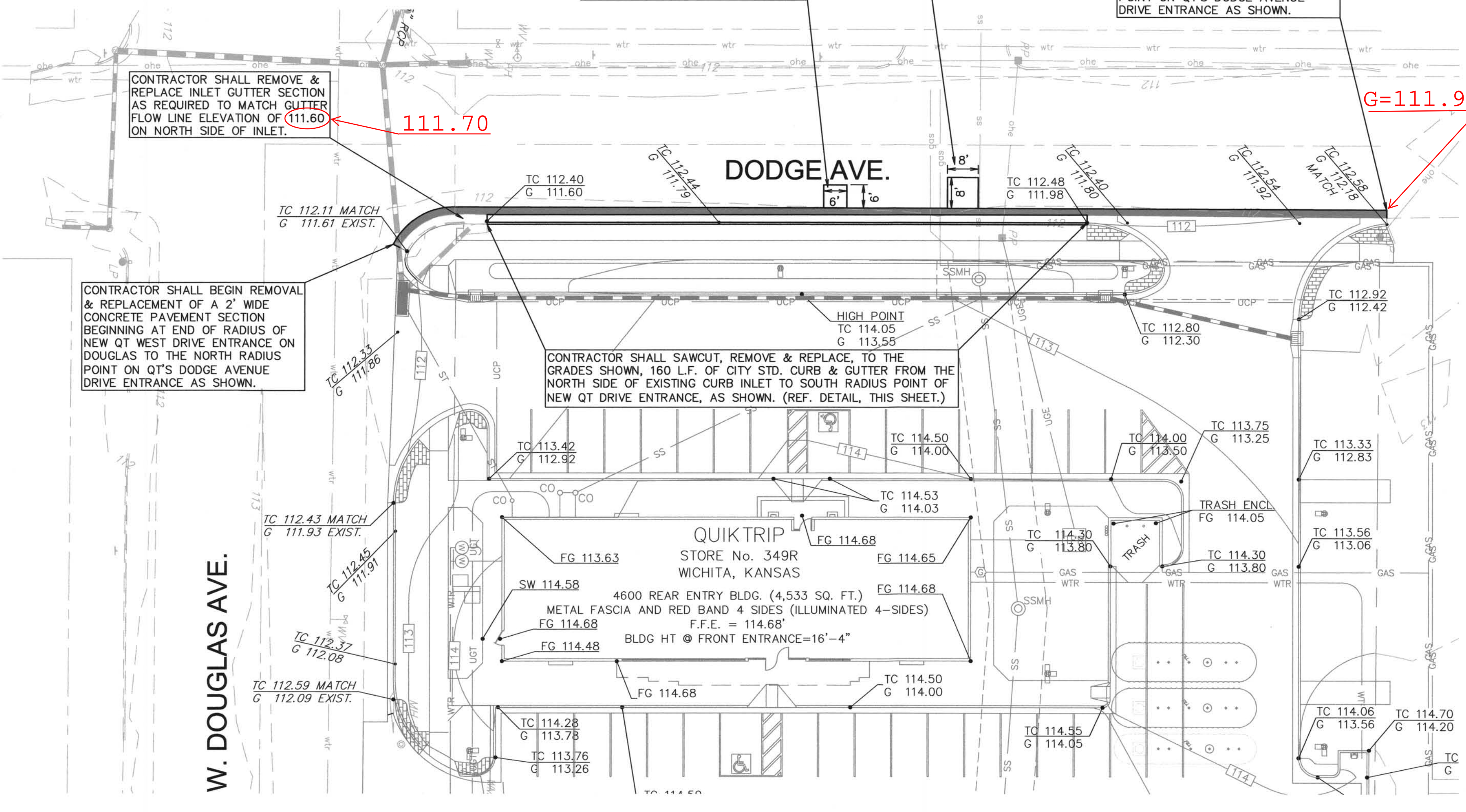
SANITARY SEWERS _____
 STORM SEWERS _____
 DRIVEWAY APPROACHES _____
 WATER MAINS _____
 PAVING *Julianne Kallman 9/4/08*

NOTE TO CONTRACTOR

INSPECTION AND TESTING FOR THIS PROJECT IS TO BE PROVIDED BY A LICENSED CONSULTING ENGINEERING FIRM UNDER CONTRACT WITH THE OWNER/DEVELOPER. SAID INSPECTION TO BE IN ACCORDANCE WITH THE CITY OF WICHITA STANDARD CONSTRUCTION ENGINEERING PRACTICES AND CERTIFIED BY A LICENSED PROFESSIONAL ENGINEER. NO WORK SHALL BE PERFORMED IN DEDICATED EASEMENTS OR THE PUBLIC RIGHT-OF-WAY BY THE CONTRACTOR WITHOUT SUCH INSPECTION NOR SHALL ANY WORK BE COMMENCED IN DEDICATED EASEMENTS OR PUBLIC RIGHT-OF-WAY WITHOUT WRITTEN AUTHORIZATION BY THE CITY ENGINEER.



SITE CIVIL PLANS		SS & SWS PRIVATE PROJECT PLANS	
1	COVER SHEET	16	COVER SHEET
2	SITE SURVEY	17	SITE PLAN
3	DEMOLITION	18	SANITARY SEWER PLAN/PROFILE
4	SITE PLAN	19	STORM WATER SEWER 1 PLAN/PROFILE
5	GRADING	20	STORM WATER SEWER 2 PLAN/PROFILE
6	ADA GRADING COMPLIANCE PLAN	21	EROSION CONTROL PLAN-PHASE 1
7	UTILITY PLAN	22	EROSION CONTROL PLAN-PHASE 2
8	LANDSCAPING PLAN	23	CITY OF WICHITA STD. DRIVE INLET DETAIL
9	PAVING PLAN	24	QUIKTRIP DRAINAGE STRUCTURE DETAILS
10	LANDSCAPING DETAILS	25	CITY OF WICHITA STD. DRIVE INLET DETAIL
11	MISC. SITE DETAILS 1	26	EROSION CONTROL DETAIL SHEET 1
12	MISC. SITE DETAILS 2	27	EROSION CONTROL DETAIL SHEET 2
13	PAVING DETAILS	28	EROSION CONTROL DETAIL SHEET 3
14	TRENCHING DETAILS 1	29	EROSION CONTROL DETAIL SHEET 4
15	TRENCHING DETAILS 2	30	EROSION CONTROL DETAIL SHEET 5
		PAVING PRIVATE PROJECT PLANS	
		31	PAVING PLAN



GENERAL NOTES

- ALL DRIVE ENTRANCES SHALL BE CONSTRUCTED OF 8" THICK CONCRETE PAVEMENT WITH 6"x12" W4x4x4 WELDED WIRE FABRIC REINFORCEMENT WITHIN THE STREET RIGHT-OF-WAY IN ACCORDANCE WITH THE CITY OF WICHITA SPECIFICATIONS FOR PRIVATE DRIVEWAYS.
- A WICHITA LICENSED AND BONDED CONCRETE CONTRACTOR SHALL OBTAIN A CURB CUT PERMIT FROM THE ENGINEERING DEPARTMENT AND SHALL INSTALL THE ABOVE MENTIONED DRIVE APPROACHES ON DODGE, DOUGLAS & SENECA STREETS.
- CONTRACTOR SHALL COORDINATE WITH QT PROJECT MANAGER IF ADDITIONAL DODGE AVENUE PAVEMENT REMOVAL BEYOND THE PROPOSED 2' WIDTH IS REQUIRED FOR GRADING PURPOSES.
- PER SECTION 511 OF THE C.O.W. STD. SPECS. NEW CONCRETE PAVEMENT WILL BE THE SAME THICKNESS AS EXISTING PAVEMENT TO BE REPLACED EXCEPT SUCH THICKNESS WILL NOT BE LESS THAN 6 INCHES.

No.	Revision	Date

Crafton Tull Sparks
 8200 East 34th Street North, Bldg. 1600
 Suite 1603, Wichita, KS 67226
 316.634.6776 FAX: 316.634.6777
 www.craftontullsparks.com

architecture | engineering

PAVING PLAN

DRAWN BY: CKW
 DESIGNED BY: CKW
 CHECKED BY: JCM
 ISSUE DATE: 08/29/08

SHEET
31
 OF 31

G:\QT_Folder\Wichita\Job_Folder\083007-00\ENG\DWG\0349_Paving Priv. Proj. Sep 04, 2008 - 2:13pm

112 WEST DOUGLAS AVE. QuikTrip Store No. : 349 WICHITA, KANSAS