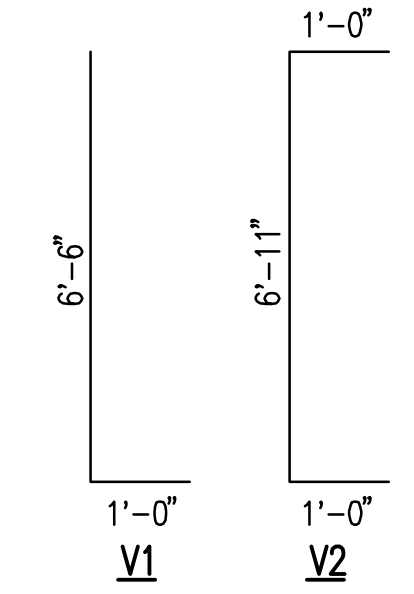
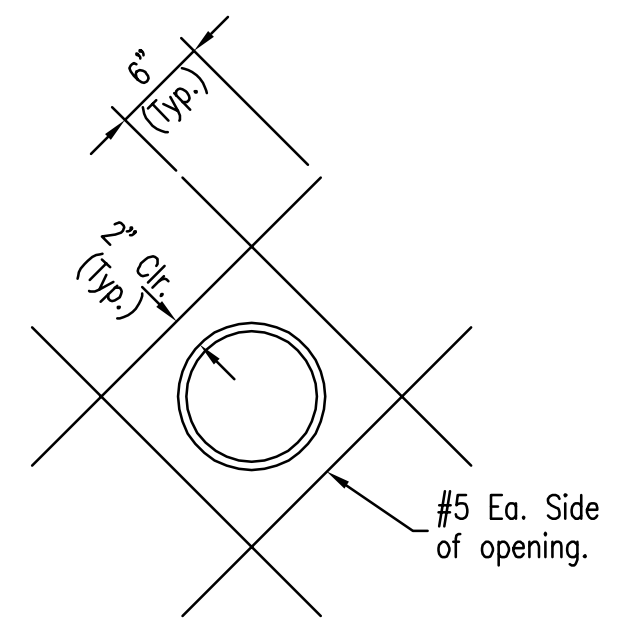
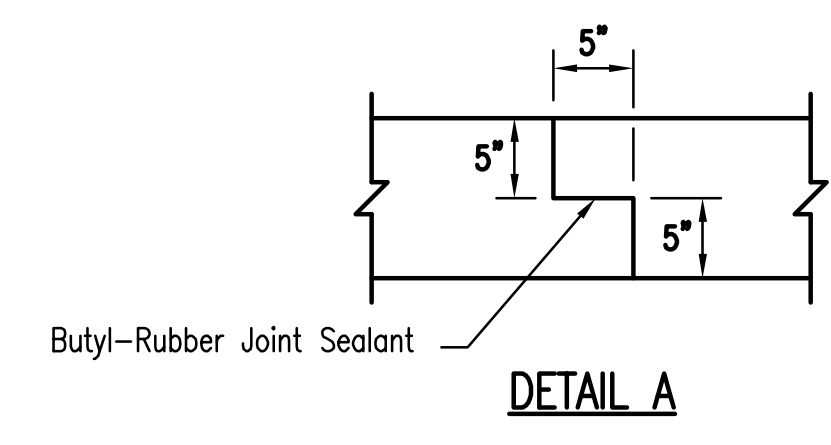
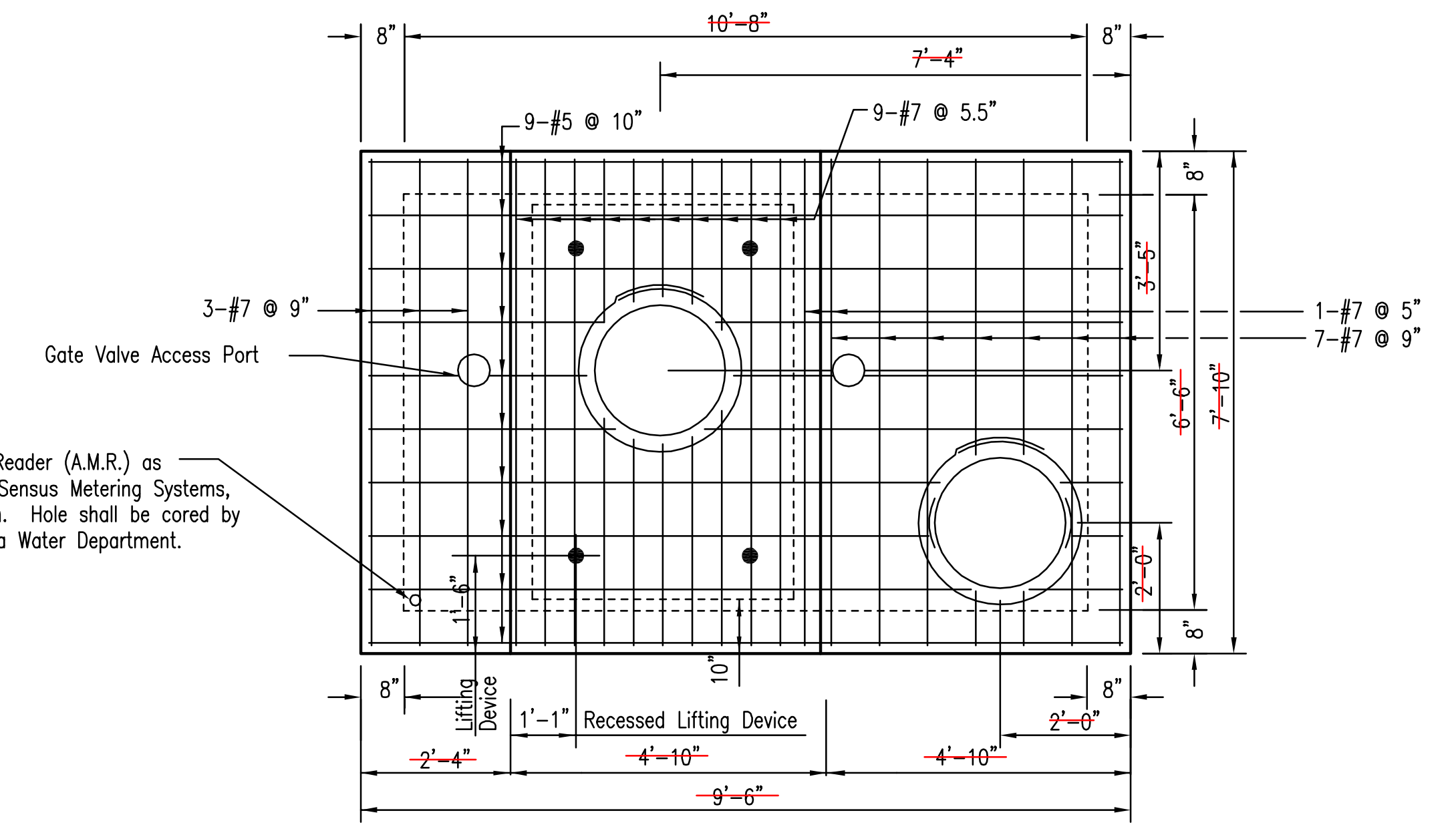
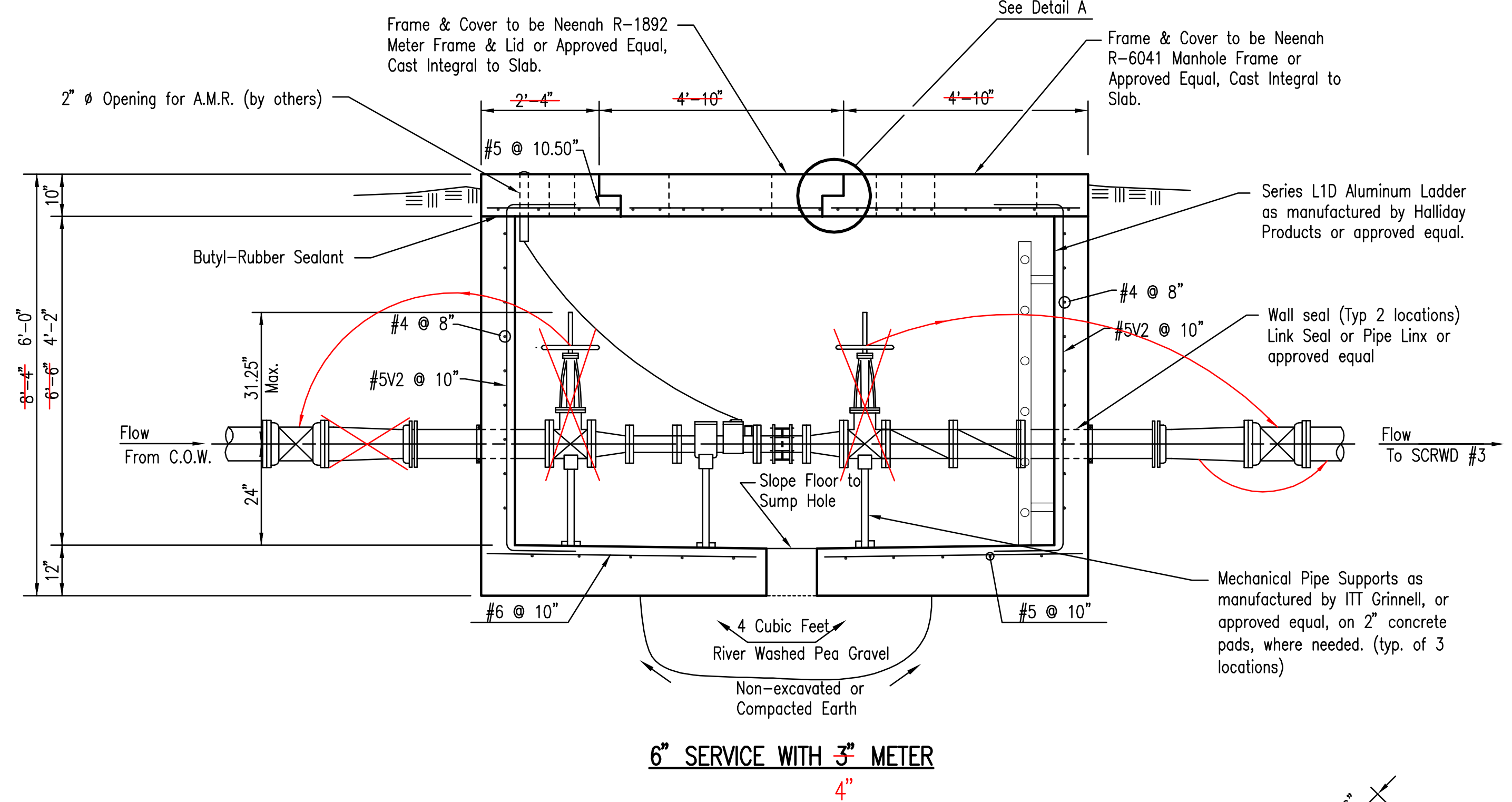


- A 8" x 6" CI CL MJ Reducer (Large end PE x Small end MJ)
- B 6" Mueller 0.5- & Y- FL x FL Gate Valve Valve (MJ)
- 4" C 3" OMNI T<sup>2</sup> Meter with V Shaped Strainer as manufactured by Sensus Metering Systems
- D 6" FL x FL Check Valve
- E 6" FL x PE DI CL Spool
- F 6" Megalug Pipe Restraint/Wall Clamp
- 4" G 3" F x E Coupling as manufactured by Brico Industries, Inc. or approved equal
- H Automatic Meter Reader/TouchRead System
- 4" I 6" x 3" FL x FL DI CL Reducer
- 4" J 3" FL x FL DI CL Spool (L=10")
- 4" K 3" FL x PE DI CL Spool (2 @ L= 6" ea.)



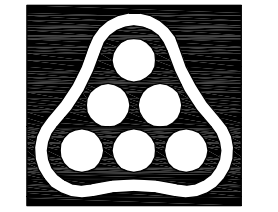
**GENERAL NOTES**

1. CONTRACTOR SHALL PURCHASE THE SENSUS OMNI T<sup>2</sup> METER AND AUTOMATIC METER READER/TOUCHREAD SYSTEM FROM THE CITY OF WICHITA, WATER UTILITIES DEPARTMENT. CONTACT GREG LOLLEY AT (316)268-4555 FOR PURCHASE INFORMATION.
2. USE 4000 P.S.I. COMPRESSIVE STRENGTH CONCRETE THROUGHOUT. ALL EXPOSED EDGES SHALL BE FINISHED WITH AN EDGING TOOL. ALL REINFORCING SHALL CONFORM TO ASTM A615, GRADE 60.
3. IN GENERAL, PIPES WILL ENTER AND LEAVE VAULT AT VARIOUS POSITIONS. WHERE POSSIBLE BEND BARS TO MISS OPENINGS.
4. VAULT OPENINGS SHALL BE PLACED TO AFFORD EASY ACCESS TO EQUIPMENT. TOP REINFORCING BARS SHALL BE ADJUSTED ACCORDINGLY.
5. DESIGN LOADING IS AASHTO H 20-44.
6. ALL REINFORCING TO HAVE 2" EDGE AND END CLEARANCE UNLESS NOTED.
7. ALL VAULT CONSTRUCTION SHALL BE WATERTIGHT, EXCEPT FOR THE SUMP.
8. THE VAULT TOP SHALL BE SEALED ON AN APPROVED BUTYL-RUBBER SEALANT TO PROVIDE A WATERTIGHT SEAL.



**TOP SLAB REINFORCING PLAN**

Scaled 03-13-2009 3:08:56 PM by JLS  
 Plot Scale 1:2 03-13-2009 3:45:02 PM  
 C:\1998\98831\RECORD DRAWINGS\98831-C-VaultDetails



No.	Revision	By	Date
CITY OF WICHITA, KANSAS SEDGWICK COUNTY RWD #3 EMERGENCY SUPPLY LINE <b>WATER METER VAULT DETAIL</b> JAMES L. ARMOUR, P.E. - CITY ENGINEER CITY OF WICHITA PRIVATE PROJECT NO. 1377 PFW (607853) <b>Professional Engineering Consultants, P.A.</b> 303 S. TOPEKA • WICHITA, KANSAS 67202 316-262-2691 • FAX 316-262-3003			
Designed by	EJB, JEM	Job No.	35-98831-4597
Drawn by	NCL	Date	NOV. 2007
			Sht. 4 of 8