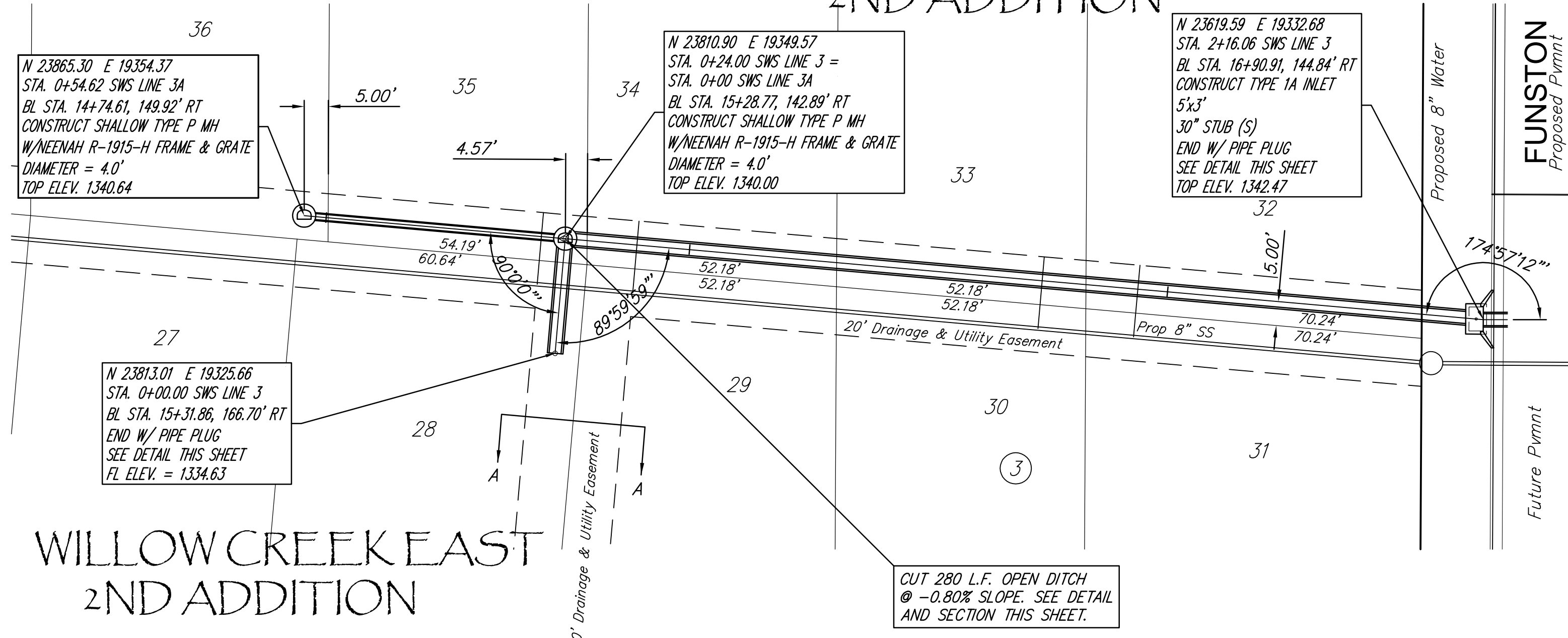


8" Brick Masonry

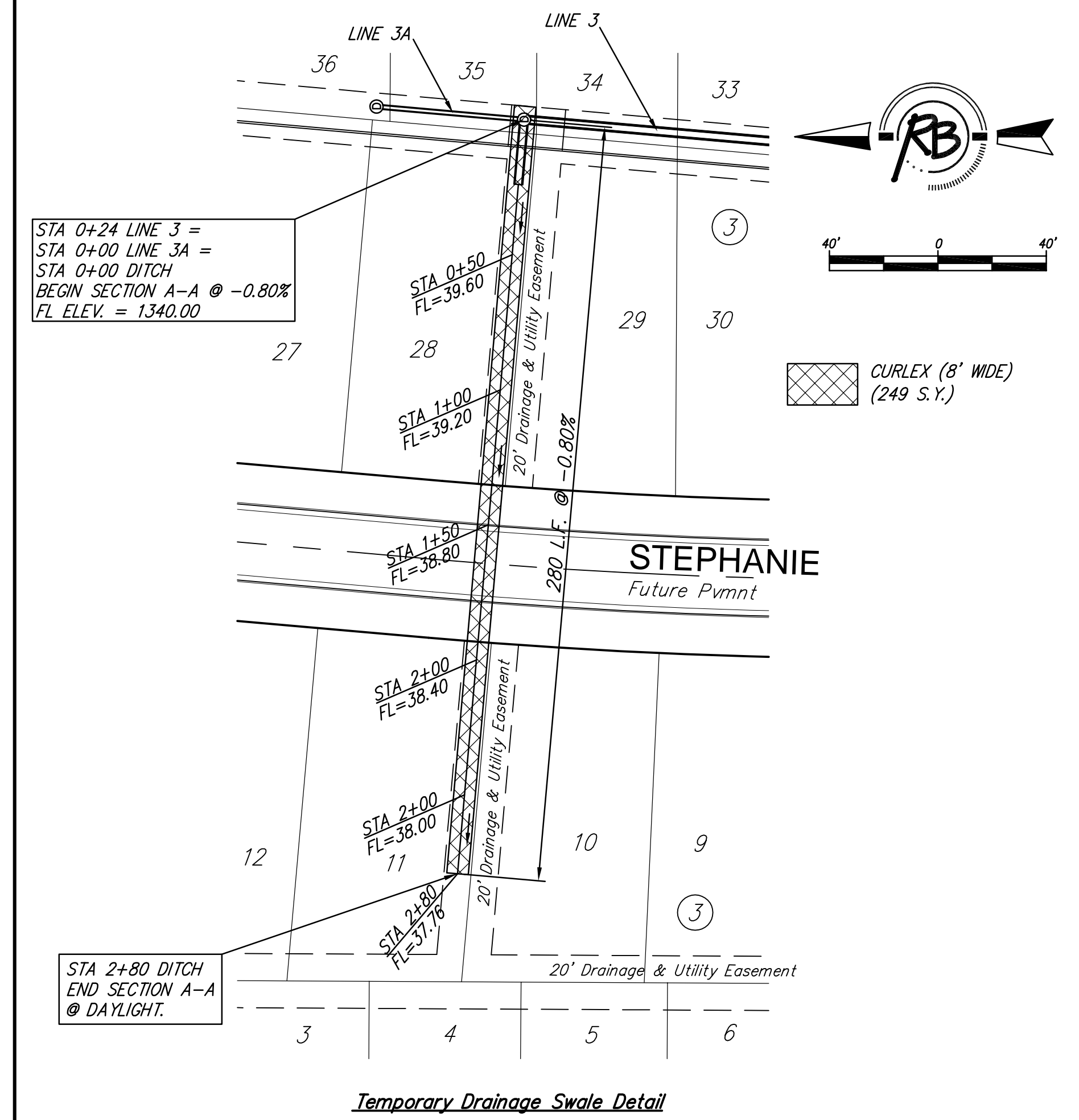
PIPE PLUG DETAIL

1. Mortar used in plug construction shall be in accordance with standard specifications.
2. All brick used shall meet Grade ASTM C32 for MM and MS.

WILLOW CREEK EAST 2ND ADDITION



WILLOW CREEK EAST 2ND ADDITION



Temporary Drainage Swale Detail

Note: Line 3 and 3A are not to accept storm water until the adjacent phase is constructed. The storm sewer shall be constructed in this phase to prevent utility conflicts in the future. The bolt on lids shall be replaced w/ beehive frame and grates in a future project.

1350	LINE 3	1350	LINE 3A
1345	See Detail Above for Grade away from Manhole	1345	Grade at Time of Construction
1340	Grade at Time of Construction	1340	Proposed Grade
1335	Proposed Grade	1335	Prop SS
1330	Prop SS	1330	
1325		1325	
1320		1320	
	24.00 L.F. of 30" RCP @ 1.96%		54.62 L.F. of 15" RCP @ 0.92%
	192.04 L.F. of 30" RCP @ 0.40%		
0+00	0+24	2+16.05	0+00
	0+50		0+54.62

RB
 Engineering, Surveying, Land Planning
 600 Main St., Suite 200
 Wichita, Kansas 67203
 (316) 264-4571
 www.rub.com
 E-mail: info@rub.com

PROJECT NUMBER
468-84555
 DRAWING FILE
 [Eng Base]

DESIGN
 AML
 UTILITY

DRAWN
 RLS
 DATE
 Feb. 26, 2009

REVIEWED
 REVIEW

STORM SEWER LINE 3 & 3A
Willow Creek East 2nd Addition
WICHITA KANSAS

RB JOB
 3324E
 SHEET
 OF
 10