

GENERAL NOTES

1. Contractor will be required to provide a minimum notice of 72 hours to utility companies prior to starting any excavation as follows:

Kansas One-Call 687-2470

The Contractor must notify the following in case of an emergency:

Cox Communications 262-0661
 Kansas Gas Service 383-8600
 Westar Energy 383-8600
 Aquila Energy 1-800-303-0357
 AT&T 1-800-286-8313
 City of Wichita Water Department 268-6000
 City of Wichita Sewer Maintenance 268-6000

2. All water mains and appurtenances shall be installed in accordance with City of Wichita, Kansas, Standard Specifications for the Construction of City Projects, and current policy on construction of public works improvements by private contract.

3. Opening and closing water valves shall be done slowly to prevent damage to the water distribution system from water hammer. All valves closed by the Contractor must be reopened as new construction permits. Project inspector must ascertain that any valve closed by the Contractor is reopened. Contractor will be permitted to operate water valves only when the project inspector assigned to the project is present.

4. The Contractor shall give all property owners and/or tenants of developed property directly abutting the construction of this project a minimum of ten (10) days advance notice prior to start of construction.

5. The Contractor shall be responsible for preserving property irons. The Contractor will be required to re-establish any property irons which are damaged or destroyed by his construction operations. Such irons shall be re-established by a licensed land surveyor in accordance with state laws.

6. No work shall begin on this project before required bonds are submitted to the City of Wichita, and the project inspector has been notified.

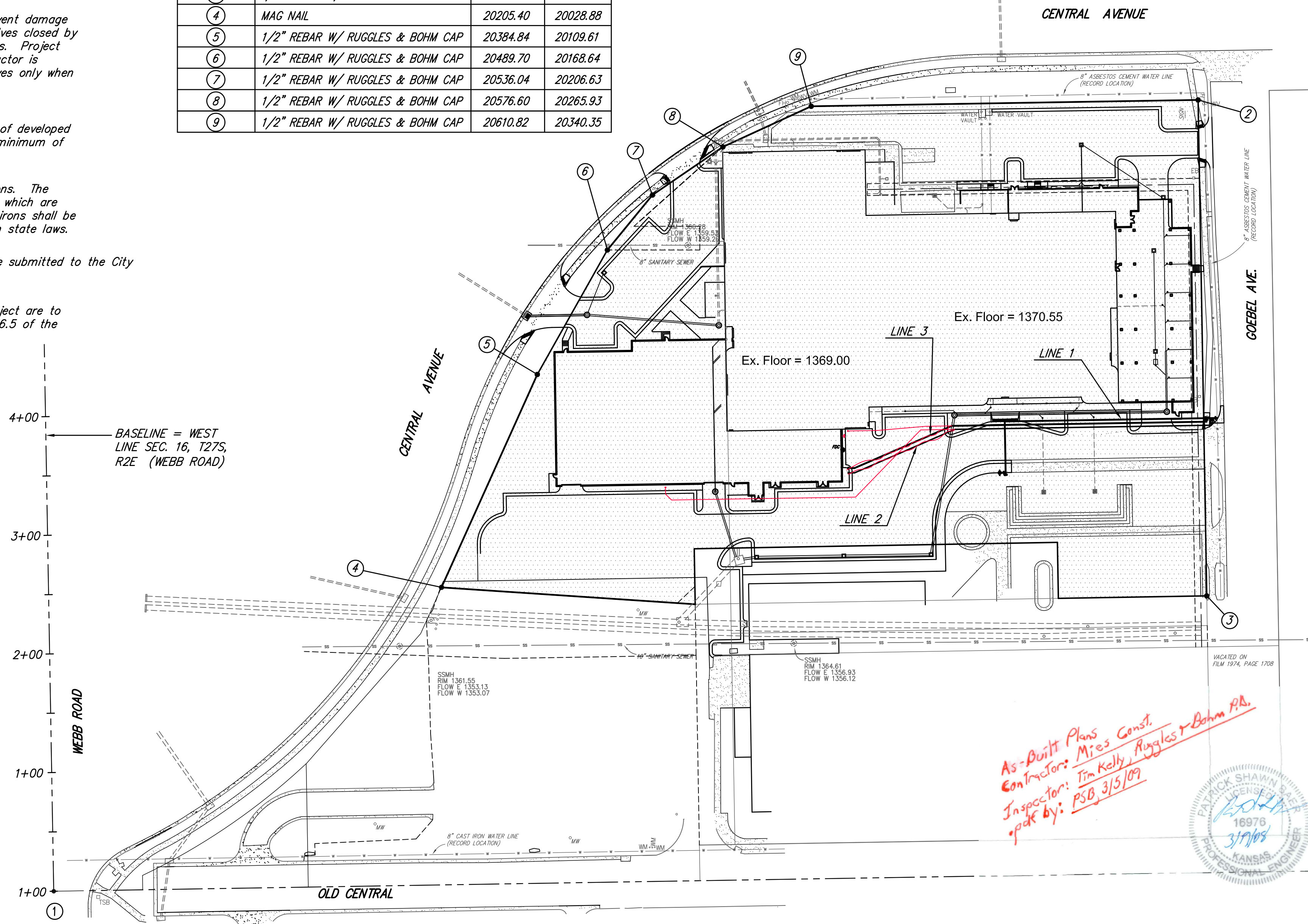
7. All areas of public R/W disturbed by construction of this project are to be restored in accordance with Administrative Regulation AR6.5 of the City of Wichita.

8. No traffic will be affected by this project.

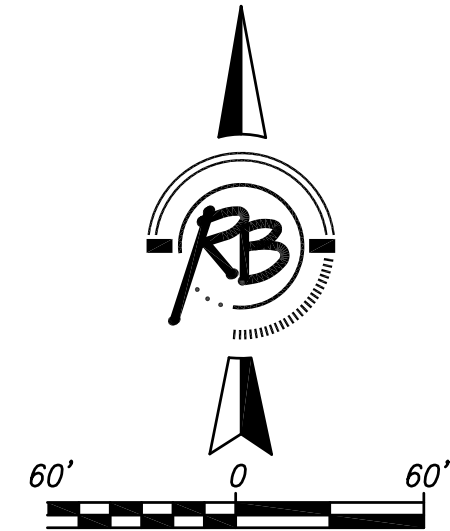
PRIVATE WATER MAIN AND FIRE SERVICE TO SERVE Lot 1, Block 1, FlightSafety Addition PRIVATE PROJECT NUMBER 1382 PPS (607853)

COORDINATE CONTROL TABLE

CONTROL NO.	DESCRIPTION	NORTHING	EASTING
①	SW SECTION CORNER, SEC. 16, T27S, R2E (CHISELED CROSS)	19949.30	19702.23
②	5/8" REBAR W/ RUGGLES & BOHM CAP	20616.15	20666.31
③	1/2" REBAR W/ RUGGLES & BOHM CAP	20198.21	20673.56
④	MAG NAIL	20205.40	20028.88
⑤	1/2" REBAR W/ RUGGLES & BOHM CAP	20384.84	20109.61
⑥	1/2" REBAR W/ RUGGLES & BOHM CAP	20489.70	20168.64
⑦	1/2" REBAR W/ RUGGLES & BOHM CAP	20536.04	20206.63
⑧	1/2" REBAR W/ RUGGLES & BOHM CAP	20576.60	20265.93
⑨	1/2" REBAR W/ RUGGLES & BOHM CAP	20610.82	20340.35



BASELINE = WEST LINE SEC. 16, T27S, R2E (WEBB ROAD)



INDEX OF SHEETS

- 1. TITLE SHEET
- 2. PLAN & PROFILE
- 3. WATER ASSEMBLY DETAILS

BENCHMARK

BENCH MARK: CITY OF WICHITA BENCH MARK AT THE SOUTHWEST CORNER OF A RCBC, 200± NORTH OF CENTRAL AND 40.41' WEST OF BACK OF CURB OF EAST MEDIAN CURB ON WEBB ROAD ELEVATION = 1362.13 (NGVD29)

BENCH MARK: CHISELED SQUARE ON THE TOP OF CURB AT THE NORTH CURB RETURN ON THE EAST SIDE OF THE DRIVE ENTRANCE OFF OF OLD CENTRAL, AT THE SOUTHWEST CORNER OF BEECH ACTIVITY CENTER ELEVATION = 1363.10 (NGVD29)

BENCH MARK: CHISELED SQUARE ON THE TOP OF CURB AT THE SOUTH CURB RETURN AT THE SOUTHWEST CORNER OF CENTRAL AND GOEBEL ELEVATION = 1375.02 (NGVD29)

APPROVED AS NOTED BY CITY OF WICHITA

Public Works *[Signature]* 3/19/08

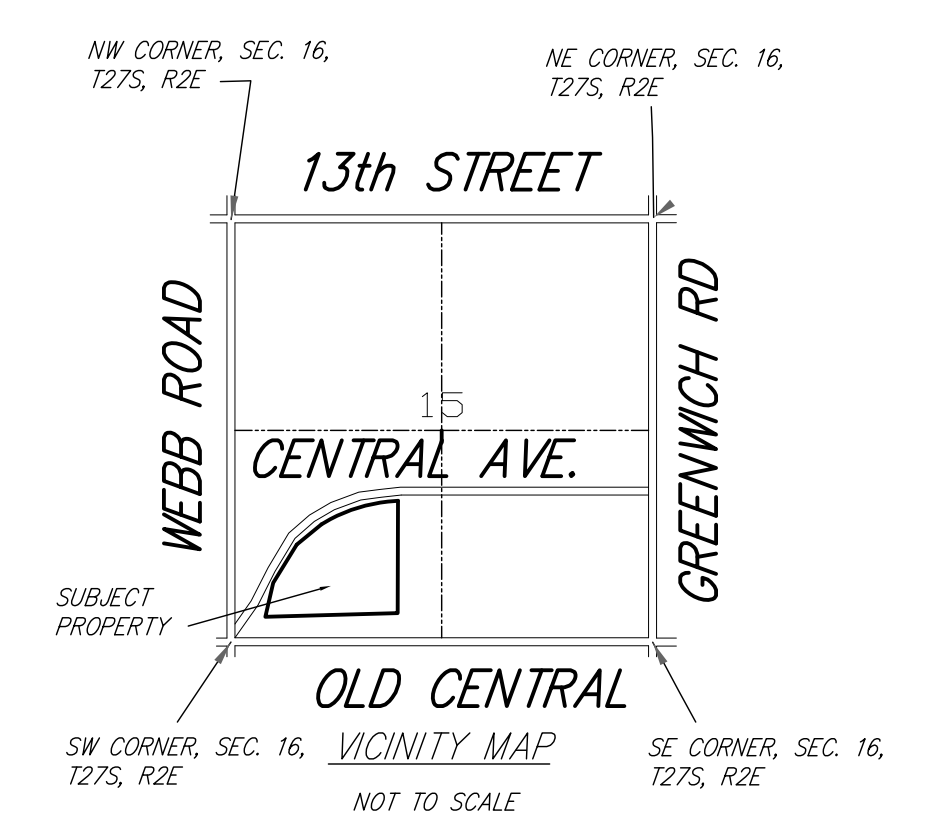
Water & Sewer *[Signature]* 3/20/08

Fire Dept. *[Signature]* 3/20/08

NOTE TO CONTRACTORS

PUBLIC PROPERTY:
 Inspection and testing for the waterline is to be provided by a Licensed consulting Engineering Firm under contract with the Owner/Developer. Said inspection to be in accordance with the City of Wichita standard construction engineering practices and certified by a Licensed Professional Engineer. No work shall be performed in dedicated easements or public right-of-way by the Contractor without such inspection nor shall any work be commenced without written authorization by the City Engineer. All Construction and Materials shall comply with the City of Wichita Specifications and Standards (on file and available in the City Engineer's Office).

PRIVATE PROPERTY
 Installation, inspection and testing for the fire protection line is to be performed by a City of Wichita certified fire protection contractor in accordance with the fire codes as adopted by the City of Wichita. All materials and construction practices for the fire protection line shall comply with the fire codes as adopted by the City of Wichita (available from the City of Wichita Fire Department). The contractor shall not commence work without notification of and approval of the Wichita Fire Department.



IMPROVEMENT DISTRICT

CITY OF WICHITA, KANSAS

JAMES L. ARMOUR, P.E. - CITY ENGINEER

Ruggles & Bohm, P.A.
 Engineering, Surveying, Land Planning

924 North Main (316) 264-8008
 Wichita, Kansas 67203 (316) 264-4621 fax
 www.rbkansas.com E-mail: info@rbkansas.com

CONSULTING ENGINEERS

TERNELL & ASSOCIATES
 177 CHESTERFIELD RD. PRVY
 CHESTERFIELD, MISSOURI 63005

CONTRACTOR:
 COONROD & ASSOCIATES
 3520 S HOOPER ROAD
 WICHITA, KANSAS 67277
 (316) 268-4622

ARCHITECT: GMA DESIGN GROUP INC.
 ARCHITECTURAL DESIGN SERVICES
 A DIVISION OF ARCHONATIONAL CONSTRUCTION
 9720 EAST CENTRAL AVENUE
 WICHITA, KANSAS
 PHONE: 314-825-8100 FAX: 314-825-8101
 LOCAL: 800-808-0104

PROPOSED BUILDING FOR:
FlightSafety
 9720 EAST CENTRAL AVENUE
 WICHITA, KANSAS

I CERTIFY TO THE BEST OF MY KNOWLEDGE THAT THE DRAWINGS & SPECIFICATIONS COMPLY WITH THE APPLICABLE MINIMUM BUILDING CODES

JOB NO : S-0717
 DRAWN BY : PSB
 ISSUE DATE : 3-3-08

REVISIONS

1
 2
 3
 4
 5

THIS SECTION AND THESE CHANGES ARE THE PROPERTY OF RUGGLES & BOHM, P.A. AND SHALL NOT BE REPRODUCED WITHOUT WRITTEN PERMISSION FROM THE DESIGN GROUP

SHEET NUMBER
 PPW-1