

Utility Owners

AT&T, Wichita Central Unit
154 N. Broadway Ave., RM 210
Wichita, Ks. 6720
Jason Edwards (316) 268-2008

Black Hills Energy
1611 S. Hoover Rd.
Wichita, Ks. 67209
Daryl Keller (316) 941-1654

Cox Communications Inc.
901 George Washington Blvd.
Wichita, Ks. 67211
Eva Moore (316) 260-7204

Kansas Gas Service
1021 E. 26th St. N.
Wichita, Ks. 67219
Jim Coe (316) 832-3126

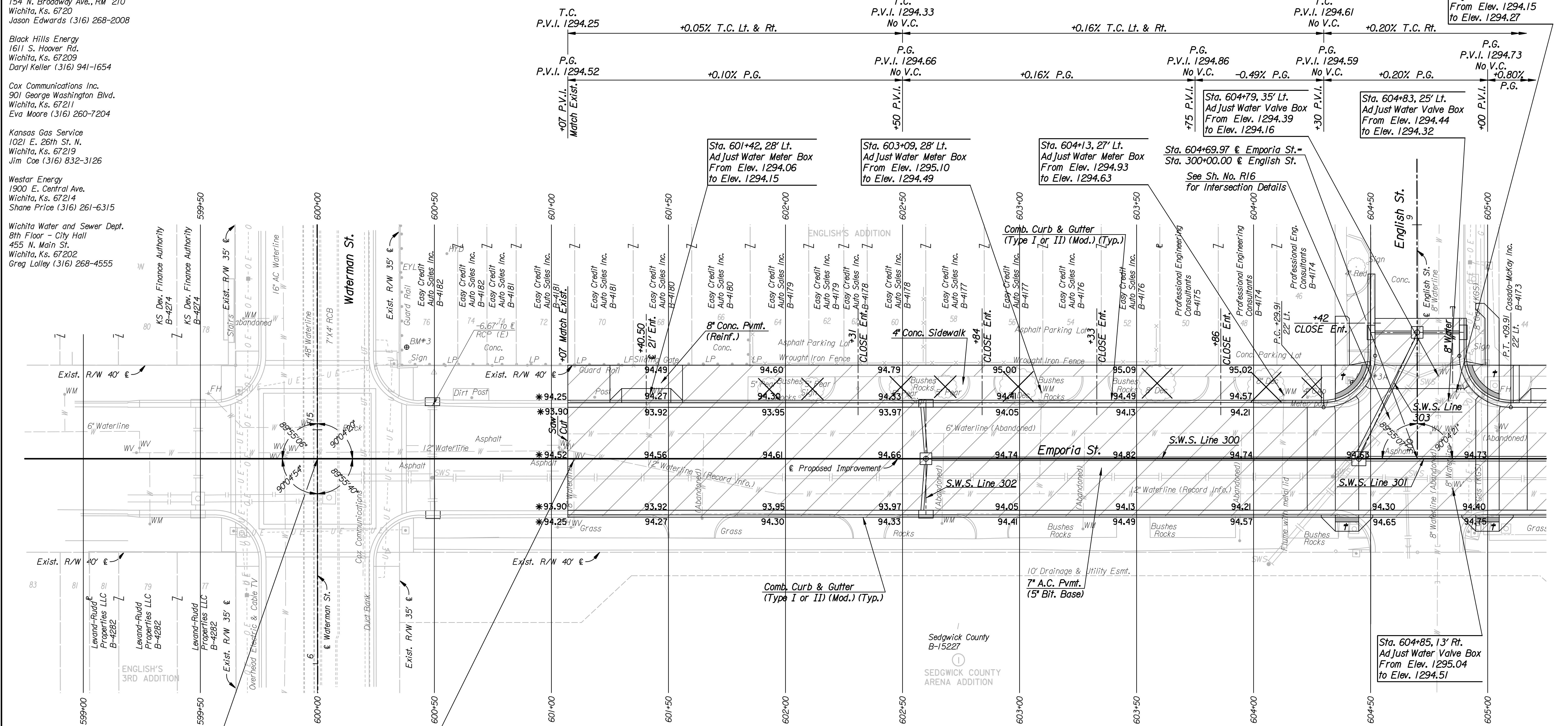
Westar Energy
1900 E. Central Ave.
Wichita, Ks. 67214
Shane Price (316) 261-6315

Wichita Water and Sewer Dept.
8th Floor - City Hall
455 N. Main St.
Wichita, Ks. 67202
Greg Lolley (316) 268-4555

P.I. @ Sta. 600+00.00
1. No Monument Set

P.I. @ Sta. 604+69.97
Deflection Angle = 00°00'33.3" Lt.
1. No Monument Set

Sta. 604+87, 29' Lt.
Adjust Water Valve Box
From Elev. 1294.15
to Elev. 1294.27

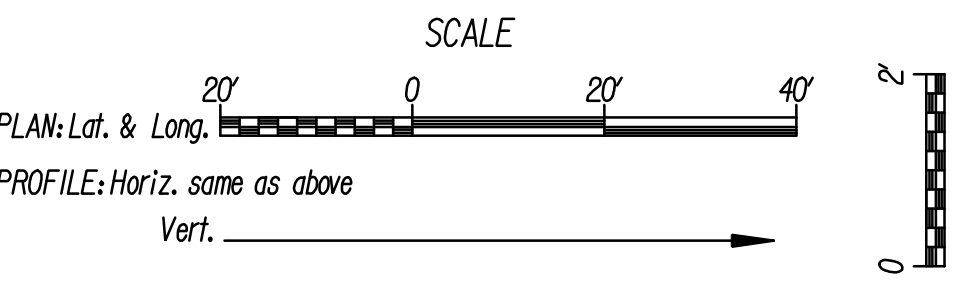


REMOVAL OF EXISTING STRUCTURES *		
STATION	SIDE	ITEM
601+18	Lt.	Parking Meter Post
602+06	Lt.	Sign
602+53	Lt.	Sign
604+23	Lt.	Parking Meter Post
604+34	Rt.	SWS Manhole, 12" VCP (NW), 10" VCP (N), & 15" VCP (S)
604+65	Rt.	SWS Manhole, 10" VCP (N), & 10" VCP (E)
604+41	Lt.	Traffic Signal Pole
604+45	Lt.	Sign
604+45	Lt.	Traffic Signal Manhole
604+48	Lt.	Curb Inlet, 12" RCP (N)
604+70	Lt.	SWS Manhole, 12" RCP (NNW), & 12" VCP (W)
604+91	Lt.	Curb Inlet
604+92	Rt.	Light Pole
604+94	Lt.	Sign
604+99	Lt.	Traffic Signal Pole
605+03	Lt.	Traffic Signal Manhole

LEGEND

- Pavement Removal
- Detectable Warning Strip
- Wheelchair Ramp
- Match Existing

Utilities
 Gas: Kansas Gas Service
 Power: Westar Energy
 Telephone: Cox Communications
 Television: Cox Communications
 Water: Wichita Water and Sanitary Sewer



NOTE: Proposed top of curb elevations shown are computed based on full height curb. Adjust elevations for 1/2" lip curb locations.

BM*3 Chis. on SW corner, conc. slab sign base, NW corner of Waterman St. and Emporia St.
47.69' Lt. @ Sta. 600+38.14 Elev.=1294.80

BM*3A Chis. on conc. base for crosswalk signal pole at SW corner of Emporia St. and English St.
32.54' Lt. @ Sta. 604+42.24 Elev.=1294.71

Plotted By: svb Date: 3/8/2009 2:04:03 PM
FILE: I:\2008\08456\Plan\08456-PL599_Emporia.dgn

Revision		By		Date	
EMPORIA STREET					
PLAN					
STA. 599+00 TO STA. 605+00					
JAMES L. ARMOUR, P.E. - CITY ENGINEER CITY OF WICHITA PROJECT NO. 472-84744					
Professional Engineering Consultants, P.A. 303 S. TOPEKA • WICHITA, KANSAS 67202 316-262-2691 • FAX 316-262-3003					
Designed by	JPS	Job No.	08456		
Drawn by	SVB	Date	Feb., 2009	Sht. R4 of R78	