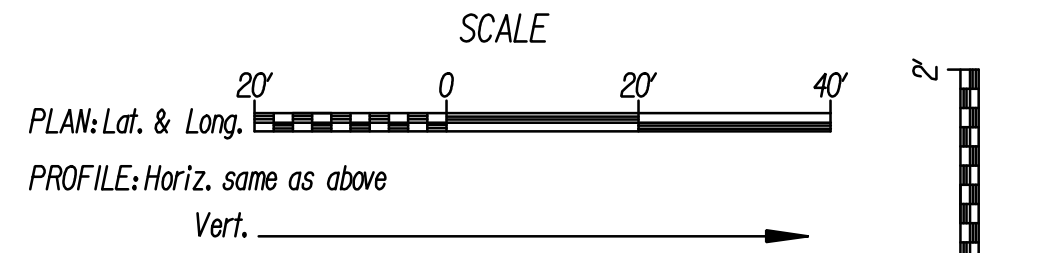
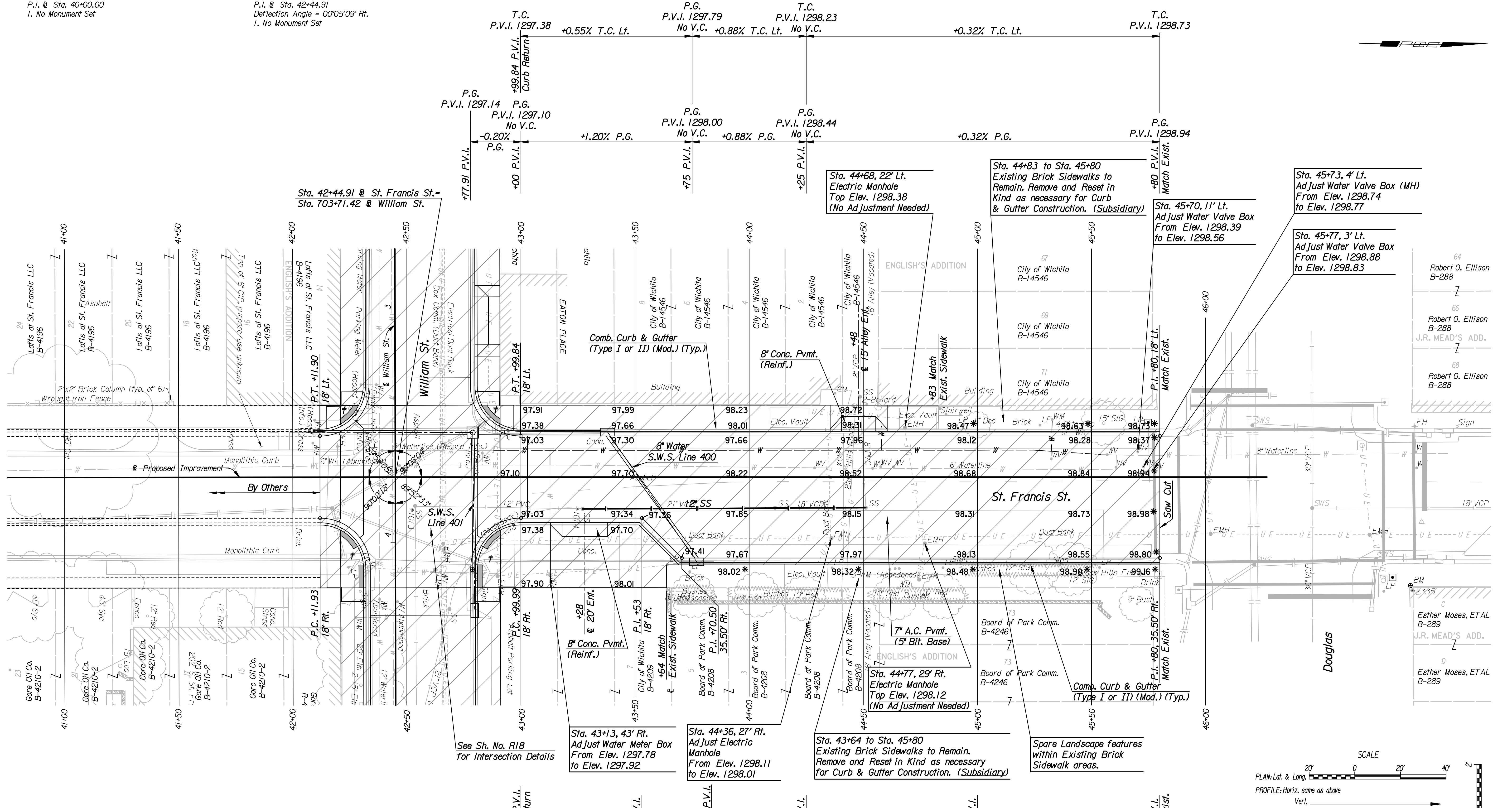


P.I. @ Sta. 40+00.00
I. No Monument Set

P.I. @ Sta. 42+44.91
Deflection Angle = 00°05'09" Rt.
I. No Monument Set

DRM OPER: SVB SCALE: 1"=20'
I:/2008/08652/PLAN/08652-PL41 St Francis.dgn LAST REV: 11-19-2008 BY: drp



NOTE: Proposed top of curb elevations shown are computed based on full height curb. Adjust elevations for 1/2\"/>

BM*3C Chis. top of curb at NE corner of William St. and St. Francis St. 40.63' Rt. @ Sta. 42+78.78 Elev.=1297.42

- Utilities**
- Gas Kansas Gas Service
 - Gas Black Hills Energy
 - Power Westar Energy
 - Sanitary Sewer Wichita Water and Sanitary Sewer
 - Telephone AT&T
 - Television Cox Communication
 - Water Wichita Water and Sanitary Sewer

- LEGEND**
- Pavement Removal
 - Detectable Warning Strip
 - Wheelchair Ramp
 - Match Existing

| | | | |
|--|----------|---------|----------------|
| No. | Revision | By | Date |
| ST. FRANCIS STREET | | | |
| PLAN | | | |
| STA. 41+00 TO STA. 46+00 | | | |
| JAMES L. ARMOUR, P.E.—CITY ENGINEER CITY OF WICHITA PROJECT NO. 472-84744 | | | |
| Professional Engineering Consultants, P.A. | | | |
| 303 S. TOPKA • WICHITA, KANSAS 67202 316-262-2691 • FAX 316-262-3003 | | | |
| Designed by | JPS | Job No. | 08652 |
| Drawn by | SVB | Date | Feb., 2009 |
| | | | Sht. R7 of R78 |