

PEDESTAL NOTES:

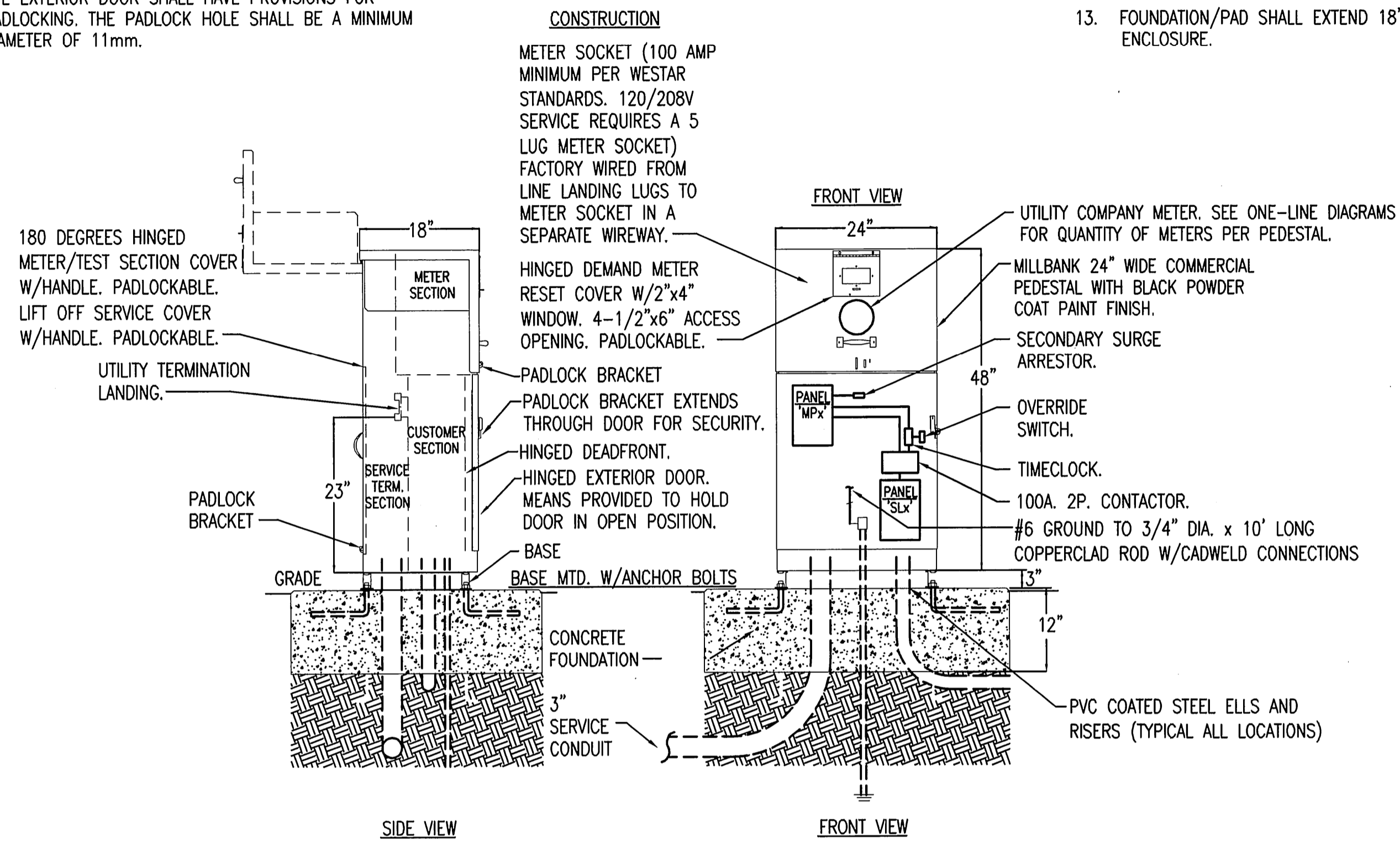
- CONTROL CABINET SHALL BE U/L LISTED "INDUSTRIAL CONTROL PANEL" PER UL 508.
- CONSTRUCTION SHALL BE NEMA 3R.
- PROVIDE 100A METER, SOCKET, AND PANELBOARDS PER NOTES.
- SERVICE EQUIPMENT ENCLOSURE AND METERING EQUIPMENT SHALL MEET THE REQUIREMENTS OF THE SERVING UTILITY. THE METER AREA SHALL HAVE A SEALABLE, LOCKABLE, RAIN-TIGHT COVER THAT CAN BE REMOVED WITHOUT THE USE OF TOOLS.
- SERVICE EQUIPMENT SHALL BE FACTORY WIRED AND CONFORM TO NEMA STANDARDS.
- THE EXTERIOR DOOR SHALL HAVE PROVISIONS FOR PADLOCKING. THE PADLOCK HOLE SHALL BE A MINIMUM DIAMETER OF 11mm.

- ALL TERMINALS FOR INCOMING SERVICE CONDUCTORS SHALL BE COMPATIBLE WITH EITHER COPPER OR ALUMINUM CONDUCTORS SIZED TO SUIT THE CONDUCTORS SHOWN ON THE PLAN. TERMINAL LUGS SHALL BE COPPER OR TIN-PLATED ALUMINUM. SOLID NEUTRAL TERMINAL STRIP SHALL BE RATED 125A UNLESS OTHERWISE SPECIFIED AND FOR USE WITH COPPER OR ALUMINUM CONDUCTORS. THE TERMINAL SHOULD INCLUDE BUT NOT BE LIMITED TO:
 - INCOMING TERMINALS (LANDING LUGS)
 - NEUTRAL LUGS
 - SOLID NEUTRAL TERMINAL STRIP.
 - TERMINAL STRIPS FOR CONDUCTORS WITHIN THE ENCLOSURE.

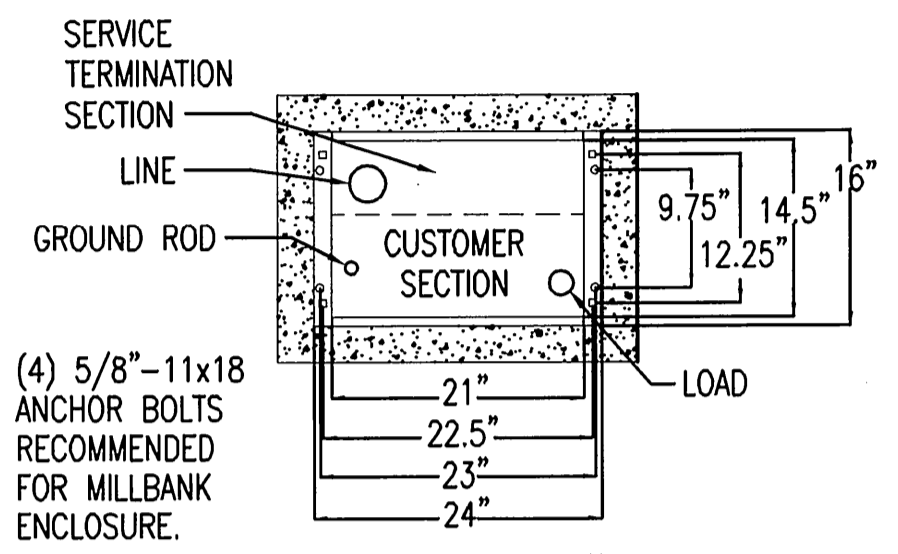
- PROVIDE PANELBOARD PER PANELBOARD SCHEDULES. SEE ONE-LINE DIAGRAMS FOR PANEL BOARD QUANTITIES.
- PLUG-IN CIRCUIT BREAKERS MAY BE MOUNTED IN THE VERTICAL OR HORIZONTAL POSITION. CABLE-IN/ CABLE-OUT CIRCUIT BREAKERS SHALL BE MOUNTED IN THE VERTICAL POSITION.
- FASTENERS ON THE EXTERIOR OF THE ENCLOSURE SHALL BE VANDAL RESISTANT AND SHALL NOT BE REMOVABLE FROM THE EXTERIOR. ALL NUTS, BOLTS, SCREWS, WASHERS, AND HINGES SHALL BE STAINLESS STEEL.
- PHENOLIC NAME PLATES SHALL BE PROVIDED AS REQUIRED. A PLASTIC COVERED WIRING DIAGRAM SHALL BE ATTACHED TO THE INSIDE OF THE FRONT DOOR.
- FOUNDATION/PAD SHALL EXTEND 18" MINIMUM BEYOND EDGE OF ENCLOSURE.

PAD NOTES:

- THE TOP OF THE PAD SHALL RECEIVE A SMOOTH TROWEL FINISH. THE CORNERS AND EDGES SHALL BE CHAMFERED.
- THE CONCRETE SHALL BE A MINIMUM OF 4,000 LB. MIX.
- CONTRACTOR SHALL EXTEND FORMS DOWN TO AT LEAST 3" BELOW AVERAGE GROUND LINE.
- TOP OF CONDUITS SHALL BE FLUSH WITH TOP OF PAD.
- THE CONDUIT OPENING SHALL BE FREE AND CLEAR OF CONCRETE.
- CONCRETE FILLED PILLARS ARE FORMED BY AUGERING AN 8" DIAMETER HOLE TO A DEPTH OF UNDISTURBED EARTH (MIN. 36"). A SEPARATOR, SUCH AS TAR PAPER, SHOULD BE PLACED BETWEEN THE PILLAR AND THE PAD SO THE PAD CAN BE LEVELLED AT A LATER TIME IF NECESSARY.



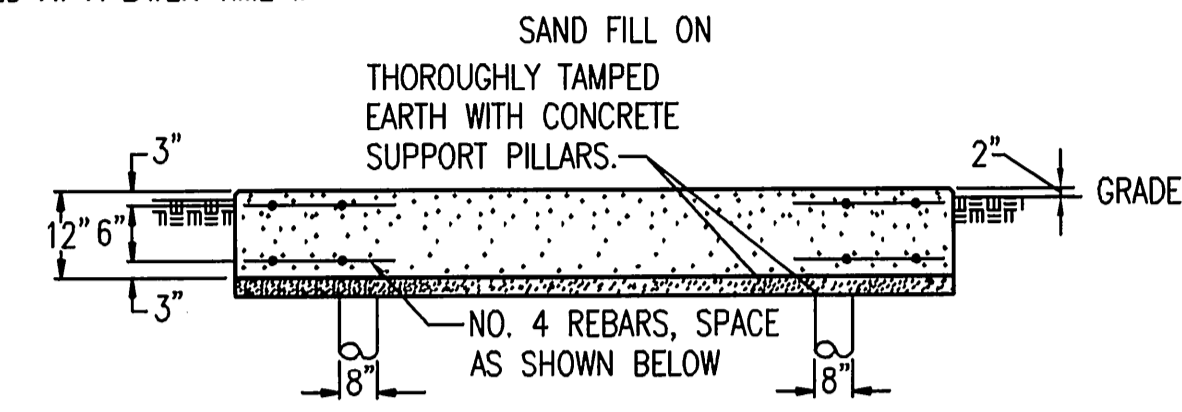
1A PEDESTAL DETAIL
NO SCALE



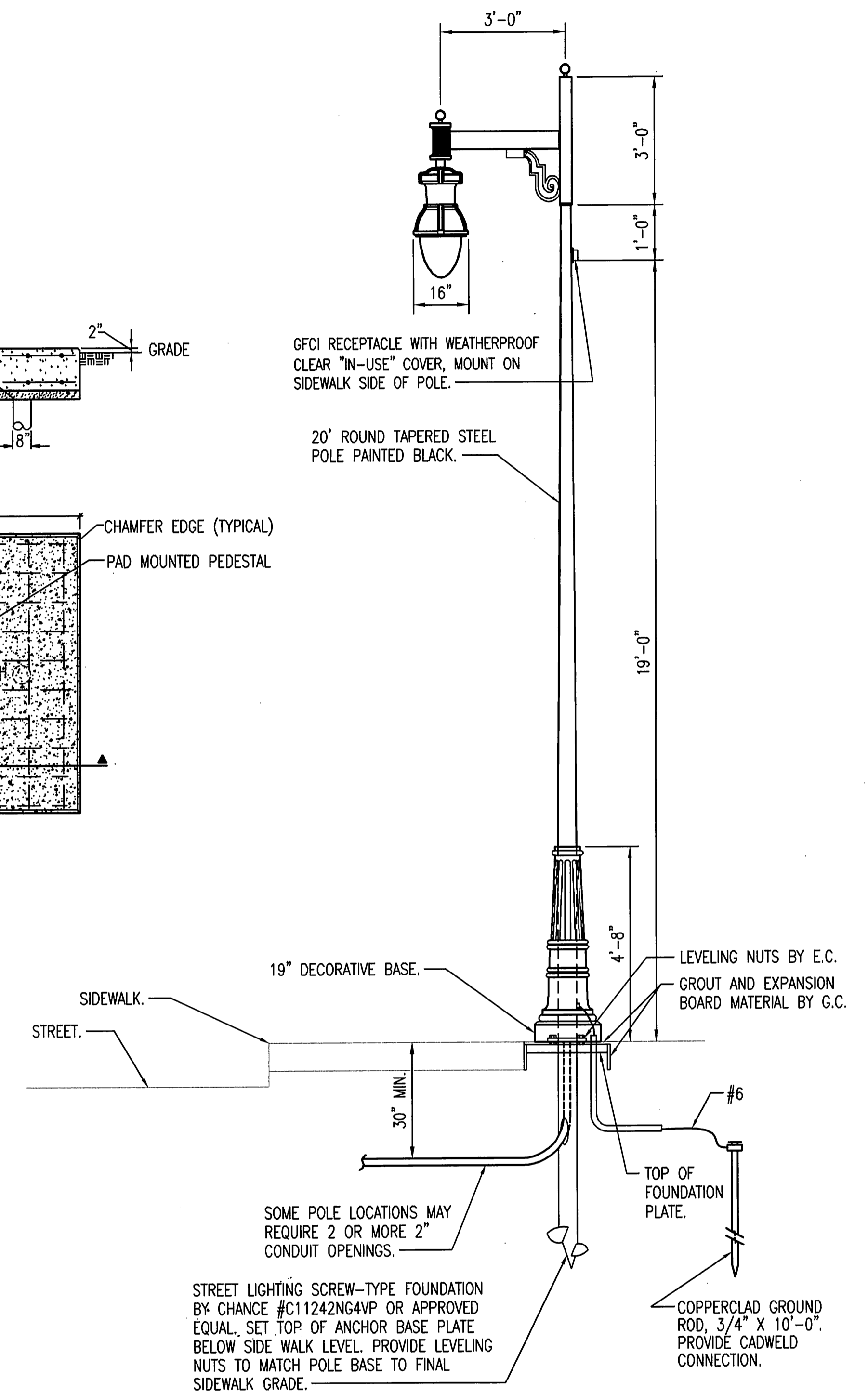
NOTE:
1. UTILITY METER SHALL BE LOCATED PER WESTAR REQUIREMENTS. VERIFY ALL SERVICE REQUIREMENTS WITH WESTAR.
2. SEE SITE PLANS FOR APPROXIMATE LOCATIONS.

PAD BY CONTRACTOR. VERIFY ALL REQUIREMENTS WITH EQUIPMENT PROVIDED PRIOR TO PLACING CONCRETE PAD.

1 TYPICAL ELECTRICAL SERVICE PEDESTAL DETAIL
NO SCALE VOLATEGE: 208V, 1Ø, 3-WIRE



1B PAD DETAIL
NO SCALE



1 LIGHTING POLE 'S2' DETAIL
NO SCALE

SUMMARY OF ELECTRIC LIGHTING SYSTEM QUANTITIES

DESCRIPTION	UNIT OF MEASURE	QUANTITY
ENCLOSURE PEDESTAL	EACH	2
#8 AWG COPPER CABLE	FOOT	3582
#10 AWG COPPER CABLE	FOOT	5649
#6 AWG COPPER CABLE	FOOT	1251
#1 AWG COPPER CABLE	FOOT	165
3" PVC CONDUIT	FOOT	225
2" RGS CONDUIT	FOOT	1270
3" PVC CONDUIT 90° ELBOW	EACH	3
2" RGS CONDUIT 90° ELBOW	EACH	27
3/4" x 10'-0" GROUND RODS WITH CLAMPS	EACH	14
STREET LIGHT FIXTURE S2 - 175W PMH - 20'-0" RTS POLE	EACH	12
SCREW IN FOUNDATION FOR LIGHT POLE	EACH	12
20A. 125V. 2P. 3W. GFCI RECEPTACLE WITH IN-USE COVER	EACH	12
TRENCH AND BACKFILL	FOOT	1489

FOR INFORMATION ONLY. THE BID ITEM "STREET LIGHTING" SHALL INCLUDE ALL ITEMS LISTED AND ALL EQUIPMENT AND MATERIALS NECESSARY FOR THE COMPLETE OPERATION OF THE ELECTRICAL LIGHTING SYSTEM.

LIGHTING FIXTURE SCHEDULE (P.E.C.)

FIXT. LTR.	MANUFACTURER CATALOG NUMBER	MANUFACTURER CATALOG NUMBER	MANUFACTURER CATALOG NUMBER	MANUFACTURER CATALOG NUMBER	DESCRIPTION SEE NOTES	LAMP TYPE NO.	VOLTS	LENS\LOUVER\FINISH	REMARKS	W	L	D
S2	SUN VALLEY LTG CS-3327				HISTORICAL 20' ROUND TAPERED STEEL POLE W/ HANDHOLE & BOLT COVERS. VERIFY POLE TO MEET TOTAL FIXTURE EPA REQ'NTS AT 110 W/ 1.3 GUST FACTOR.	175W PMH	1	MT	TYPE III/BLACK SINGLE ARM FIXTURE			

- MANUFACTURER LISTED IN THIS SCHEDULE WILL BE THE ONLY APPROVED MANUFACTURERS TO BID THE LIGHTING FIXTURES FOR THIS PROJECT. CONTRACTORS AND SUPPLIERS USING PRICING FROM MANUFACTURERES NOT LISTED ON SCHEDULE DO SO AT THEIR OWN RISK.
- FIXTURE AND POLE SHALL MATCH FIXTURE ON WEST DOUGLAS IN THE DELANO DISTRICT BY SUN VALLEY LIGHTING. PROVIDE WITH POLE MOUNTED, 20A. 120V. GFCI RECEPTACLE AND WEATHERPROOF CLEAR "IN-USE" COVER MOUNTED ON SIDEWALK SIDE OF POLE. PROVIDE WITH MULTI-TAP BALLAST FOR OPERATION AT 208V. OR 240V.



No.	Revision	By	Date
LIGHTING DETAILS			
JAMES L. ARMOUR, P.E.-CITY ENGINEER CITY OF WICHITA PROJECT NO. 472-84744 Professional Engineering Consultants, P.A. 303 S. TOPEKA • WICHITA, KANSAS 67202 316-262-2691 • FAX 316-262-3003			
Designed by	SMS	Job No.	08456
Drawn by	TAL	Date	Feb., 2009
			Sh. E5 of 5