

Benchmarks

BM #1: 3/4" Iron with Sedgwick County Cap set in concrete, located in the center of the 21st Street & 151st Street intersection
Elev. = 1367.00 (NAVD 88)

BM #2: Square cut "a" on Northwest wingwall of the 21st St. N bridge over Dry Creek.
Elev. = 1365.87 (NAVD 88)

BM #3: Top of 2" Steel T-Post 10' West and 7' North of Property Iron
Elev. = 1360.75 (NAVD 88)

BM #4: Railroad Spike in the North Face of a 36" Hackberry Tree at the West End of the Tree Row on the East Side of Gate.
Elev. = 1364.43 (NAVD 88)

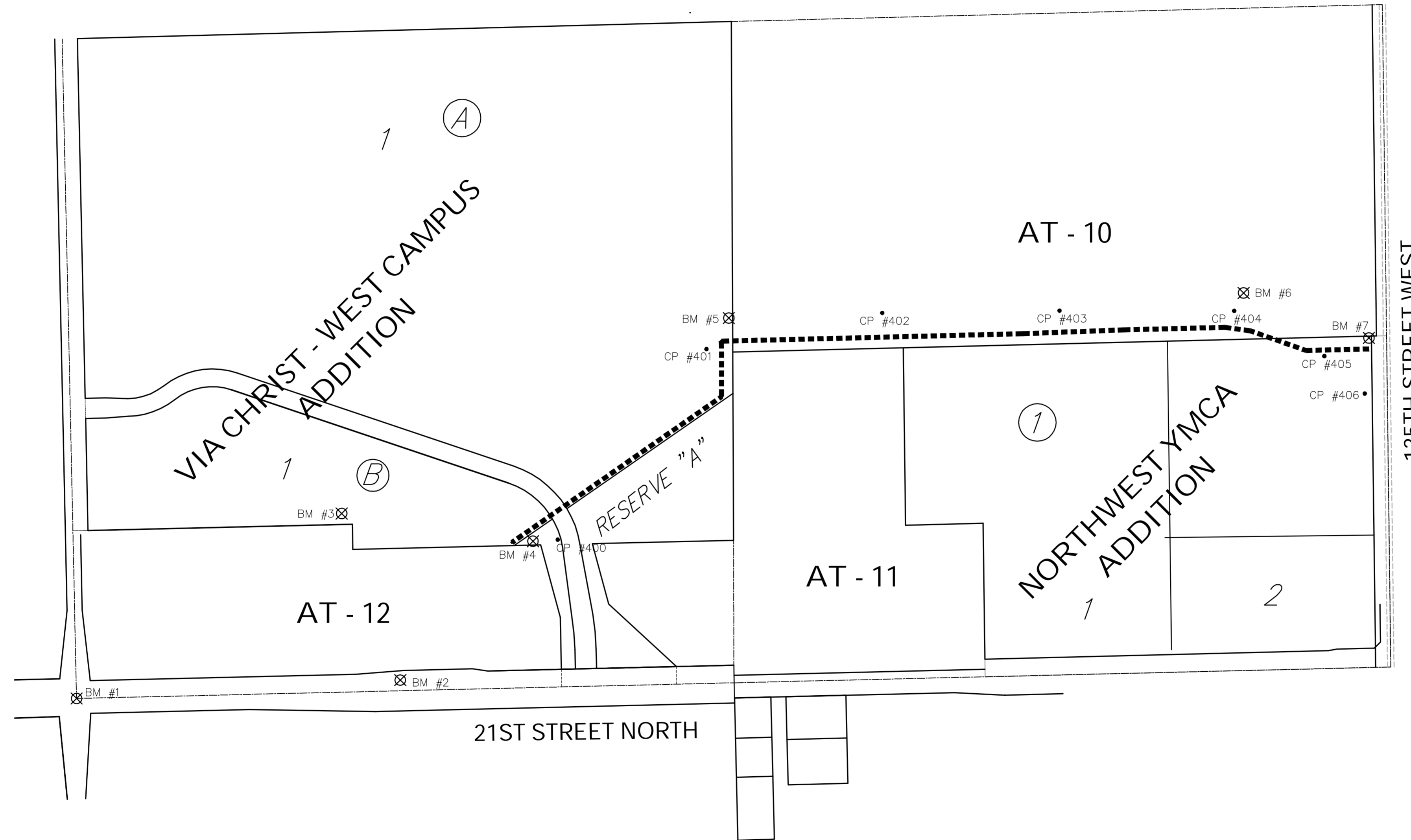
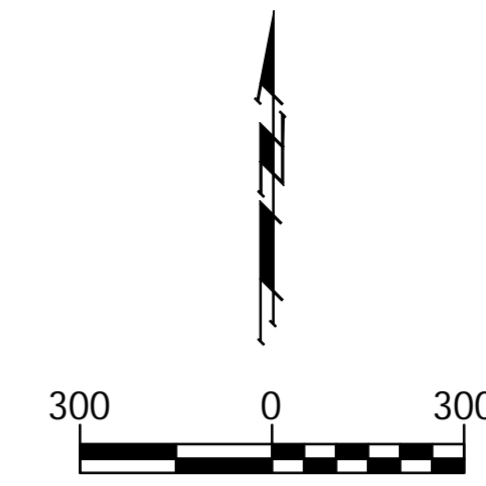
BM #5: Railroad Spike in the South Face of a 24" Hackberry Tree Approx. 137' North of 1/16th Quarter.
Elev. = 1356.50 (NAVD)

BM #6: Square cut "a" on the South Side of the Concrete Base of the HLP.
Elev. = 1353.29 (NAVD 88)

BM #7: Railroad Spike in the West Face of Guy Pole North of Sanitary Sewer Manhole Near 135st Street West.
Elev. = 1357.05

CONTROL POINTS

C.P. #	Northing	Easting	Description
400	10,631.08	21,910.75	# 4 Rebar with Large Orange Baughman Cap
401	11,388.04	22,501.50	# 4 Rebar with Large Orange Baughman Cap
402	11,531.54	23,199.53	# 4 Rebar with Large Orange Baughman Cap
403	11,540.60	23,903.59	# 4 Rebar with Large Orange Baughman Cap
404	11,539.80	24,597.25	# 4 Rebar with Large Orange Baughman Cap
405	11,359.86	24,955.23	# 4 Rebar with Large Orange Baughman Cap
406	11211.30	25,115.71	# 4 Rebar with Large Orange Baughman Cap



Drawing File: E:\eng\Via Christi Water & Sewer\Land\dwg\Sewer Base.dwg (Coordinates)

Design: TPV
Drawn: JM
Approved: TPV
Scale: NOTED

Project No. 0710E952 VIA CHRIST WEST CAMPUS

COORDINATE SHEET

MAIN 11 NORTHWEST INTERCEPTOR SEWER

Baughman **Baughman Company, P.A.**
315 Ellis St. Wichita, KS 67211 P 316-262-7271 F 316-262-0149
ENGINEERING | SURVEYING | PLANNING | LANDSCAPE ARCHITECTURE

March 2009

SHEET
11
OF
12