

**BENCHMARKS:**

BM #1  
Brass Rod in Concrete, South East Corner of 9th Street & Washington  
Elev. = 1300.17

BM #2  
COW Benchmark North East Corner of Washington & Central  
Elev. = 1298.39

BM #3  
"I" cut at back of walk NW property corner Washington & 9th  
Elev. = 1301.49

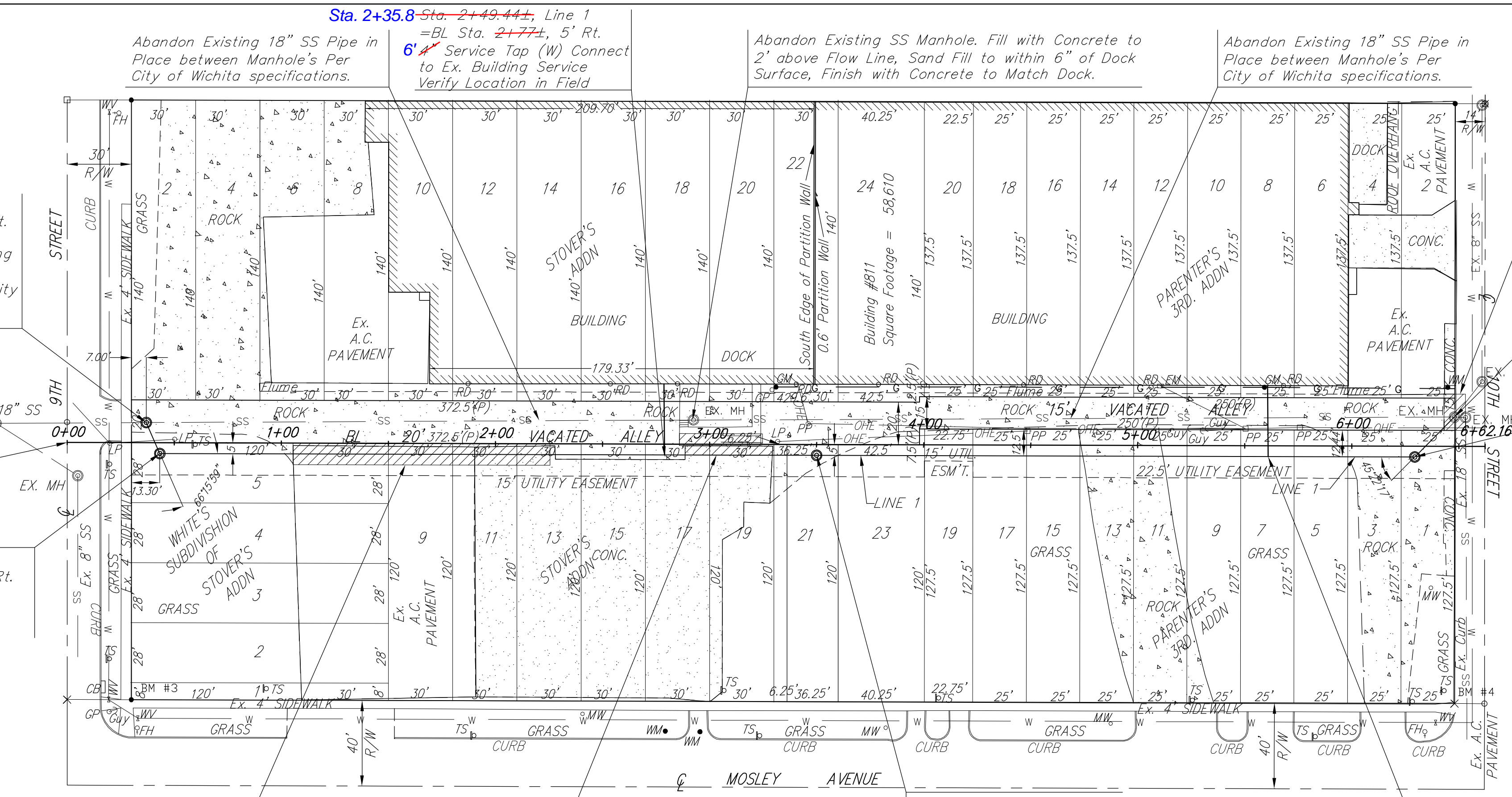
BM #4  
"I" cut at bck of walk SW property corner Washington & 10th  
Elev. = 1301.53

Note:  
Line moved 15' to the east.

Sta. 0+00, Begin Line 1  
=BL Sta. 0+37.00, 9.42' Lt.  
Construct Standard Shallow Type P Manhole over Existing 18" Sanitary Sewer. Plug Existing SS Pipe (N) Per City of Wichita Specifications  
Top Elev. = 1301.50

=BL Sta. 0+00, BL = East Edge of Alley Extended from the Q 9th Street

Sta. 0+15.75, Line 1  
=BL Sta. 0+43.31, 5' Rt.  
Construct Standard Type P Manhole  
Top Elev. = 1302.00



Location	MH No. - MH No.	Hor. Dist. Main-Tap	Tap Size	Dist. from Upstream MH	Dist. from Downstream MH
1009 N Mosley	5548.236 - 239 Sta 0+15.8 - 3+12.8	Lt.	6"	77'	220'
811 E 10th N	5548.239 - 240 Sta 3+12.8-5+87.8	Lt.	6"	69.75'	202.25'

Remove A.C. & Conc. Pavement and replace with Gravel to match Ex. Alloy Gravel

Remove Concrete Pavement and replace with 7" Reinforced Concrete Pavement

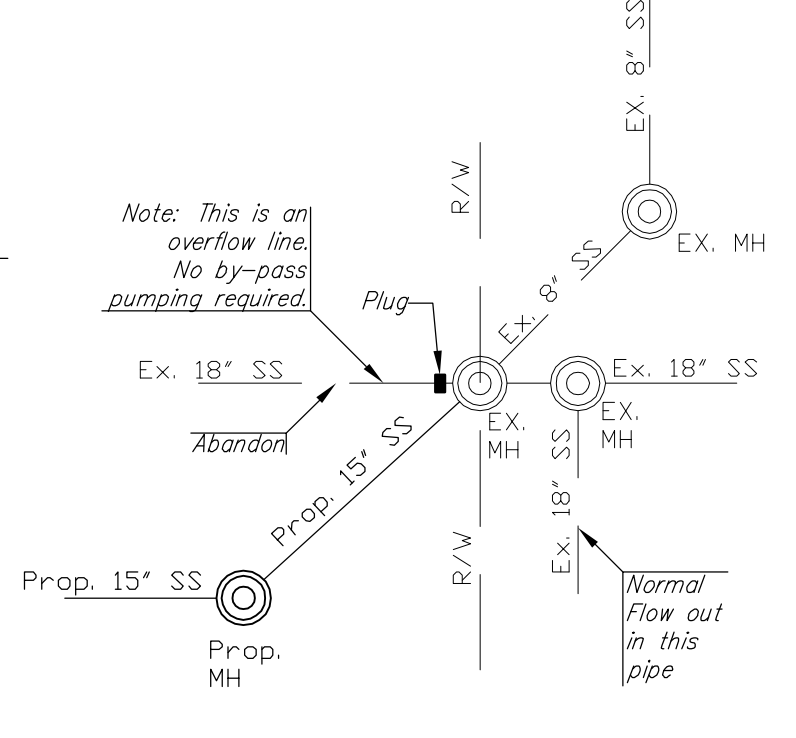
Sta. 3+12.8  
=BL Sta. 3+22.45, Line 1  
=BL Sta. 3+50.02, 5' Rt.  
Construct Standard Type P Manhole  
Top Elev. = 1303.70

Sta. 5+18.05  
=BL Sta. 5+32.26±, Line 1  
=BL Sta. 5+59.82±, 5' Rt.  
Service Tap (W) Connect to Ex. Building Service  
Verify Location in Field

Remove Concrete Pavement as necessary and replace with 7" Reinforced Concrete Pavement

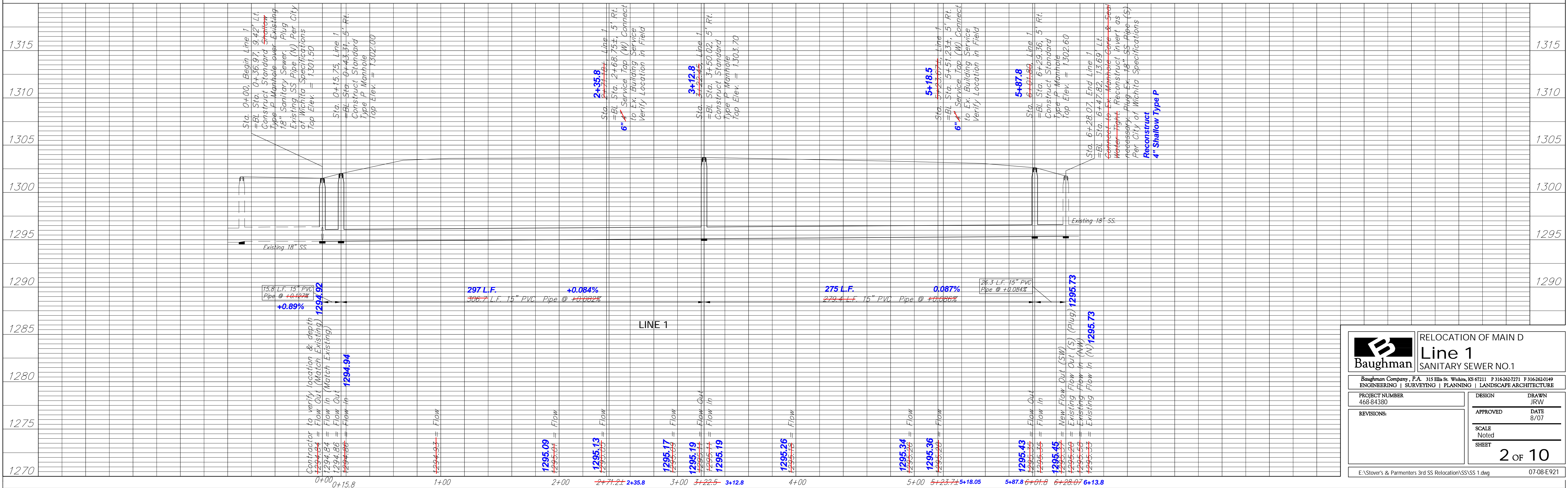
Sta. 6+28.07, End Line 1  
=BL Sta. 6+47.82, 13.69' Lt.  
Connect to Ex. Manhole. Core & Seal Water Tight. Reconstruct invert as necessary. Plug Ex. 18" SS Pipe (S) Per City of Wichita Specifications

Sta. 5+87.8  
=BL Sta. 6+01.80, Line 1  
=BL Sta. 6+29.36, 5' Rt.  
Construct Standard Type P Manhole  
Top Elev. = 1302.60



Note:  
Contractor to restore gravel driveway areas to original condition. Cost to be incidental to project.

Denotes Complete Removal of A.C. or Concrete Pavement



**Baughman** RELOCATION OF MAIN D  
**Line 1**  
SANITARY SEWER NO.1

ENGINEERING | SURVEYING | PLANNING | LANDSCAPE ARCHITECTURE

315 Ellis St. Wichita, KS 67211 F 316-263-7721 F 316-263-0149

PROJECT NUMBER 468-84380	DESIGN DRAWN JRW
REVISIONS:	APPROVED DATE 8/07
	SCALE Noted
	SHEET <b>2 OF 10</b>

E:\Stover & Parmenters 3rd SS Relocation\SS\SS 1.dwg 07-08 E921