

Lateral 12, Main 4, Northwest Interceptor Sewer  
**SANITARY SEWER IMPROVEMENTS**  
 to serve

**SILVERTON ADDITION - PHASE III**  
 CITY OF WICHITA, KANSAS

James L. Armour, P.E. City Engineer

Project Number

468-84245

O.C.A. Number

744279

Duling Construction - Contractor  
 J. Woods - City of Wichita, Inspector  
 Date Released: 11/22/08  
 As-Built  
 Stubs & Risers  
 :pdf APR 01/15/09



Scale: 1" = 150'

**Sheet Index**

Title Sheet	1
Line 1 & Line 1A	2-3
Line 2	4-5
Line 3 & Line 3A	6
Line 4	7
Standard Manhole Detail	8
Ring & Cover Detail	9
Riser Detail	10
Erosion Control Plan	11-12
Erosion Control Details	13-16
Coordinate Sheet	17-18
Copy of Plat	19-20

**GENERAL NOTES:**

- Contractor will be required to provide notice to utility companies a minimum of forty-eight (48) hours prior to any excavation, as follows:  

Kansas One-Call	687-2470
-----------------	----------

The Contractor must notify the following in case of an emergency:

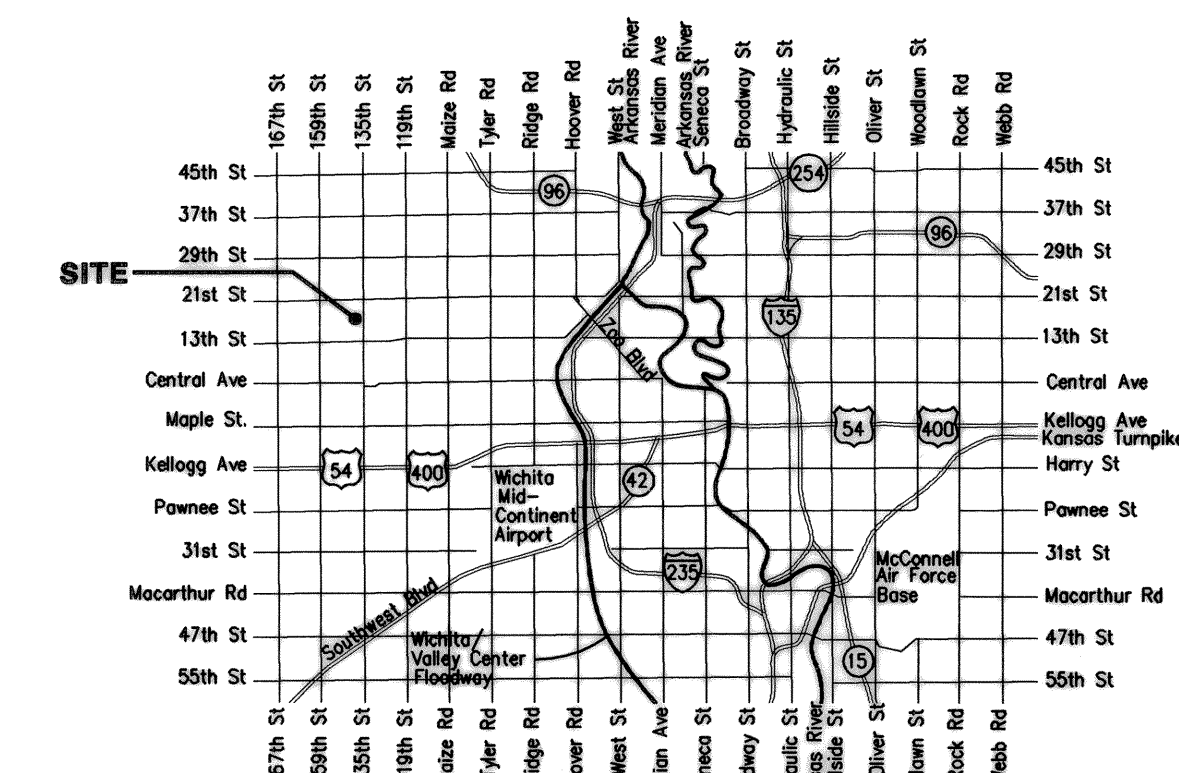
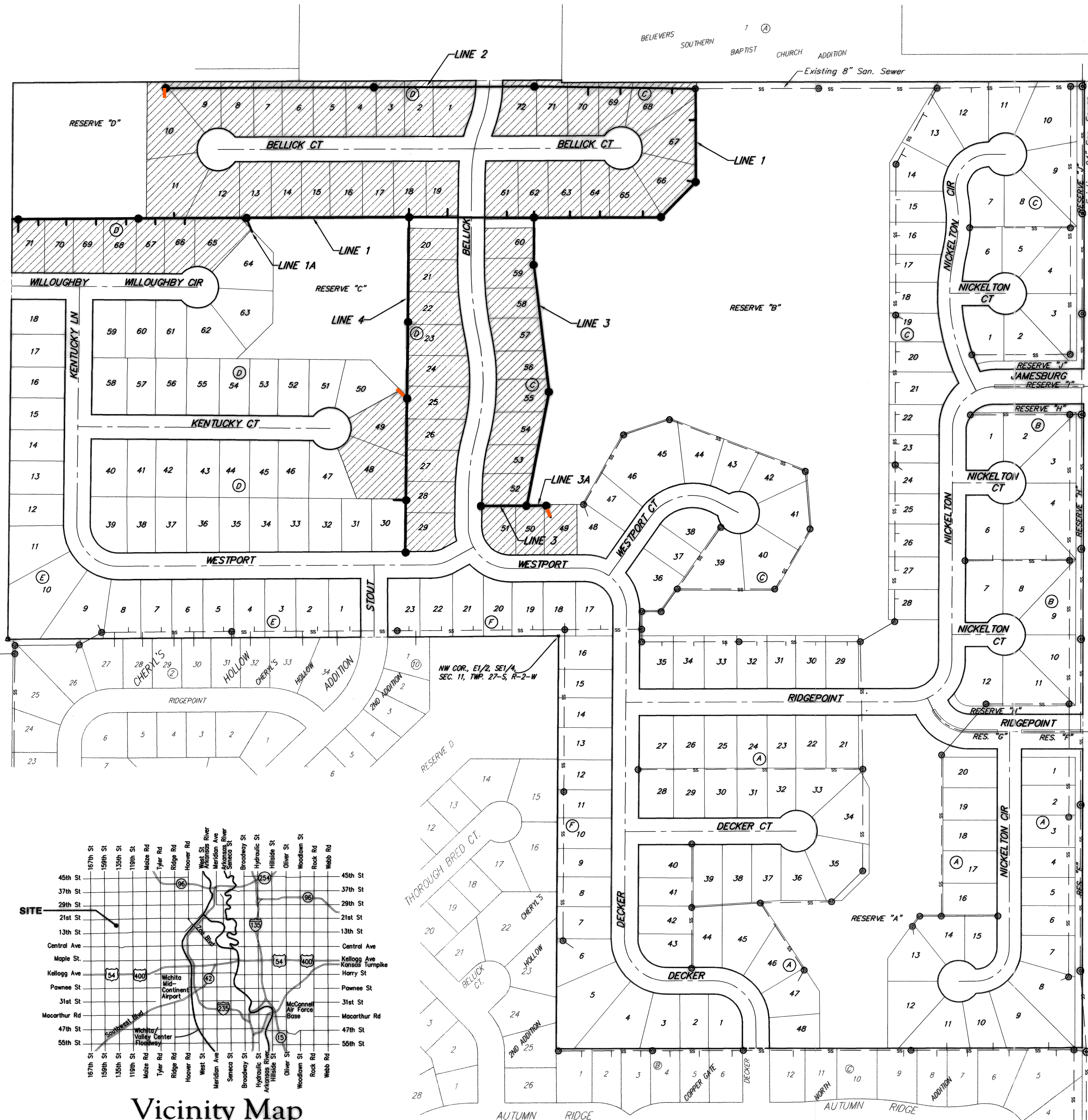
Cox Communications	262-4270
Kansas Gas Service	1-888-482-4950
Westar Energy	383-8650
Aquila Energy	1-800-303-0357
SBC	268-2245
City of Wichita Water Dept.	268-4563
City of Wichita Sewer Maint.	268-4024
City of Wichita Storm Sewer Maint.	268-4090
City of Wichita Traffic Maint.	268-4034
Conoco Phillips Pipeline Co.	1-877-267-2290
Southern Star Pipeline Co.	529-6600
Kinder-Morgan Pipeline Co.	1-888-844-5658
- All existing and proposed erosion control measures including silt fencing, erosion control mat, straw bales, inlet barriers, and const. entrance shall be maintained throughout construction by the contractor and until project is accepted by the City of Wichita. The on-site engineer shall complete weekly reports on the status of erosion control measures. The contractor shall be required to comply with maintenance and/or replacement of erosion control measures as determined by the on-site engineer until project is accepted by City of Wichita.
- The Contractor shall be responsible for maintaining continuous flow of sewage through construction. Contractor's proposed method for maintaining sewage flow shall be approved by the Engineer. Cost of maintaining flow of sewage through construction will not be paid for directly and this cost shall be considered as subsidiary to the other pay items of work.
- All areas disturbed during construction shall be seeded at 300 lbs./acre with Rye Grass immediately following construction in that area. Contractor shall prepare ground per City of Wichita Specifications. All costs associated with seeding shall be included in bid item "Project Seeding"
- Excess excavation shall remain on site and be spread evenly on lots outside of easements and R/W's.
- The developer for this project is Paul E. Kelsey and may be reached at (316) 722-1077

**Benchmarks**

135th St. W. & 13th St. N. - City of Wichita Disc at Southwest Corner of Intersection, 30.00'± S. of C of 13th St. N. 35.00'± W. of C of 135th St. W.  
 Elev. = 1355.65 MSL

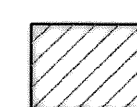
"□" Cut in Top of Curb 10' South of end of Existing Pavement, East Curb adjacent to Lot 12, Block D, Copper Gate North Addition.  
 Elev. = 1362.13 MSL

BM Disc in top Curb Adjacent to Fire Hydrant at E. End of N. Curb Return of Kiwi & Decker, adjacent to Lot 16, Block D, Copper Gate North Addition.  
 Elev. = 1361.04 MSL



Vicinity Map

Benefit District



Baughman Company, P.A. 315 Ellis St. Wichita, KS 67211 P 316-262-7271 F 316-262-0145  
 ENGINEERING | SURVEYING | PLANNING | LANDSCAPE ARCHITECTURE

