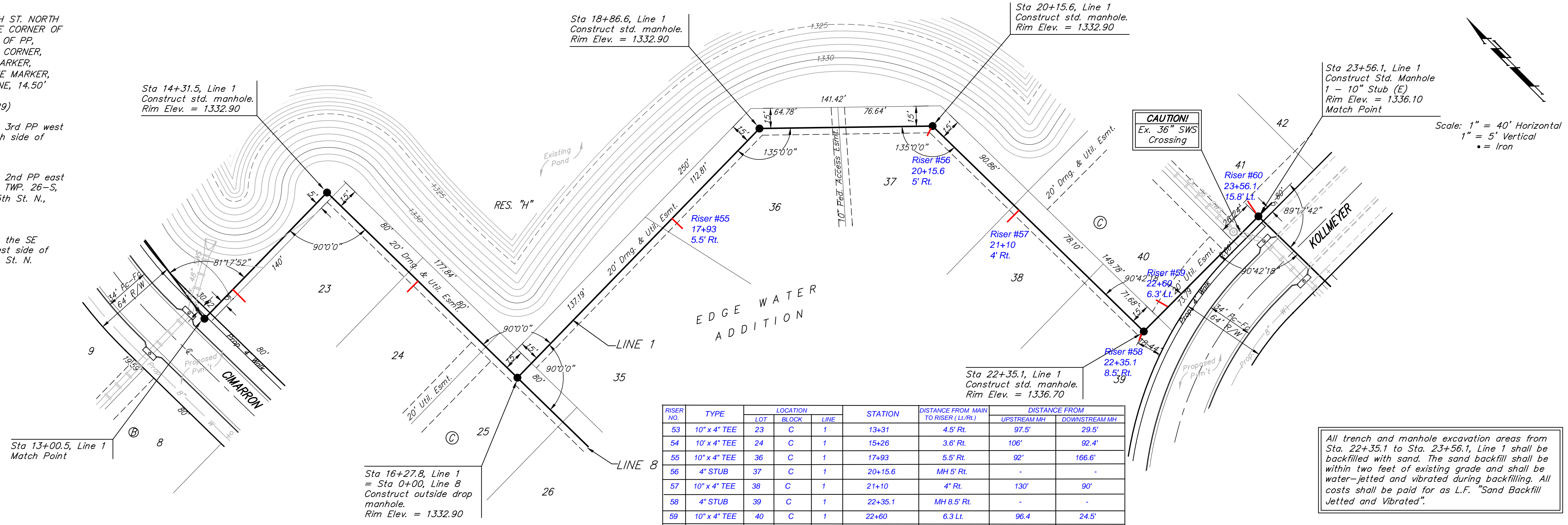


BENCHMARK:
 BM #1: HOOVER AND 45TH ST. NORTH
 - COW BENCHMARK AT NE CORNER OF
 INTERSECTION, 10.20' SSE OF PP,
 58.80' ESE OF PP ON NW CORNER,
 85.50' NE OF GAS LINE MARKER,
 59.00' NORTH OF GAS LINE MARKER,
 28.50' EAST OF CENTERLINE, 14.50'
 NORTH OF CENTERLINE.
 ELEV. = 1335.29 (NGVD 29)

BM #2: Small RR spike in 3rd PP west
 of Hoover St. on the north side of
 45th St. N.
 Elev. = 1337.68

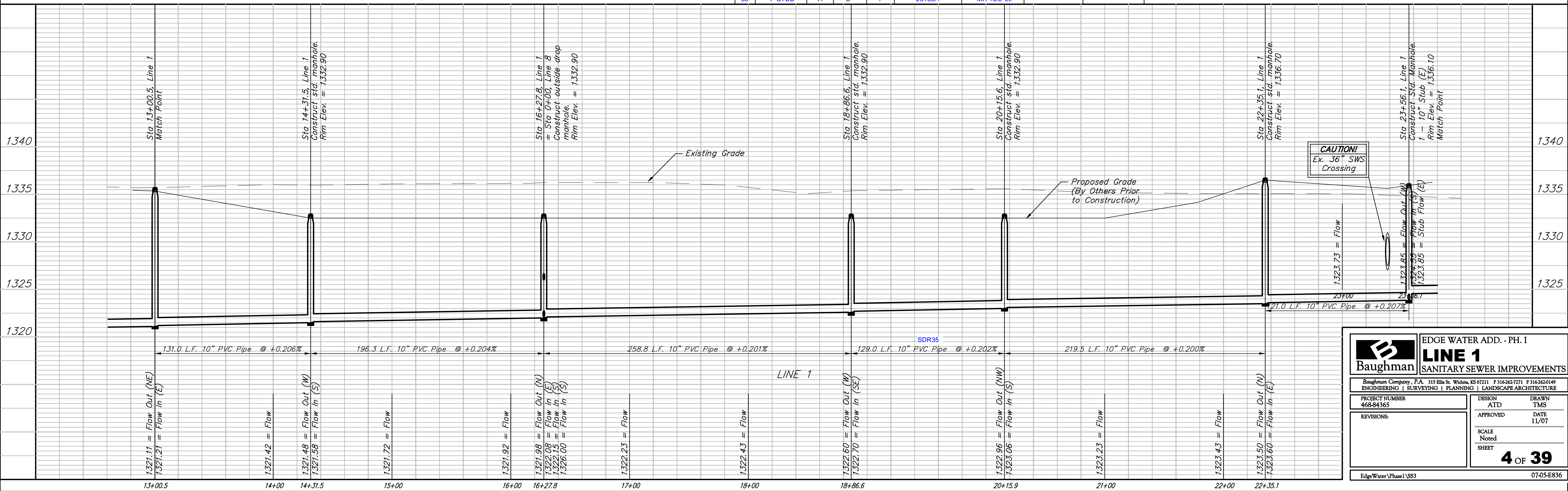
BM #3: Small RR spike in 2nd PP east
 of NW Corner of SEC. 27, TWP. 26-S,
 R-1-W. (North side of 45th St. N.,
 west of Hoover St.)
 Elev. = 1339.57

BM #4: 60d nail in PP at the SE
 corner of exception on west side of
 Hoover St., south of 45th St. N.
 Elev. = 1335.26



RISER NO.	TYPE	LOCATION			STATION	DISTANCE FROM MAIN TO RISER (L./R.)	DISTANCE FROM	
		LOT	BLOCK	LINE			UPSTREAM MH	DOWNSTREAM MH
53	10" x 4" TEE	23	C	1	13+31	4.5' Rt.	97.5'	29.5'
54	10" x 4" TEE	24	C	1	15+26	3.6' Rt.	106'	92.4'
55	10" x 4" TEE	36	C	1	17+93	5.5' Rt.	92'	166.6'
56	4" STUB	37	C	1	20+15.6	MH 5' Rt.	-	-
57	10" x 4" TEE	38	C	1	21+10	4' Rt.	130'	90'
58	4" STUB	39	C	1	22+35.1	MH 8.5' Rt.	-	-
59	10" x 4" TEE	40	C	1	22+60	6.3 Lt.	96.4	24.5'
60	4" STUB	41	C	1	23+56.1	MH 15.8' Lt.	-	-

All trench and manhole excavation areas from Sta. 22+35.1 to Sta. 23+56.1, Line 1 shall be backfilled with sand. The sand backfill shall be within two feet of existing grade and shall be water-jetted and vibrated during backfilling. All costs shall be paid for as L.F. "Sand Backfill Jetted and Vibrated".



Baughman ENGINEERING | SURVEYING | PLANNING | LANDSCAPE ARCHITECTURE

EDGE WATER ADD. - PH. I
LINE 1
 SANITARY SEWER IMPROVEMENTS

PROJECT NUMBER: 468-84365
 DESIGN: ATD
 APPROVED: DATE 11/07

REVISIONS:

SCALE: Noted
 SHEET: **4 OF 39**

EdgeWater\Phase I\SS3 07-05-E836