

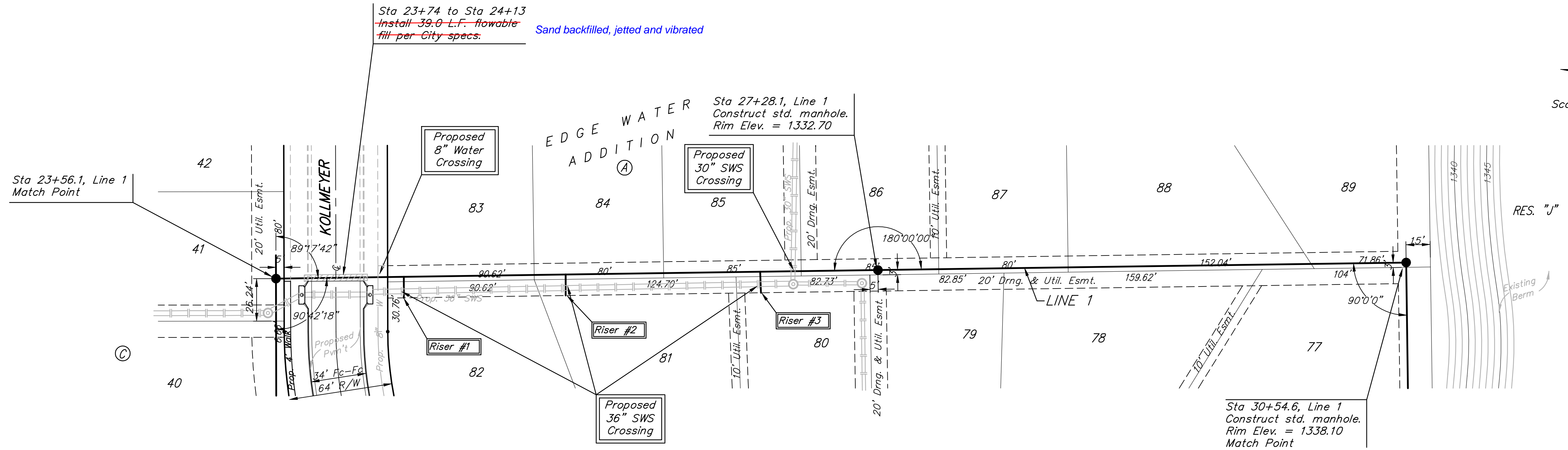
**BENCHMARK:**  
 BM #1: HOOVER AND 45TH ST. NORTH  
 - COW BENCHMARK AT NE CORNER OF  
 INTERSECTION, 10.20' SSE OF PP,  
 58.80' ESE OF PP ON NW CORNER,  
 85.50' NE OF GAS LINE MARKER,  
 59.00' NORTH OF GAS LINE MARKER,  
 28.50' EAST OF CENTERLINE, 14.50'  
 NORTH OF CENTERLINE.  
 ELEV. = 1335.29 (NGVD 29)

BM #2: Small RR spike in 3rd PP west  
 of Hoover St. on the north side of  
 45th St. N.  
 Elev. = 1337.68

BM #3: Small RR spike in 2nd PP east  
 of NW Corner of SEC. 27, TWP. 26-S,  
 R-1-W. (North side of 45th St. N.,  
 west of Hoover St.)  
 Elev. = 1339.57

BM #4: 60d nail in PP at the SE  
 corner of exception on west side of  
 Hoover St., south of 45th St. N.  
 Elev. = 1335.26

Sta 23+74 to Sta 24+13  
 Install 39.0 L.F. flowable  
 fill per City specs. Sand backfilled, jetted and vibrated

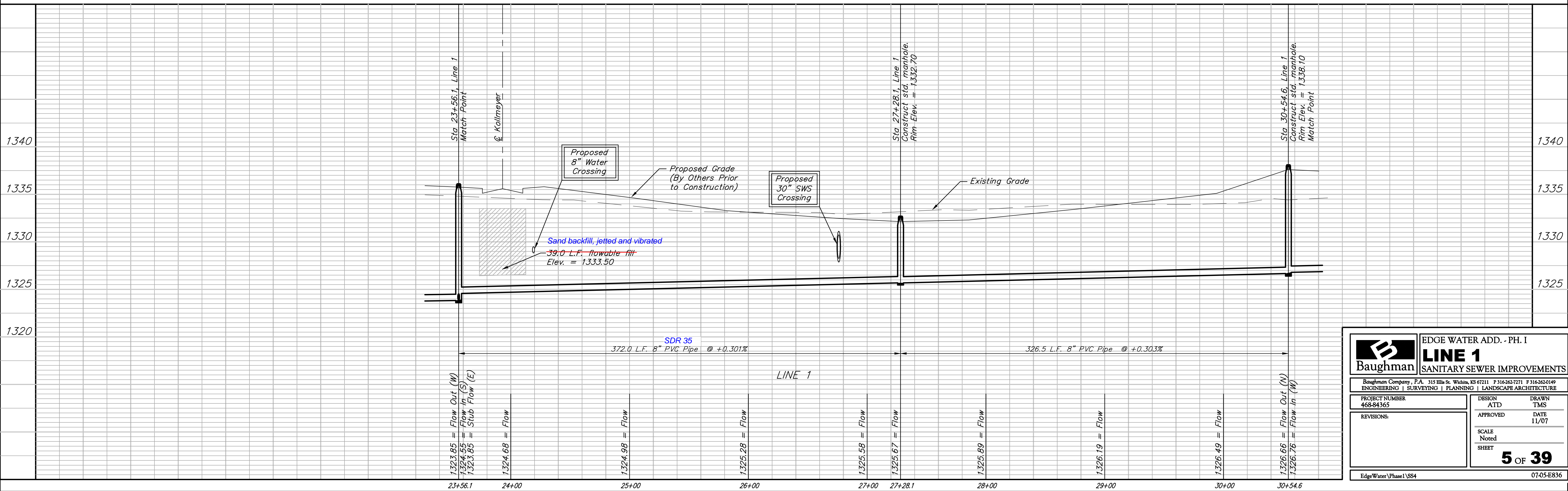


Scale: 1" = 40' Horizontal  
 1" = 5' Vertical  
 • = Iron

SEWER SERVICE TABLE

NUMBER	TYPE	LOCATION			STATION DIRECTION	FOR INFORMATION ONLY APPROXIMATE LENGTH 4" PIPE		DISTANCE FROM MAIN TO RISER (Lt./Rt.)	DISTANCE FROM	
		LOT NO.	BLOCK NO.	LINE NO.		VERTICAL	HORIZONTAL		UPSTREAM MH	DOWNSTREAM MH
1	8" X 4" Tee	82	A	1	24+35/Rt.	7.0'	+3.0' →	12.6' Rt.	293.7'	78.8'
2	8" X 4" Tee	81	A	1	25+35/Rt.	5.0'	-3.0' ←	11.5' Rt.	192.4'	180.1'
3	8" X 4" Tee	80	A	1	26+55/Rt.	3.5'	-3.0' ←	14.3' Rt.	77.3'	295.2'

NOTE: Vertical Riser Pipe shall be extended to 2' minimum above ground water elevation and 4' maximum below proposed ground elevation.



**Baughman** ENGINEERING | SURVEYING | PLANNING | LANDSCAPE ARCHITECTURE

EDGE WATER ADD. - PH. I  
**LINE 1**  
 SANITARY SEWER IMPROVEMENTS

PROJECT NUMBER: 468-84365  
 DESIGN: ATD  
 DRAWN: TMS  
 APPROVED: DATE 11/07  
 SCALE: Noted  
 SHEET: 5 OF 39

EdgeWater\Phase I\SS4 07-05-E836