

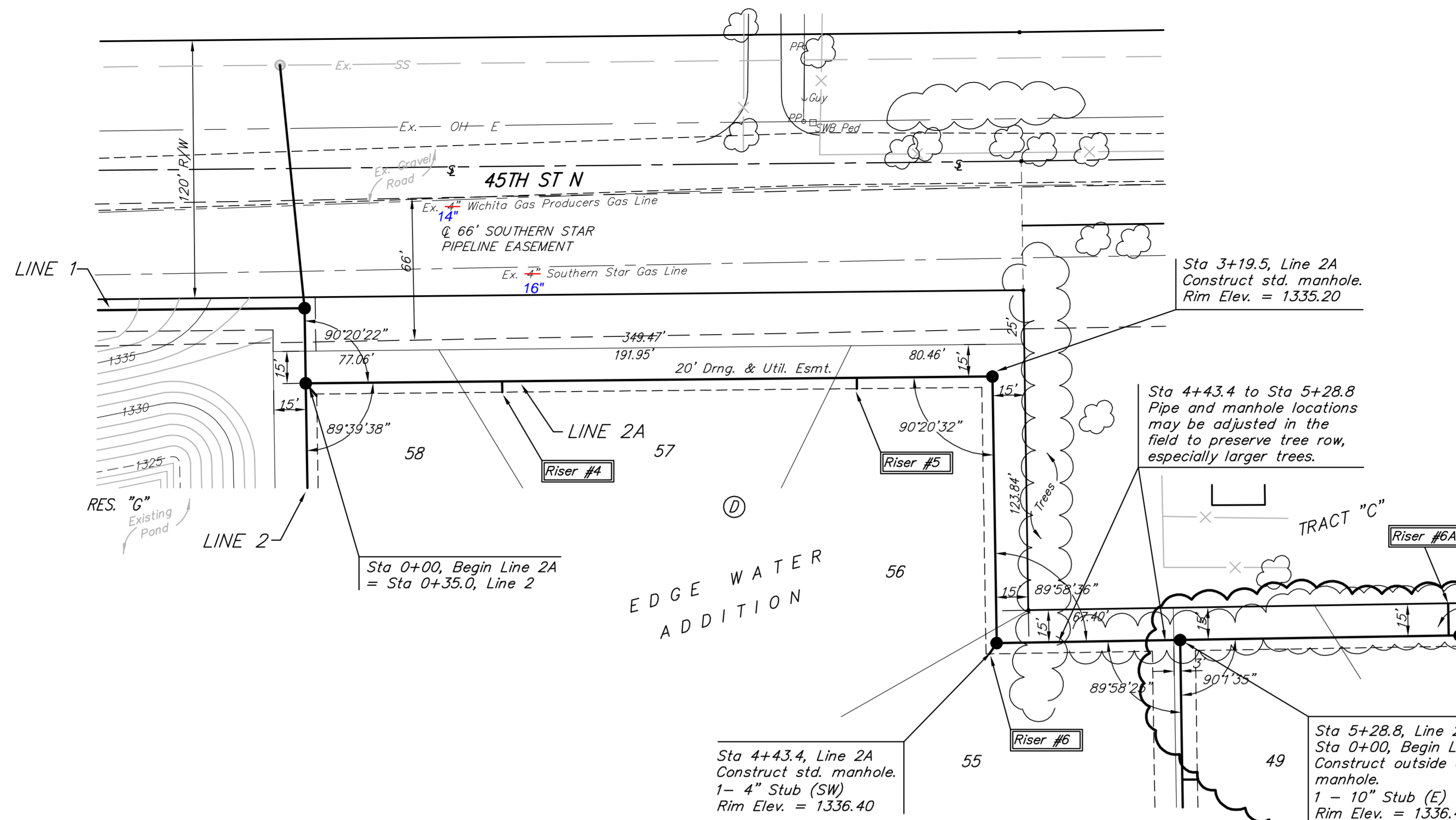
BENCHMARK:
 BM #1: HOOVER AND 45TH ST. NORTH - COW BENCHMARK AT NE CORNER OF INTERSECTION, 10.20' SSE OF PP, 58.80' ESE OF PP ON NW CORNER, 85.50' NE OF GAS LINE MARKER, 59.00' NORTH OF GAS LINE MARKER, 28.50' EAST OF CENTERLINE, 14.50' NORTH OF CENTERLINE.
 ELEV. = 1335.29 (NGVD 29)

BM #2: Small RR spike in 3rd PP west of Hoover St. on the north side of 45th St. N.
 Elev. = 1337.68

BM #3: Small RR spike in 2nd PP east of NW Corner of SEC. 27, TWP. 26-S, R-1-W. (North side of 45th St. N., west of Hoover St.)
 Elev. = 1339.57

BM #4: 60d nail in PP at the SE corner of exception on west side of Hoover St., south of 45th St. N.
 Elev. = 1335.26

Remove trees only as **ABSOLUTELY** necessary for sanitary sewer construction and only with permission of Developer or Baughman Co. Cost of removal to be incidental to lump sum bid item "Site Clearing & Restoration".



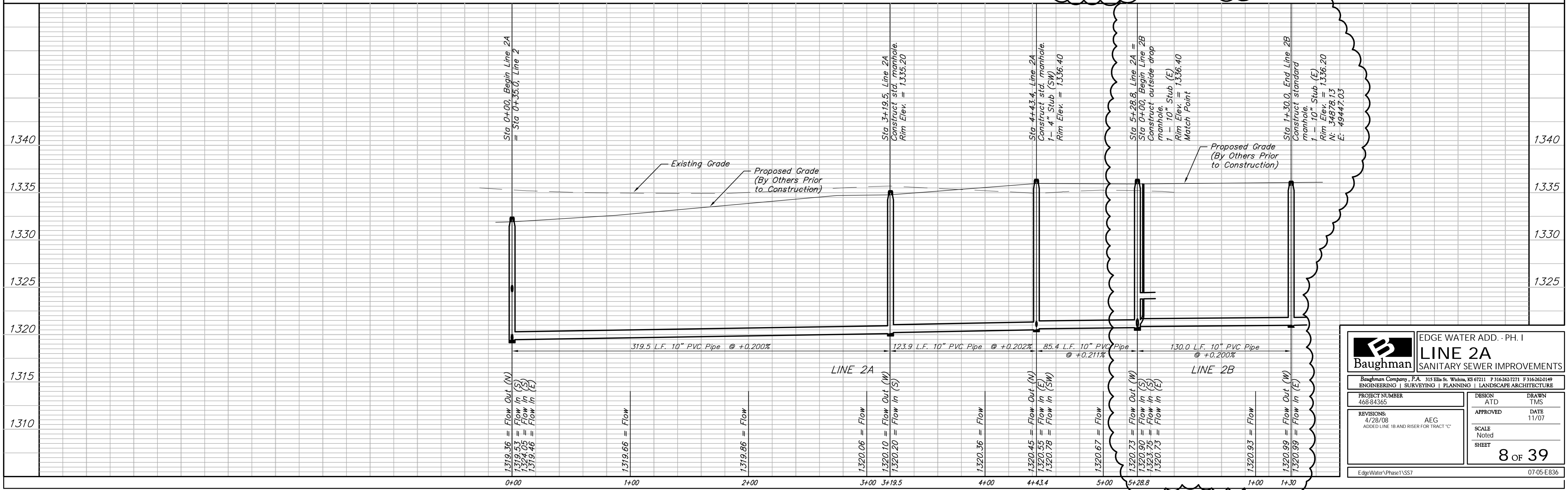
RISER NO.	DISTANCE FROM MAIN TO RISER (L/R)	DISTANCE FROM	
		UPSTREAM MH	DOWNSTREAM MH
4	4.5' Rt.	221.6'	91'
5	5.1' Rt.	57'	255.6'
6	4' Rt. of MH	-	-
6A	14' Lt.	11.5'	15'

Scale: 1" = 40' Horizontal
 1" = 5' Vertical
 • = Iron

SEWER SERVICE TABLE

NUMBER	TYPE	LOCATION			FOR INFORMATION ONLY		
		LOT NO.	BLOCK NO.	LINE NO.	STATION \ DIRECTION	APPROXIMATE LENGTH 4" PIPE	VERTICAL
4	10" X 4" Tee	57	D	2A	0+91/Rt.	9.0'	5.0'
5	10" X 4" Tee	56	D	2A	2+56/Rt.	10.0'	5.0'
6	4" Stub	55	D	2A	4+43.4/Rt.	11.5'	5.0'
6A	10" X 4" Tee	Tract "C"	D	2B	1+25/Lt.	11.5'	15.0'

NOTE: Vertical Riser Pipe shall be extended to 2' minimum above ground water elevation and 4' maximum below proposed ground elevation.



Baughman ENGINEERING | SURVEYING | PLANNING | LANDSCAPE ARCHITECTURE

EDGE WATER ADD. - PH. I
LINE 2A
 SANITARY SEWER IMPROVEMENTS

PROJECT NUMBER: 468-84365
 DESIGN: ATD
 DRAWN: TMS

REVISIONS: 4/28/08 AEG
 APPROVED: DATE 11/07
 ADDED LINE 18 AND RISER FOR TRACT 'C'
 SCALE: Noted
 SHEET: 8 OF 39

EdgeWaterPhase1\SS7 07.05.E836