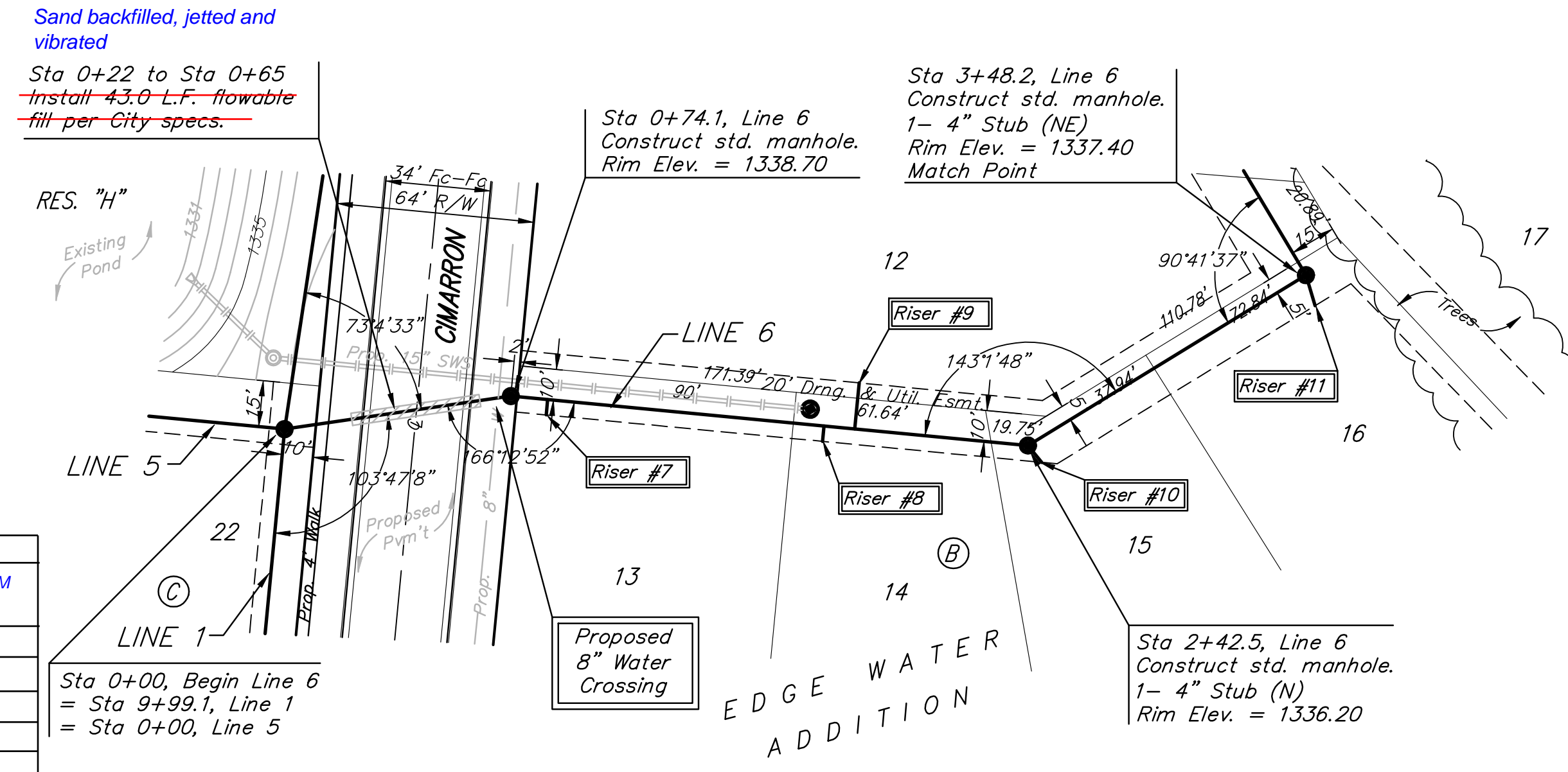
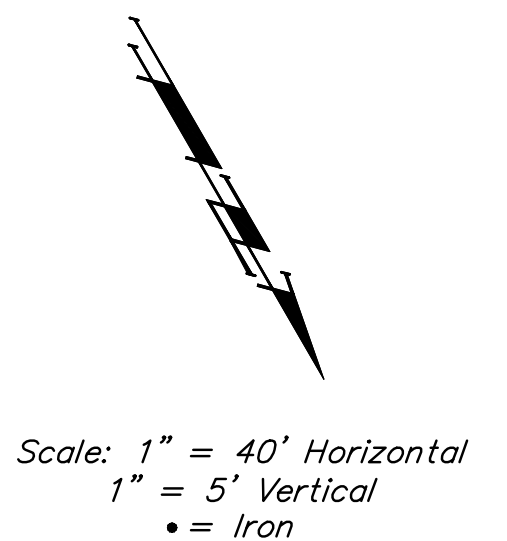


BENCHMARK:
 BM #1: HOOVER AND 45TH ST. NORTH
 - COW BENCHMARK AT NE CORNER OF
 INTERSECTION, 10.20' SSE OF PP,
 58.80' ESE OF PP ON NW CORNER,
 85.50' NE OF GAS LINE MARKER,
 59.00' NORTH OF GAS LINE MARKER,
 28.50' EAST OF CENTERLINE, 14.50'
 NORTH OF CENTERLINE.
 ELEV. = 1335.29 (NGVD 29)

BM #2: Small RR spike in 3rd PP west
 of Hoover St. on the north side of
 45th St. N.
 Elev. = 1337.68

BM #3: Small RR spike in 2nd PP east
 of NW Corner of SEC. 27, TWP. 26-S,
 R-1-W. (North side of 45th St. N.,
 west of Hoover St.)
 Elev. = 1339.57

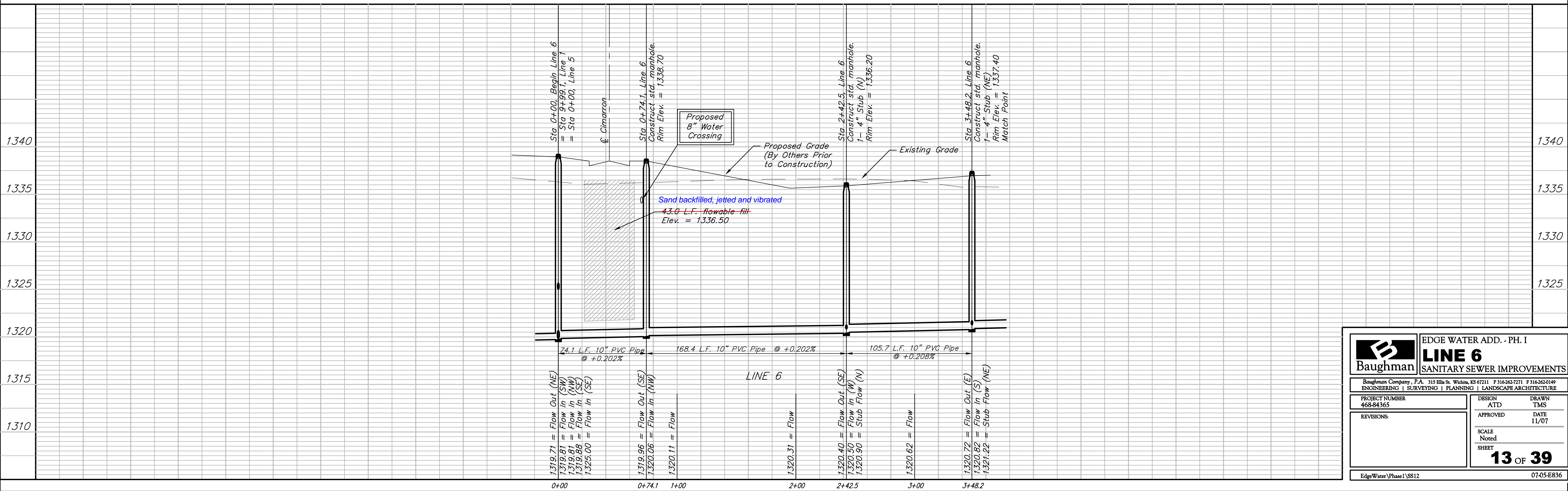
BM #4: 60d nail in PP at the SE
 corner of exception on west side of
 Hoover St., south of 45th St. N.
 Elev. = 1335.26



SEWER SERVICE TABLE

NUMBER	TYPE	LOCATION			FOR INFORMATION ONLY		DISTANCE FROM MAIN TO RISER (L./Rt.)	DISTANCE FROM		
		LOT NO.	BLOCK NO.	LINE NO.	STATION DIRECTION	APPROXIMATE LENGTH 4" PIPE VERTICAL		HORIZONTAL	UPSTREAM MH	DOWNSTREAM MH
7	10" X 4" Tee	13	B	6	0+85/Rt.	14.0'	5.0'	5' Rt.	154.7'	12.6'
8	10" X 4" Tee	14	B	6	1+75/Rt.	12.0'	-5.0'	4' Rt.	68.2'	99.1'
9	10" X 4" Tee	12	B	6	1+85/Lt.	12.0'	-15.0'	14.8' Lt.	58'	109.3'
10	4" Stub	15	B	6	2+42.5/Rt.	11.5'	-5.0'	3' N out of MH	-	-
11	4" Stub	16	B	6	3+48.2/Rt.	12.5'	-5.0'	4' N out of MH	-	-

NOTE: Vertical Riser Pipe shall be extended to 2' minimum above ground water elevation and 4' maximum below proposed ground elevation.



Baughman ENGINEERING | SURVEYING | PLANNING | LANDSCAPE ARCHITECTURE

EDGE WATER ADD. - PH. I
LINE 6
 SANITARY SEWER IMPROVEMENTS

PROJECT NUMBER: 468-84365
 DESIGN: ATD
 DRAWN: TMS
 APPROVED: [Signature]
 DATE: 11/07

SCALE: Noted
 SHEET: **13 OF 39**

EdgeWater\Phase1\SS12 07-05-E836