

**BENCHMARK:**  
 BM #1: HOOVER AND 45TH ST. NORTH  
 - COW BENCHMARK AT NE CORNER OF  
 INTERSECTION, 10.20' SSE OF PP,  
 58.80' ESE OF PP ON NW CORNER,  
 85.50' NE OF GAS LINE MARKER,  
 59.00' NORTH OF GAS LINE MARKER,  
 28.50' EAST OF CENTERLINE, 14.50'  
 NORTH OF CENTERLINE.  
 ELEV. = 1335.29 (NGVD 29)

BM #2: Small RR spike in 3rd PP west  
 of Hoover St. on the north side of  
 45th St. N.  
 Elev. = 1337.68

BM #3: Small RR spike in 2nd PP east  
 of NW corner of SEC. 27, TWP. 26-S,  
 R-1-W. (North side of 45th St. N.,  
 west of Hoover St.)  
 Elev. = 1339.57

BM #4: 60d nail in PP at the SE  
 corner of exception on west side of  
 Hoover St., south of 45th St. N.  
 Elev. = 1335.26

Sta 3+80 to Sta 10+50  
 Riser locations may be  
 adjusted north & south in  
 the field as needed to  
 preserve tree row,  
 especially larger trees.

Scale: 1" = 40' Horizontal  
 1" = 5' Vertical

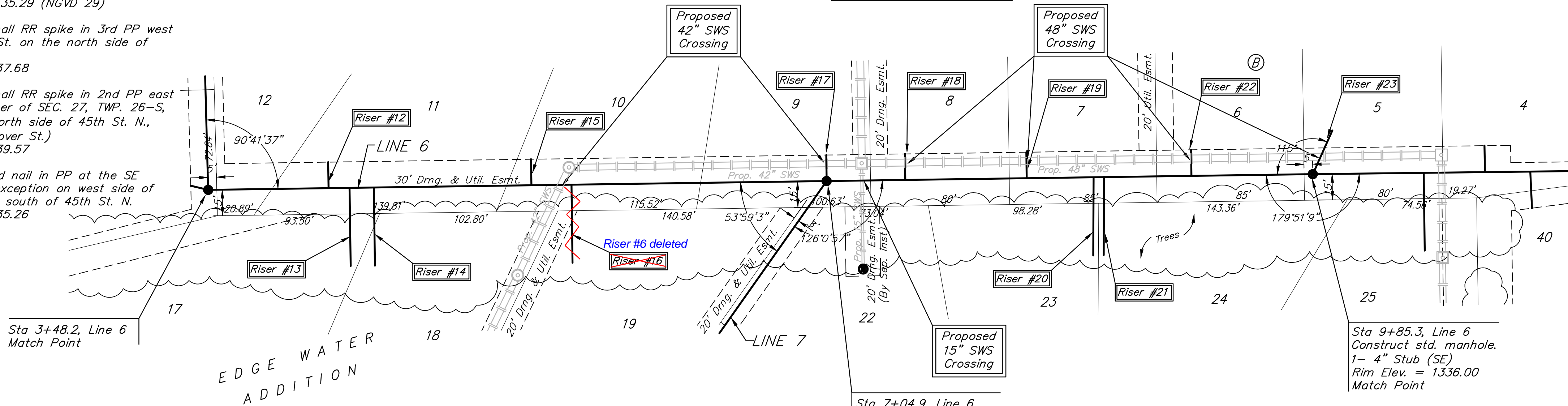
RISER NO.	DISTANCE FROM MAIN TO RISER (Lt./Rt.)	DISTANCE FROM	
		UPSTREAM MH	DOWNSTREAM MH
12	14.5' Lt.	283.7'	71'
13	44.3'	272.2'	82.5'
14	44' Rt.	255.7'	99'
15	16' Lt.	172.7'	182'
17	14.3' Lt.	-	-
18	14' Lt.	214.5'	51.4'
19	13.9'	163.1'	117.4'
20	44.2' Rt.	97.1'	155.6'
21	42.5' Rt.	58.9'	160.6'
22	14' Lt.	53.9'	214.5'
23	3.5' S & 15' Lt. of MH	264.5'	3.5'

SEWER SERVICE TABLE

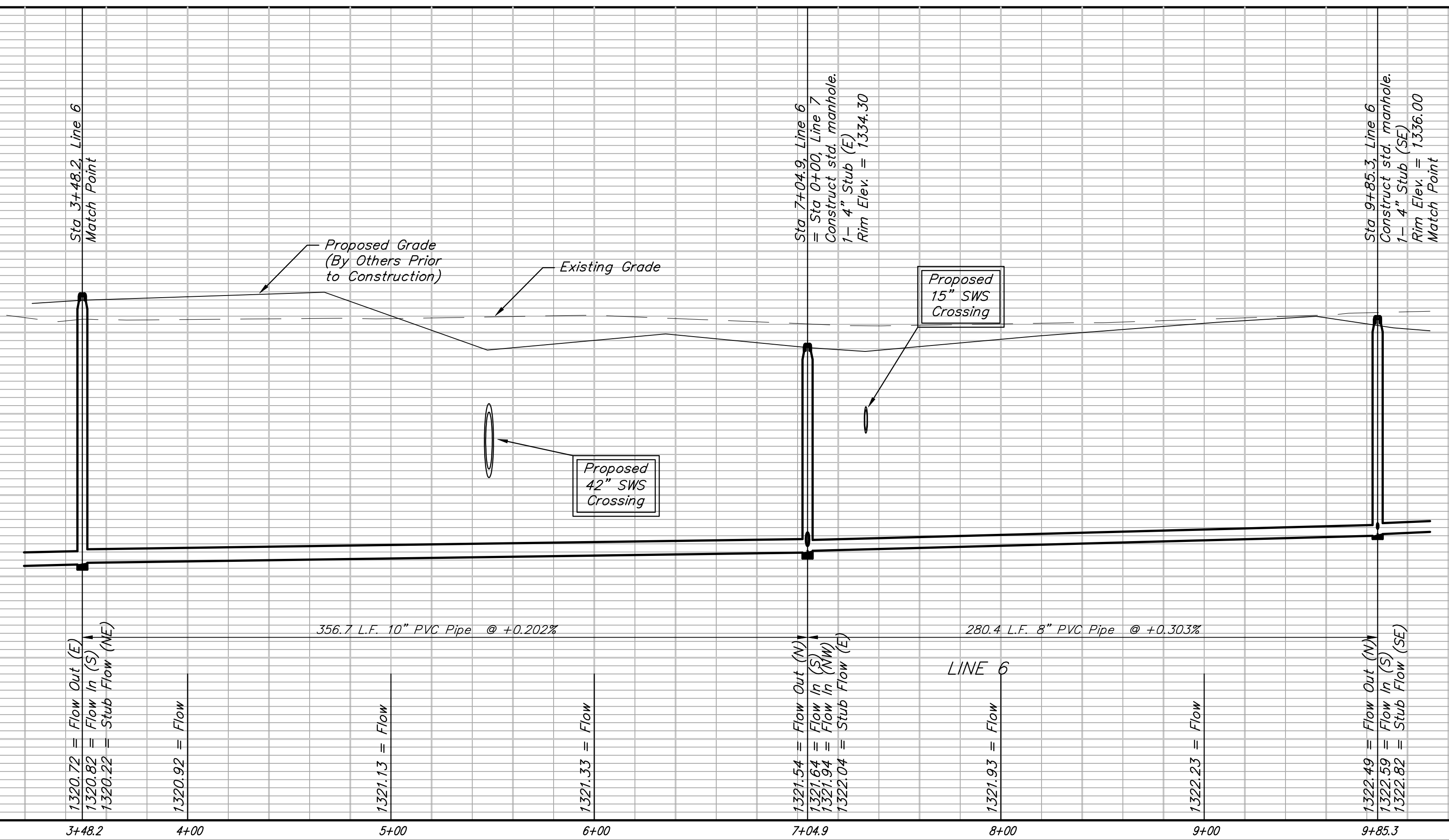
NUMBER	TYPE	LOCATION			FOR INFORMATION ONLY		
		LOT NO.	BLOCK NO.	LINE NO.	STATION \ DIRECTION	APPROXIMATE LENGTH 4" PIPE	VERTICAL
12	10" X 4" Tee	11	B	6	4+17/Lt.	12.5'	45.0'
13	10" X 4" Tee	17	B	6	4+30/Rt.	12.5'	45.0'
14	10" X 4" Tee	18	B	6	4+44/Rt.	12.5'	45.0'
15	10" X 4" Tee	10	B	6	5+34/Lt.	10.0'	15.0'
16	10" X 4" Tee	19	B	6	5+58/Rt.	9.0'	45.0'
17	4" Stub	9	B	6	7+04.9/Lt.	12.5'	15.0'
18	8" X 4" Tee	8	B	6	7+50/Lt.	8.5'	15.0'
19	8" X 4" Tee	7	B	6	8+20/Lt.	9.0'	15.0'
20	8" X 4" Tee	23	B	6	8+59/Rt.	9.0'	45.0'
21	8" X 4" Tee	24	B	6	8+65/Rt.	9.0'	45.0'
22	8" X 4" Tee	6	B	6	9+15/Lt.	9.0'	15.0'
23	4" Stub	5	B	6	9+85.3/Lt.	13.0'	15.0'

NOTE: Vertical Riser Pipe shall be extended to 2' minimum above ground water elevation and 4' maximum below proposed ground elevation.

Remove trees only as **ABSOLUTELY** necessary for sanitary sewer construction and only with permission of Developer or Baughman Co. Cost of removal to be incidental to lump sum bid item "Site Clearing & Restoration".



EDGE WATER ADDITION



**Baughman** ENGINEERING | SURVEYING | PLANNING | LANDSCAPE ARCHITECTURE

EDGE WATER ADD. - PH. I  
**LINE 6**  
 SANITARY SEWER IMPROVEMENTS

PROJECT NUMBER: 468-84365  
 DESIGN: ATD  
 DRAWN: TMS  
 APPROVED: [Signature]  
 DATE: 11/07  
 SCALE: Noted  
 SHEET: 14 OF 39

EdgeWater\Phase1\SS13 07-05-E836