

SEWER SERVICE TABLE

NUMBER	TYPE	LOCATION			STATION \ DIRECTION	APPROXIMATE LENGTH 4" PIPE		DISTANCE FROM MAIN TO RISER (L/R)	DISTANCE FROM	
		LOT NO.	BLOCK NO.	LINE NO.		VERTICAL	HORIZONTAL		UPSTREAM MH	DOWNSTREAM MH
24	8" X 4" Tee	25	B	6	10+49/Rt.	8.5'	45.0'	41.7' Rt.	261'	53.2'
25	8" X 4" Tee	4	B	6	10+84/Lt.	8.0'	15.0'	13' Lt.	224'	90.2'
26	8" X 4" Tee	40	B	6	11+10/Rt.	8.0'	21.0'	20.2' Rt.	198.7'	115.5'
27	8" X 4" Tee	3	B	6	11+55/Lt.	8.0'	5.0'	5' Lt.	154.7'	159.5'
28	8" X 4" Tee	41	B	6	11+80/Rt.	8.5'	15.0'	14' Rt.	128.2'	186'
29	8" X 4" Tee	2	B	6	12+30/Lt.	8.5'	5.0'	6' Lt.	78.1'	236.1'
30	4" Stub	1	B	6	13+05.3/Lt.	9.5'	8.0'	MH 2'S & 9.3' Lt.	-	-
31	4" Stub	42	B	6	13+05.3/Rt.	9.5'	12.0'	MH 4.5' S & 12.5' Rt.	-	-

NOTE: Vertical Riser Pipe shall be extended to 2' minimum above ground water elevation and 4' maximum below proposed ground elevation.

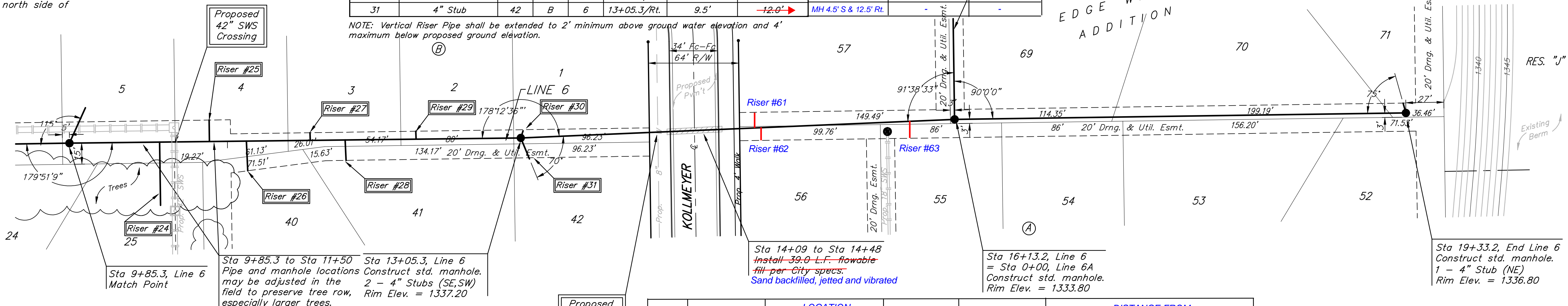
BENCHMARK:
 BM #1: HOOVER AND 45TH ST. NORTH - COW BENCHMARK AT NE CORNER OF INTERSECTION, 10.20' SSE OF PP, 58.80' ESE OF PP ON NW CORNER, 85.50' NE OF GAS LINE MARKER, 59.00' NORTH OF GAS LINE MARKER, 28.50' EAST OF CENTERLINE, 14.50' NORTH OF CENTERLINE. ELEV. = 1335.29 (NGVD 29)

BM #3: Small RR spike in 2nd PP east of NW Corner of SEC. 27, TWP. 26-S, R-1-W. (North side of 45th St. N., west of Hoover St.) Elev. = 1339.57

BM #4: 60d nail in PP at the SE corner of exception on west side of Hoover St., south of 45th St. N. Elev. = 1335.26

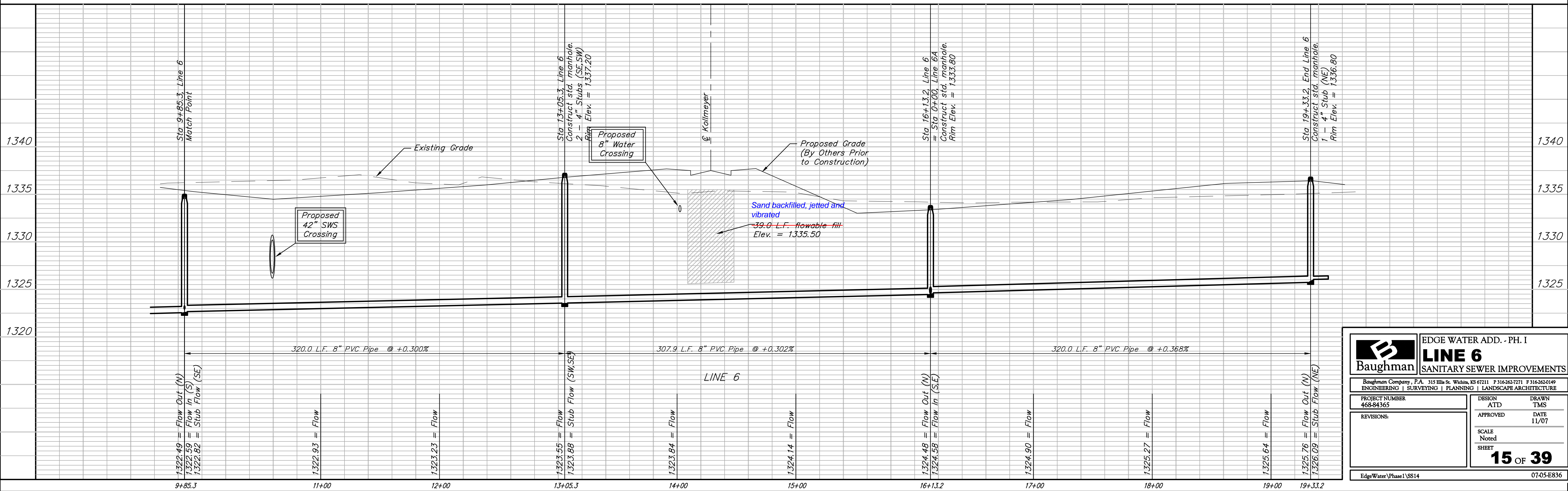
BM #2: Small RR spike in 3rd PP west of Hoover St. on the north side of 45th St. N. Elev. = 1337.68

Scale: 1" = 40' Horizontal
 1" = 5' Vertical
 • = Iron



Remove trees only as **ABSOLUTELY** necessary for sanitary sewer construction and only with permission of Developer or Baughman Co. Cost of removal to be incidental to lump sum bid item "Site Clearing & Restoration".

RISER NO.	TYPE	LOCATION			DIRECTION/ STATION	DISTANCE FROM MAIN TO RISER (L/R)	DISTANCE FROM	
		LOT NO.	BLOCK NO.	LINE NO.			UPSTREAM MH	DOWNSTREAM MH
61	8" x 4" Tee	56	A	6	14+71	10.8' Lt.	140.75'	166.8'
62	8" x 4" Tee	57	A	6	14+76	9' Rt.	136.75'	170.8'
63	8" x 4" Tee	55	A	6	15+80	11.5' Rt.	36'	271.55'



Baughman ENGINEERING | SURVEYING | PLANNING | LANDSCAPE ARCHITECTURE

EDGE WATER ADD. - PH. I
LINE 6
 SANITARY SEWER IMPROVEMENTS

PROJECT NUMBER: 468-84365
 DESIGN: TMS
 APPROVED: TMS
 DATE: 11/07

SCALE: Noted
 SHEET: **15 OF 39**

EdgeWater\Phase1\SS14 07-05-E836