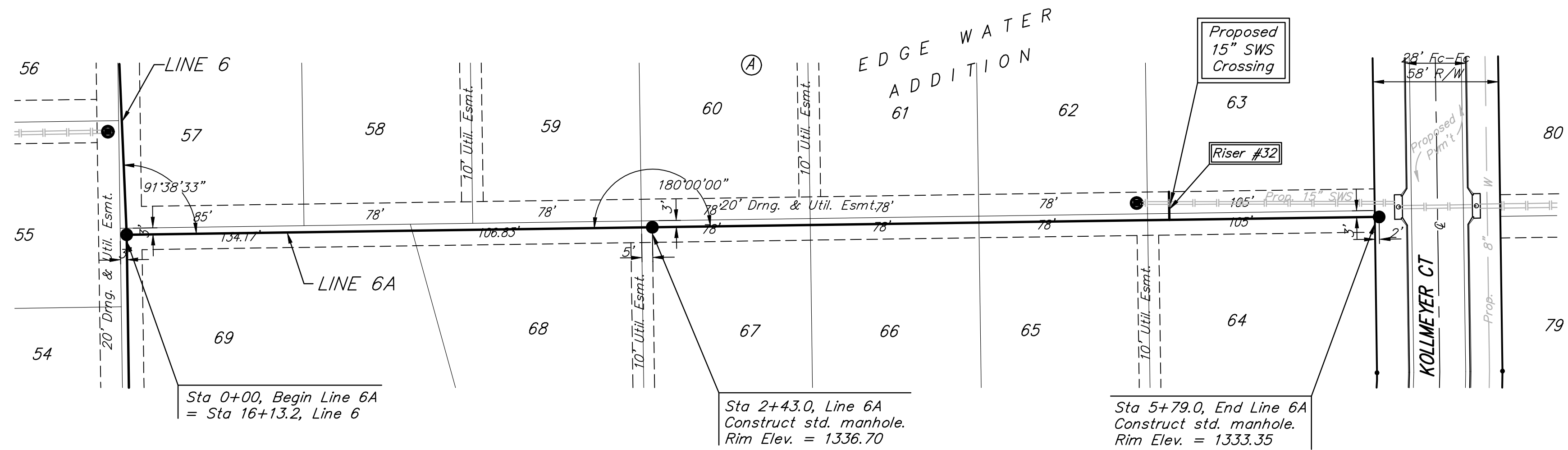


**BENCHMARK:**  
 BM #1: HOOVER AND 45TH ST. NORTH  
 - COW BENCHMARK AT NE CORNER OF  
 INTERSECTION, 10.20' SSE OF PP,  
 58.80' ESE OF PP ON NW CORNER,  
 85.50' NE OF GAS LINE MARKER,  
 59.00' NORTH OF GAS LINE MARKER,  
 28.50' EAST OF CENTERLINE, 14.50'  
 NORTH OF CENTERLINE.  
 ELEV. = 1335.29 (NGVD 29)

BM #2: Small RR spike in 3rd PP west  
 of Hoover St. on the north side of  
 45th St. N.  
 Elev. = 1337.68

BM #3: Small RR spike in 2nd PP east  
 of NW Corner of SEC. 27, TWP. 26-S,  
 R-1-W. (North side of 45th St. N.,  
 west of Hoover St.)  
 Elev. = 1339.57

BM #4: 60d nail in PP at the SE  
 corner of exception on west side of  
 Hoover St., south of 45th St. N.  
 Elev. = 1335.26

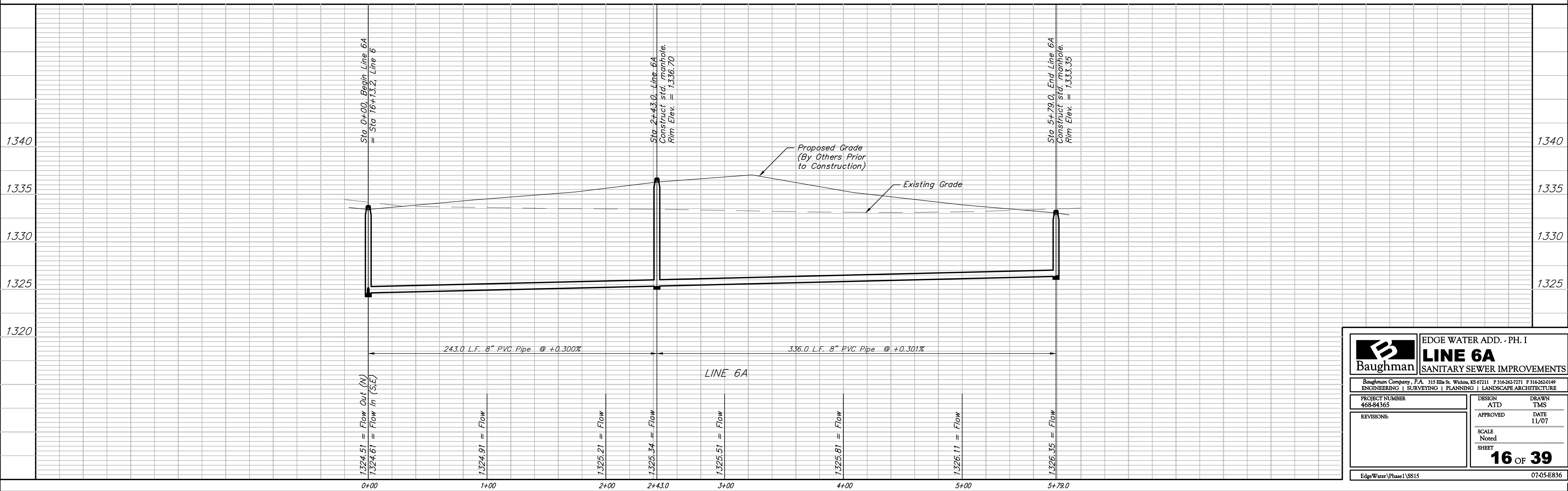


Scale: 1" = 40' Horizontal  
 1" = 5' Vertical  
 • = Iron

SEWER SERVICE TABLE

DISTANCE FROM MAIN TO RISER (L/Lt.)	DISTANCE FROM		NUMBER	TYPE	LOCATION			FOR INFORMATION ONLY		
	UPSTREAM MH	DOWNSTREAM MH			LOT NO.	BLOCK NO.	LINE NO.	STATION\ DIRECTION	APPROXIMATE LENGTH 4" PIPE	
12.8' Lt.	95.7'	240.2'	32	8" X 4" Tee	63	A	6A	4+82/Lt.	VERTICAL 4.0'	HORIZONTAL 13.6'

NOTE: Vertical Riser Pipe shall be extended to 2' minimum above ground water elevation and 4' maximum below proposed ground elevation.



**Baughman** ENGINEERING | SURVEYING | PLANNING | LANDSCAPE ARCHITECTURE

EDGE WATER ADD. - PH. I  
**LINE 6A**  
 SANITARY SEWER IMPROVEMENTS

PROJECT NUMBER: 468-84365  
 DESIGN: ATD  
 DRAWN: TMS  
 APPROVED: [Signature]  
 DATE: 11/07

SCALE: Noted  
 SHEET: **16 OF 39**

EdgeWater\Phase1\SS15 07-05-E836