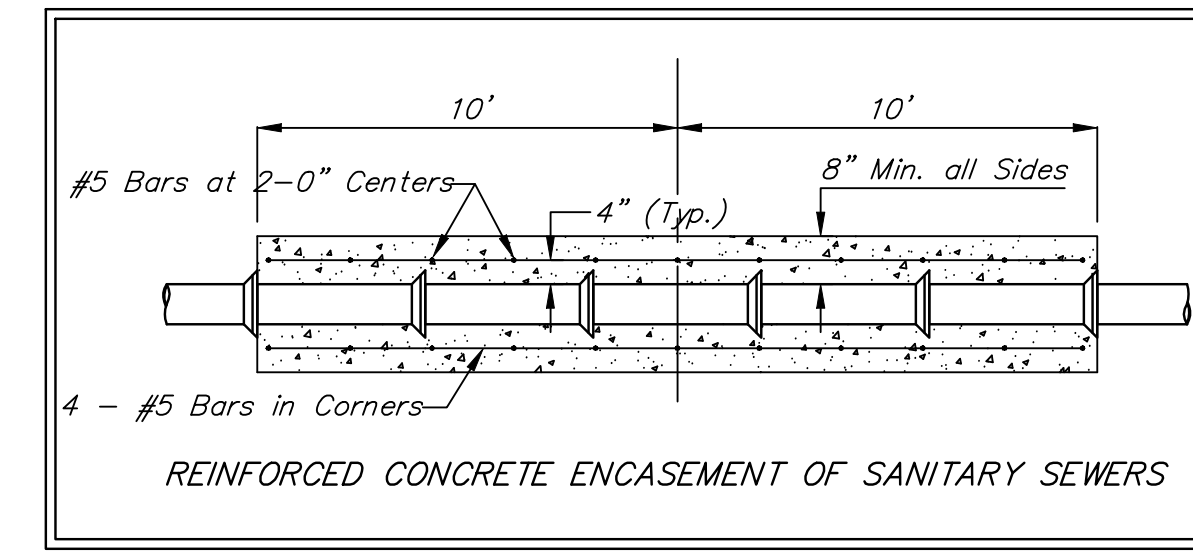


BENCHMARK:
 BM #1: HOOVER AND 45TH ST. NORTH
 - COW BENCHMARK AT NE CORNER OF
 INTERSECTION, 10.20' SSE OF PP,
 58.80' ESE OF PP ON NW CORNER,
 85.50' NE OF GAS LINE MARKER,
 59.00' NORTH OF GAS LINE MARKER,
 28.50' EAST OF CENTERLINE, 14.50'
 NORTH OF CENTERLINE.
 ELEV. = 1335.29 (NGVD 29)

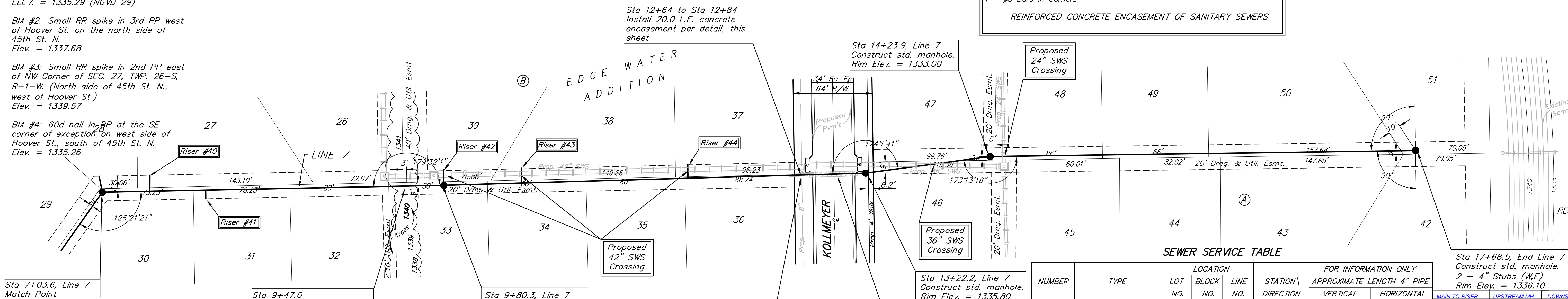
BM #2: Small RR spike in 3rd PP west
 of Hoover St. on the north side of
 45th St. N.
 Elev. = 1337.68

BM #3: Small RR spike in 2nd PP east
 of NW Corner of SEC. 27, TWP. 26-S,
 R-1-W. (North side of 45th St. N.,
 west of Hoover St.)
 Elev. = 1339.57

BM #4: 60d nail in 2nd PP at the SE
 corner of exception on west side of
 Hoover St., south of 45th St. N.
 Elev. = 1335.26



Scale: 1" = 40' Horizontal
 1" = 5' Vertical
 • = Iron



Remove trees only as **ABSOLUTELY**
 necessary for sanitary sewer
 construction and only with permission
 of Developer or Baughman Co. Cost
 of removal to be incidental to lump
 sum bid item "Site Clearing &
 Restoration".

Sta 9+47.0
 Pipe and manhole locations
 may be adjusted in the
 field to preserve tree row,
 especially larger trees.

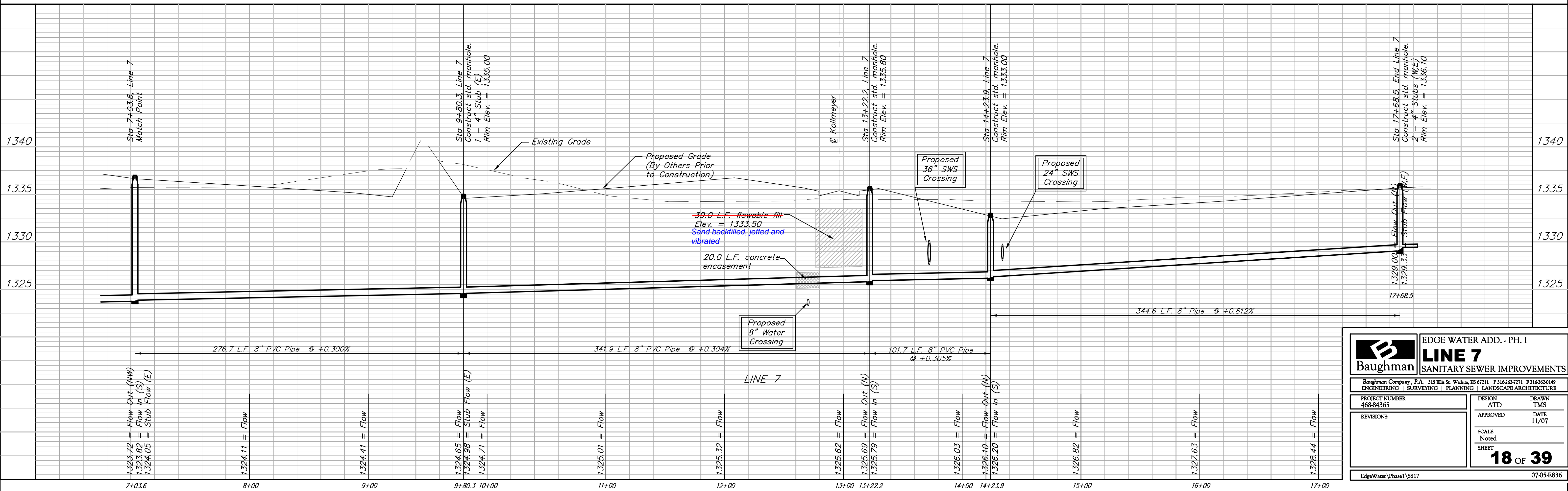
Sta 9+80.3, Line 7
 Construct std. manhole.
 1 - 4" Stub (E)
 Rim Elev. = 1335.00

Sta 13+22.2, Line 7
 Construct std. manhole.
 Rim Elev. = 1335.80

Sta 12+73 to Sta 13+12
 Install 39.0 L.F. flowable
 fill per City specs.
 Sand backfilled, jetted and vibrated

NUMBER	TYPE	LOCATION				FOR INFORMATION ONLY		
		LOT NO.	BLOCK NO.	LINE NO.	STATION \ DIRECTION	APPROXIMATE LENGTH 4" PIPE	VERTICAL	HORIZONTAL
40	8" X 4" Tee	27	B	7	7+46/Lt.	9.0'	-3.0'	11.3' Lt.
41	8" X 4" Tee	31	B	7	7+87/Rt.	8.5'	-7.0'	6' Rt.
42	4" Stub	39	B	7	9+80.3/Lt.	6.5'	-3.0'	MH
43	8" X 4" Tee	38	B	7	10+43/Lt.	7.0'	-3.0'	13.5' Lt.
44	8" X 4" Tee	37	B	7	11+78/Lt.	8.0'	-3.0'	13.3' Lt.

NOTE: Vertical Riser Pipe shall be extended to 2' minimum above ground water elevation and 4' maximum below proposed ground elevation.



Baughman ENGINEERING | SURVEYING | PLANNING | LANDSCAPE ARCHITECTURE

EDGE WATER ADD. - PH. I
LINE 7
 SANITARY SEWER IMPROVEMENTS

PROJECT NUMBER: 468-84365
 DESIGN: ATD
 DRAWN: TMS
 APPROVED: DATE 11/07
 SCALE: Noted
 SHEET: **18 OF 39**

EdgeWater\Phase1\SS17 07-05-E836