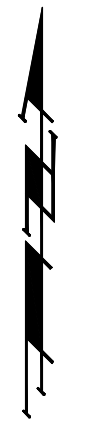
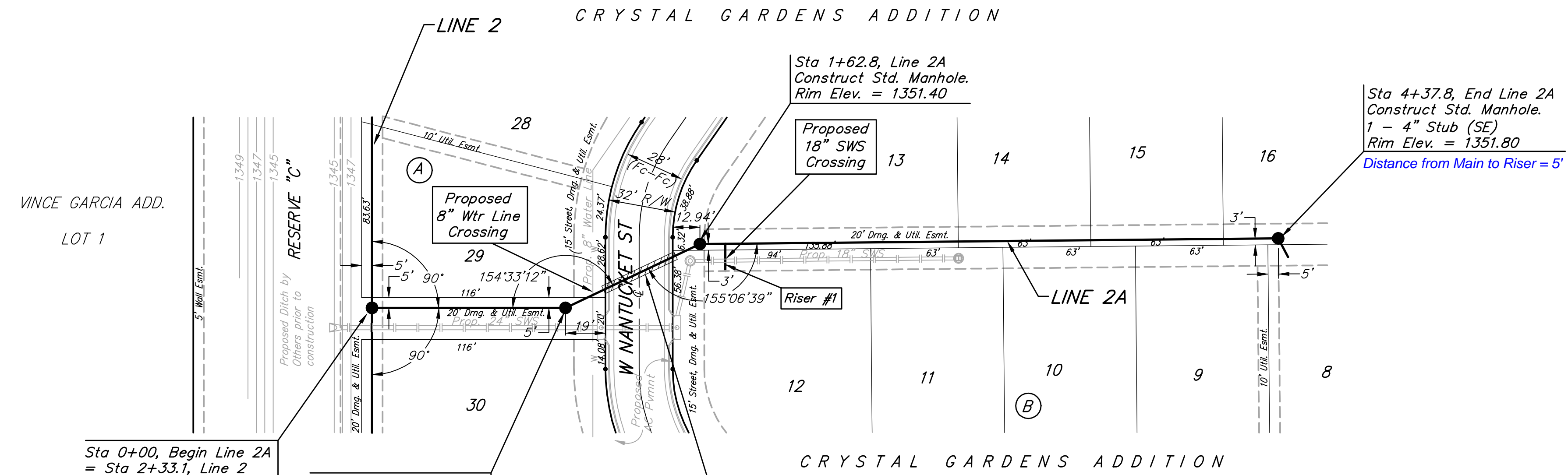


Benchmark:
 "□" Cut On Top of Curb, West Side of Forestview, East of Fire Hydrant, and Along Easterly Extension of the South Line of Lot 2, Block A, Liberty Park 2nd Addition.
 Elev. = 1347.62 NGVD29

City of Wichita Benchmark Southwest Corner of 13th ST N and 135th ST W 30' South and 35' West Intersection. East Side of Concrete Base for Highline Pole.
 Elev. = 1355.65 NGVD29



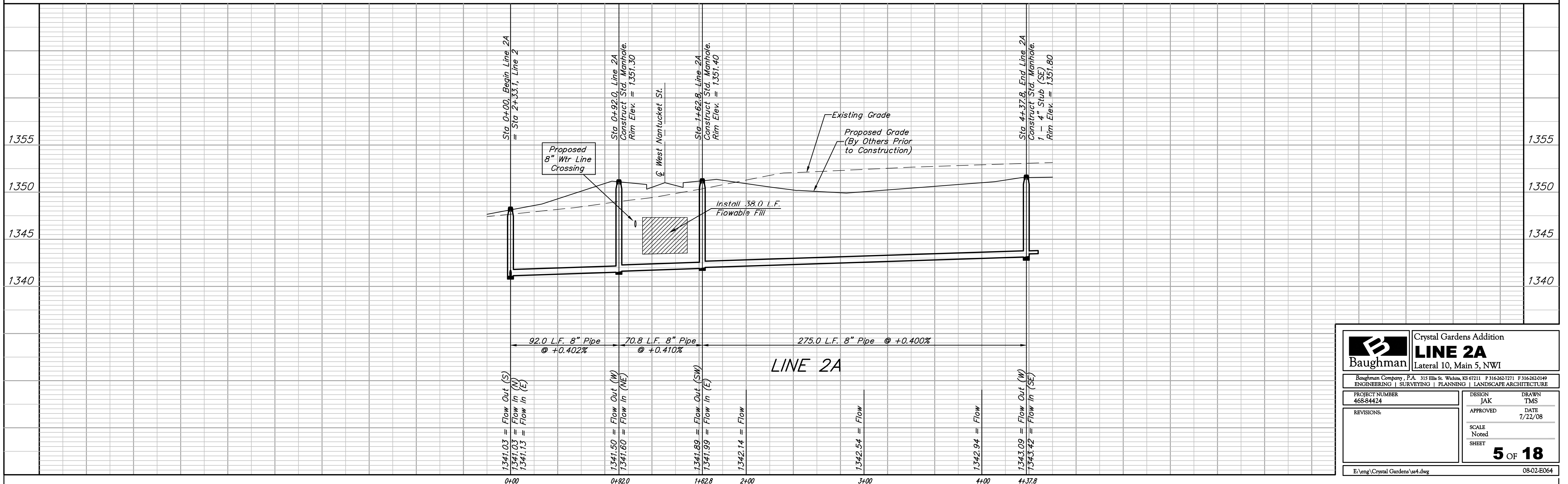
Scale: 1" = 40' Horizontal
 1" = 5' Vertical
 • = Iron



SEWER SERVICE TABLE

NUMBER	TYPE	LOCATION			FOR INFORMATION ONLY		DISTANCE FROM MAIN TO RISER (L/R)		DISTANCE FROM	
		LOT NO.	BLOCK NO.	LINE NO.	STATION \ DIRECTION	APPROXIMATE LENGTH 4" PIPE VERTICAL	HORIZONTAL	UPSTREAM MH	DOWNSTREAM MH	
1	B" X 4" Tee	12	B	2A	1+75/Rt.	5.5'	-13'	13' Rt.	260'	9'

NOTE: Vertical Riser Pipe shall be extended to 2' minimum above ground water elevation and 4' maximum below proposed ground elevation.



	Crystal Gardens Addition	
	LINE 2A	
Lateral 10, Main 5, NW1		
<small>Baughman Company, P.A. 315 Ellis St. Wichita, KS 67211 P 316-262-7271 F 316-262-0149 ENGINEERING SURVEYING PLANNING LANDSCAPE ARCHITECTURE</small>		
PROJECT NUMBER 468-84424	DESIGN JAK	DRAWN TMS
REVISIONS:	APPROVED	DATE 1/22/08
	SCALE Noted	
	SHEET	5 OF 18
E:\eng\Crystal Gardens\ss4.dwg		08-02-ED04