

SANITARY SEWER COLLECTION SYSTEM IMPROVEMENTS

LATERAL 6, MAIN 4 OF THE NW INTERCEPTOR

to serve

WHISTLING WALK ESTATES

Lots 1-8 Inclusive, Block A; Lots 1-8 Inclusive, Block B; Lot 9, Block B except for Floodway;
Lots 1 & 2, Block C except for Floodway; Lot 3, Block C; Lots 4 & 5, Block C except for Floodway

Lots 1 & 2, Block C except for Floodway; Lot 3, Block C; Lots 4 & 5, Block C except for Floodway

Lot 1 except for Floodway; Lots 2-5 Inclusive; Lots 6 & 7 except for Floodway

WHISTLING WALK ESTATES 2ND ADDITION

WHISTLING WALK ESTATES 3RD ADDITION

Lots 1 & 2, Block A except for Floodway and except that part deeded to the City

WHISTLING WALK ESTATES 4TH ADDITION

Lots 1, Block 1 except for Floodway

CITY OF WICHITA, KANSAS

James L. Armour, P.E. City Engineer

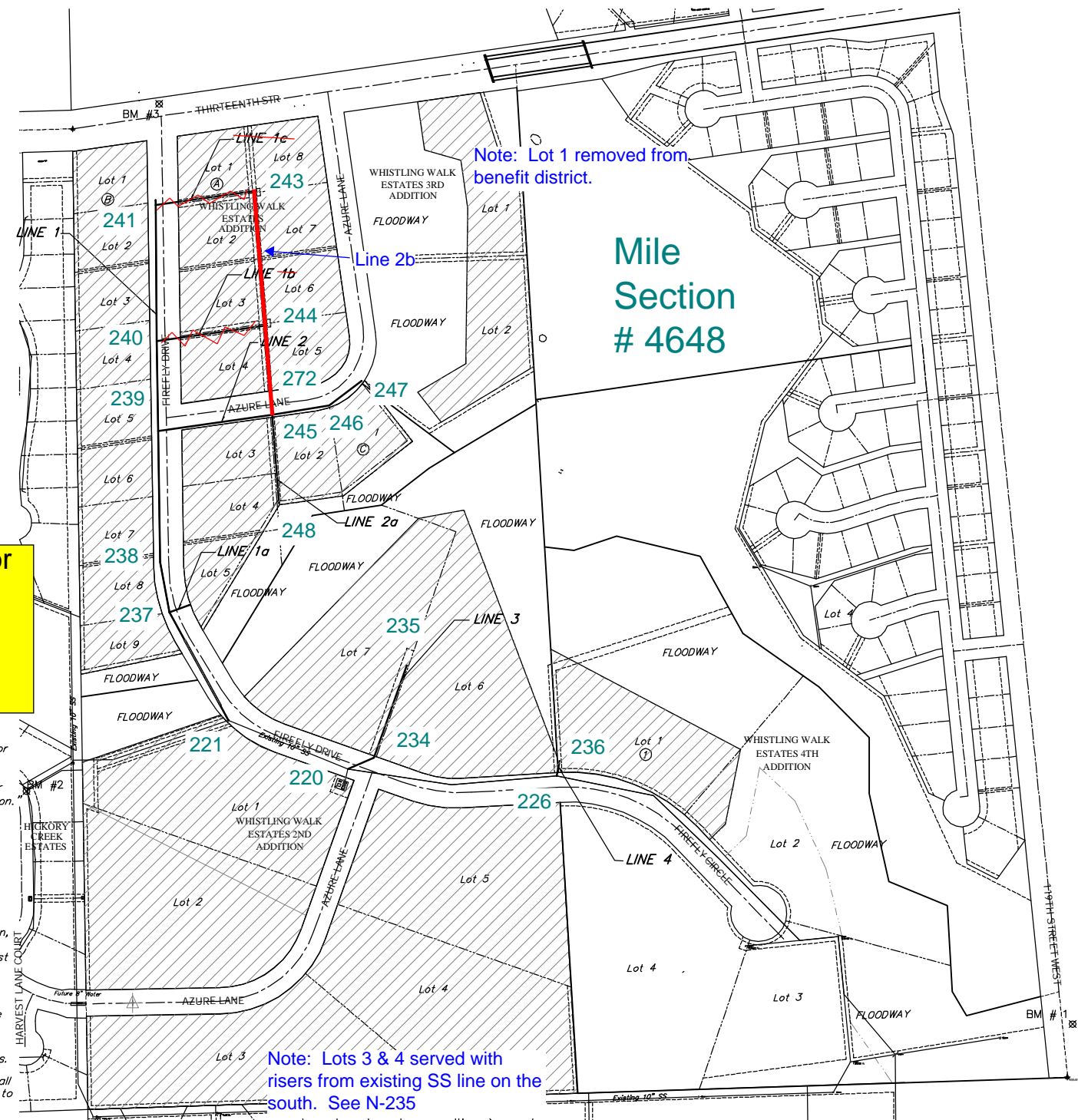
Project Number **468-84005**
O.C.A. Number **744124**
Wildcat Construction Co., Inc. - Contractor
Koleczed, City - Inspector
Released 3/22/06
As-Built, Risers
.pdf by JDL 10/2/07

GENERAL NOTES:

- Contractor will be required to provide notice to utility companies a minimum of twenty-four (24) hours prior to any excavation, as follows:
Kansas One-Call 687-2470
The Contractor must notify the following in case of an emergency:
Cox Communications 262-4270
Kansas Gas Service 1-888-482-4950
Westar Energy 383-8650
Aquila Energy 1-800-303-0357
Southwestern Bell 268-2245
City of Wichita Water Dept. 268-4563
City of Wichita Sewer Maint. 268-4024
City of Wichita Storm Sewer Maint. 268-4090
- The Contractor will be required to contact Kansas One Call at 687-2470 to request the local utility companies to mark any existing lines within the project limits a minimum of forty-eight (48) prior to any excavation or working.
- Existing utilities and their locations, as shown on the plan, represent the best information obtainable for design. Location information has been obtained from utility company records and/or field locations. The Contractor shall be aware that construction will occur in close proximity to existing utilities, shown and not shown, and any conflicts with such utilities shall be reported to the Engineer.
- Prior to bidding the project, each bidder shall visit the site and satisfy himself of surface & subsurface conditions. Each bidder shall also fully inform himself as to the extent of the scope of work to be performed. Each bidder shall also be aware that no additional compensation will be awarded for extra work that should have been evaluated prior to bidding.
- Contractor shall not start work on the project until the project inspector is assigned to the project and is present on the site. Any work done without inspection will be required to be uncovered for inspection.
- The Contractor shall give all property owners and/or tenants of developed property directly abutting the construction of this project a minimum of ten (10) days notice prior to start of construction.
- Properties within the project limits may have underground sprinkler systems in public right-of-way which conflict with new construction. The Contractor will be required to remove and replace to existing working order all sprinkler systems that conflict with the construction. Portions of underground sprinkler systems not in conflict with new construction shall be protected from damage and shall remain in place. The Contractor shall contact the property owner for location and condition prior to removal. All work in connection with underground sprinkler systems shall be considered INCIDENTAL to "Site Clearing and Restoration". Underground sprinkler systems were found during survey.
- Contractor shall be responsible for implementing erosion control methods during construction to prevent unnecessary silt/sediment discharge through downstream properties and/or storm sewer systems. Contractor shall install and maintain erosion controls as directed by the Engineer. These controls may include but not limited to: hay bales; silt fences; temporary mulching or other controls necessary to inhibit sediment runoff during construction.
- Utility service lines, poles, valve boxes, meters, and etcetera are to be adjusted as necessary by others prior to construction unless the plans specifically call for their adjustment by the Contractor or unless the plans specifically identify a utility to be adjusted by its owner during construction. Existing utilities and their location, as shown on the plans, represent the best information obtainable for design. The Contractor will be required to work around existing utilities within the right-of-way which do not conflict with proposed construction.
- Rubble from the removal of miscellaneous structures and excess excavation which is to be wasted shall be disposed of on sites to be provided by the Contractor. These sites shall be approved by the Engineer as to suitability, appearance and site location. Locations, in the opinion of the Engineer, will leave an unsightly appearance will not be approved. All disposal sites must be approved by the Kansas Department of Health and Environment. Material either stockpiled or disposed of in a flood plain would require a Kansas State Board of Agriculture permit. Any material dumped in waters of the United States or wetlands is subject to U.S. Corps. of Engineers permitting regulations. Any material buried or stockpiled beyond approved construction limits would require additional archaeological investigations unless buried in a previously approved borrow location.
- The Contractor shall be responsible for preserving all Shown property irons. The Contractor will be required to reestablish any property irons which are damaged or destroyed by his construction operations. Such irons shall be reestablished by a licensed land surveyor in accordance with state laws. All Costs for this shall be INCIDENTAL to "Site Clearing & Restoration."
- Sodding/Seeding**
a. **Lawn/Turf Areas** - All lawn/turf areas disturbed by the construction shall be restored with the same grass/sod as existing. Restoration of disturbed areas shall include, but not limited to, top soil preparation and sodding. All sodding work shall be in accordance with City Standard specifications and the City Administrative Regulations No. AR78, which governs cleanup and restoration or replacement following construction. All costs for this work shall be INCIDENTAL to "Site Clearing & Restoration".
b. **Non - Lawn/Turf Areas** - The contractor shall reseed all non-lawn/turf areas disturbed by construction with a mixture of Ryegrass (applied at a rate of 200lbs. per acre) and Buffalo grass (applied at a rate of 100 lbs. per acre). Pure Nitrogen fertilizer shall also be applied at a rate of 1.5 lbs. per thousand square feet. The seed shall be watered with deep soaking every two (2) weeks during dry periods until a mature stand of grass is obtained. The permanent seeding may be omitted only if sodding is required in accordance with previous General Note. The Contractor shall be responsible for installing Erosion Control Blanket (Curlex), or approved equivalent, over all seeded areas. All costs for this work shall be INCIDENTAL to "Site Clearing & Restoration".
- All channel slopes disturbed by construction shall be restored to their original slopes and grades. The Contractor shall be responsible for installing Erosion Control Blanket (Curlex) and restoration of the disturbed slopes as necessary in accordance with General Note 12. All costs for this work shall be INCIDENTAL to "Site Clearing & Restoration".
- Trees and shrubs in the public right-of-way which are in direct conflict with the proposed construction shall be removed by the Contractor with the Engineer's approval. Trees and shrubs which are not in direct conflict with the proposed construction shall be saved and protected from damage. Tree Removal shall be INCIDENTAL to "Site Clearing and Restoration".
- Gravel roads and driveways that are to be removed during construction shall be backfilled with sand, jetted with water, and compacted to an elevation 2' below the proposed pavement. Cost to be INCIDENTAL to the Pipe Installation.
- The Contractor shall install Self Sealing Manhole Covers on proposed manholes that are to be constructed in existing ditches. See Plan Sheets for locations. The cost shall be INCIDENTAL to the bid item "Standard Type "P" Manhole".
- The Contractor shall comply with all applicable safety regulations and City of Wichita Specifications and Standards.
- New Trenches crossing or beneath the existing roadways shall be backfilled with sand, jetted with water, and compacted to an elevation 2' below the proposed pavement. Cost to be INCIDENTAL to the Pipe Installation.
- TRAFFIC CONTROL**
The Contractor shall contain the operations to permit traffic through and across construction at existing roadways at all times. The Contractor shall erect warning signs, flashing lights, and barricades in compliance with the Manual on Uniform Traffic Control Devices to ensure safety as directed in the general conditions. The length of trenches that will be allowed to remain open overnight and weekends shall be left to the discretion of the Engineer.

Sheet Index

Title Sheet	1
Line 1	2
Line 1 & 1a	3
Line 1b & 1c	4
Line 2 & 2a	5
Line 3 & 4	6
Details	7-8



Benefit District

Benchmarks

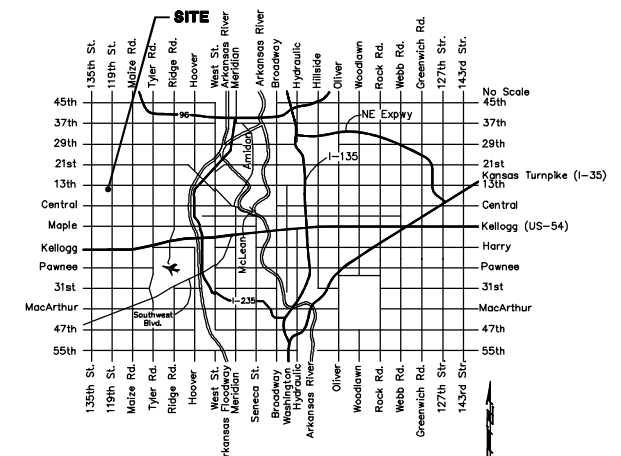
- BM #1 - City of Wichita Disc @ 119th Street West & Cowskin Creek Bridge, Located on the SE Corner at Top of Hubguard Elev. = 1339.22 (MSL Datum)
- BM #2 - "D" Cut on South Edge of Concrete Entrance to Lift Station, 0.5'± East of East Edge of Manhole Adjacent to Northwest Corner of Lot 1, Block 5 in the Hickory Creek Addition. Elev. = 1332.00 (MSL Datum)
- BM #3 - City of Wichita Disc @ 13th Street North & Firefly Drive, 38.5' N of C of 13th Street North @ the C of Firefly Drive Elev. = 1332.92 (MSL Datum)

Scale: 1" = 200'

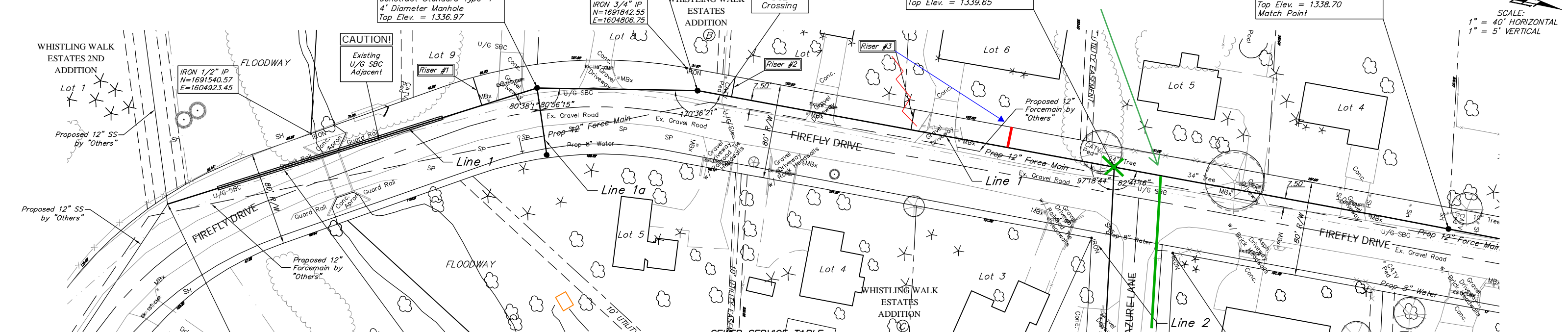
Drawing File: F:\Eng\Firefly&Azure\Land\dwg\SSBase.dwg(Cover) MAY, 2005

Baughman ENGINEERING | SURVEYING | PLANNING | LANDSCAPE ARCHITECTURE
Baughman Company, P.A.
315 Ellis St. Wichita, KS 67211 P 316-262-7271 F 316-262-0149

Vicinity Map



BENCHMARK:
 BM #2-"D" Cut on South Edge of Concrete Entrance
 to Lift Station, 0.5'± East of East Edge of
 Manhole Adjacent to Northwest Corner of
 Lot 1, Block 5 in the Hickory Creek Addition.
 Elev. = 1343.00 (MSL Datum)



SCALE:
 1" = 40' HORIZONTAL
 1" = 5' VERTICAL

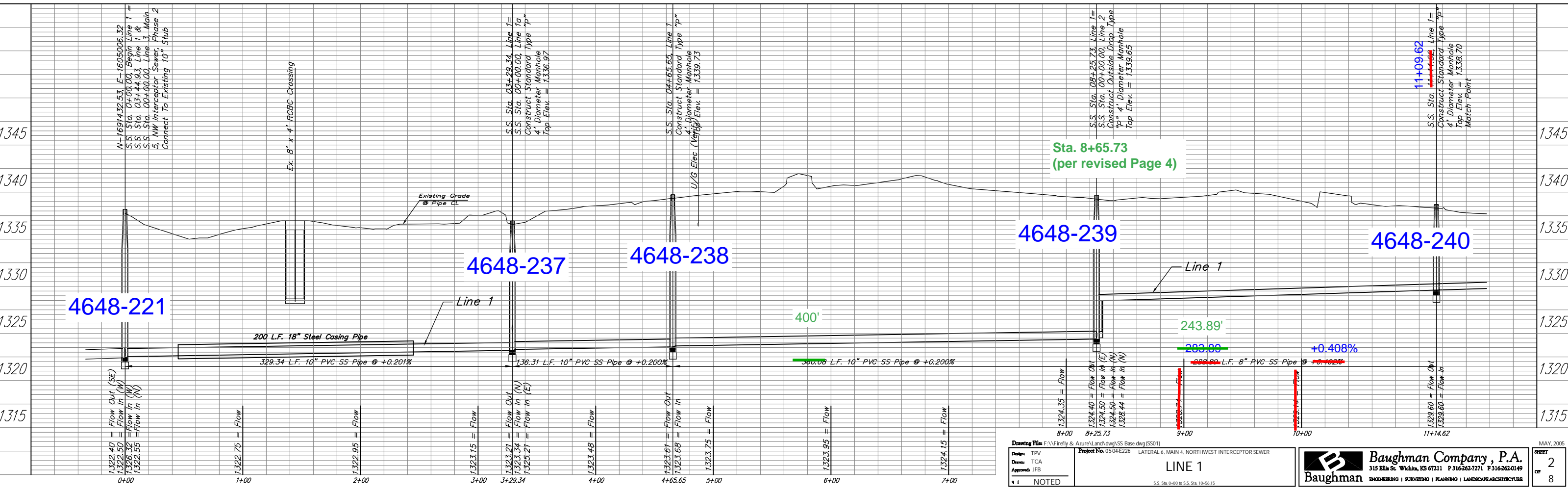
N-1691432.53, E-1605006.32
 S.S. Sta. 0+00.00, Begin Line 1 =
 S.S. Sta. 03+44.93, Line 1 &
 S.S. Sta. 00+00.00, Line 3, Main 5,
 NW Interceptor Sewer, Phase 2
 Connect To Existing 10" Stub

Install 200 L.F. 18" Steel Casing
 by Bore and Jacking Methods from
 Sta. 0+45.00 to Sta. 2+45.00

NUMBER	TYPE	LOCATION				FOR INFORMATION ONLY	
		LOT NO.	BLOCK	LINE NO.	STATION \ DIRECTION	APPROXIMATE LENGTH 4" PIPE	VERTICAL
1	10" X 4" Tee	9	B	1	2+80/Lt.	9.5'	24'
2	10" X 4" Tee	7	B	1	4+90/Lt. 99	12.0'	17.5'
3	10" X 4" Tee	6	B	1	7+40/Lt. 7+40	13.0'	17.5'

NOTE: Vertical Riser Pipe shall be extended to 2' minimum above ground water elevation and 4' maximum below proposed ground elevation.

Revised by TPV
 7/5/05-Removed Lines 1b & 1c
 8/3/05-Raised Sta. 8+25.73 to End
 8/12/05-Added 3 Risers & Table



Drawing File: F:\Firefly & Azure\Land\dwg\SS Base.dwg (SS01)
 Design: TPV
 Drawn: TCA
 Approved: JFB

Project No. 05-04-E226 LATERAL 6, MAIN 4, NORTHWEST INTERCEPTOR SEWER

LINE 1
 S.S. Sta. 6+00 to S.S. Sta. 10+56.15

Baughman
 315 Ellis St. Wichita, KS 67211 P 316-262-7171 F 316-262-0149
 ENGINEERING | SURVEYING | PLANNING | LANDSCAPE ARCHITECTURE

MAY 2005
 SHEET 2 OF 8

BENCHMARK:
 BM #3 - City of Wichita Disc @ 13th Street North & Firefly Drive, 38.5' N of C of 13th Street North @ the C of Firefly Drive Elev. = 1332.92 (MSL Datum)

N-1692445.93, E-1604814.64
 S.S. Sta. ~~11+09.15~~ Line 1 =
~~0+00.00~~ Match Point

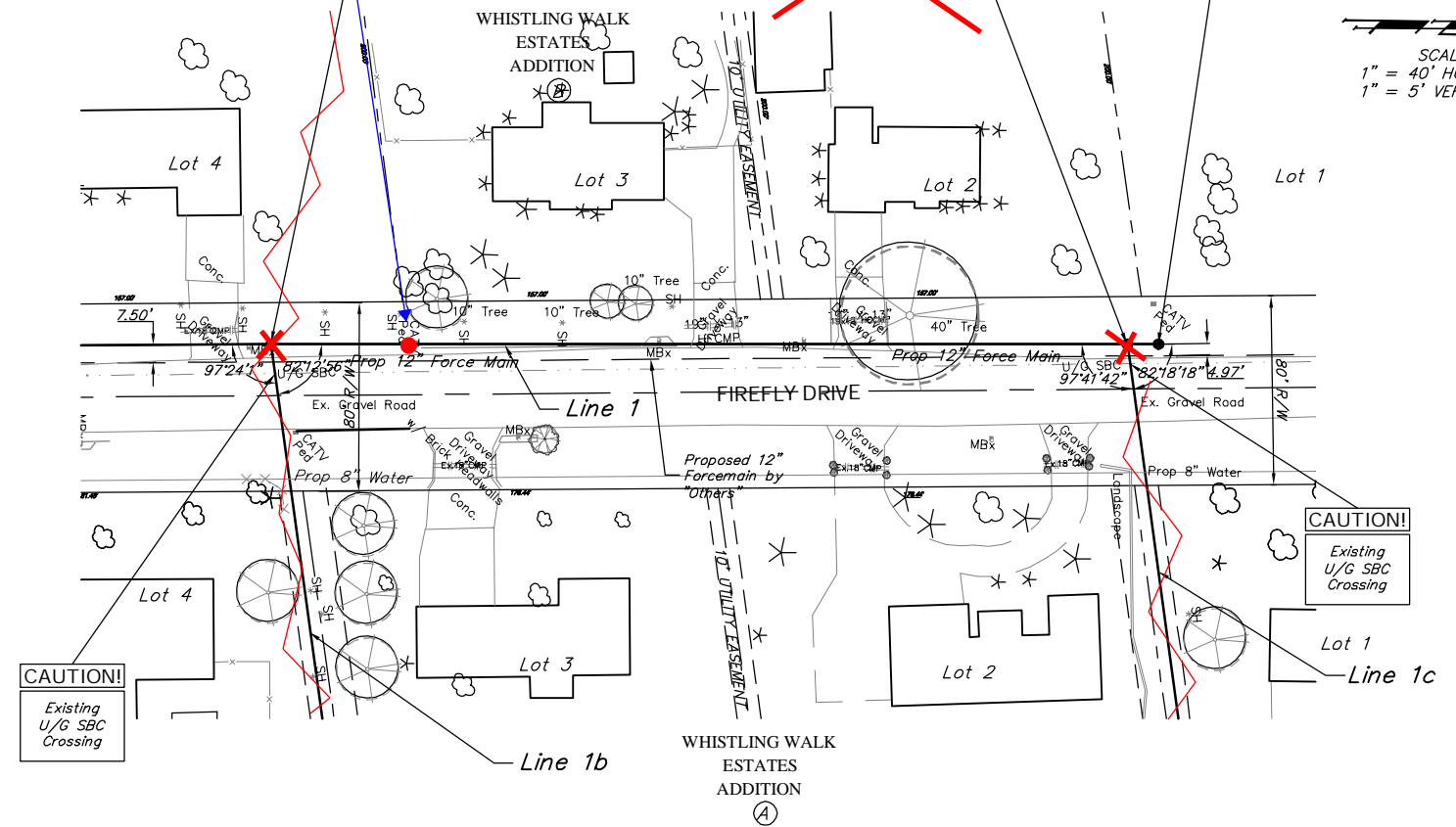
11+09.62

~~N-1692810.06, E-1604814.44
 S.S. Sta. 14+20.30, Line 1 =
 S.S. Sta. 00+00.00, Line 1c
 Construct Standard Type "P"
 4' Diameter Manhole
 Top Elev. = 1336.00~~

14+41.57

N-1692823.34, E-1604811.32
 S.S. Sta. ~~14+33.30~~ End Line 1
 Construct Standard Type "P"
 4' Diameter Manhole
 Top Elev. = 1335.88

SCALE:
 1" = 40' HORIZONTAL
 1" = 5' VERTICAL



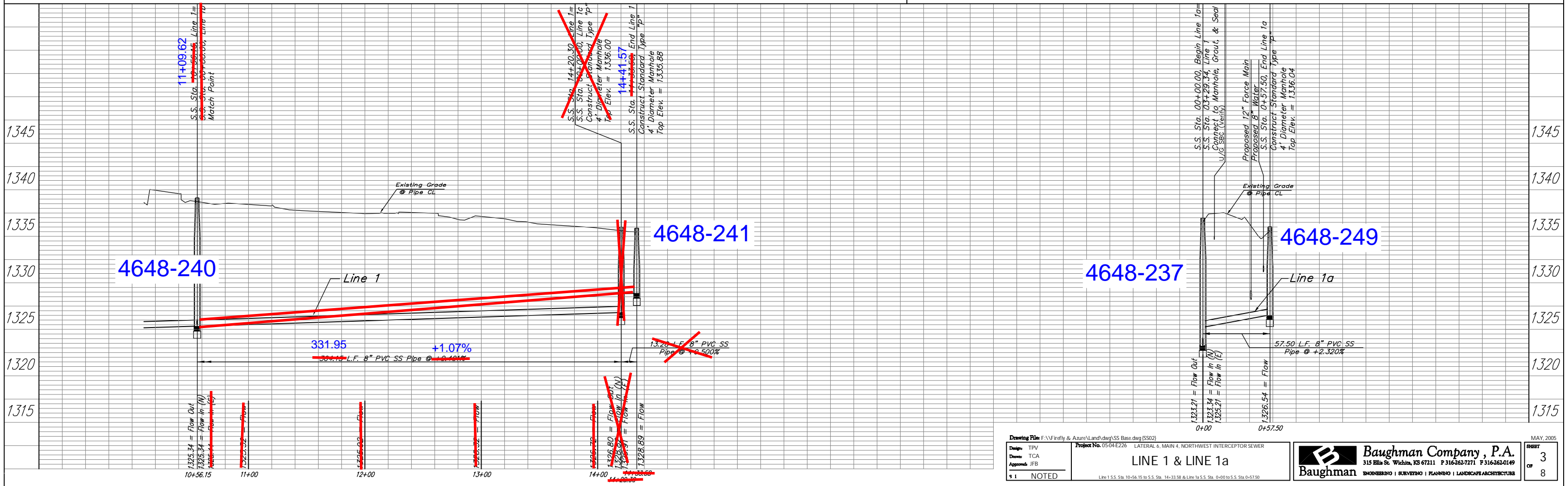
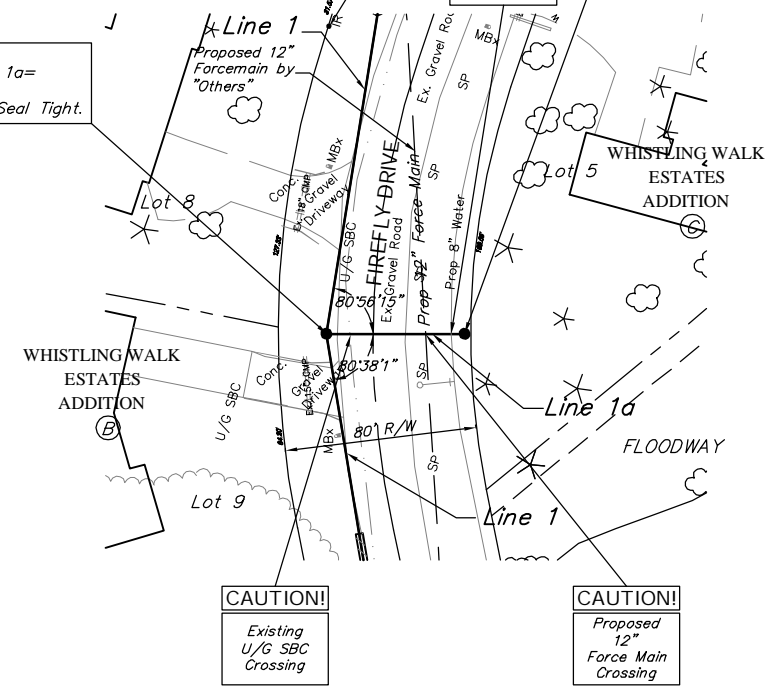
BENCHMARK:
 BM #2 - "D" Cut on South Edge of Concrete Entrance to Lift Station, 0.5'± East of East Edge of Manhole Adjacent to Northwest Corner of Lot 1, Block 5 in the Hickory Creek Addition. Elev. = 1343.00 (MSL Datum)

IRON 3/4" IP
 N=1691842.55
 E=1604806.75

N-1691740.42, E-1604902.37
 S.S. Sta. 0+57.50, End Line 1a
 Construct Standard Type "P"
 4' Diameter Manhole
 Top Elev. = 1336.04

SCALE:
 1" = 40' HORIZONTAL
 1" = 5' VERTICAL

N-1691721.38, E-1604848.11
 S.S. Sta. 00+00.00, Begin Line 1a=
 S.S. Sta. 03+29.34, Line 1
 Connect to Manhole, Grout, & Seal Tight.



Drawing File: F:\Firefly & Aure\Land\dwg\SS Base.dwg (SS02)
 Design: TPV
 Drawn: TCA
 Approved: JFB
 Project No. 05-04-E226 LATERAL 6, MAIN 4, NORTHWEST INTERCEPTOR SEWER
 LINE 1 & LINE 1a
 Line 1 S.S. Sta. 10+56.15 to S.S. Sta. 14+33.58 & Line 1a S.S. Sta. 0+00 to S.S. Sta. 0+57.50

Baughman Company, P.A.
 315 Ellis St. Wichita, KS 67211 P 316-362-7271 F 316-362-0149
 ENGINEERING | SURVEYING | PLANNING | LANDSCAPE ARCHITECTURE

MAY 2005
 SHEET 3 OF 8

BENCHMARK:
 BM #3 - City of Wichita Disc @ 13th Street North & Firefly Drive, 38.5' N of \angle of 13th Street North @ the \angle of Firefly Drive
 Elev. = 1332.92 (MSL Datum)

N-1692255.53, E-1604817.59
 S.S. Sta. 00+00.00, Line 2 =
 S.S. Sta. 08+65.73, Line 1
 Connect to Manhole, Grout,
 and Seal Tight.
 Top Elev. = 1339.80

CAUTION!
 Existing
 U/G SBC
 & Proposed
 Foremain
 Crossings

N-1692297.82, E-1605111.04
 S.S. Sta. 02+96.49, Line 2 =
 S.S. Sta. 00+39.75, Line 2b
 Construct Standard Type "P"
 4' Diameter Manhole
 Top Elev. = 1335.22

N-1692284.30, E-1605271.85
 S.S. Sta. 04+96.07, Line 2
 Construct Standard Type "P"
 4' Diameter Manhole
 Top Elev. = 1334.22

N-1692340.13, E-1605362.25
 S.S. Sta. 06+02.32, End Line 2
 Construct Shallow Type "P"
 4' Diameter Manhole
 Top Elev. = 1334.00

IRON, PIN
 N=1692330.02
 E=1605232.28
 Lot 5

IRON 3/4" IP
 N=1692278.99
 E=1604879.81

IRON PIN
 N=1692208.40
 E=1604880.99

N-1692258.19, E-1605114.17
 S.S. Sta. 03+36.24, Line 2 =
 S.S. Sta. 00+00.00, Line 2a
 Construct Standard Type "P"
 4' Diameter Manhole
 Top Elev. = 1335.22

4648-239

4648-272

4648-245

4648-246

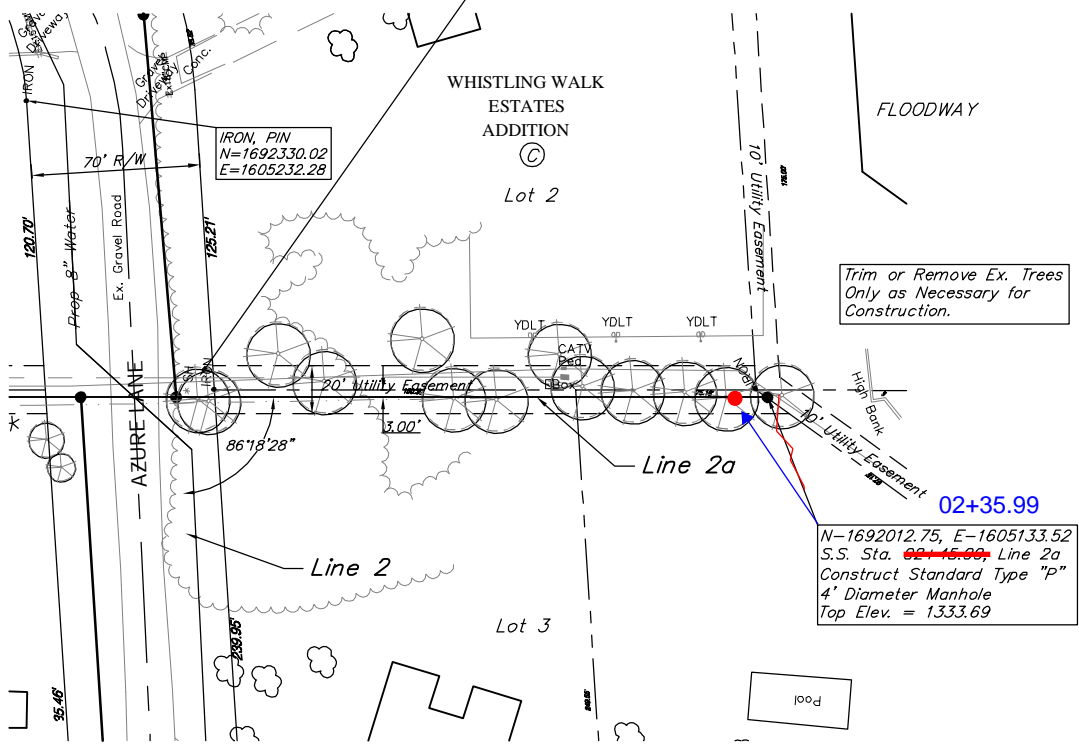
4648-247

Revised by TPV
 10/12/05

BENCHMARK:
 BM #3 - City of Wichita Disc @ 13th Street North & Firefly Drive, 38.5' N of \angle of 13th Street North @ the \angle of Firefly Drive
 Elev. = 1332.92 (MSL Datum)

N-1692258.19, E-1605114.17
 S.S. Sta. 00+00.00, Begin Line 2a =
 S.S. Sta. 03+36.24, Line 2 =
 S.S. Sta. 00+00.00, Line 2b
 Connect to Manhole, Grout, & Seal Tight.

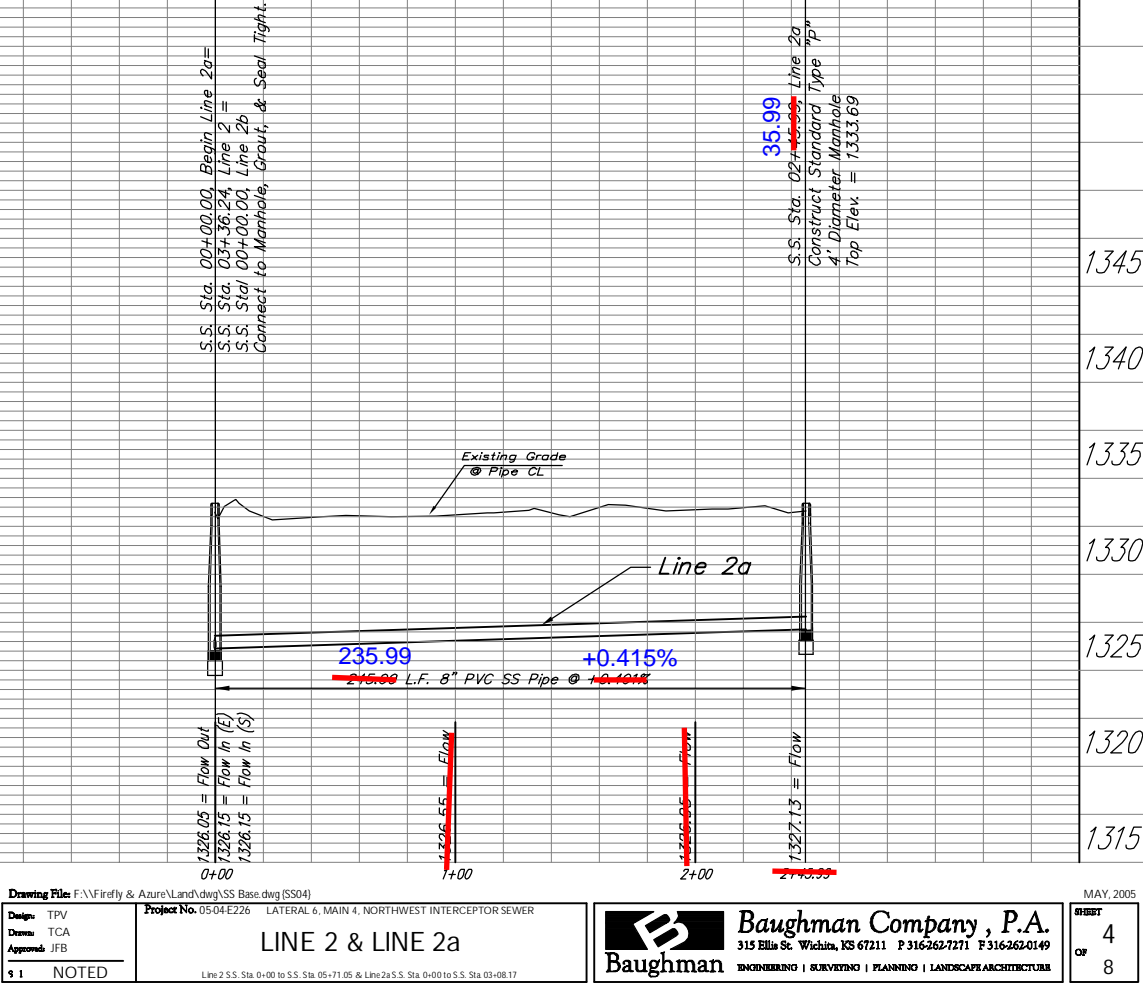
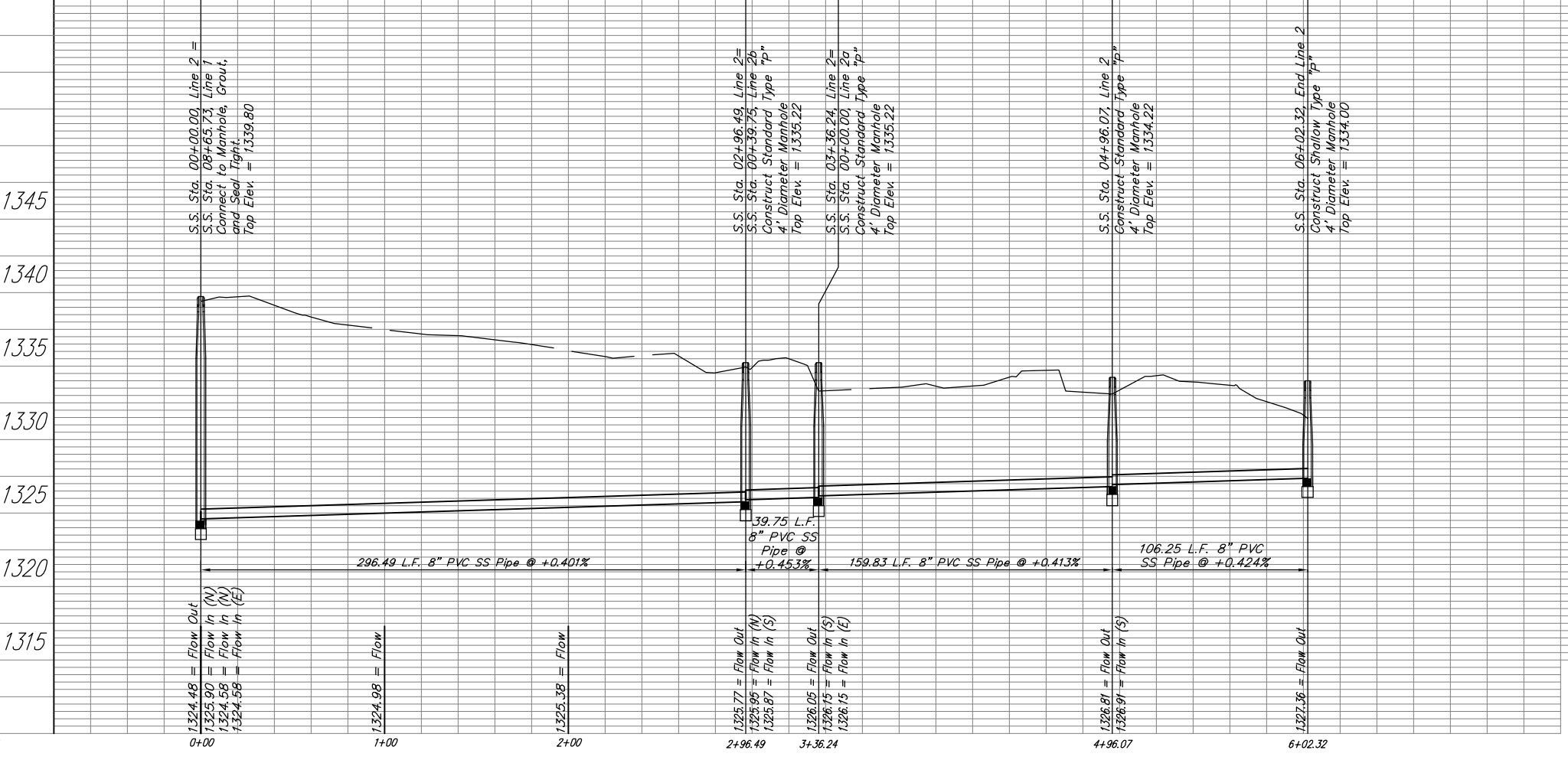
SCALE:
 1" = 40' HORIZONTAL
 1" = 5' VERTICAL



4648-245

4648-248

Revised by TPV
 10/12/05



Drawing File: F:\Firefly & Azure\Land\dwg\SS Base.dwg (SS04)
 Design: TPV
 Drawn: TCA
 Approved: JFB

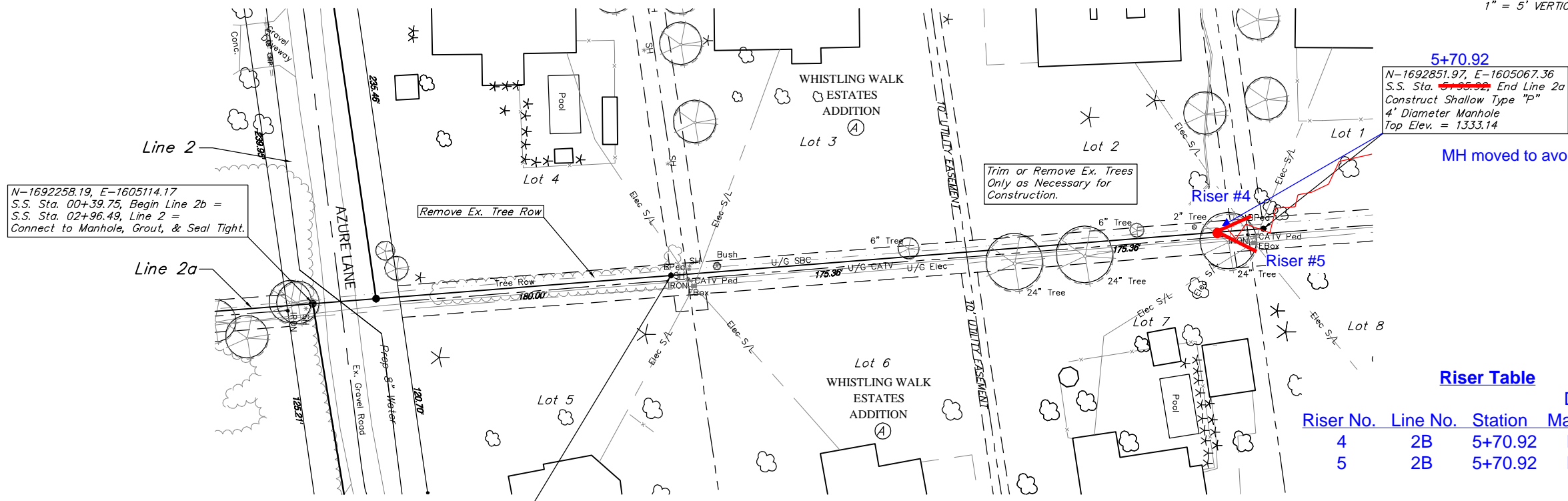
LINE 2 & LINE 2a

Baughman Company, P.A.
 315 Ella St. Wichita, KS 67211 P 316-262-7271 F 316-262-0149
 ENGINEERING | SURVEYING | PLANNING | LANDSCAPE ARCHITECTURE

MAY 2005
 SHEET 4 OF 8

BENCHMARK:
 BM #3 - City of Wichita Disc @ 13th Street North
 & Firefly Drive, 38.5' N of C of 13th
 Street North @ the C of Firefly Drive
 Elev. = 1332.92 (MSL Datum)

SCALE:
 1" = 40' HORIZONTAL
 1" = 5' VERTICAL



N-1692258.19, E-1605114.17
 S.S. Sta. 00+39.75, Begin Line 2b =
 S.S. Sta. 02+96.49, Line 2 =
 Connect to Manhole, Grout, & Seal Tight.

5+70.92
 N-1692851.97, E-1605067.36
 S.S. Sta. ~~5+96.92~~ End Line 2a
 Construct Shallow Type "P"
 4' Diameter Manhole
 Top Elev. = 1333.14

N-1692481.96, E-1605096.52
 S.S. Sta. 2+24.77, Line 2a
 Construct Standard Type "P"
 4' Diameter Manhole
 Top Elev. = 1333.77

Riser Table

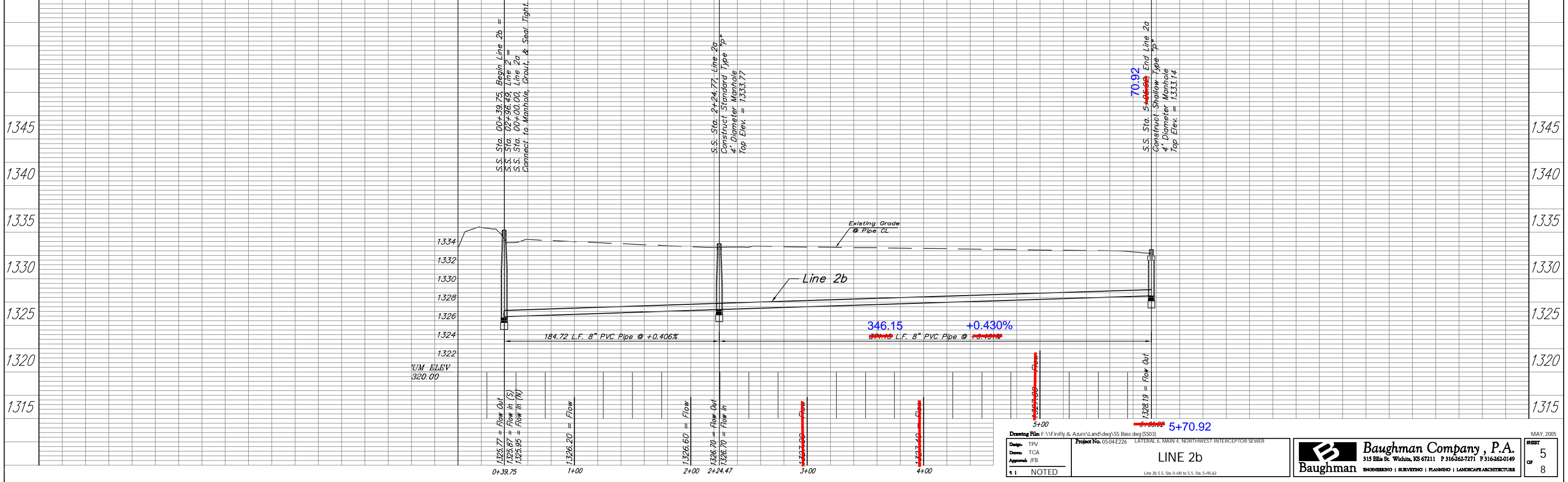
Riser No.	Line No.	Station	Distance From Main to Riser (Lt. /Rt.)
4	2B	5+70.92	NW 19' from MH
5	2B	5+70.92	NE 23' from MH

4648-272

4648-244

4648-243

Revised by TPV
 10/12/05



Design: TPV
 Drawn: TCA
 Approved: JFB
 Project No. 05-04-E226
 LATERAL 6, MAIN 4, NORTHWEST INTERCEPTOR SEWER
 LINE 2b
 Line 2b S.S. Sta. 0+00 to S.S. Sta. 5+95.62

Baughman Company, P.A.
 315 Ellis St. Wichita, KS 67211 P 316-262-7271 F 316-262-0149
 ENGINEERING | SURVEYING | PLANNING | LANDSCAPE ARCHITECTURE

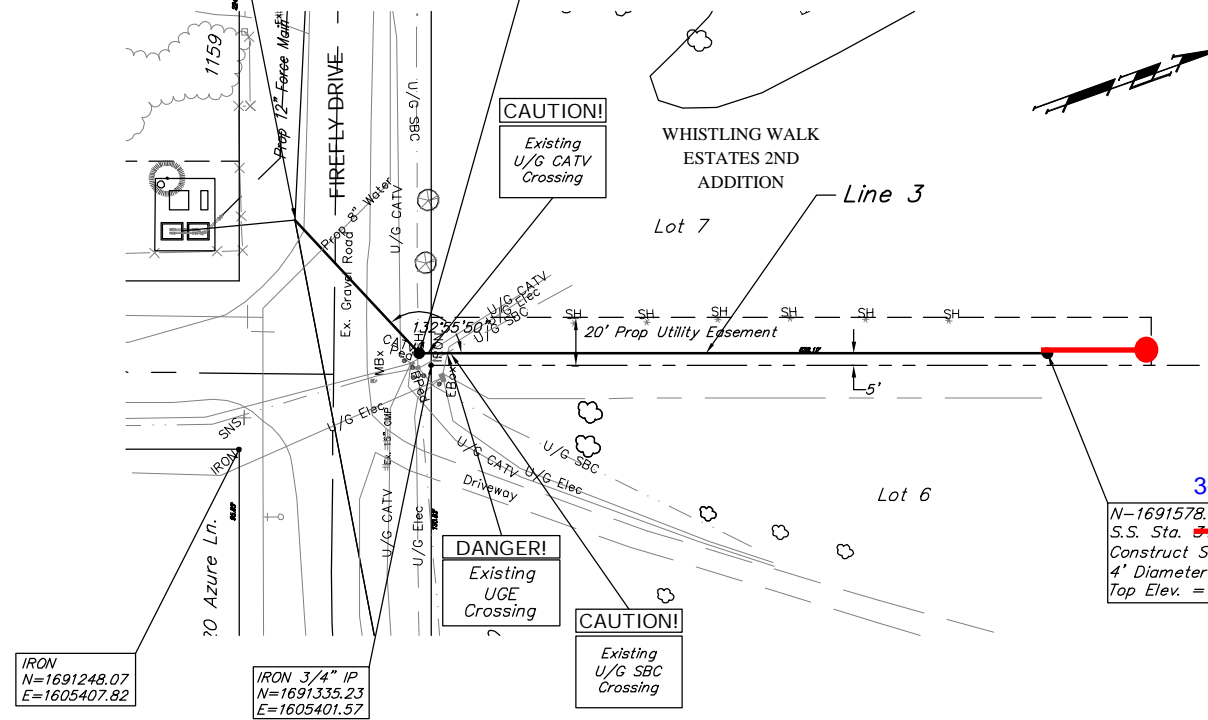
MAY 2005
 SHEET 5 OF 8

BENCHMARK:
 BM #3 - City of Wichita Disc @ 13th Street North & Firefly Drive, 38.5' N of Q of 13th Street North @ the Q of Firefly Drive
 Elev. = 1332.92 (MSL Datum)

N-1691302.02, E-1605325.62
 S.S. Sta. 00+00.00, Begin Line 3=
 S.S. Sta. 00+47.53, Line 1 &
 S.S. Sta. 00+00.00, Line 2 Main 5,
 NW Interceptor Sewer, Phase 2
 Connect to Manhole, Grout, & Seal Tight.

N-1691332.16, E-1605395.15
 S.S. Sta. ~~00+73.78~~, Line 3
 Construct Standard Type "P"
 4' Diameter Manhole
 Top Elev. = 1337.05

N-1691578.83, E-1605482.51
 S.S. Sta. ~~3+63.78~~, Line 3
 Construct Standard Type "P"
 4' Diameter Manhole
 Top Elev. = 1333.00



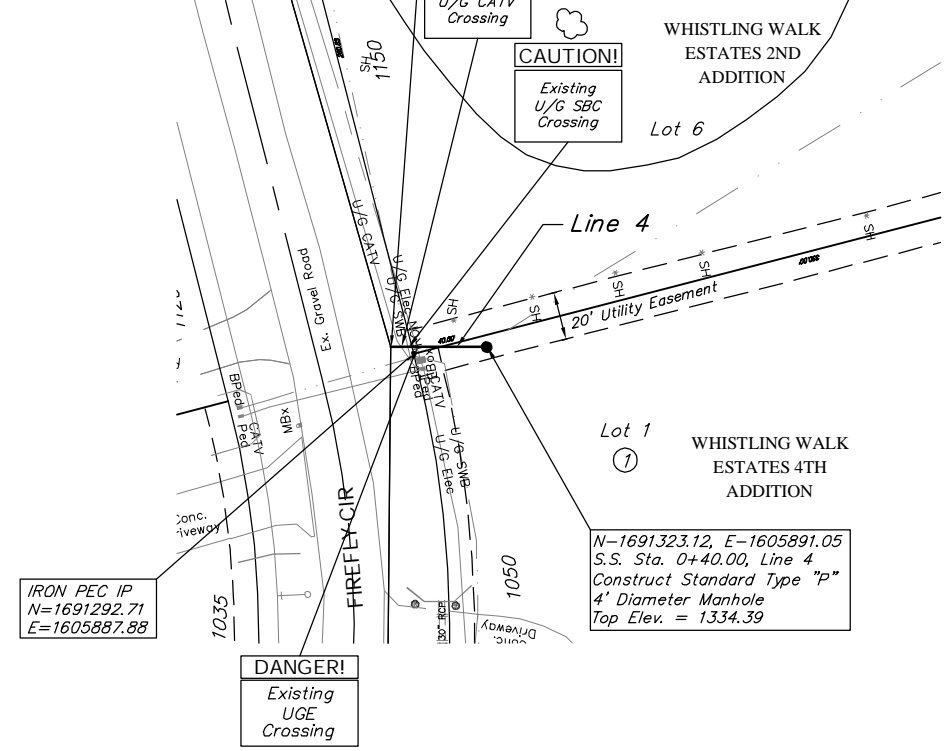
4648-220

4648-234

4648-235

BENCHMARK:
 BM #3 - City of Wichita Disc @ 13th Street North & Firefly Drive, 38.5' N of Q of 13th Street North @ the Q of Firefly Drive
 Elev. = 1332.92 (MSL Datum)

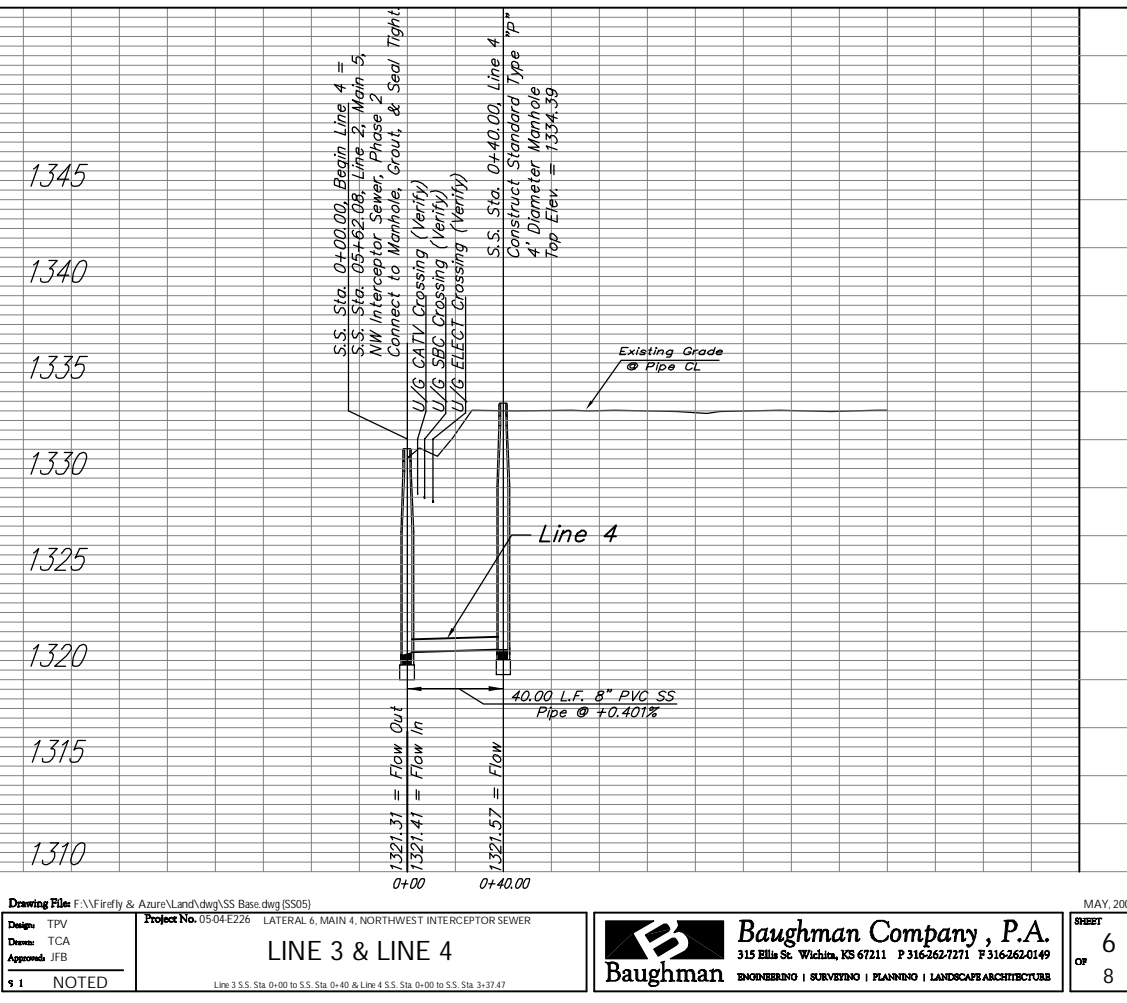
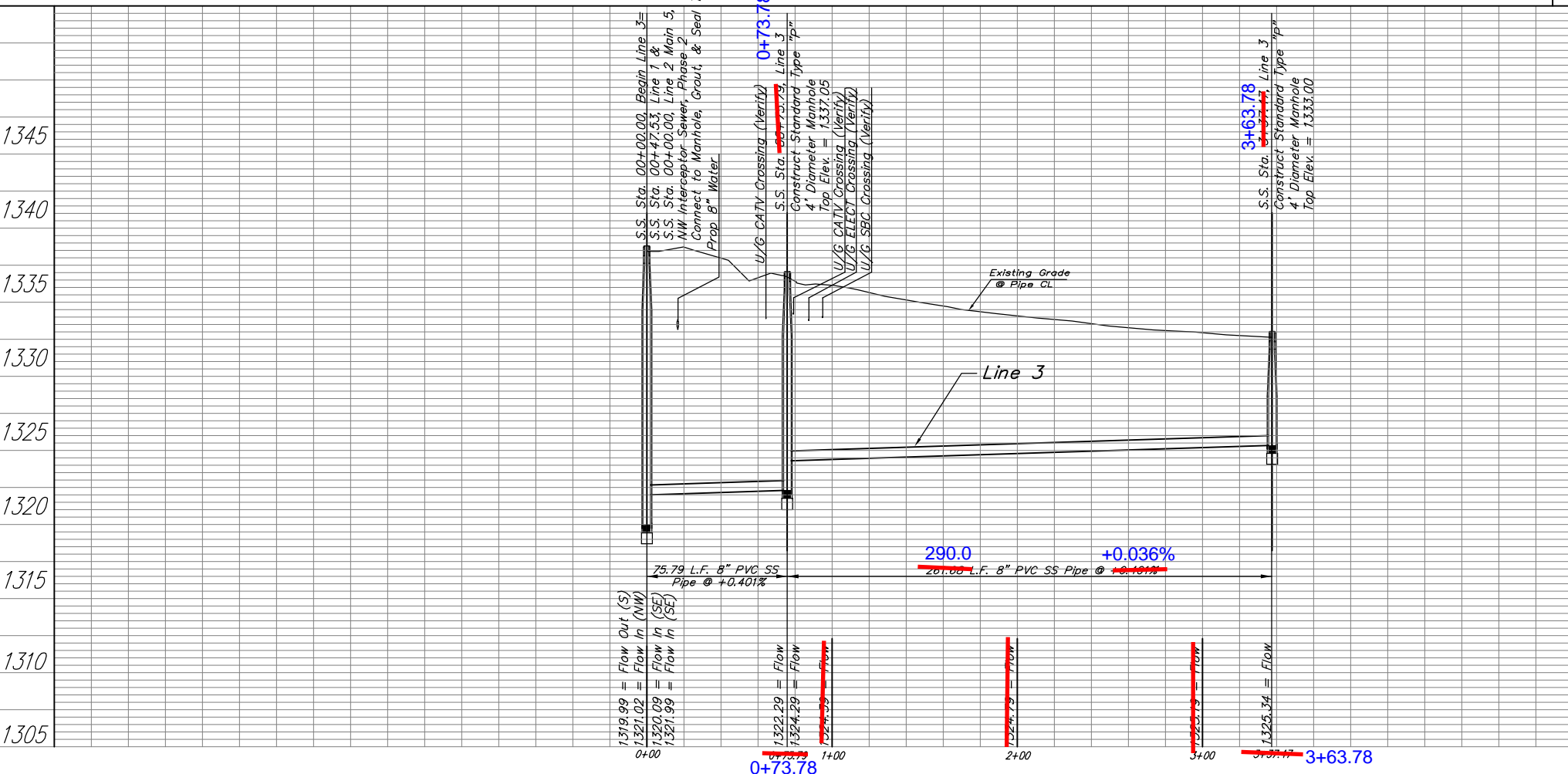
N-1691283.86, E-1605883.41
 S.S. Sta. 0+00.00, Begin Line 4 =
 S.S. Sta. 05+62.08, Line 2, Main 5,
 NW Interceptor Sewer, Phase 2
 Connect to Manhole, Grout, & Seal Tight.



4648-226

4648-236

SCALE:
 1" = 40' HORIZONTAL
 1" = 5' VERTICAL



Drawing File: F:\Firefly & Azure\Land\dwg\SS Base.dwg (SS05)
 Design: TPV
 Date: TCA
 Appointed: JFB
 Project No. 05-04-E226 LATERAL 6, MAIN 4, NORTHWEST INTERCEPTOR SEWER
 LINE 3 & LINE 4
 Line 3 S.S. Sta 0+00 to S.S. Sta 0+40 & Line 4 S.S. Sta 0+00 to S.S. Sta 3+37.47

Baughman Company, P.A.
 315 Ellis St. Wichita, KS 67211 P 316-262-7271 F 316-262-0149
 ENGINEERING | SURVEYING | PLANNING | LANDSCAPE ARCHITECTURE

MAY 2005
 SHEET 6 OF 8