

PAVING & INCIDENTAL DRAINAGE

# WEBB ROAD TURN LANES

CITY OF WICHITA  
SEDGWICK COUNTY, KANSAS

PROJECT NO. 472-83700

AND

PROJECT NO. 448-89885

NEIL D. CABLE, P.E. - CITY ENGINEER

OCA #765799

## GENERAL NOTES

- UNLESS SHOWN OR STATED OTHERWISE ON THESE DRAWINGS, MATERIALS AND CONSTRUCTION SHALL BE IN ACCORDANCE WITH CITY OF WICHITA CONCRETE PAVEMENT AND ASPHALTIC CONCRETE PAVEMENT SPECIFICATIONS.
- CONTRACTOR WILL BE REQUIRED TO PROVIDE A MINIMUM ADVANCE NOTICE OF FORTY-EIGHT (48) HOURS TO UTILITY COMPANIES PRIOR TO STARTING ANY EXCAVATION AS FOLLOWS:  
KANSAS ONE-CALL 1-800-344-7233  
OR 687-2470 (LOCAL WICHITA)

THE CONTRACTOR MUST NOTIFY THE FOLLOWING IN CASE OF AN EMERGENCY:

SBC (TELEPHONE)	800-870-8390
COX COMMUNICATIONS (CABLE)	262-0661
WESTAR (ELECTRIC)	261-6521
KANSAS GAS SERVICE (GAS)	832-3101
CITY OF WICHITA WATER & SEWER MAINT.	262-6000
AQUILA (GAS)	946-0096

- THE CONTRACTOR SHALL BE RESPONSIBLE FOR PRESERVING PROPERTY IRONS. THE CONTRACTOR WILL BE REQUIRED TO RE-ESTABLISH ANY PROPERTY IRONS WHICH ARE DAMAGED OR DESTROYED BY HIS CONSTRUCTION OPERATIONS. SUCH IRONS SHALL BE RE-ESTABLISHED BY A LICENSED LAND SURVEYOR IN ACCORDANCE WITH STATE LAWS.
- EXISTING UTILITIES AND THEIR LOCATIONS, AS SHOWN ON THE PLANS REPRESENT THE BEST INFORMATION OBTAINABLE FOR DESIGN. LOCATION INFORMATION HAS BEEN OBTAINED FROM THE VARIOUS UTILITY COMPANIES AND IS EITHER FROM COMPANY RECORD DRAWINGS OR COMPANY PROVIDED FIELD LOCATIONS. THE PLAN LOCATIONS SHOWN ARE NOT GUARANTEED. ADDITIONAL EXISTING UTILITIES MAY ALSO BE ENCOUNTERED.
- RUBBLE FROM THE REMOVAL OF MISCELLANEOUS STRUCTURES AND EXCESS EXCAVATION WHICH IS TO BE WASTED SHALL BE DISPOSED OF ON SITES TO BE PROVIDED BY THE CONTRACTOR. THESE SITES SHALL BE APPROVED BY THE ENGINEER AS TO SUITABILITY, APPEARANCE AND SITE LOCATION. LOCATIONS THAT, IN THE OPINION OF THE ENGINEER, WILL LEAVE AN UNSIGHTLY APPEARANCE WILL NOT BE APPROVED. ALL DISPOSAL SITES MUST BE APPROVED BY THE KANSAS DEPARTMENT OF HEALTH AND ENVIRONMENT. MATERIAL EITHER STOCKPILED OR DISPOSED OF IN A FLOOD PLAIN WOULD REQUIRE A KANSAS STATE BOARD OF AGRICULTURE PERMIT. ANY MATERIAL DUMPED IN WATERS OF THE UNITED STATES OR WETLANDS IS SUBJECT TO U.S. CORPS OF ENGINEERS PERMITTING REGULATIONS. ANY MATERIAL BURIED OR STOCKPILED BEYOND APPROVED CONSTRUCTION LIMITS WOULD REQUIRE ADDITIONAL ARCHAEOLOGICAL INVESTIGATIONS UNLESS BURIED IN A PREVIOUSLY APPROVED BORROW LOCATION.
- A SAW CUT OF AT LEAST ONE-HALF THE DEPTH OF THE EXISTING SURFACE COURSES OR ONE-FOURTH THE DEPTH OF THE EXISTING TOTAL PAVEMENT THICKNESS SHALL BE PROVIDED AT LOCATIONS WHERE PROPOSED CONSTRUCTION ADJUTS AN EXISTING SURFACE OR PAVEMENT FOR WHICH PARTIAL REMOVAL OF THAT SURFACE OR PAVEMENT IS REQUIRED. SAW JOINT TO FACILITATE REMOVAL WITHIN THREE (3) FEET OF EXISTING JOINTS WILL NOT BE PERMITTED AND FOR SUCH INSTANCES THE LIMITS OF REMOVAL SHALL EXTEND TO THE EXISTING JOINT. SUCH SAW CUTS WILL NOT BE PAID FOR DIRECTLY AND THIS COST SHALL BE CONSIDERED AS SUBSIDIARY TO THE REMOVAL OF SURFACE OR PAVEMENT.
- CONTRACTOR SHALL SOD FROM PROPOSED BACK OF CURB TO EAST LINE OF 10' SIDEWALK/UTILITY EASEMENT WITH GARD'N WISE FESCUE/BLUE BLEND (OBTAINED FROM CRANMER GRASS FARMING, INC., 6121 N 119TH ST., MAIZE, KS. 67101, PHONE 316-722-7230) OR APPROVED EQUAL. ALL OTHER DISTURBED AREAS SHALL BE SEEDED WITH AN ANNUAL RYE GRASS AT A RATE OF 250 LBS/ACRE. CONTRACTOR SHALL COORDINATE INSTALLATION OF SOD WITH OWNER/DEVELOPER'S IRRIGATION CONTRACTOR PRIOR TO SOD PLACEMENT.

## BENCHMARKS

- BM #1 "□" S.E. COR. HDWL 44' NORTH AND 42' EAST OF WEST 1/4 CORNER SEC. 9, T27S, R2E, FROM 97167 ELEV. = 1380.13 (192.73 C.O.W.)
- BM #2 "□" EAST END OF ISLAND AT ENTRANCE TO FOLIAGE ON WEST SIDE OF WEBB ROAD ELEV. = 1376.25 (188.85 C.O.W.)
- BM #3 "□" TOP OF CURB WEST SIDE OF WEBB, 5' SOUTH SIDE OF ENTRANCE TO 1401 NORTH WEBB ELEV. = 1375.365 (187.965 C.O.W.)
- BM #4 "□" WEST SIDE CENTER OF CURB INLET TOP, 2ND INLET NORTH OF 13TH STREET, ON WEST SIDE OF WEBB ROAD ELEV. = 1373.475 (186.075 C.O.W.)
- BM #5 "□" SW CORNER SIGNAL LIGHT POLE BASE NORTHEAST CORNER WEBB AND 13TH. STREET ELEV. = 1373.475 (186.075 C.O.W.)
- BM #6 "□" SW CORNER RCB ON NORTH END OF WINGWALL ON RCB UNDER 13TH. STREET WEST OF SOUTH 1/4, SEC. 9, T27S, R2E ELEV. = 1377.32 (189.92 C.O.W.)

NW COR., SW 1/4 SEC. 9,  
T27S, R2E, 6TH. P.M.

BM #1

BM #2

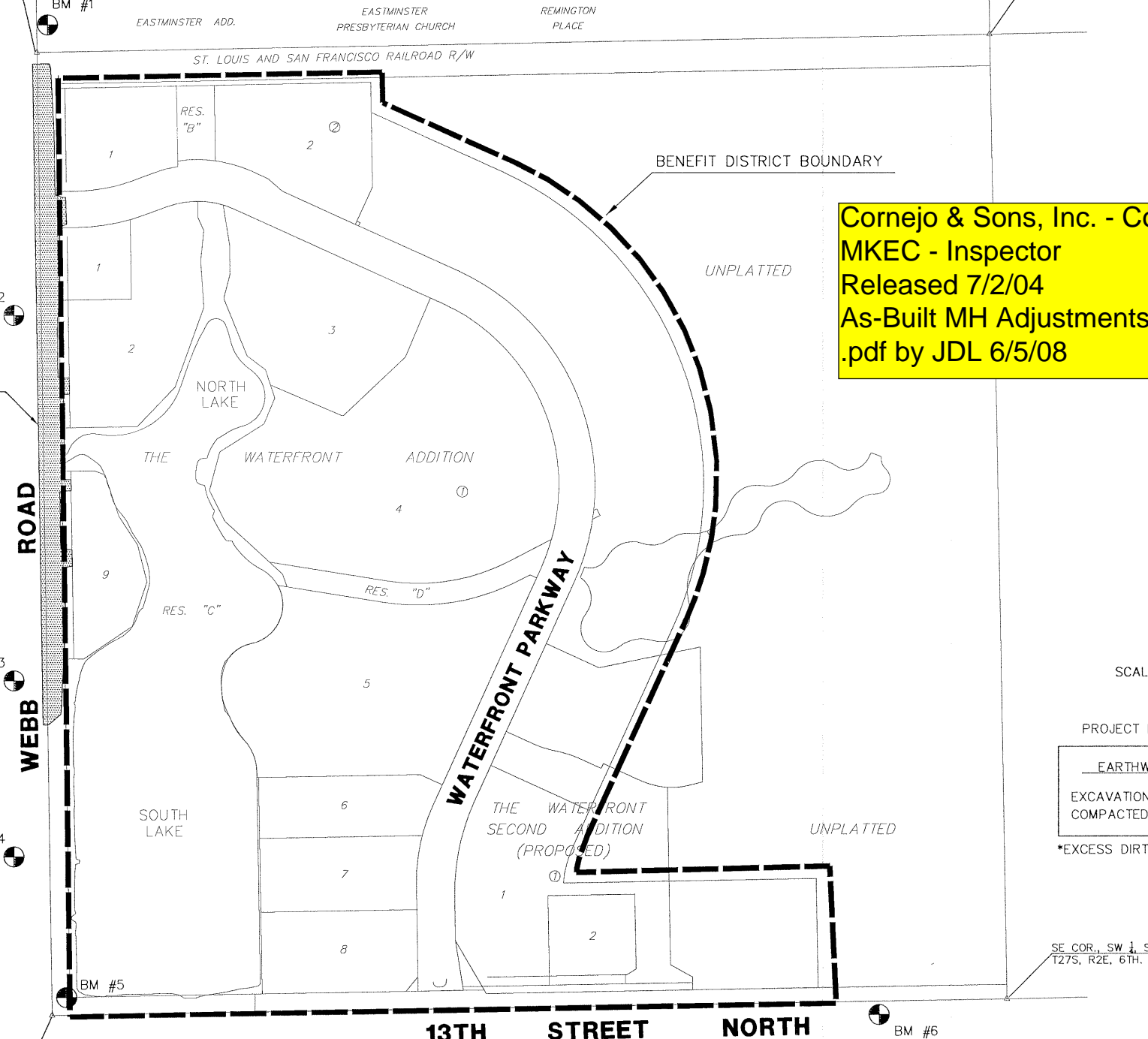
TURN LANES

BM #3

BM #4

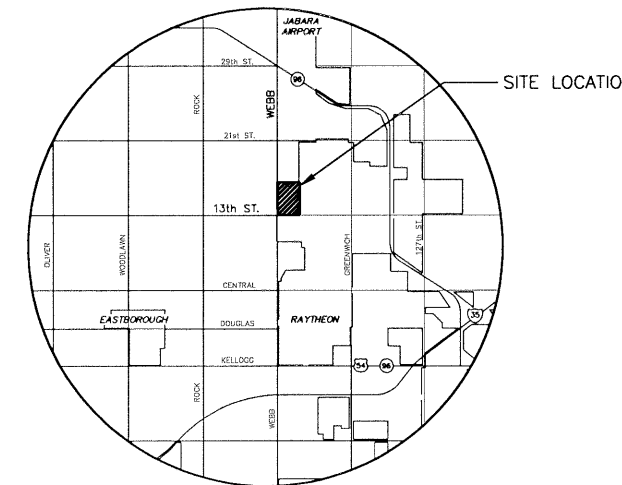
SW COR., SW 1/4 SEC. 9,  
T27S, R2E, 6TH. P.M.

SW COR., SW 1/4 SEC. 9,  
T27S, R2E, 6TH. P.M.



NE COR., SW 1/4 SEC. 9,  
T27S, R2E, 6TH. P.M.

SE COR., SW 1/4 SEC. 9,  
T27S, R2E, 6TH. P.M.

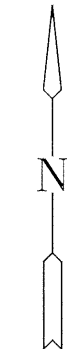


LOCATION MAP

## INDEX TO DRAWINGS

SHEET NO.	DESCRIPTION
1	TITLE SHEET
2	TYPICAL SECTIONS
3-5	PAVING DETAILS
6-9	PAVING PLANS
10	STORM WATER SEWER
11	INLET DETAILS
12	WATER ASSY. DETAILS
13	RCB PROFILE
14-15	RCB DETAILS
16-17	HEADWALL & HANDRAIL ALT.#1
17A	HEADWALL & HANDRAIL ALT.#2
18	PAVEMENT MARKING PLAN
19	TRAFFIC CONTROL PLAN
20-23	TRAFFIC CONTROL DETAILS
24-27	BMP DETAILS
28-33	CROSS SECTIONS
34	PLAT

**Cornejo & Sons, Inc. - Contractor**  
**MKEC - Inspector**  
**Released 7/2/04**  
**As-Built MH Adjustments**  
**.pdf by JDL 6/5/08**



SCALE: 1" = 200'

PROJECT LENGTH = 1780 L.F.

EARTHWORK SUMMARY	
EXCAVATION*	2300 C.Y.
COMPACTED FILL	420 C.Y.

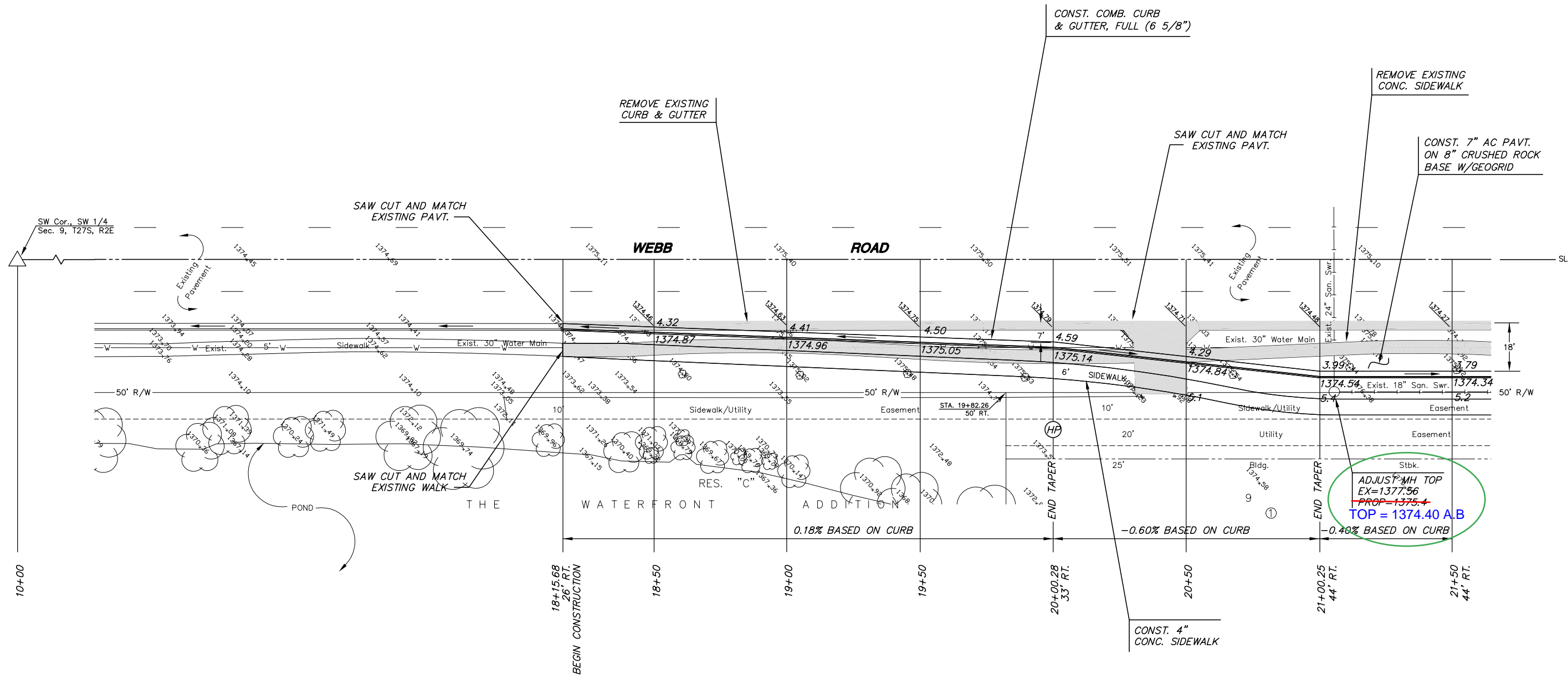
\*EXCESS DIRT TO BE HAULED OFF SITE.



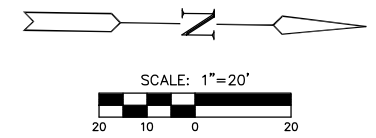
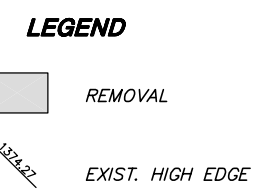
*Gregory J. Allison*  
10/1/03



<b>WEBB ROAD TURN LANES</b>		
PROJECT NAME		
<b>PAVING PLANS</b>		
SHEET TITLE		
DFL	KKL	GJA
DESIGN BY.	DRAWN BY.	CHECKED BY.
SEPTEMBER 2003	02014_ET	1 / 34
DATE	JOB NO.	SHEET/OF



NOTE:  
SIDEWALK ALIGNMENT SUBJECT TO  
CHANGE. FINAL ALIGNMENT TO BE  
APPROVED BY MKEC.



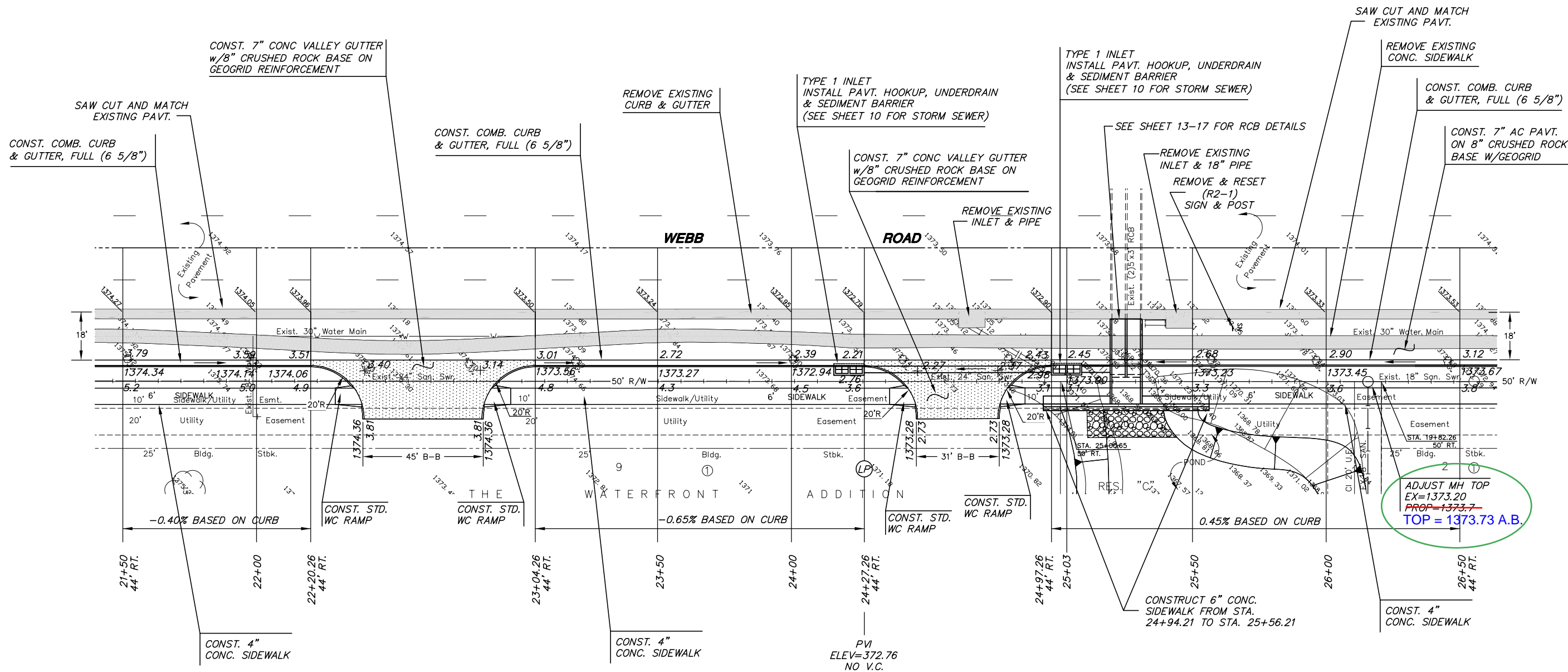
**MKEC**  
ENGINEERING  
CONSULTANTS  
411 N. WEBB ROAD  
WICHITA, KS. 67206  
316-684-9600

**WEBB ROAD TURN LANES**  
PROJECT NAME

**STA 18+15.68 TO STA 21+50**  
SHEET TITLE

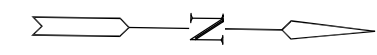
DESIGN BY: DFL	DRAWN BY: KKL	CHECKED BY: GJA
DATE: SEPTEMBER 2003	JOB NO.: 02014_E1	SHEET/OF: 6 / 34

H:\CIVIL\02014\DWG\PAV\13THPAV\02014\_E1



ADJUST MH TOP  
 EX=1373.20  
 PROP=1373.7  
 TOP = 1373.73 A.B.

NOTE:  
 SIDEWALK ALIGNMENT SUBJECT TO  
 CHANGE. FINAL ALIGNMENT TO BE  
 APPROVED BY MKEC.



**LEGEND**

	REMOVAL
	EXIST. HIGH EDGE

**MKEC**  
 ENGINEERING  
 CONSULTANTS  
 411 N. WEBB ROAD  
 WICHITA, KS. 67206  
 316-684-9600

**WEBB ROAD TURN LANES**  
 PROJECT NAME

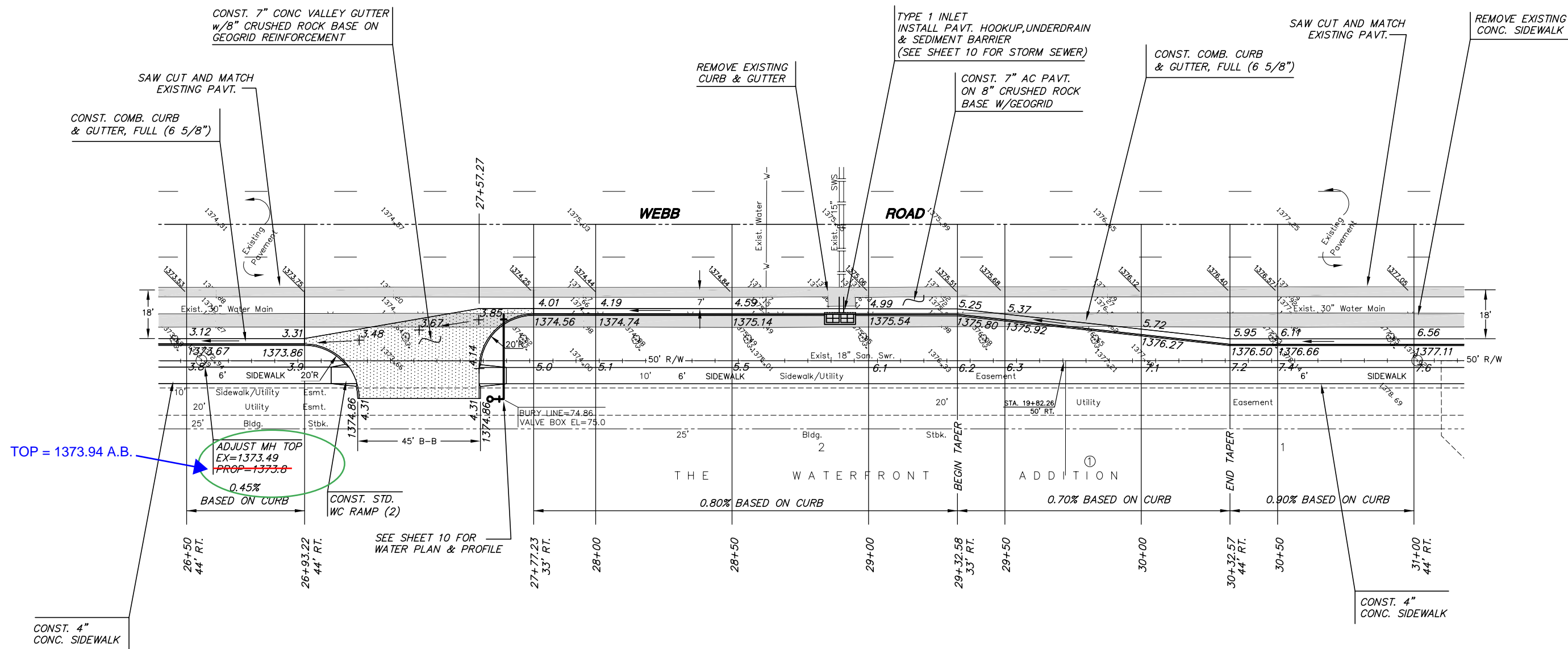
---

**STA 21+50 TO STA 26+50**  
 SHEET TITLE

---

DESIGN BY: <b>DFL</b>	DRAWN BY: <b>KKL</b>	CHECKED BY: <b>GJA</b>
DATE: <b>SEPTEMBER 2003</b>	JOB NO.: <b>02014_E2</b>	SHEET/OF: <b>7 / 34</b>

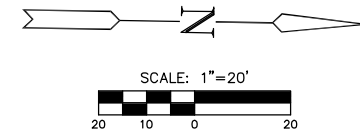
H:\CVIL\02014\DWG\PAV\13THPAV\02014\_E2



TOP = 1373.94 A.B.

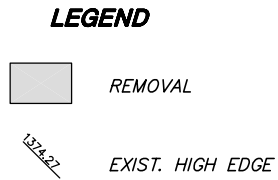
ADJUST MH TOP  
EX=1373.49  
~~PROP=1373.0~~  
0.45%  
BASED ON CURB


SEE SHEET 10 FOR  
WATER PLAN & PROFILE



NOTE:  
CONTRACTOR TO PROTECT TREES  
DURING CONSTRUCTION

NOTE:  
SIDEWALK ALIGNMENT SUBJECT TO  
CHANGE. FINAL ALIGNMENT TO BE  
APPROVED BY MKEC.





**MKEC**  
ENGINEERING  
CONSULTANTS  
411 N. WEBB ROAD  
WICHITA, KS. 67206  
316-684-9600

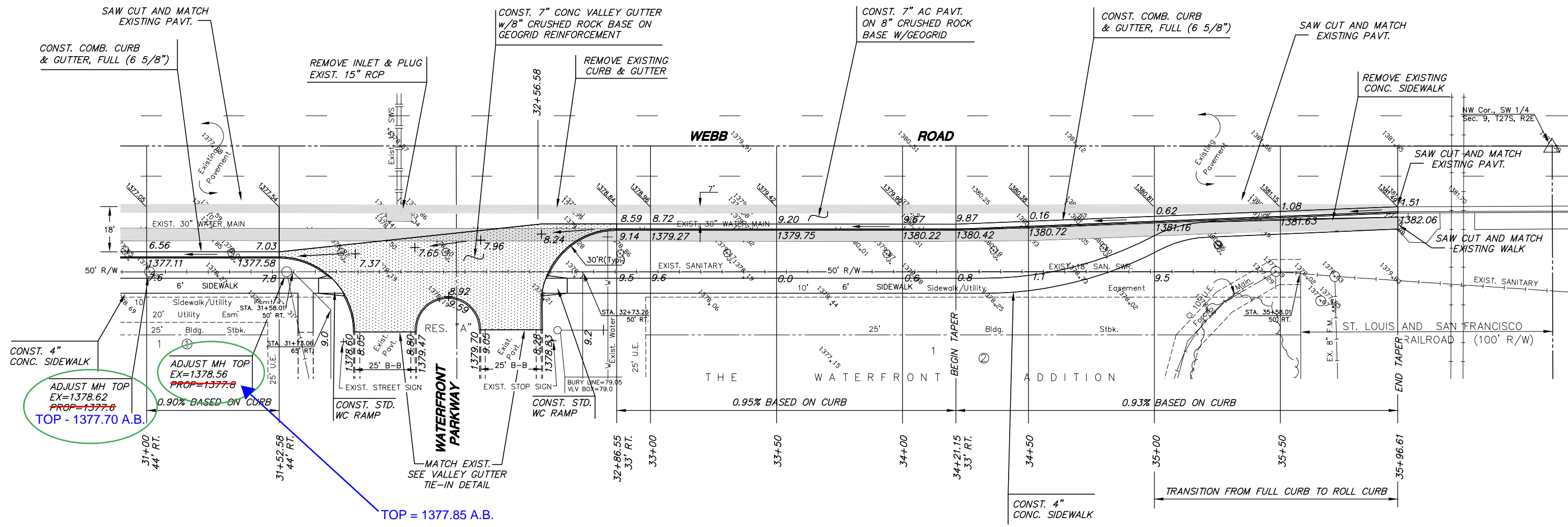
**WEBB ROAD TURN LANES**  
PROJECT NAME

---

**STA 26+50 TO STA 31+00**  
SHEET TITLE

---

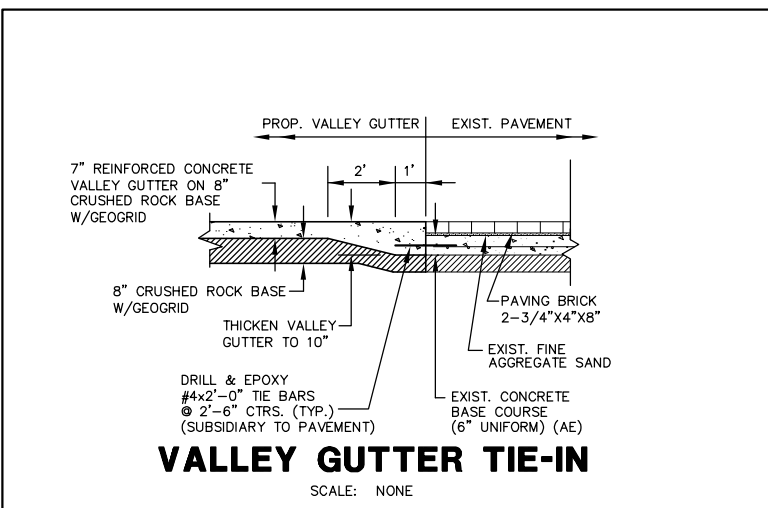
DFL DESIGN BY.	KKL DRAWN BY.	GJA CHECKED BY.
SEPTEMBER 2003 DATE	02014_E3 JOB NO.	8 / 34 SHEET/OF



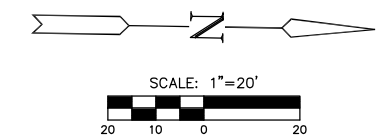
ADJUST MH TOP  
EX=1378.62  
PROP=1377.6  
TOP - 1377.70 A.B.

ADJUST MH TOP  
EX=1378.56  
PROP=1377.8

TOP = 1377.85 A.B.



NOTE:  
SIDEWALK ALIGNMENT SUBJECT TO  
CHANGE. FINAL ALIGNMENT TO BE  
APPROVED BY MKEC.



**LEGEND**

REMOVAL

EXIST. HIGH EDGE

NOTE:  
CONTRACTOR TO PROTECT TREES  
DURING CONSTRUCTION

<p><b>MKEC</b> ENGINEERING CONSULTANTS 411 N. WEBB ROAD WICHITA, KS. 67206 316-684-9600</p>	<b>WEBB ROAD TURN LANES</b>	
	PROJECT NAME	
	<b>STA 31+00 TO STA 35+96.61</b>	
	SHEET TITLE	
DFL	KKL	GJA
DESIGN BY:	DRAWN BY:	CHECKED BY:
SEPTEMBER 2003	02014_E4	9 / 34
DATE	JOB NO.	SHEET/OF

H:\DWG\02014\DWG\PAV\13THPAV\02014\_E4