

BENCHMARK:
 CROSS CUT ON NORTH
 END OF WEST HEADWALL
 137.5' SOUTH & 12' WEST
 OF THE INTERSECTION OF
 29TH ST N & 127TH ST E.
 ELEV. = 1382.45 NAVD88

Remove trees only as necessary
 for sanitary sewer construction
 and only with permission of
 Developer or Baughman Co.
 Cost of removal to be incidental
 to lump sum bid item "Site
 Clearing & Restoration".

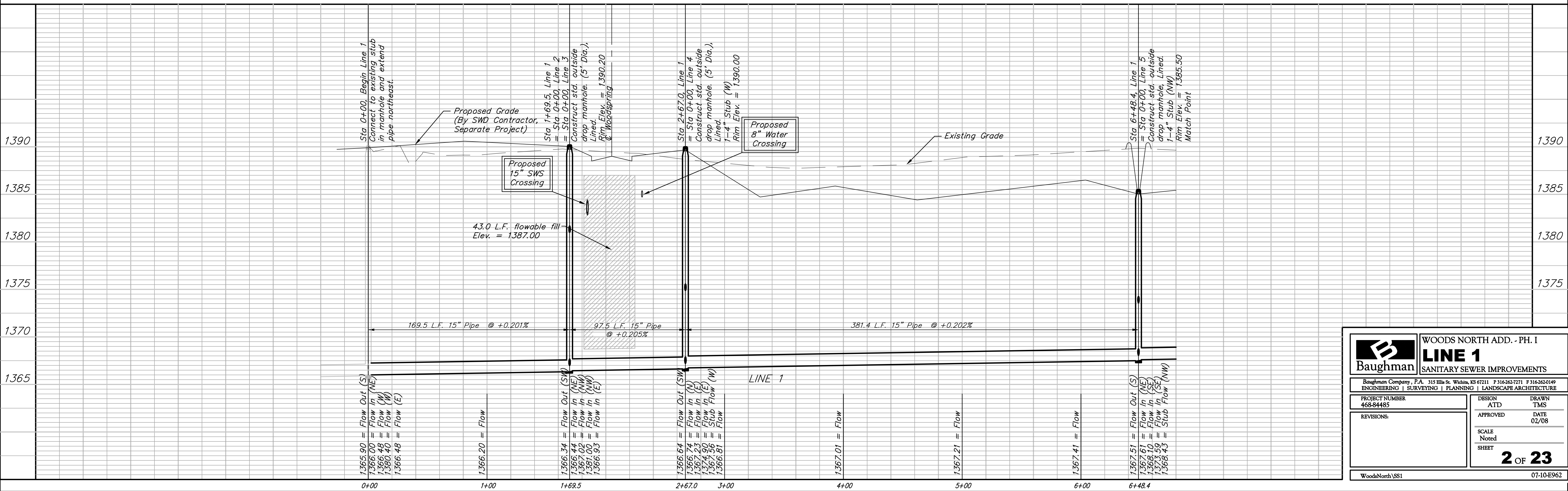
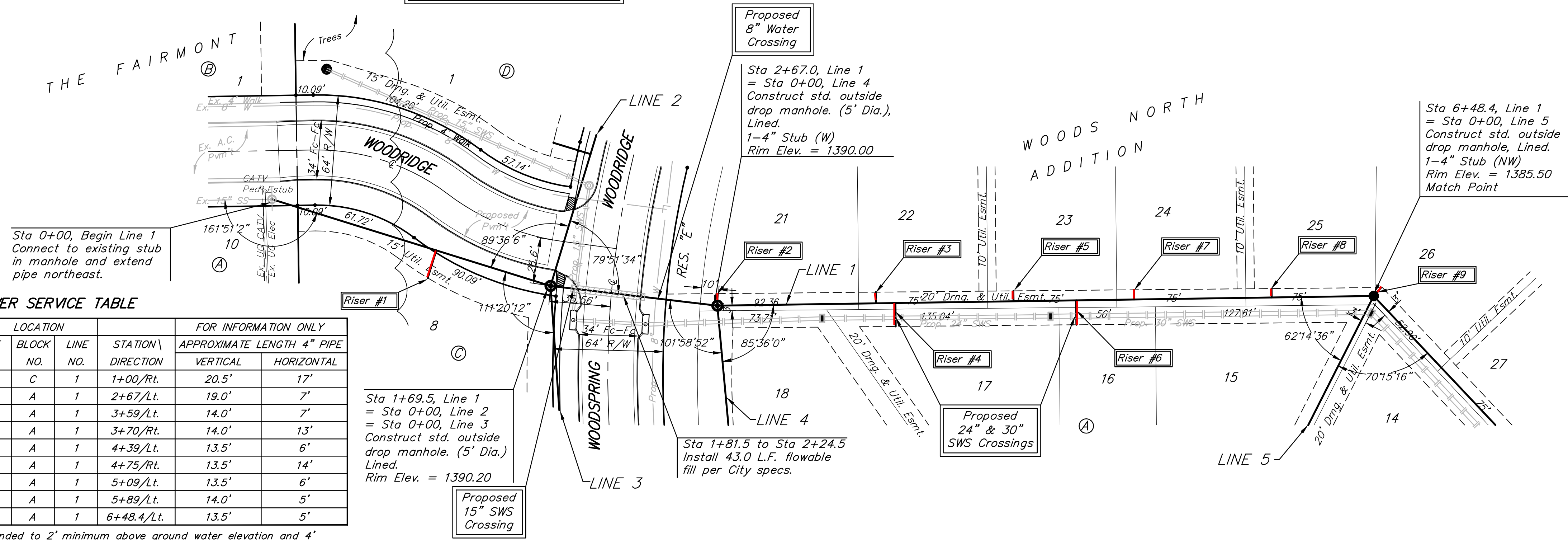
Scale: 1" = 40' Horizontal
 1" = 5' Vertical
 • = Iron

SEWER SERVICE TABLE

NUMBER	TYPE	LOCATION				FOR INFORMATION ONLY	
		LOT NO.	BLOCK NO.	LINE NO.	STATION / DIRECTION	APPROXIMATE LENGTH	4" PIPE VERTICAL / HORIZONTAL
1	15" X 4" Tee	8	C	1	1+00/Rt.	20.5'	17'
2	4" Stub	21	A	1	2+67/Lt.	19.0'	7'
3	15" X 4" Tee	22	A	1	3+59/Lt.	14.0'	7'
4	15" X 4" Tee	17	A	1	3+70/Rt.	14.0'	13'
5	15" X 4" Tee	23	A	1	4+39/Lt.	13.5'	6'
6	15" X 4" Tee	16	A	1	4+75/Rt.	13.5'	14'
7	15" X 4" Tee	24	A	1	5+09/Lt.	13.5'	6'
8	15" X 4" Tee	25	A	1	5+89/Lt.	14.0'	5'
9	4" Stub	26	A	1	6+48.4/Lt.	13.5'	5'

NOTE: Vertical Riser Pipe shall be extended to 2' minimum above ground water elevation and 4' maximum below proposed ground elevation.

RISER NO.	LINE NO.	DISTANCE FROM	
		UPSTREAM MH	DOWNSTREAM MH
1	1	69.5'	100'
2	1	0'	97.5'
3	1	289.5'	92'
4	1	278.5'	103'
5	1	209.5'	172'
6	1	173.5'	208'
7	1	139.5'	242'
8	1	59.5'	322'
9	1	0'	381.5'



Baughman **WOODS NORTH ADD. - PH. I**
LINE 1
 SANITARY SEWER IMPROVEMENTS

PROJECT NUMBER: 468-84485
 DESIGN: ATD
 DRAWN: TMS
 APPROVED: [Signature]
 DATE: 02/08

SCALE: Noted
 SHEET: **2 OF 23**

WOODS NORTH VSS1 07-10-E962