

BENCHMARK:
 CROSS CUT ON NORTH
 END OF WEST HEADWALL
 137.5' SOUTH & 12' WEST
 OF THE INTERSECTION OF
 29TH ST N & 127TH ST E.
 ELEV. = 1382.45 NAVD88

Sta 6+48.4, Line 1
 = Sta 0+00, Line 5
 Match Point

Sta 7+76.6, Line 1
 = Sta 0+00, Line 6
 Construct std. outside
 drop manhole, Lined.
 Rim Elev. = 1385.40

Sta 10+88.4, Line 1
 = Sta 0+00, Line 7
 Construct std. outside
 drop manhole, Lined.
 Rim Elev. = 1387.90

Sta 12+76.5, Line 1
 Construct std. manhole,
 Lined.
 Rim Elev. = 1389.00

Sta 9+35.5, Line 1
 Construct std. manhole,
 Lined.
 Rim Elev. = 1385.40

Sta 14+77.7, Line 1
 Construct std. outside
 drop manhole, Lined.
 1 - 15" Stub (N)
 Rim Elev. = 1385.40

Sta 15+35.2, Line 1
 Construct std. manhole.
 Rim Elev. = 1385.40

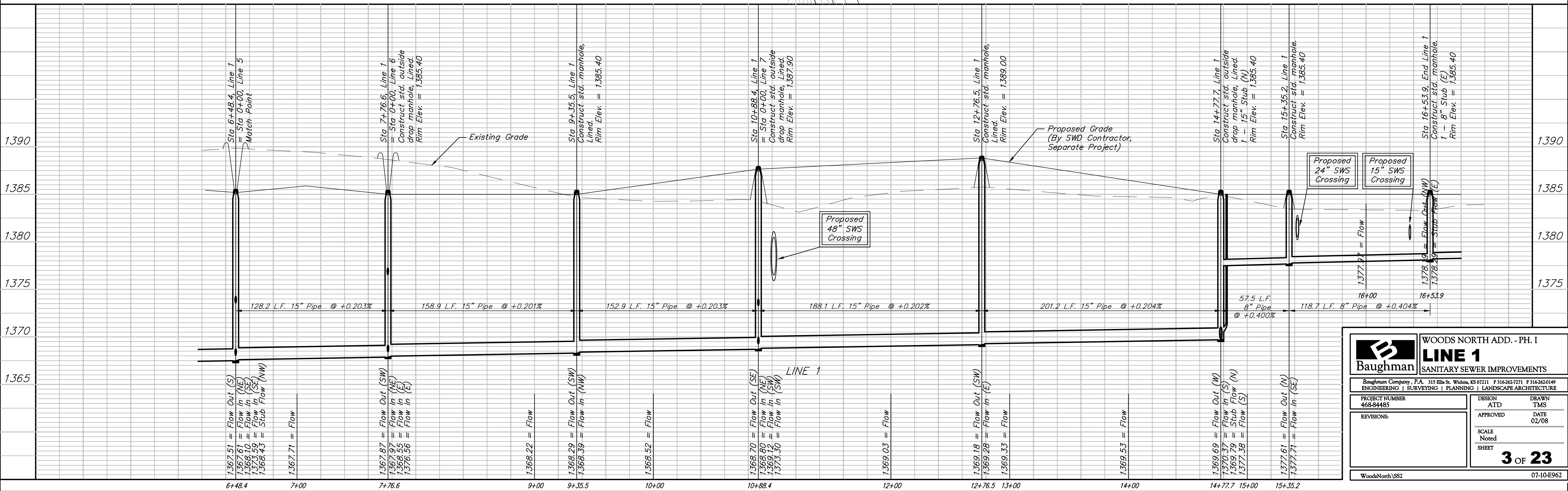
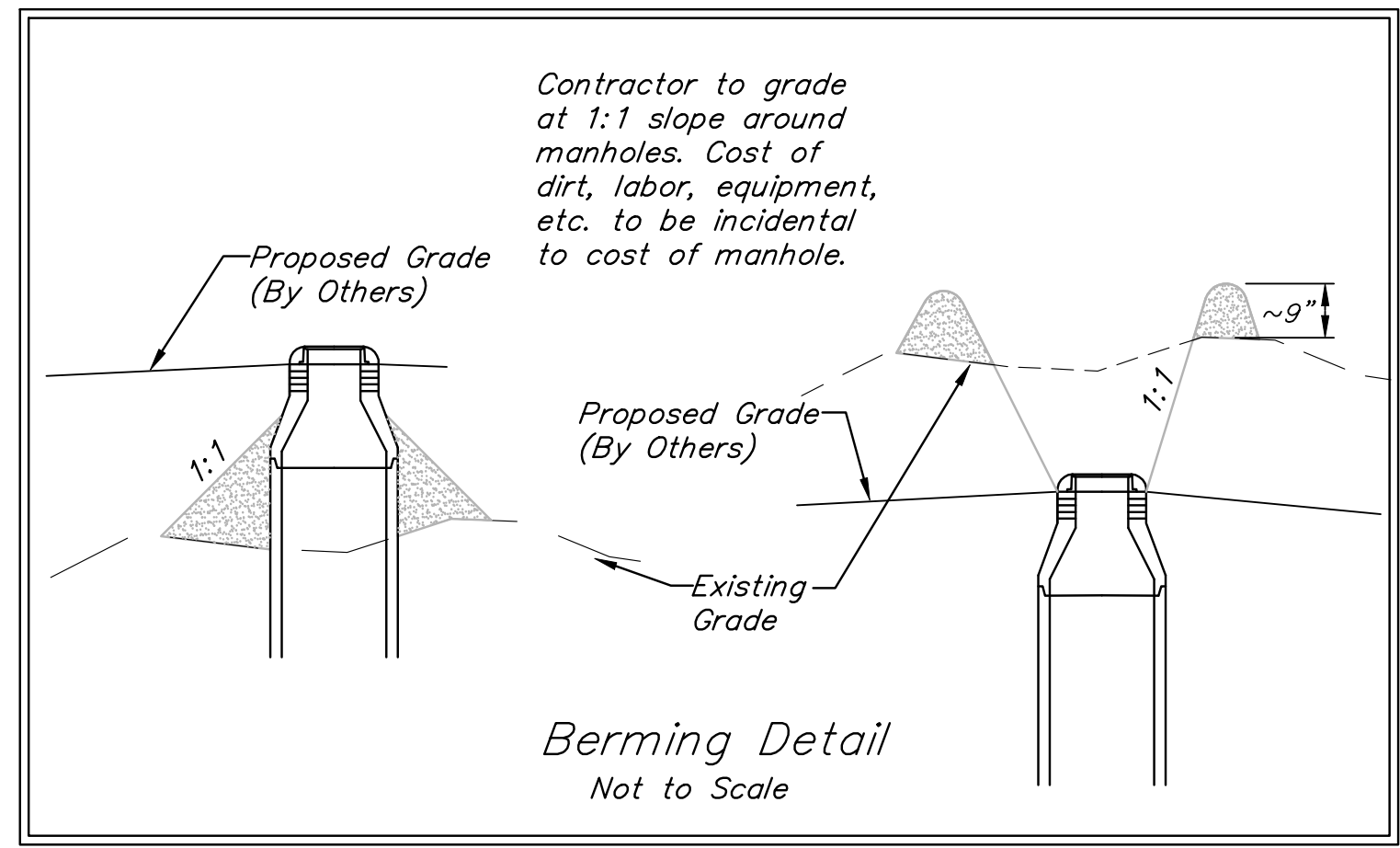
Sta 16+53.9, End Line 1
 Construct std. manhole.
 1 - 8" Stub (E)
 Rim Elev. = 1385.40

SEWER SERVICE TABLE

NUMBER	TYPE	LOCATION			STATION \ DIRECTION	FOR INFORMATION ONLY		DISTANCE FROM	
		LOT NO.	BLOCK NO.	LINE NO.		APPROXIMATE LENGTH 4" PIPE	VERTICAL	HORIZONTAL	UPSTREAM MH
10	15" X 4" Tee	27	A	1	7+20/Lt.	14.0'	7'	56.5'	71.5'
11	15" X 4" Tee	28	A	1	7+90/Lt.	14.0'	7'	145.5'	13.5'
12	15" X 4" Tee	29	A	1	8+65/Lt.	13.0'	7'	70.5'	88.5'
13	15" X 4" Tee	30	A	1	13+39/Lt.	14.5'	5'	138.5'	62.5'

NOTE: Vertical Riser Pipe shall be extended to 2' minimum above ground water elevation and 4' maximum below proposed ground elevation.

Scale: 1" = 40' Horizontal
 1" = 5' Vertical
 • = Iron



Baughman WOODS NORTH ADD. - PH. I
LINE 1
 SANITARY SEWER IMPROVEMENTS

Baughman Company, P.A. 315 Ellis St. Wichita, KS 67211 P 316-262-7271 F 316-262-0149
 ENGINEERING | SURVEYING | PLANNING | LANDSCAPE ARCHITECTURE

PROJECT NUMBER 468-84485	DESIGN ATD	DRAWN TMS
REVISIONS:	APPROVED	DATE 02/08
	SCALE Noted	SHEET 3 OF 23

WoodsNorthVSS2 07-10-E962