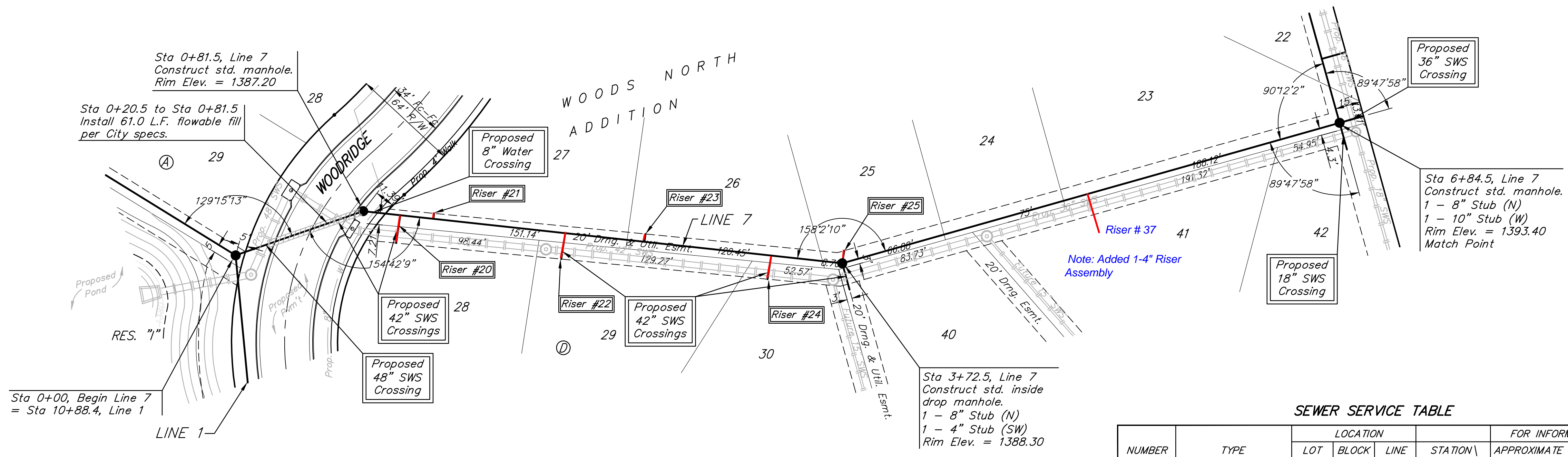


**BENCHMARK:**  
 CROSS CUT ON NORTH  
 END OF WEST HEADWALL  
 137.5' SOUTH & 12' WEST  
 OF THE INTERSECTION OF  
 29TH ST N & 127TH ST E.  
 ELEV. = 1382.45 NAVD88

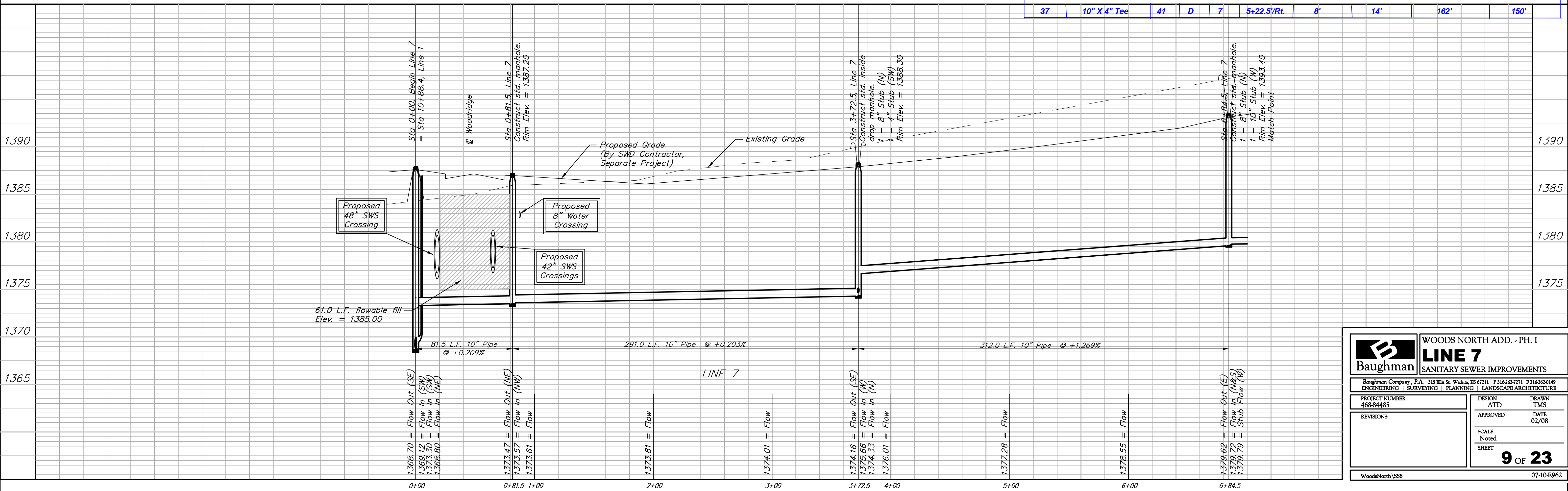
Scale: 1" = 40' Horizontal  
 1" = 5' Vertical  
 • = Iron



**SEWER SERVICE TABLE**

NUMBER	TYPE	LOCATION			FOR INFORMATION ONLY		DISTANCE FROM		
		LOT NO.	BLOCK NO.	LINE NO.	STATION DIRECTION	APPROXIMATE LENGTH 4" PIPE VERTICAL	HORIZONTAL	UPSTREAM MH	DOWNSTREAM MH
20	10" X 4" Tee	28	D	7	1+04/Rt.	10.0'	17'	168.5'	22.5'
21	10" X 4" Tee	27	D	7	1+24/Lt.	10.0'	3'	148.5'	42.5'
22	10" X 4" Tee	29	D	7	2+04/Rt.	8.5'	15'	168.5'	122.5'
23	10" X 4" Tee	26	D	7	2+52/Lt.	9.0'	5'	120.5'	170.5'
24	10" X 4" Tee	30	D	7	3+29/Rt.	9.5'	14'	43.5'	247.5'
25	4" Stub	25	D	7	3+72.5/Lt.	9.5'	8'	0'	291'
37	10" X 4" Tee	41	D	7	5+22.5/Rt.	8'	14'	162'	150'

NOTE: Vertical Riser Pipe shall be extended to 2' minimum above ground water elevation and 4' maximum below proposed ground elevation.



**Baughman** **WOODS NORTH ADD. - PH. I**  
**LINE 7**  
 SANITARY SEWER IMPROVEMENTS

Baughman Company, P.A. 315 Ellis St. Wichita, KS 67211 P 316-262-7271 F 316-262-0149  
 ENGINEERING | SURVEYING | PLANNING | LANDSCAPE ARCHITECTURE

PROJECT NUMBER 468-84485	DESIGN ATD	DRAWN TMS
REVISIONS:	APPROVED	DATE 02/08
	SCALE Noted	SHEET

**9 OF 23**

WoodsNorthVSS 07-10-E962